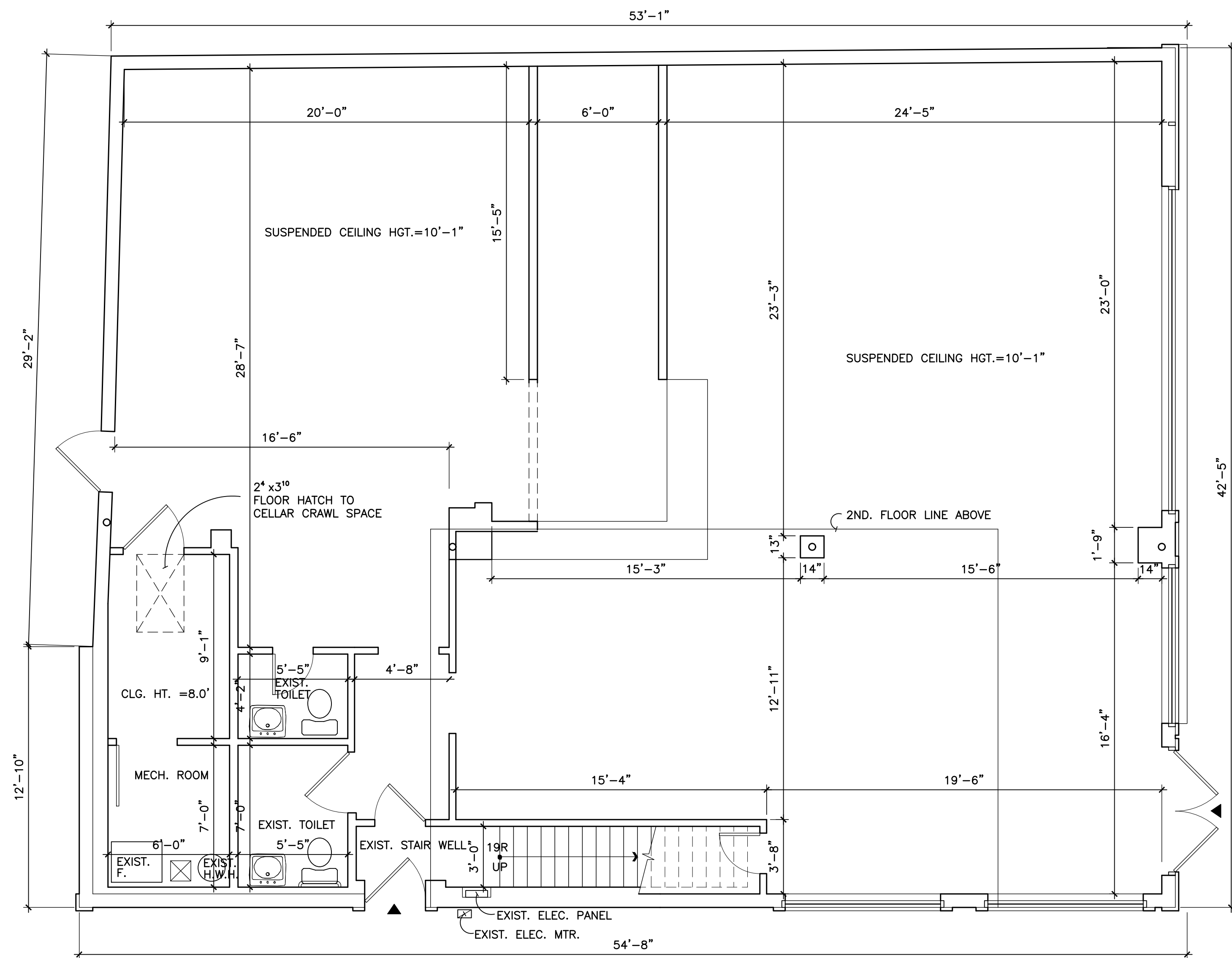


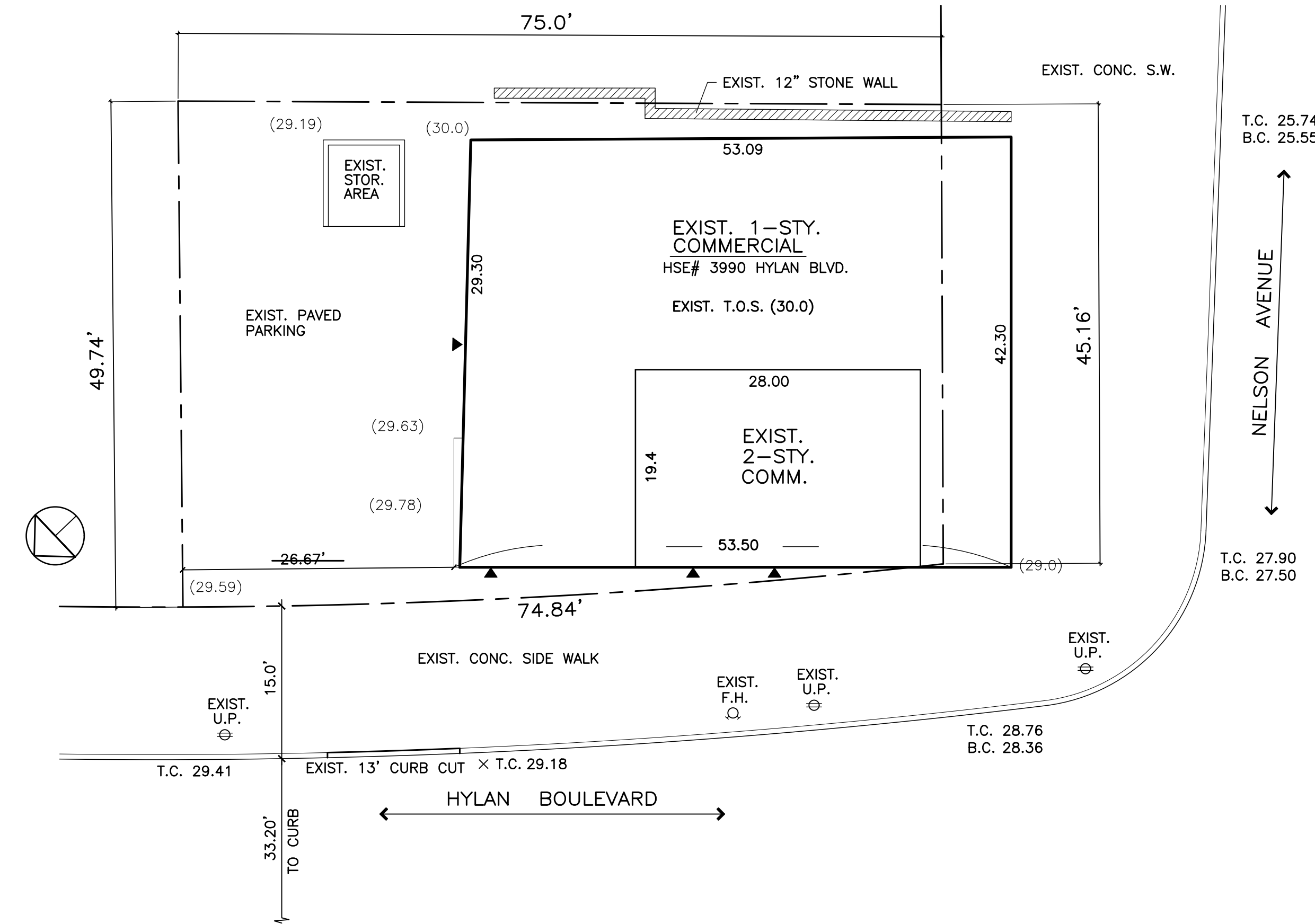
REFERENCE DATA :

BLOCK 5208  
 LOT 1  
 MAP 33c  
 DISTRICT C1-1 IN R3-1  
 3990 Hylan Blvd.  
 HOUSE# AKA 301 NELSON AVE.  
 OCCUPANCY GROUP COMMERCIAL (1938 CODE)  
 M/B (2008 CODE)  
 CONSTRUCTION CLASS CLASS 4 (1938 CODE)  
 IIB (1968 CODE)  
 USE GROUP 6  
 INSIDE FIRE DISTRICT  
 OUTSIDE FLOOD ZONE /2013 PFIRM  
 MAP# 3604970317G  
 SURVEY BY: ROGERS SURVEYING PLLC  
 SURVEY# 31811 10/31/07




FIRST FLOOR PLAN (EXIST. CONDITION)  
 SCALE: 1/4" = 1'-0"

DOUBLE-GLAZED, CLEAR TEMPERED GLASS IN  
 ALUM. FRAME STOREFRONT WINDOWS (TYP.)



SITE PLAN  
 SCALE: 1" = 10'

EXISTING CONDITION

TITLE	SITE & FIRST FLOOR PLANS	DATE	04/14/2022
LOCATION	3990 Hylan Boulevard STATEN ISLAND, N.Y.	REV.	
 WILLY C. YUIN ARCHITECT, P.L.L.C. 410 ST. MARKS PLACE STATEN ISLAND, N.Y. 10301	DWG. NO.	A-001.00	
	PAGE NO.	1 of 2	