

# FOR SALE

## Newport Mixed-Use Land XXXX Glen Road, Newport, MN 55055



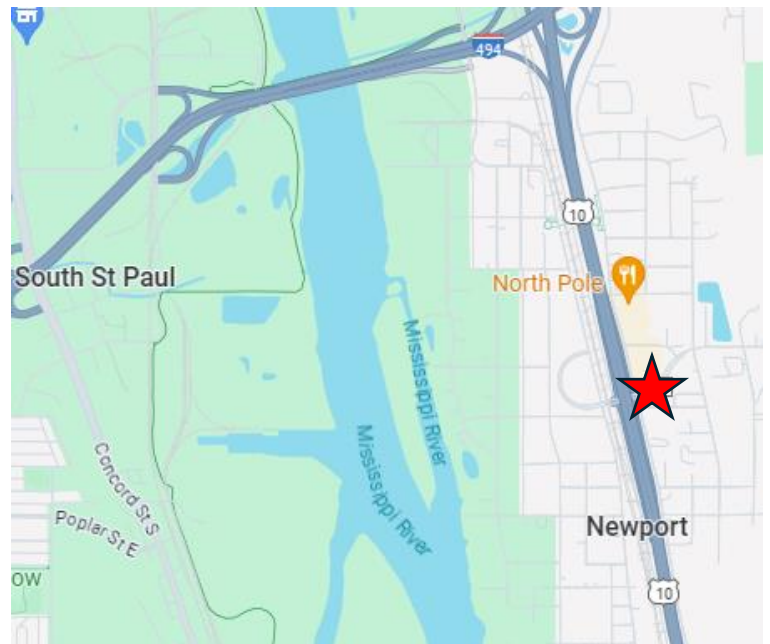
### LISTING DETAILS

- Land Size: 0.86 Acres
- PID: 36.028.22.21.0081
- Price: \$400,000
- Zoning: MX-1 (Mixed-Use)
- Uses: Retail, Office, Flex, Showroom, and Residential Support

### PROPERTY DETAILS

- Pad Ready
- Potential for +/- 5,000 SF Building
- Easy Access from Highway 61 & I-494

### LOCATION



**CROSSROADS**  
PROPERTIES

Mark Young

D: 651-233-2435 | M: 651-307-2371

Zac Houle

D: 651-209-0520 | M: 651-248-7567

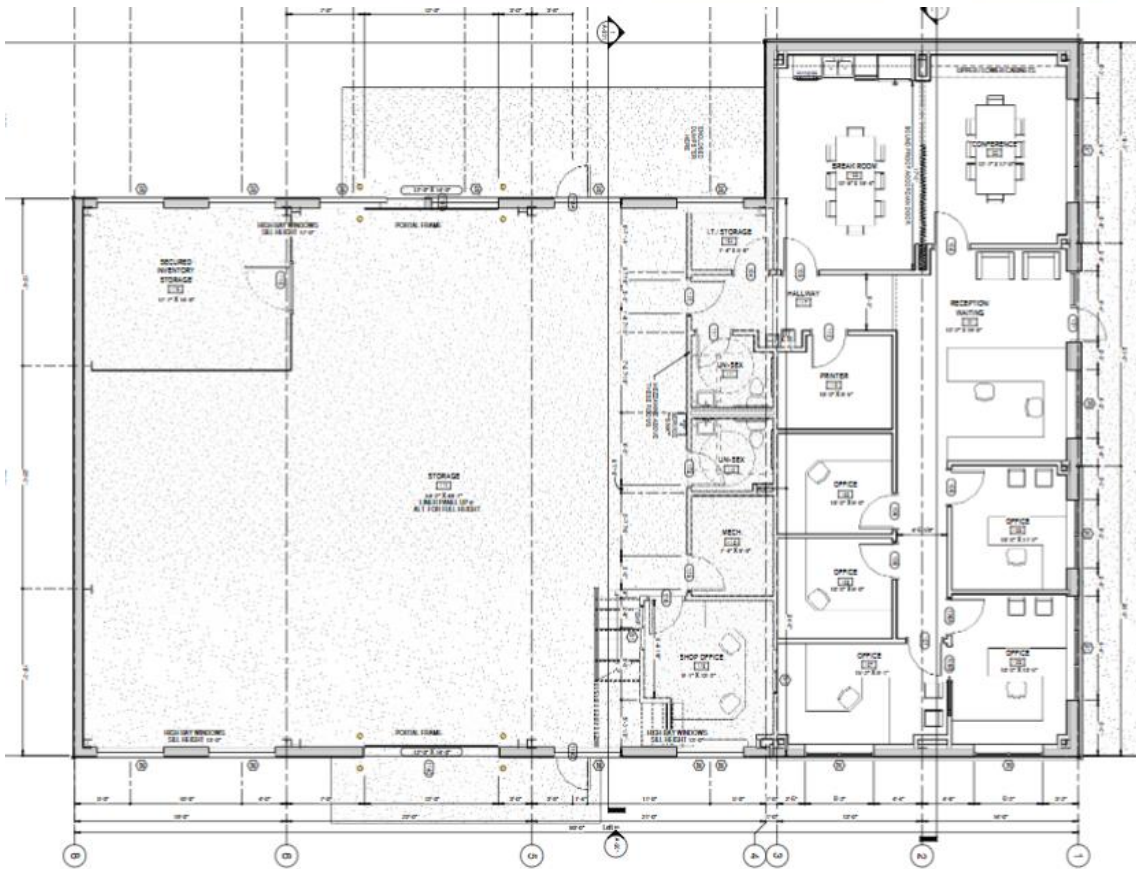
7250 Hudson Boulevard N, Suite 160, Oakdale, MN 55128

[www.crossroadsproperties.net](http://www.crossroadsproperties.net)

**FOR SALE**

**Newport Mixed-Use Land**  
**XXXX Glen Road, Newport, MN 55055**

**POTENTIAL BUILDING PLANS**



**CROSSROADS**  
PROPERTIES

Mark Young

D: 651-233-2435 | M: 651-307-2371

Zac Houle

D: 651-209-0520 | M: 651-248-7567

7250 Hudson Boulevard N, Suite 160, Oakdale, MN 55128

[www.crossroadsproperties.net](http://www.crossroadsproperties.net)

# FOR SALE

## Newport Mixed-Use Land XXXX Glen Road, Newport, MN 55055

### NEWPORT DEMOGRAPHICS

#### Location Facts & Demographics

Demographics are determined by a 10 minute drive from Glen Rd, Newport, MN 55055

CITY, STATE

**Newport, MN**

POPULATION

**160,928**

AVG. HH SIZE

**2.61**

MEDIAN HH INCOME

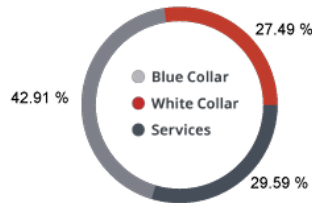
**\$72,129**

HOME OWNERSHIP

Renters: **16,318**

Owners: **45,162**

EMPLOYMENT



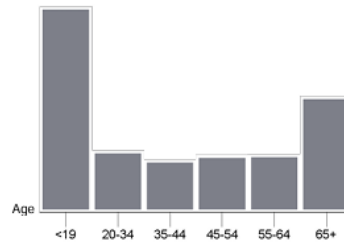
**52.17 %** Employed  
**1.75 %** Unemployed

EDUCATION

High School Grad: **28.20 %**  
 Some College: **25.81 %**  
 Associates: **8.72 %**  
 Bachelors: **30.86 %**

GENDER & AGE

**48.94 %** **51.06 %**

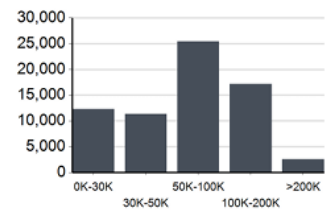


RACE & ETHNICITY

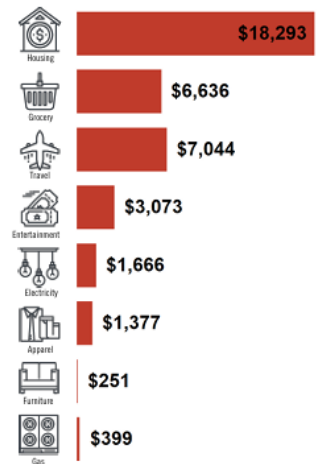
White: **79.51 %**  
 Asian: **3.97 %**  
 Native American: **0.07 %**  
 Pacific Islanders: **0.00 %**  
 African-American: **5.47 %**  
 Hispanic: **6.30 %**  
 Two or More Races: **4.67 %**



INCOME BY HOUSEHOLD



HH SPENDING



**CROSSROADS**  
PROPERTIES

Mark Young

D: 651-233-2435 | M: 651-307-2371

Zac Houle

D: 651-209-0520 | M: 651-248-7567

7250 Hudson Boulevard N, Suite 160, Oakdale, MN 55128

[www.crossroadsproperties.net](http://www.crossroadsproperties.net)