

[CLICK HERE FOR  
VIRTUAL TOUR](#)



Available Now!

# Kent 228th Logistics Center

7650 S 228th St | Kent, WA



# 7650 S 228th St, Kent, WA



## Property Highlights



**288,035 SF**

Total Building Area



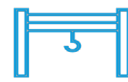
**8,731 SF**

Office Area



**30'**

Clear Height



**75** Dock High Doors

**2** Grade Level Doors

**6** Rail Doors



**137**

Trailer Positions

## Property Details

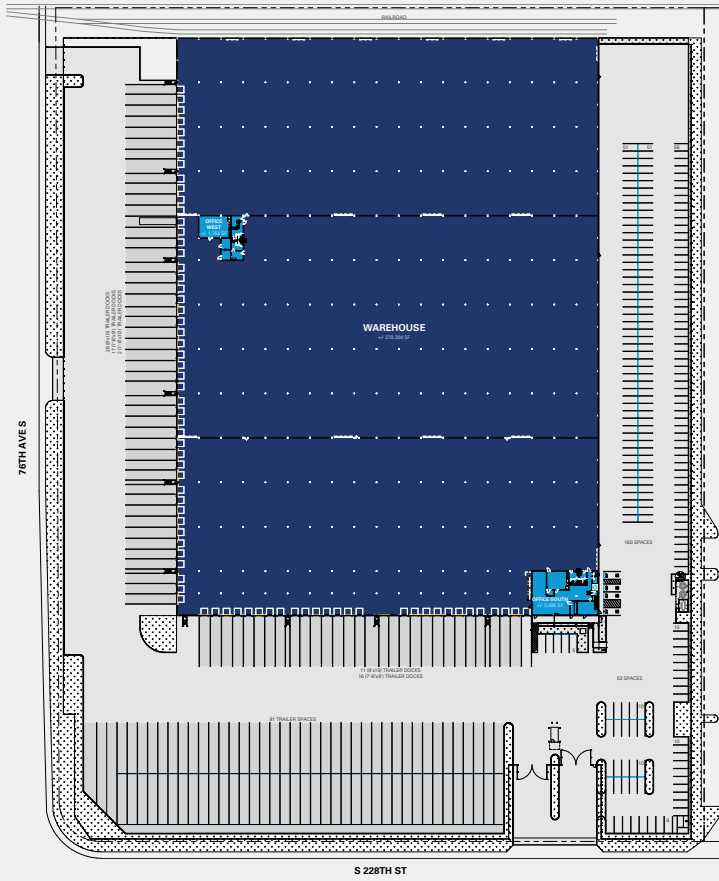
- + Cross loaded stand-alone building with excess land area
- + Security Shack
- + Parking - 146 free surface spaces
- + Easy access to SR-167 and I-5 via 228th St
- + Column spacing 48' x 24'
- + Pit levelers on every Dock High Door
- + Fenced, Lit, Secured
- + Rail Served
- + Tenant has vacated and capital improvements are underway
- + ESFR Sprinklers



[CLICK HERE FOR VIRTUAL TOUR](#)



# Site Plan

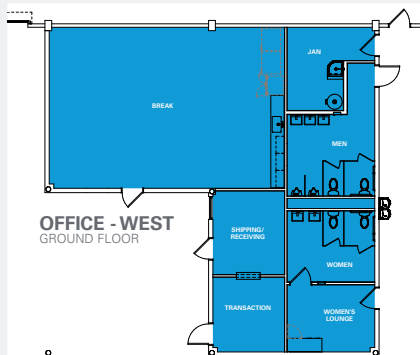


## Site Plan

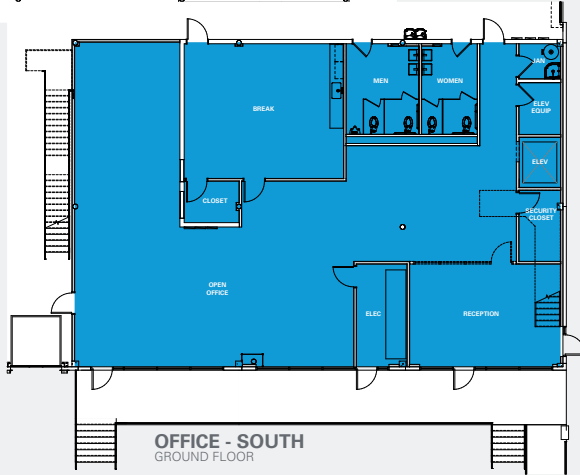
GROUND FLOOR

WAREHOUSE	+/- 279,304 SF
OFFICE SOUTH	+/- 3,485 SF
OFFICE WEST	+/- 1,754 SF
OFFICE MEZZANINE	+/- 3,492 SF
<b>TOTAL =</b>	<b>+/- 288,035 SF</b>

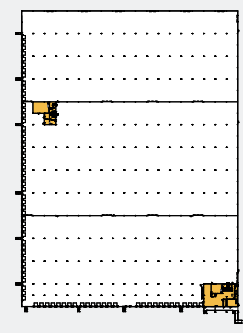
[CLICK HERE FOR VIRTUAL TOUR](#)



OFFICE - WEST  
GROUND FLOOR



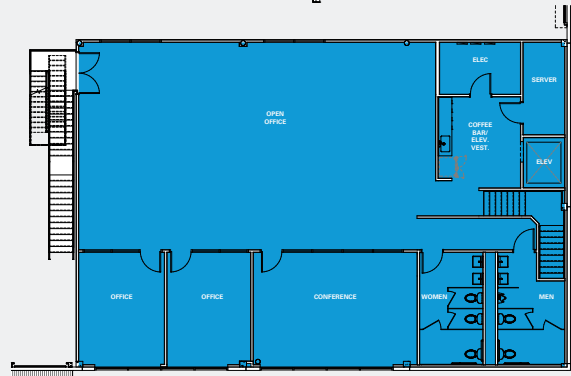
OFFICE - SOUTH  
GROUND FLOOR



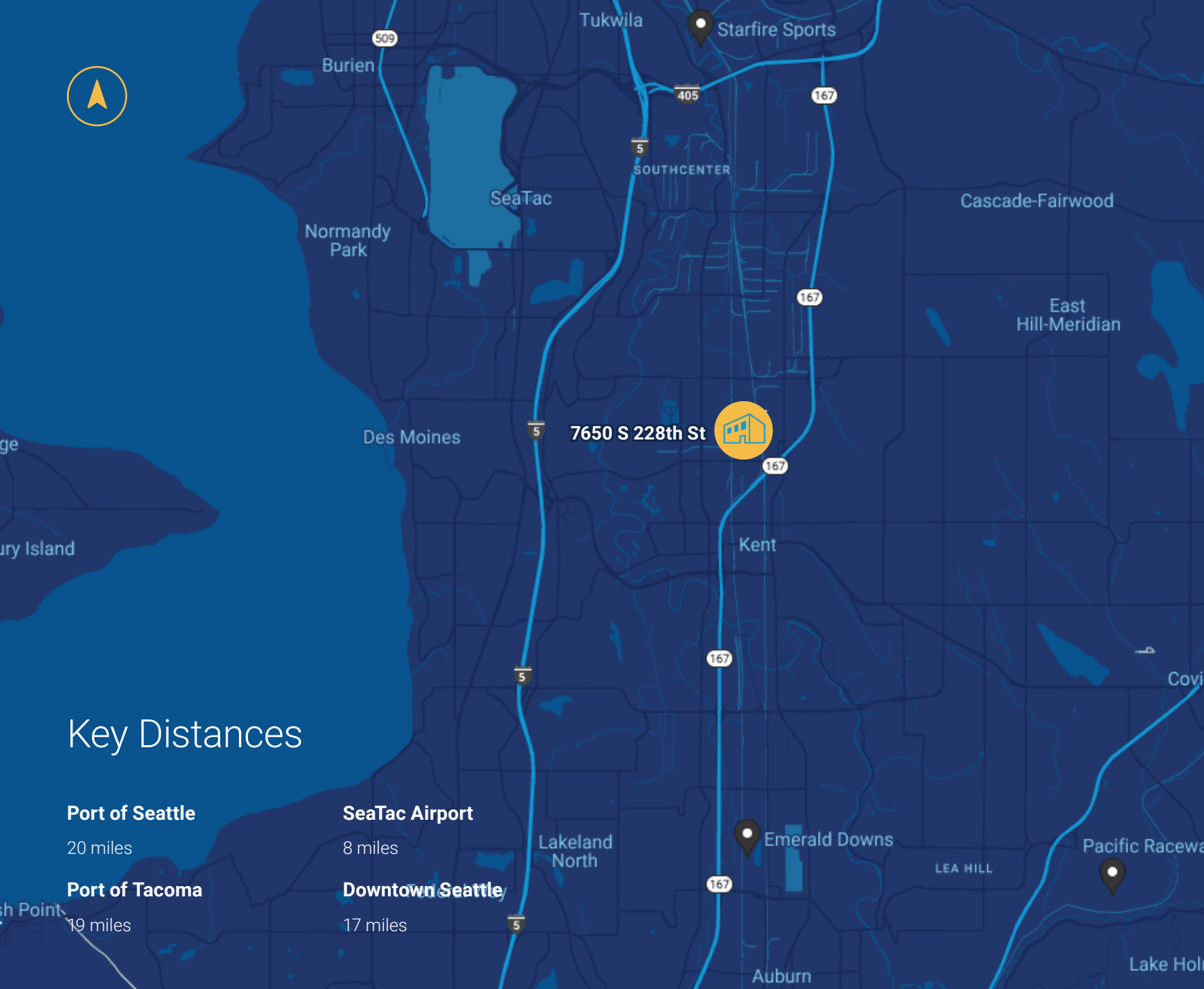
## Offices

OFFICES

OFFICE SOUTH	+/- 3,485 SF
OFFICE WEST	+/- 1,754 SF
OFFICE MEZZANINE	+/- 3,492 SF



OFFICE - SOUTH  
MEZZANINE



## Key Distances

### Port of Seattle

20 miles

### Port of Tacoma

19 miles

### SeaTac Airport

8 miles

### Downtown Seattle

17 miles

### About CenterPoint

CenterPoint is an industrial real estate company made up of dedicated thinkers, innovators and leaders with the creativity and know-how to tackle the industry's toughest challenges. And it's those kinds of problems—the delicate, the complex, the seemingly-impossible—that we relish most. Because with an agile team, substantial access to capital and industry-leading expertise, those are exactly the kinds of problems we're built to solve. For more information on CenterPoint Properties, visit [centerpoint.com](http://centerpoint.com), follow [@centerpointprop](https://twitter.com/centerpointprop) on Twitter or engage with us on [LinkedIn](https://www.linkedin.com/company/centerpoint).

### [centerpoint.com](http://centerpoint.com)

All information is subject to verification and no liability for errors or omissions is assumed.

Owned and Developed By



Bob Andrews  
213.488.8689  
[bandrews@centerpoint.com](mailto:bandrews@centerpoint.com)

Exclusive Marketing Agent



Thad Mallory, SIOR  
425.362.1410  
[thad.mallory@nrmk.com](mailto:thad.mallory@nrmk.com)

Taylor Hoff, SIOR  
425.362.1388  
[taylor.hoff@nrmk.com](mailto:taylor.hoff@nrmk.com)

Cam Warren  
425.362.1395  
[cam.warren@nrmk.com](mailto:cam.warren@nrmk.com)