

# 3123 MOON STATION ROAD SUITE 300

KENNESAW, GA 30144

**For Lease**  
7,200± SF Office / Warehouse Space

**ROBERT GRAHAM**

*Vice President*  
404.942.2051  
rgraham@kingindustrial.com

**BRANDON HUFT**

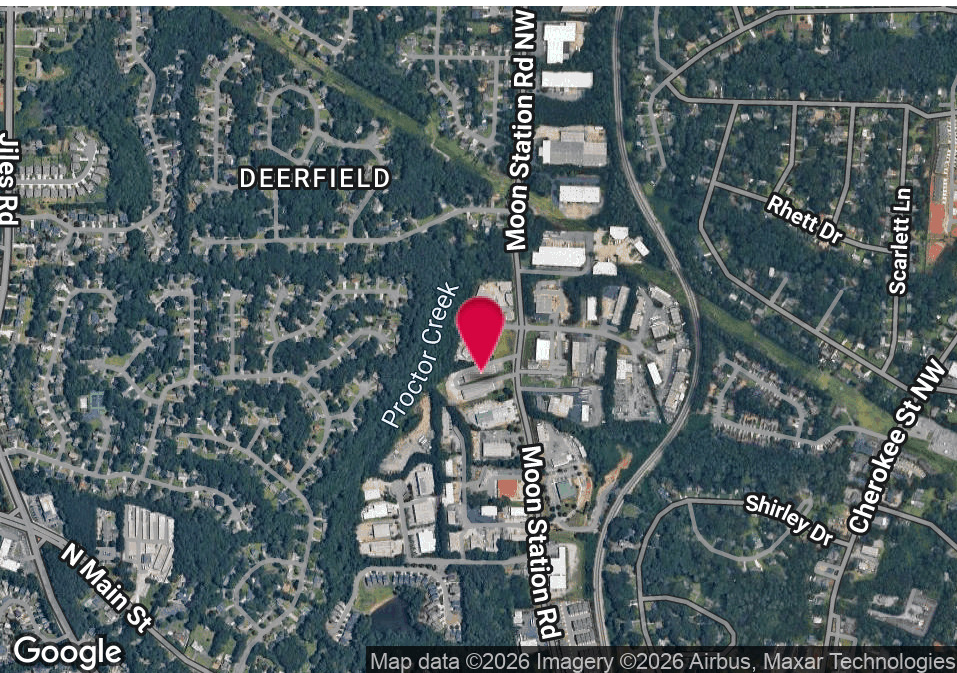
*Vice President*  
404.942.2009  
bhuft@kingindustrial.com

**King** Industrial  
Realty, Inc.

Industrial • Commercial • Investment  
404.942.2000 | [kingindustrial.com](http://kingindustrial.com)



**FOR LEASE**  
**7,200± SF**



## PROPERTY HIGHLIGHTS

- 400± SF Office Space
- 18' - 20' Clear Height
- Clear Span Warehouse
- (1) 10' x 10' Dock-High with Leveler
- (1) 10' x 10' Drive-In Door
- Small Paved Outside Storage Area
- Zoned LI

### ROBERT GRAHAM

Vice President

404.942.2051

[rgraham@kingindustrial.com](mailto:rgraham@kingindustrial.com)

### BRANDON HUFT

Vice President

404.942.2009

[bhuft@kingindustrial.com](mailto:bhuft@kingindustrial.com)

*Every effort has been made to provide accurate information, but no liability is assumed for errors or omissions.*



Industrial • Commercial • Investment  
404.942.2000 | [kingindustrial.com](http://kingindustrial.com)



**ROBERT GRAHAM**

Vice President

404.942.2051

[rgraham@kingindustrial.com](mailto:rgraham@kingindustrial.com)

**BRANDON HUFT**

Vice President

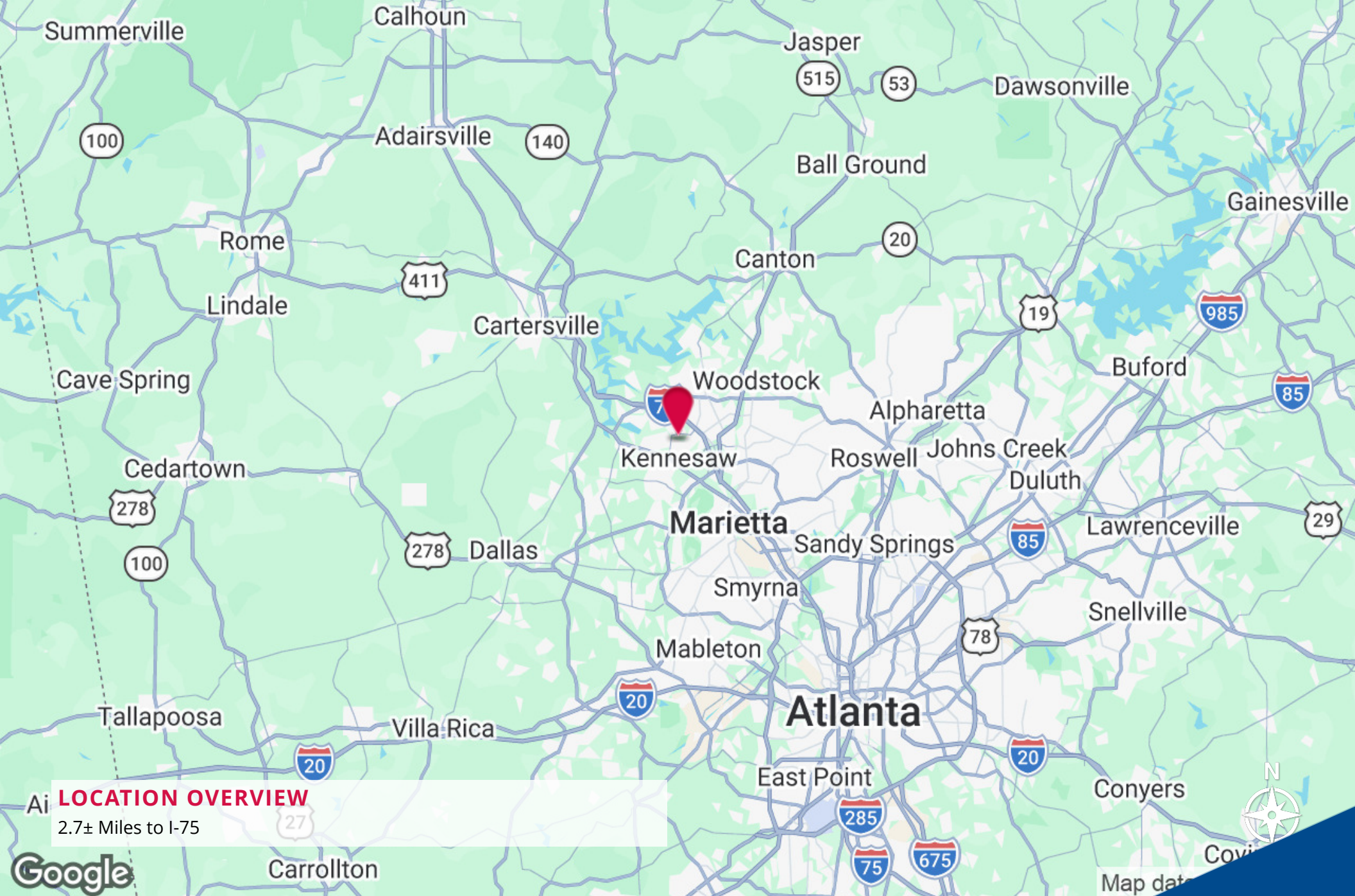
404.942.2009

[bhuft@kingindustrial.com](mailto:bhuft@kingindustrial.com)

*Every effort has been made to provide accurate information, but no liability is assumed for errors or omissions.*

**King** Industrial  
Realty, Inc. **CORFAC**  
INTERNATIONAL

Industrial • Commercial • Investment  
404.942.2000 | [kingindustrial.com](http://kingindustrial.com)



**AI LOCATION OVERVIEW**

2.7± Miles to I-75

**ROBERT GRAHAM**

Vice President

404.942.2051

[rgraham@kingindustrial.com](mailto:rgraham@kingindustrial.com)

**BRANDON HUFT**

Vice President

404.942.2009

[bhuft@kingindustrial.com](mailto:bhuft@kingindustrial.com)



Industrial • Commercial • Investment  
404.942.2000 | [kingindustrial.com](http://kingindustrial.com)

Every effort has been made to provide accurate information, but no liability is assumed for errors or omissions.

EXCLUSIVELY LISTED BY:

**ROBERT GRAHAM**

*Vice President*

[rgraham@kingindustrial.com](mailto:rgraham@kingindustrial.com)

404.942.2051

**BRANDON HUFT**

*Vice President*

[bhuft@kingindustrial.com](mailto:bhuft@kingindustrial.com)

404.942.2009

***King*** Industrial  
Realty, Inc.

Industrial • Commercial • Investment  
404.942.2000 | [kingindustrial.com](http://kingindustrial.com)