

PARK PLAZA WEST

10700 SW Beaverton Hillsdale Highway | Beaverton, OR 97005

FOR LEASE

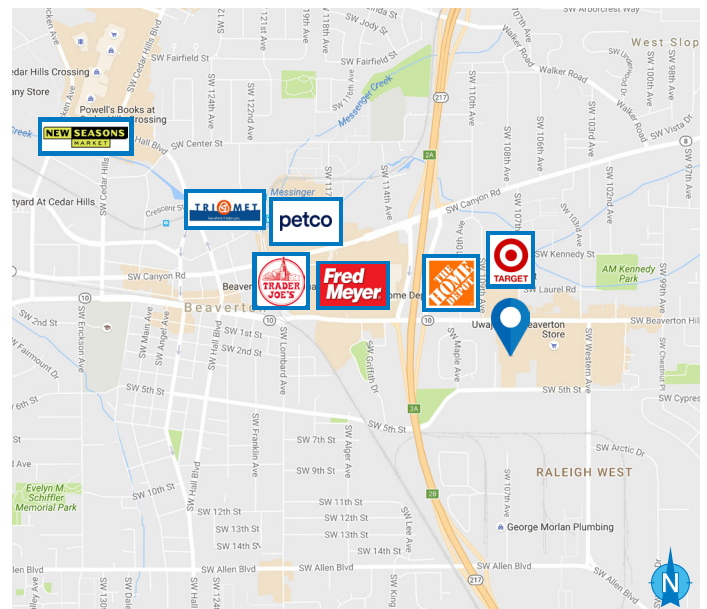


OFFICE SUITES AVAILABLE DETAILS

- Lease Rates: \$18.50 PSF, Full Service
- Rentable Area: ± 1,668 – ± 2,583 SF
- Suite 115 – 2,583 SF: 2nd Generation Dental suite

FEATURES

- Conference rooms
- Kitchen / break areas
- On-Site health center with showers
- Ample on-site parking
- Along Hwy 10 with easy access to Hwys 217 and 10
- Close to TriMet MAX and bus lines
- Neighboring retailers include Target, Home Depot, and Beaverton Town Center with Fred Meyer



04.23.2026

For more information or a property tour, please contact:

DUANE LINK

503.225.8465

Duanel@norris-stevens.com

DOUG CARTER

503.225.8499

DougC@norris-stevens.com

Norris & Stevens

INVESTMENT REAL ESTATE SERVICES

900 SW 5th Avenue • 17th Floor • Portland, OR 97204
503.223.3171 • norris-stevens.com



Information contained herein has been obtained from others and considered to be reliable; however, a prospective purchaser or lessee is expected to verify all information to their own satisfaction.

PARK PLAZA WEST

10700 SW Beaverton Hillsdale Highway | Beaverton, OR 97005

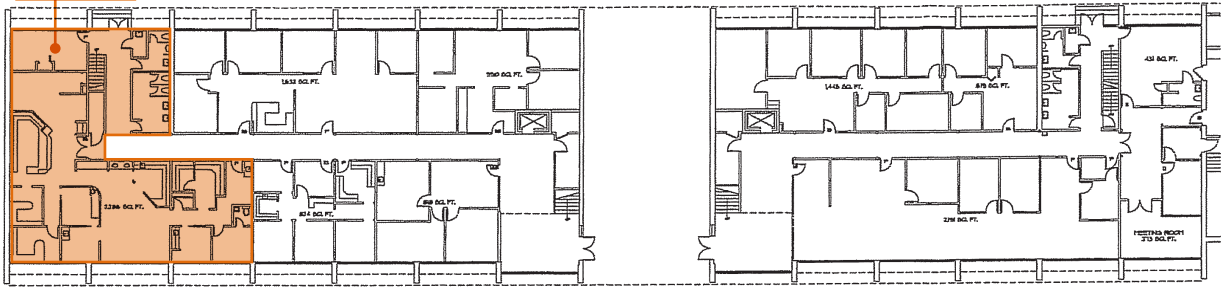
FOR LEASE

PHOTOS / PLANS

BUILDING 1

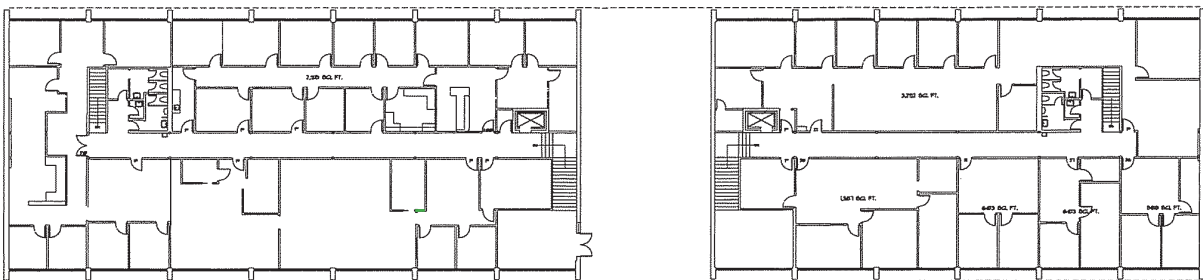


SUITE 115
± 2,583 SF



PARK PLAZA WEST - BUILDING #1 - GROUND FLOOR PLAN
1" = 20'-0"

OBA * 0223
1-15-02



PARK PLAZA WEST - BUILDING #1 - SECOND FLOOR PLAN
1" = 20'-0"

OBA * 0223
1-15-02

For more information or a property tour, please contact:

DUANE LINK
503.225.8465
Duanel@norris-stevens.com

DOUG CARTER
503.225.8499
DougC@norris-stevens.com

Norris & Stevens

INVESTMENT REAL ESTATE SERVICES



Information contained herein has been obtained from others and considered to be reliable; however, a prospective purchaser or lessee is expected to verify all information to their own satisfaction.

900 SW 5th Avenue • 17th Floor • Portland, OR 97204
503.223.3171 • norris-stevens.com

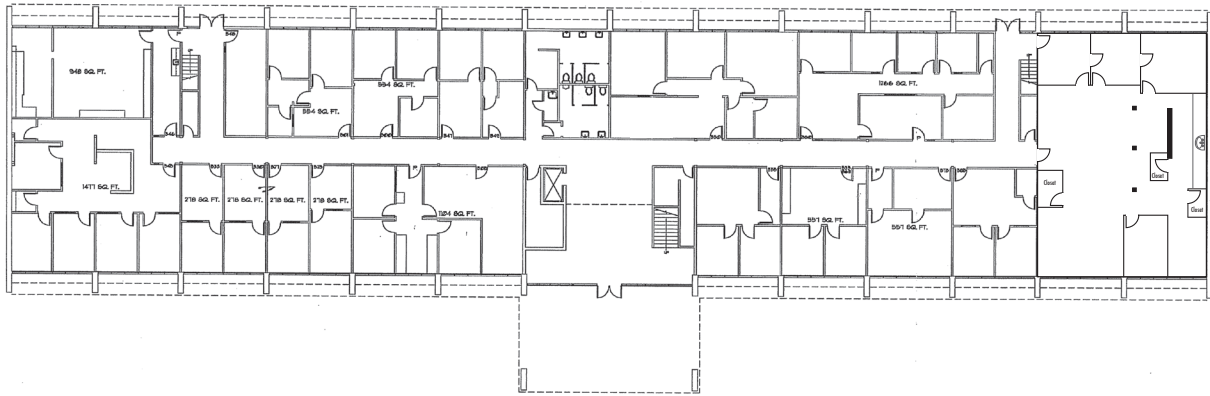
PARK PLAZA WEST

10700 SW Beaverton Hillsdale Highway | Beaverton, OR 97005

FOR LEASE

PHOTOS / PLANS

BUILDING 2



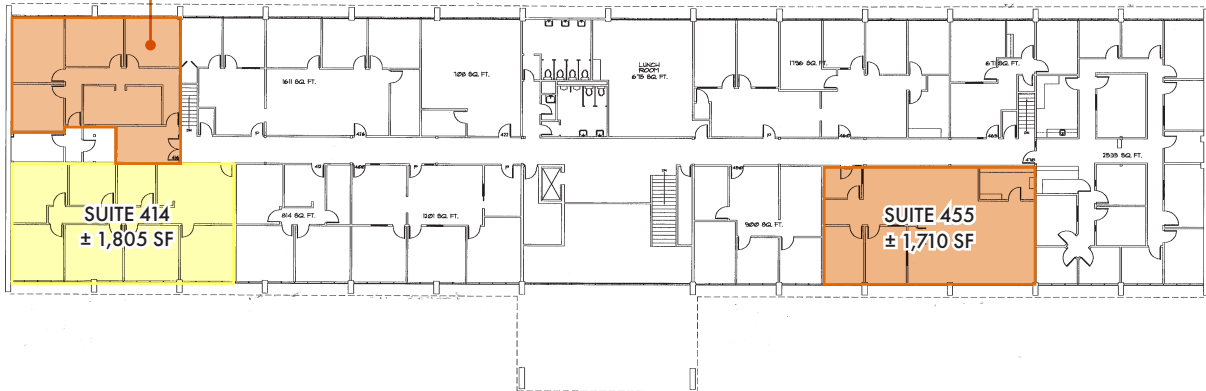
PARK PLAZA WEST - BUILDING #2- GROUND FLOOR PLAN



1" = 20'-0"

OBA # 0223
1-15-02

SUITE 422
± 1,668 SF



PARK PLAZA WEST - BUILDING #2 - SECOND FLOOR PLAN



1" = 20'-0"

OBA # 0223
1-15-02

For more information or a property tour, please contact:

DUANE LINK
503.225.8465
Duanel@norris-stevens.com

DOUG CARTER
503.225.8499
DougC@norris-stevens.com

Norris & Stevens

INVESTMENT REAL ESTATE SERVICES



Information contained herein has been obtained from others and considered to be reliable; however, a prospective purchaser or lessee is expected to verify all information to their own satisfaction.

900 SW 5th Avenue • 17th Floor • Portland, OR 97204
503.223.3171 • norris-stevens.com

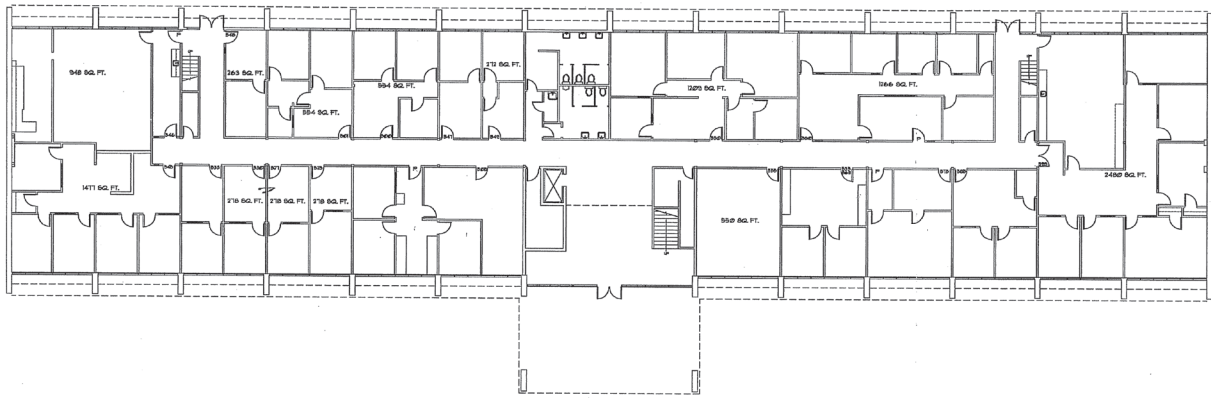
PARK PLAZA WEST

10700 SW Beaverton Hillsdale Highway | Beaverton, OR 97005

FOR LEASE

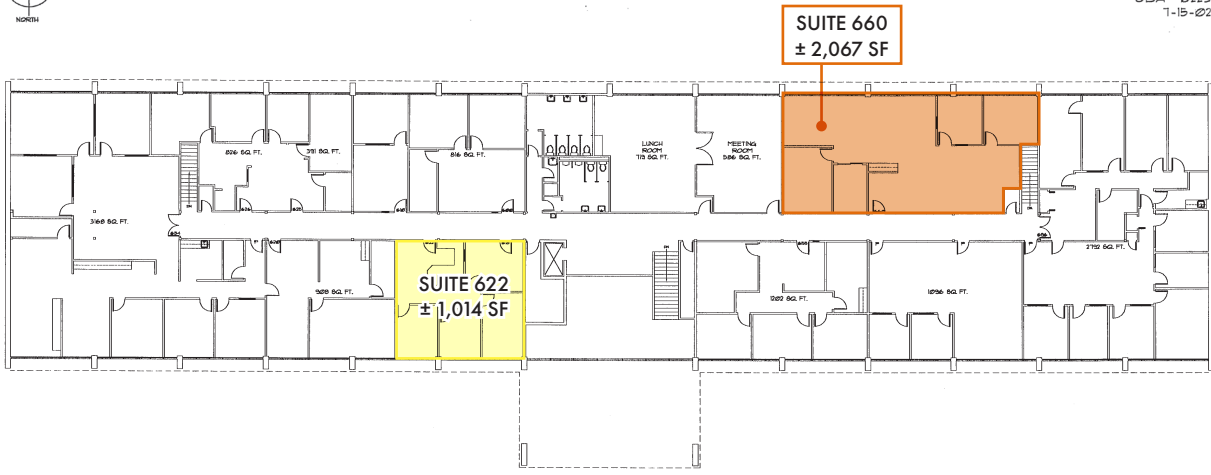
PHOTOS / PLANS

BUILDING 3



PARK PLAZA WEST - BUILDING #3- GROUND FLOOR PLAN
1" = 20'-0"

OBA # 0223
1-15-02



PARK PLAZA WEST - BUILDING #3- SECOND FLOOR PLAN
1" = 20'-0"

OBA # 0223
1-15-02

For more information or a property tour, please contact:

DUANE LINK
503.225.8465
Duanel@norris-stevens.com

DOUG CARTER
503.225.8499
DougC@norris-stevens.com

Norris & Stevens

INVESTMENT REAL ESTATE SERVICES



Information contained herein has been obtained from others and considered to be reliable; however, a prospective purchaser or lessee is expected to verify all information to their own satisfaction.

900 SW 5th Avenue • 17th Floor • Portland, OR 97204
503.223.3171 • norris-stevens.com