



2501 Martin Luther King Jr. Pkwy.
Des Moines, Iowa 50310

For lease

Industrial space
available in prime Des
Moines location

6,916 SF

Property overview

Availability: 6,916 SF

Lease rate: \$8.00 NNN

Lot size: 1.978 acres

Zoning: MX3 (Mixed-Use Flood District)

Year built: 1996

- Drive-in doors: 2
- Dock doors: 1
- Clear height: 14' - 18'
- Located in the heart of Des Moines, providing seamless connectivity to I-35 & I-235
- Situated near industrial and logistics operations

Contact brokers for
additional information

jll.com/des-moines

Tanner Hedstrom

Vice President

tanner.hedstrom@jll.com

+1 515 745 2734

Thomas Edwards

Associate

thomas.edwards@jll.com

+1 515 802 4684

Austin Hedstrom, SIOR

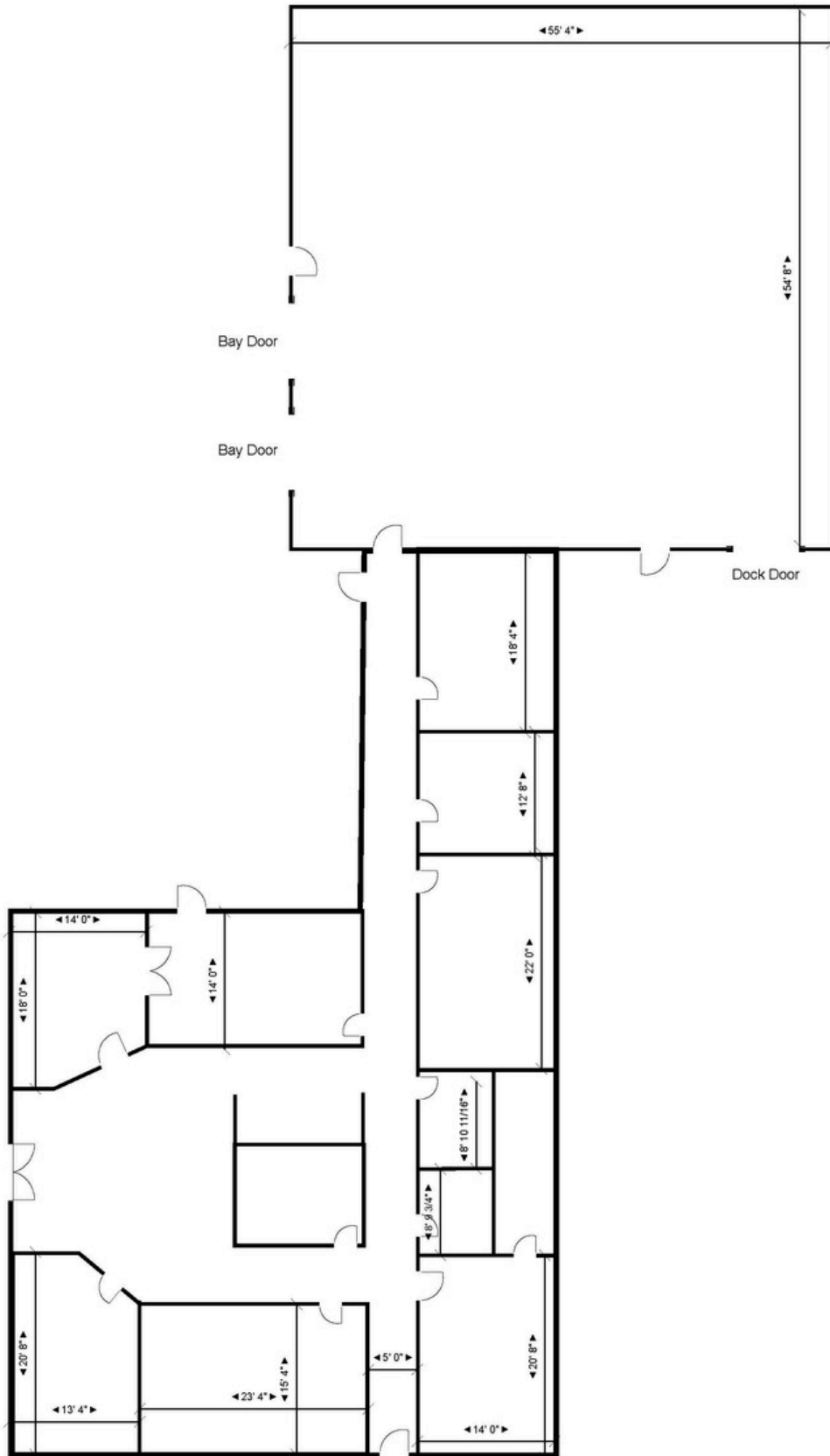
Executive Vice President

austin.hedstrom@jll.com

+1 515 414 1767



Floorplan





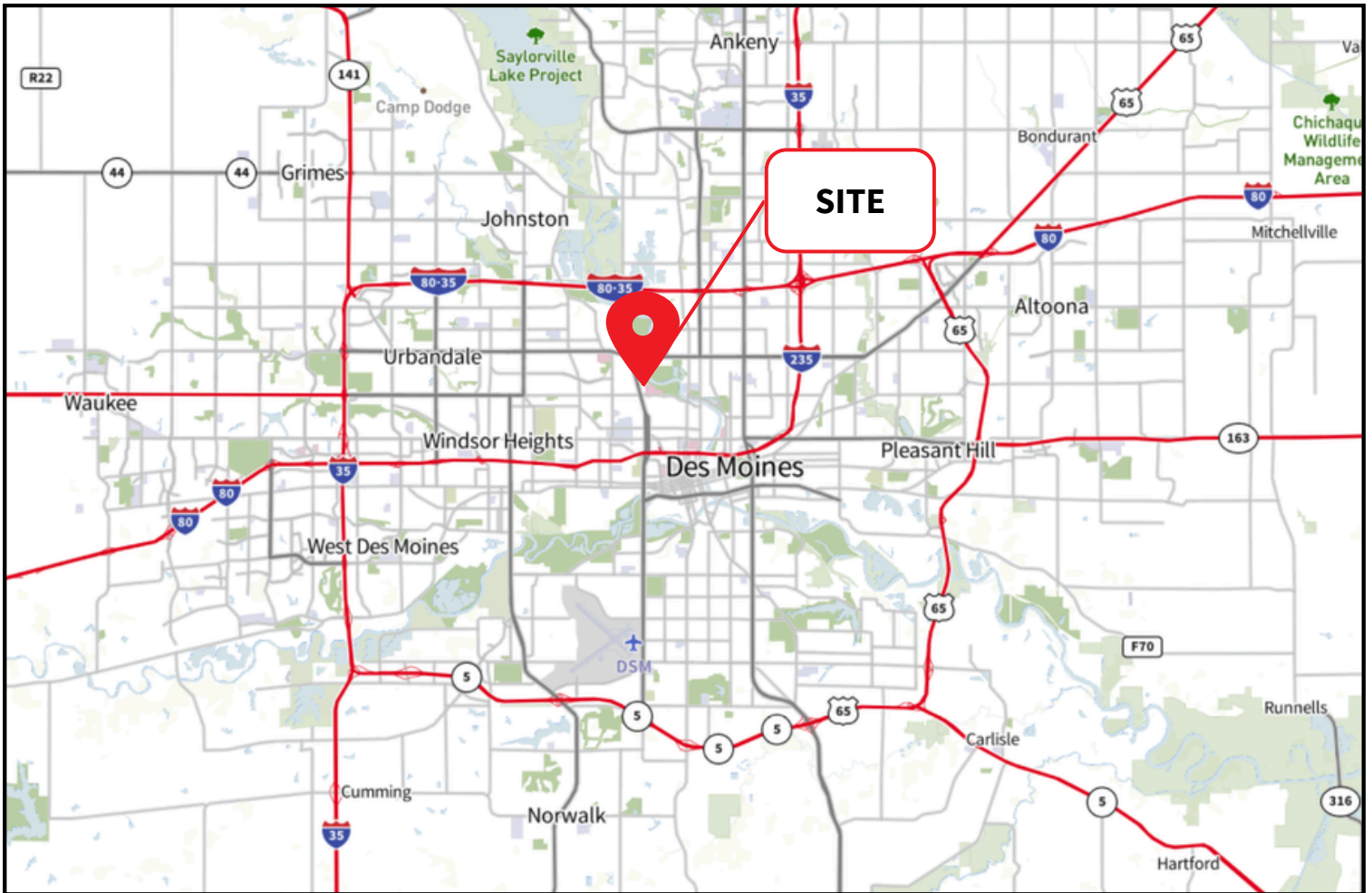
Images





For lease

2501 Martin Luther King Jr. Pkwy. | Des Moines, Iowa 50310



Contact brokers for
additional information
jll.com/des-moines

Tanner Hedstrom
Vice President
tanner.hedstrom@jll.com
+1 515 745 2734

Thomas Edwards
Associate
thomas.edwards@jll.com
+1 515 802 4684

Austin Hedstrom, SIOR
Executive Vice President
austin.hedstrom@jll.com
+1 515 414 1767