

DO NOT SCALE DRAWINGS  
CONTRACTOR TO VERIFY  
EXISTING CONDITIONS AND  
DIMENSIONS—NOTIFY ARCHITECT  
ANY DISCREPANCIES PRIOR  
BEGINNING CONSTRUCTION

Architect  
Record



NO | REVISION

06-26-15  
PLANNING PLAN CHECK COMMENTS

07-14-15  
ENV. HEALTH / BUILDING CORRECTIONS  
AND CLIENT REVISIONS

FOR CONSTRUCTION 07-31-16

PROJECT NUMBER  
**2015-060**

---

SHEET NAME  
**FURNISHING  
PLAN**

**HEET NUMBER**  
**A112**

TE OF THIS PRINTING -

1. ALL ISLES ARE 36" WIDE CLEAR MINIMUM (UNLESS OTHERWISE NOTED) ON PLANS.
2. REFER TO MILLWORK SHOP DRAWINGS FOR ALL CABINET/COUNTERTOP DRAWINGS AND TABLES/SEATING FOR SPECIFICATIONS.
3. ANY ITEM NOT LISTED IN FURNISHINGS LEGEND IS TO BE PROVIDED AND INSTALLED BY GENERAL CONTRACTOR, TYP. GENERAL CONTRACTOR RESPONSIBLE FOR RECEIVING, UNLOADING & STORING OWNER PROVIDED ITEMS.
4. ALL FIXTURES SHALL BE PROVIDED BY MILLWORK/SEATING VENDOR. UNLESS OTHERWISE NOTED.
5. THE KITCHEN STAFF SHALL HAVE ACCESS TO ONE, 408 AND, ONE TYPE "K" RATED FIRE EXTINGUISHER WITHIN 30' FEET OF TRAVEL TO BE FIELD VERIFIED AT TIME OF INSPECTION.
6. KITCHEN EQUIPMENT CONTRACTOR TO PROVIDE AND INSTALL EQUIPMENT. REFER TO EQUIPMENT PLAN.

2- PROVIDE A PORTABLE FIRE EXTINGUISHER WITH A RATING OF NOT LESS THAN 2-A OR 2-ABCW WITHIN 75 FEET TRAVEL DISTANCE TO ALL PORTIONS OF THE BUILDING ON EACH FLOOR, ALSO DURING CONSTRUCTION.

3- PROVIDE FIRE EXTINGUISHERS AS REQUIRED BY FIRE DEPARTMENT HEAD INSPECTOR (VERIFY PRIOR TO INSTALLATION).

3. FE-1: DINING AREA FIRE EXTINGUISHERS: PROVIDE EQUAL TO J.L. INDUSTRIES "COSMIC A" SERIES MODEL 10E, WALL MOUNTED 10LB. CAPACITY WITH NOZZLE. (OR EQUAL)

4. FE-2: KITCHEN AREA FIRE EXTINGUISHERS: PROVIDE EQUAL TO J.L. INDUSTRIES "SATURN SERIES - MODEL 15" WALL MOUNTED, WET CHEMICAL TYPE K UL RATED, 6 LITER CAPACITY FIRE EXTINGUISHERS WITH PRESSURE GAUGE. (OR EQUAL)




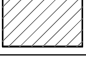
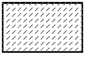
SYMBOL	FURNITURE
T-1	BOOTH TABLE, 4-TOP, 24"x44" (BOOTH 6'-0" x
T-2	BOOTH TABLE (ADA), 4-TOP, 36"x44" (BOOTH 7'-
T-3	FREESTANDING TABLE, 2-TOP, 24"x27"
T-4	FREESTANDING TABLE, 2-TOP, 30" DIA.
T-5	FREESTANDING TABLE, 4-TOP, 48"x30"
T-6	FREESTANDING TABLE (ADA), 4-TOP, 48"x27"

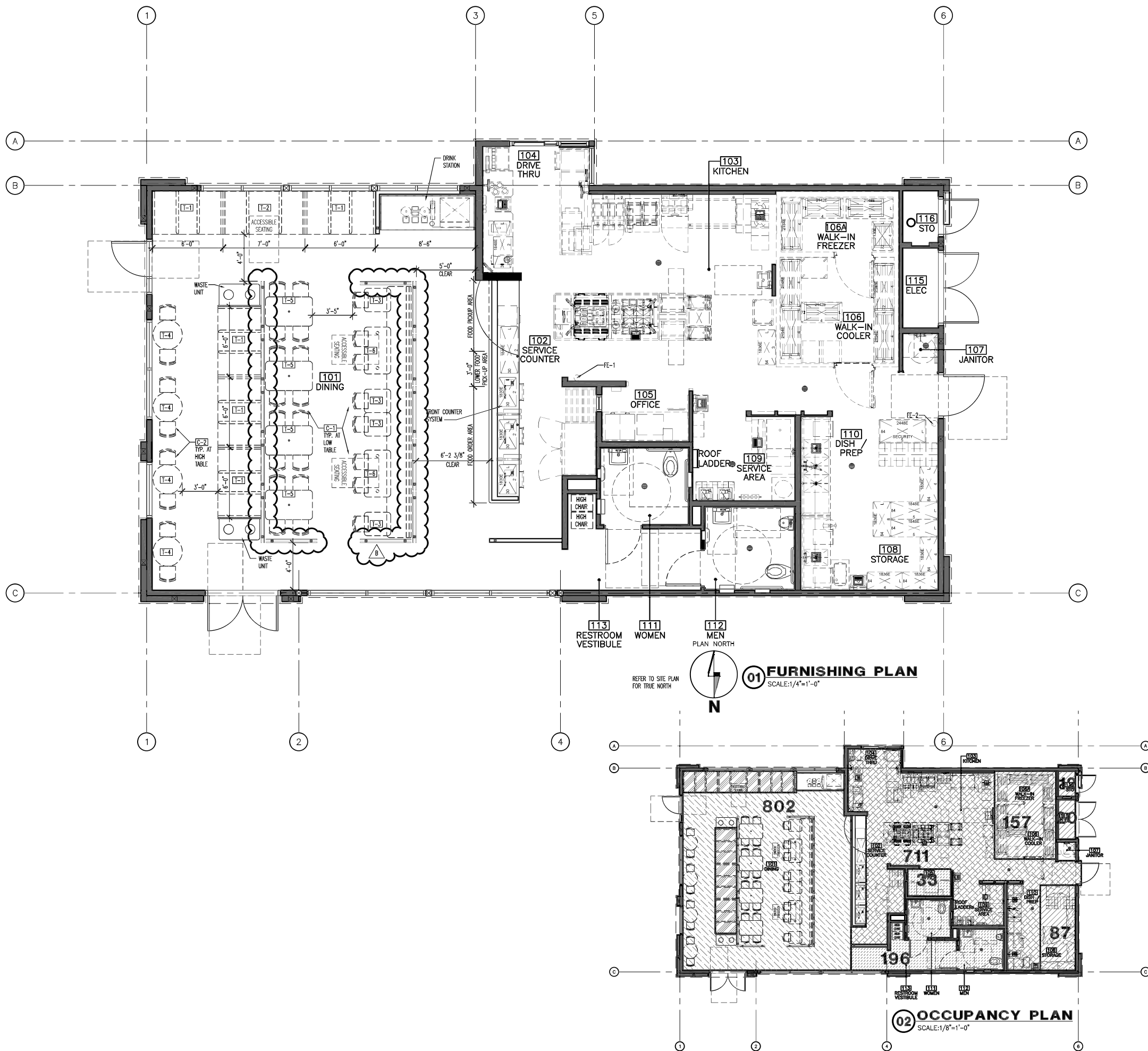
C-1	CHAIR, TABLE HEIGHT, GREEN
C-2	CHAIR, COUNTER HEIGHT, RED
P-1	PATIO TRASH CONTAINER
P-2	PATIO ASHTRAY

<b>Interior Seating</b>	<b>PARTIES</b>	<b>SEATS</b>
<b>DINING:</b>		
4-TOP BOOTH	6	24
2-TOP TABLE, LOW	4	8
2-TOP TABLE, HIGH	4	8
4-TOP TABLE	6	24
<b>Total Seating</b>	<b>20</b>	<b>64</b>

FROM OCCUPANCY CALCULATIONS BASED ON 2009 IBC

OCCUPANTS ARE CALCULATED IN EACH  
INDIVIDUAL SPACE, THEN ROUNDED UP

ASSEMBLY AREAS		TOTAL SQ. FT.	SEAT COUNT
	<b>ASSEMBLY w/o FIXED SEATING</b> (“UNCONCENTRATED TABLES AND CHAIRS”) 15 NET	802	54
	<b>ASSEMBLY w/ FIXED SEATING</b> 1 PERSON FOR EACH 24 INCHES OF BOOTH SEAT LENGTH		24
	<b>KITCHENS - COMMERCIAL</b> 200 GROSS	711	4
	<b>MECH/STORAGE</b> 300 GROSS	276	1
	<b>BUSINESS AREAS/ ACCESSORY</b> 100 GROSS	229	3
<b>TOTAL OCCUPANTS</b>			<b>86</b>



X-BASE- MILTON\_PROTO 4-5.DWG  
X-TB-130060\_STAMP.DWG  
ROB BUDETTI-GA.DWG

PRINTED BY: DAVIDM  
DRAWING NAME: A112-130060.DWG  
LAYOUT: A112  
XREFS ATTACHED: