

**FOR LEASE**

**1,500-3,000 SF**

# Northeast Bend Industrial Spaces

62980 Boyd Acres Road, Bend, OR 97701



PHOTO OF SIMILAR UNIT



PHOTO OF SIMILAR UNIT

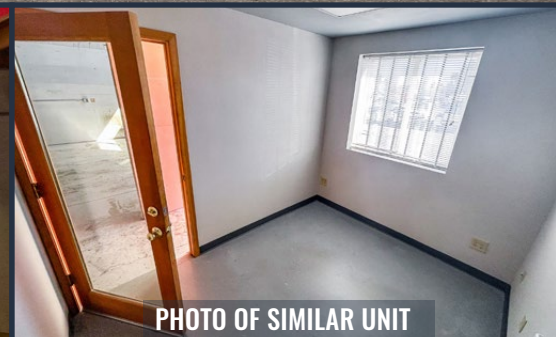


PHOTO OF SIMILAR UNIT

## PROPERTY DETAILS

- Unit A7:** 1,500 SF
- Unit A8:** 1,500 SF
- Lease Rate:** \$1.10/SF/Mo. NNN
- NNN Exp.:** Est. at \$0.23/SF/Mo.  
*(Electricity, gas, phone and internet paid by tenant)*
- Zoning:** Light Industrial (IL)
- Date Avail.:** October 1st, 2026

## HIGHLIGHTS

- Each unit is comprised of a warehouse with a 14' roll-up door, office and a private restroom
- Mezzanine storage
- 3 phase electrical service
- Yard and parking for large vehicles available
- Easy access off of Empire Ave. and Hwy 97
- Located in the Brinson Business Park

**Russell Huntamer, CCIM | Jay Lyons, SIOR, CCIM**  
**Eli Harrison, Broker**

600 SW Columbia St., Ste. 6100 | Bend, OR 97702  
**541.383.2444** | [www.CompassCommercial.com](http://www.CompassCommercial.com)

**COMPASS**  
COMMERCIAL

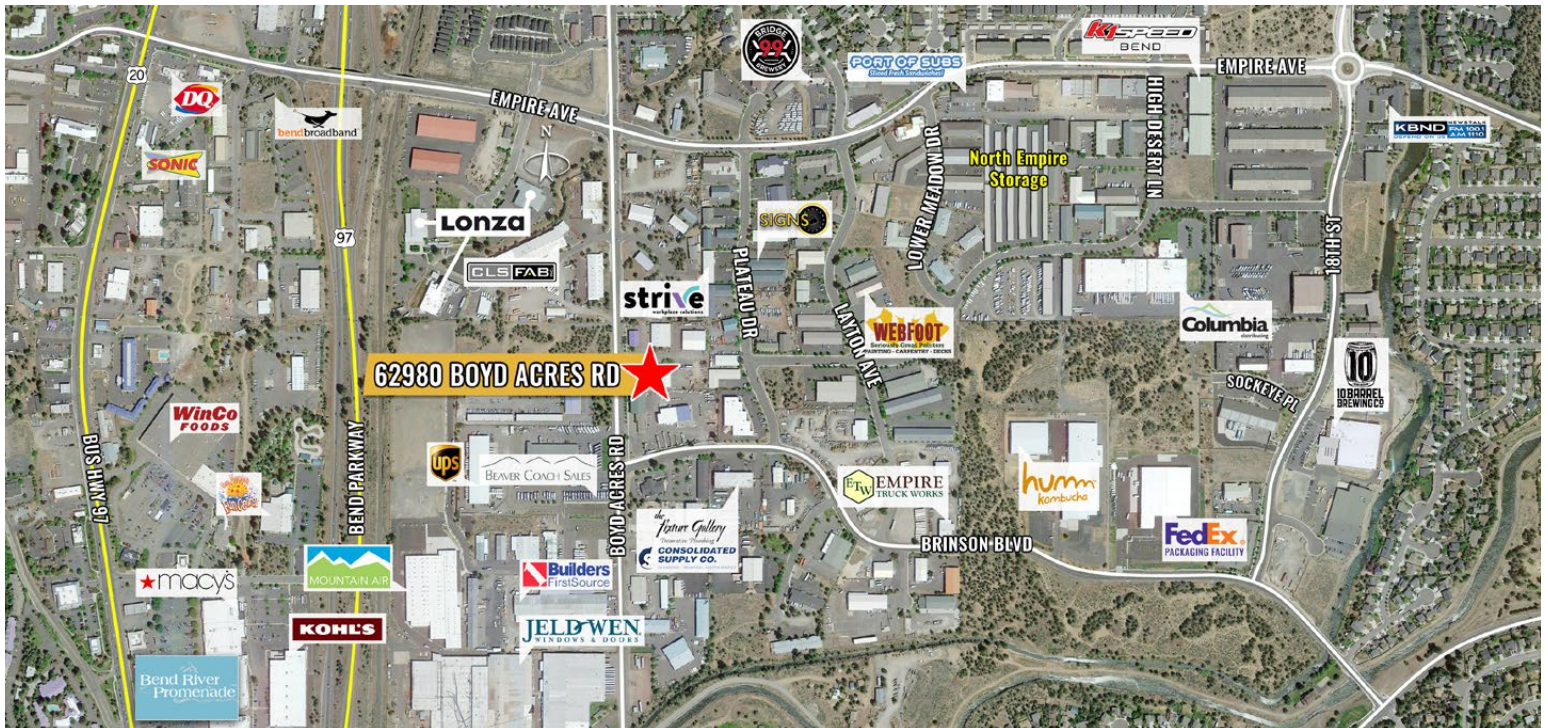
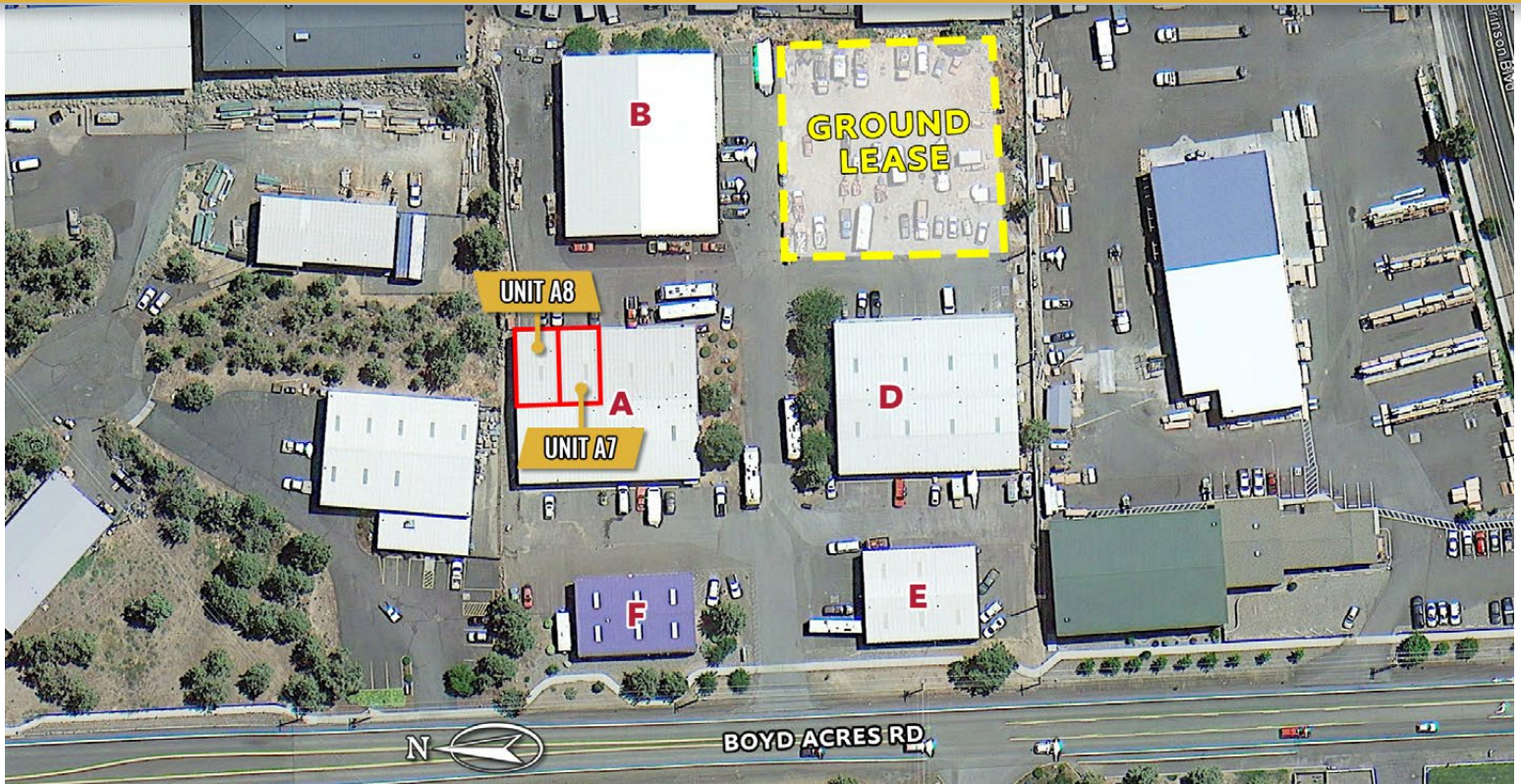
**REAL ESTATE SERVICES**

# FOR LEASE

## 1,500-3,000 SF

# Northeast Bend Industrial Spaces

62980 Boyd Acres Road, Bend, OR 97701



Brokers are licensed in the state of Oregon. This information has been furnished from sources we deem reliable, but for which we assume no liability. This is an exclusive listing. The information contained herein is given in confidence with the understanding that all negotiations pertaining to this property be handled through Compass Commercial Real Estate Services. All measurements are approximate.



**Russell Huntamer, CCIM**  
Partner, Principal Broker  
Cell 541.419.2634  
rh@compasscommercial.com



**Jay Lyons, SIOR, CCIM**  
Partner, Principal Broker  
Cell 541.410.6519  
jlyons@compasscommercial.com



**Eli Harrison**  
Broker  
Cell 541.977.2890  
eharrison@compasscommercial.com

**COMPASS COMMERCIAL**  
REAL ESTATE SERVICES