

FOR LEASE
1,949 SF

Renovated Cherry Creek
North Office Space



3003 E. 3rd Avenue

Property Overview

- Well-located, professional office building in Denver's premier Cherry Creek North neighborhood
- Updated 1,949 SF space with glass doors and walls for abundant natural light to flow throughout
- Rare private parking for office tenants at \$135/month/space
- Ideally positioned with immediate access to more than 90 restaurants, shopping, fitness, and more
- Easy access to Colorado Blvd, University Blvd, 6th Ave Pkwy, Speer Blvd, and Leetsdale Dr

Lease Rate: \$35.00 PSF MG

Property Facts

Available SF:	1,949 SF
Building SF:	25,979 SF
Year Built / Renov.:	1976 / 1998

For more information:

Celine Farhadi

310 (271) 2019

celine@roncoinc.net



8424 Santa Monica Blvd.
West Hollywood, CA Ste. 804 90069
(310) 271-2019

FOR LEASE

1,949 SF

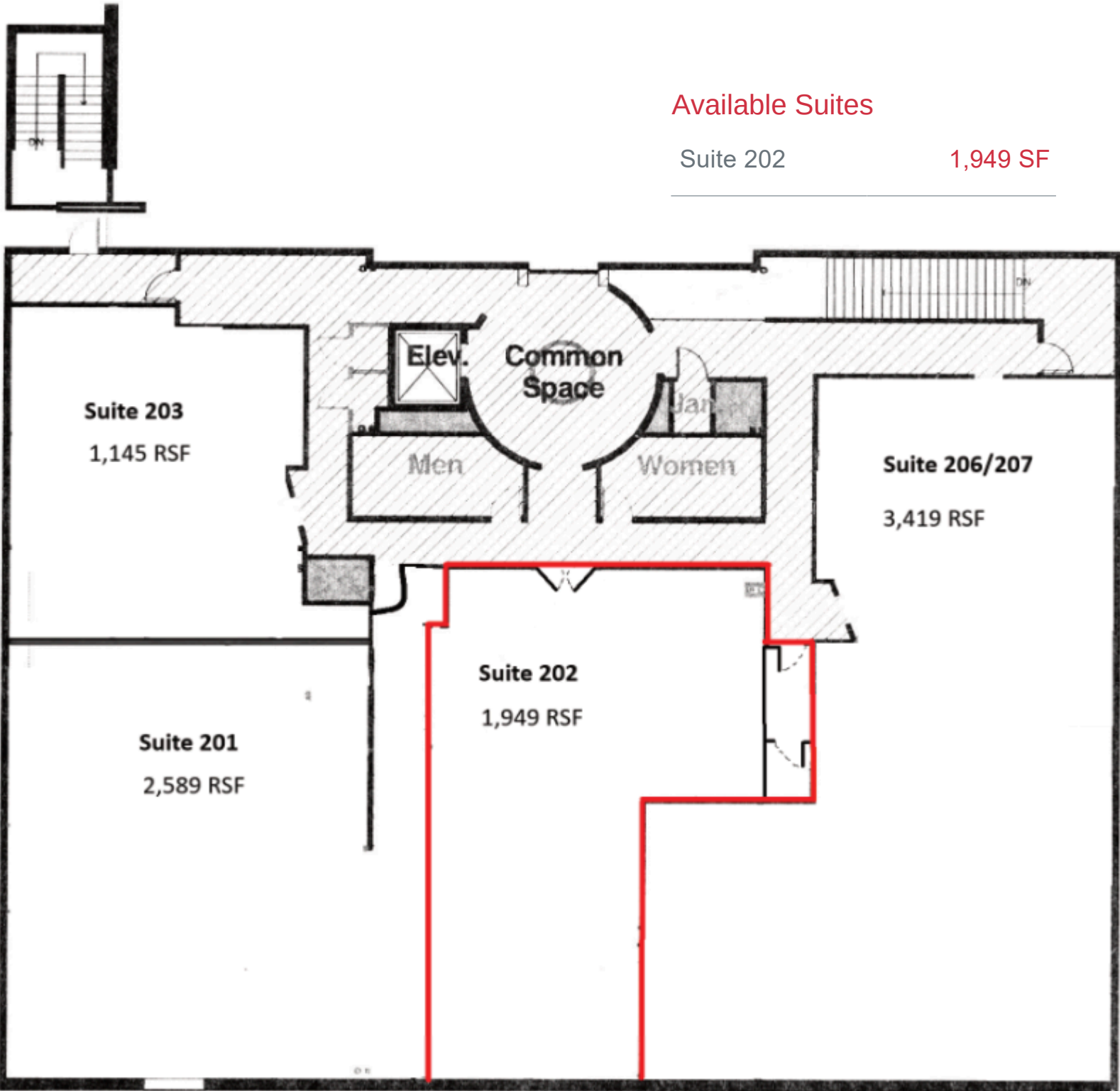
3003E 3rdAve #202

Denver, Colorado

Available Suites

Suite 202

1,949 SF



FOR LEASE

1,949 SF

3003E. 3rd Suite #202
Denver, CO



For more information:

Celine Farhadi
(310) 271-2019
celine@roncoinc.net