

FOR LEASE

FLEX CONDO

25 NORTH 400 WEST UNIT 8
NORTH SALT LAKE, UT 84054



PROPERTY SUMMARY

2,950 SF industrial/flex space featuring a 12x14 GL door, 20' clear height, 3-phase power, and ample parking. Layout includes a 30x42 shop area, 7 offices, reception area, secure storage room, and 2 bathrooms. Located in NSL's MD zone with recent updates to paint, carpet, and bathrooms.

SQUARE FEET

2,950 SF

BASE RENT

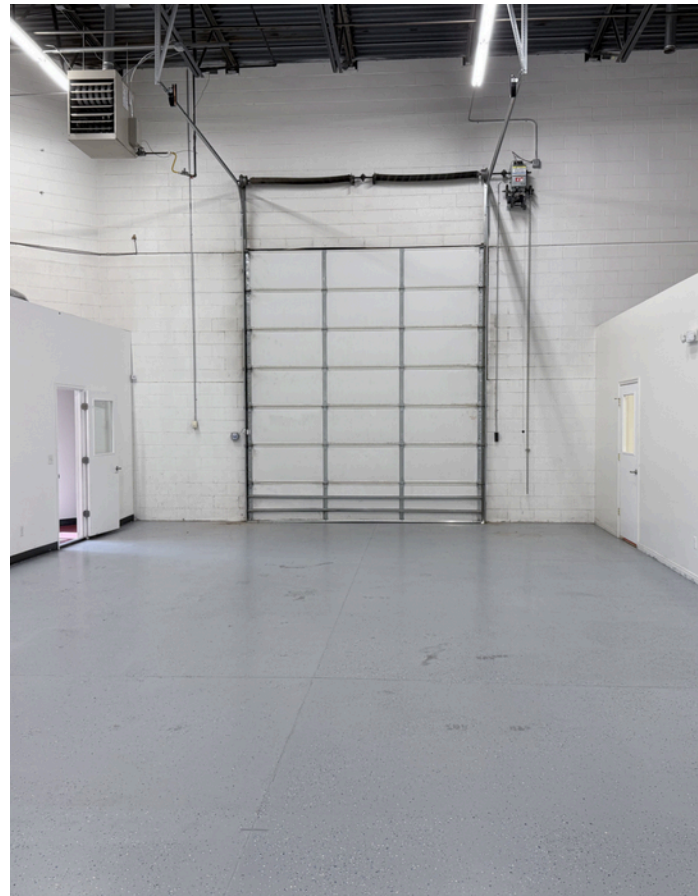
\$1.10 SF/MO

CAM FEES

\$475/MO

DETAILS

12x14 GL Door
20' Clear Height
30x42 Shop Space
7 Offices
15x18 Secure Storage room
2 Bathrooms
Reception Area
NSL "MD" Zone
3-Phase Power
Ample Parking
Updated Paint, Carpet, Bathrooms

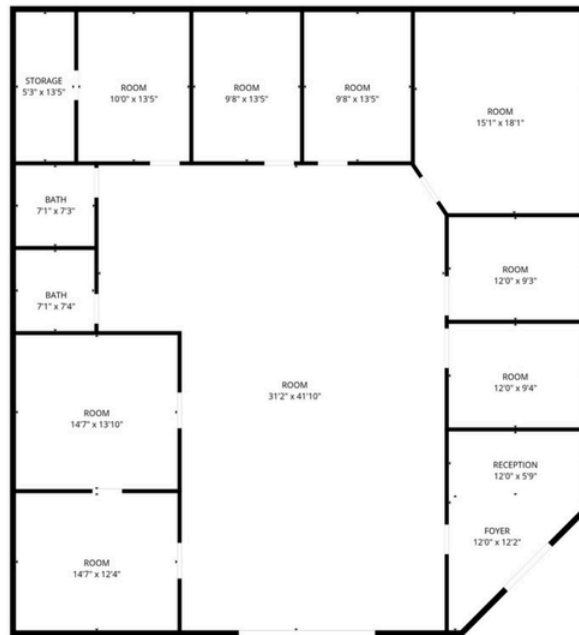


ADAM D. VON MAACK, JD
ADAM@ACRESUTAH.COM
801.913.6157

ALIGN
COMPLETE REAL ESTATE SERVICES



FLOOR PLAN



FLOOR PLAN CREATED BY CUBICASA APP. MEASUREMENTS DEEMED HIGHLY RELIABLE BUT NOT GUARANTEED.



ADAM D. VON MAACK, JD
 ADAM@ACRESUTAH.COM
 801.913.6157

ALIGN
 COMPLETE REAL ESTATE SERVICES