

Discovery Point II

One-Of-A-Kind Opportunity in the Central Florida Research Park



150,000± sf | Light Industrial Space

**AVISON
YOUNG**

Greg Morrison, CCIM, SIOR
Principal
407.440.6640
greg.morrison@avisonyoung.com

Emily Zinaich
Senior Vice President
407.440.6641
emily.zinaich@avisonyoung.com

Owned by:





Introduction

Discovery Point II, is located directly south of the University of Central Florida in Orlando's renowned **Central Florida Research Park**. The Central Florida Research Park is a campus-like environment situated on 1,027± acres with ideal access to all major thoroughfares (S.R. 434, Highway 50, S.R. 408 and S.R. 417) and home to over 145 businesses. There are on-site hotels, as well as bank and restaurants for the 10,000± employees who work on campus.

PROPERTY HIGHLIGHTS

ONLY TRUE OFFICE/LIGHT INDUSTRIAL SPACE IN THE CENTRAL FLORIDA RESEARCH PARK

FOUR INDUSTRIAL BUILDINGS RANGING FROM 33,000± - 39,000± SF

GRADE LEVEL AND RAMP ACCESS

**32' - 0" CLEAR CEILING HEIGHT
6" OUTSIDE SPEED BAY**

**TYPICAL BUILDING WILL BE 355' X 110'
STANDARD BAYS WILL BE 52'**

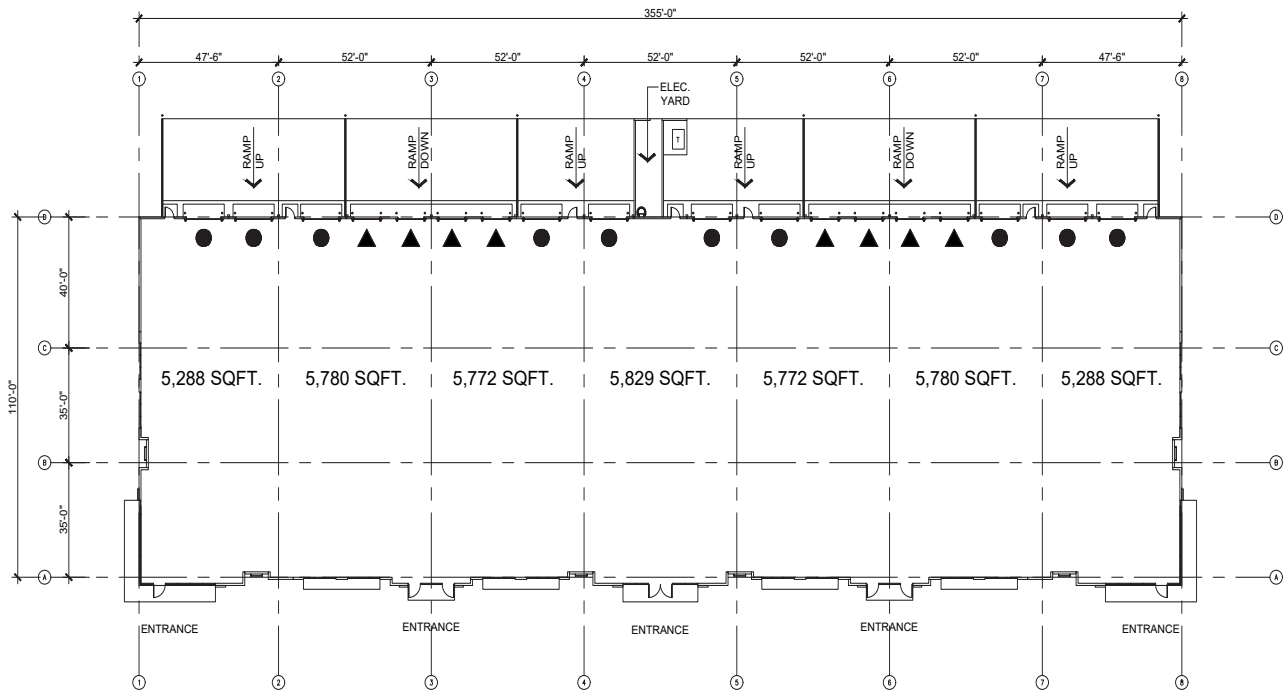
**10 ROLL-UP DOORS (12' X 16')
8 DOCK-DOORS (9' X 10')**

**TRUCK COURT DIMENSIONS
APPROXIMATELY 63'**

TARGET DELIVERY MID-2026



Site Plan



**AVISON
YOUNG**

Greg Morrison, CCIM, SIOR
Principal
407.440.6640
greg.morrison@avisonyoung.com

Emily Zinaich
Senior Vice President
407.440.6641
emily.zinaich@avisonyoung.com

Owned by:

