

FOR LEASE

Owned and Operated by



Hayward Business Park

30996 Santana Street, Hayward, CA

±17,640 SF



**LEASING INFO
& CONTACT**

Garrett Dunn

(925) 297 9449 / garrett.dunn@colliers.com

Chris Stauber

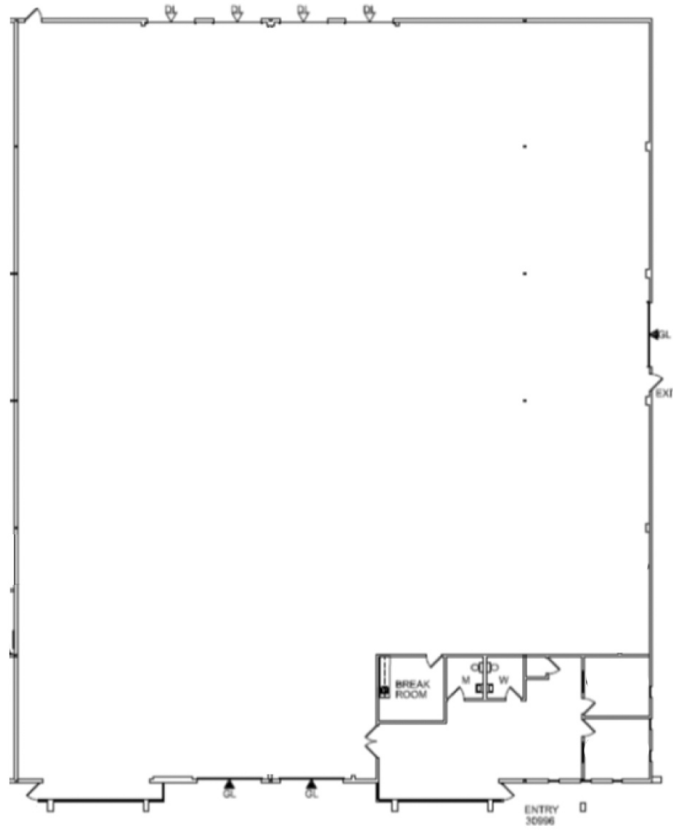
(925) 964 3277 / chris.stauber@colliers.com

John Lagomarsino

(925) 885 9320 / john.lago@colliers.com



This is not an offer or acceptance of an offer to lease space. A lease will only be offered or made in a written agreement signed by landlord. No representation or warranty of any kind is made by landlord unless set forth in a written definitive lease executed by the landlord.



Property Specifications:

- Corner unit
- ±1,000 SF office, balance warehouse space
- Four (4) dock-high doors
- Three (3) grade level doors
- ±18' clear height
- Fully sprinklered
- Easy access to Hwy I-880

Lease Rate: \$1.30/SF/Month, NNN
 (\$0.24/SF/Month, OPEX)

Available with 30 days notice.
Call Brokers for Touring Instructions.



Site Plan

