

HISTORIC CITY CENTER OFFICE FOR LEASE

FREE RENT AVAILABLE



Your paragraph text

10 WEST 100 SOUTH, SALT LAKE CITY, UTAH 84101

PROPERTY HIGHLIGHTS

- Professional Office Environment with Unique Character & Charm
- Suite 621: 900 RSF - Office
- Suite 700: 2,000 RSF - 8,000 RSF Office
- Co-Tenants Include: Starbucks, Subway, Cotopaxi & Neighbors City Creek Mall
- Nearby Access to Retail, Restaurant & Transit Options
- Prime Location in the Heart of Downtown within the Central Business District

LEASE RATE: \$26.00/SF Full Service

DEMOGRAPHICS

	1 Mile	3 Mile	5 Mile
Population	15,537	57,003	92,298
Households	28,842	147,819	251,715
Avg. Household Income	\$71,948	\$86,374	\$89,001

TRAFFIC COUNTS

State Street: 31,000 Annual Average Daily Traffic

South Temple: 25,000 Annual Average Daily Traffic

CONTACT

801.617.1700

GAVIN PERRYMAN |

GAVIN.PERRYMAN@CRCNATIONWIDE.COM

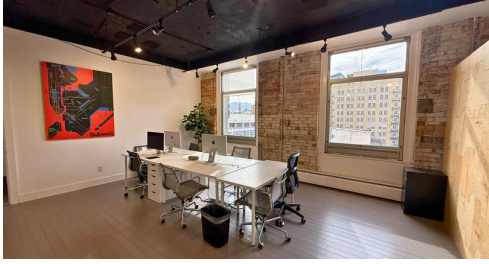
WEST HARADIN |

WEST.HARADIN@CRCNATIONWIDE.COM

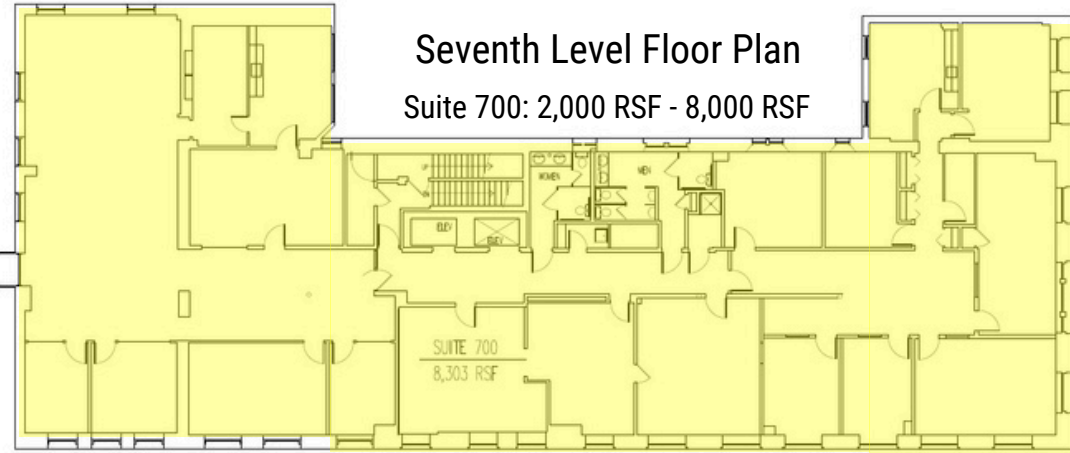
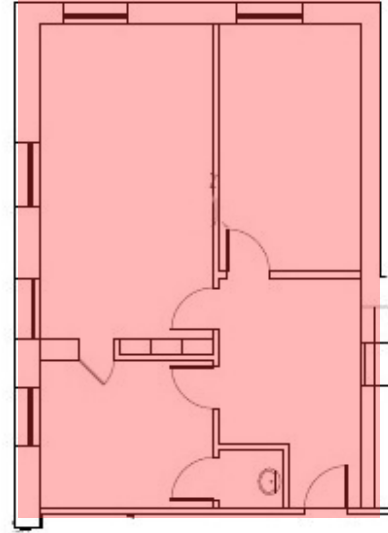


HISTORIC CITY CENTER OFFICE FOR LEASE

10 WEST 100 SOUTH, SALT LAKE CITY, UTAH 84101



Suite 621: 900 RSF



Seventh Level Floor Plan

Suite 700: 2,000 RSF - 8,000 RSF



This information is given with the understanding that all negotiations and/or real estate activity related to the property described above shall be conducted through this cRc Nationwide office. The above information while not guaranteed, was obtained from sources we believe to be reliable.

CONTACT

801.617.1700

GAVIN PERRYMAN |

GAVIN.PERRYMAN@CRCNATIONWIDE.COM

WEST HARADIN |

WEST.HARADIN@CRCNATIONWIDE.COM