

M E R I D I A N

147 S. CHERRY STREET, SUITE 200 | WINSTON-SALEM, NC 27101 | P 336.722.1986 | F 336.723.3173 | MERIDIANREALTY.COM

Flex Office | Retail

# 3301 Healy Drive

Winston-Salem, NC 27103



For more information:

**Mark E. Fulk**

Mfulk@meridianrealty.com

336.480.2080

**FOR LEASE: \$12.00 PSF (NNN)**

WWW.MERIDIANREALTY.COM

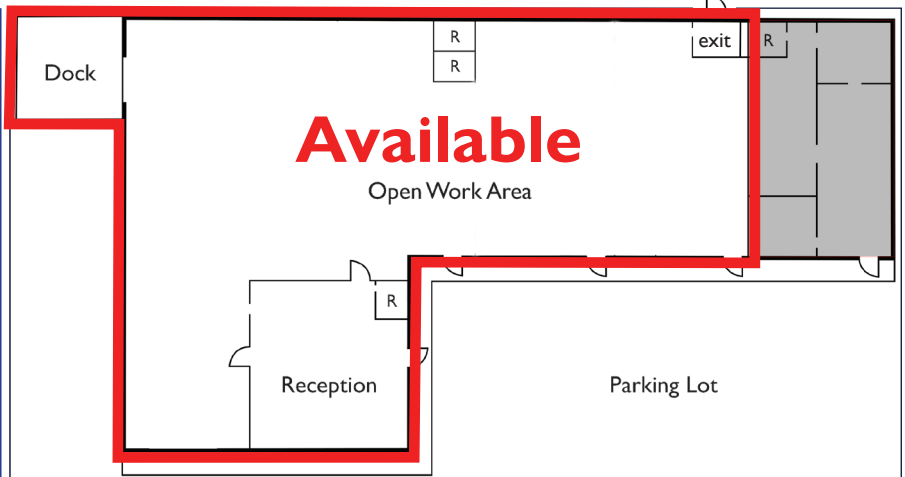
AERIAL



Property Detail

- 5,826± S.F.
- 13± Parking Spaces
- Loading Dock
- 8'-12' Ceilings
- Zoned GB

**Lease: \$12.00 PSF (NNN)**



No warranty or representation (express or implied) is made as to the accuracy or completeness of the information set forth herein. All information is submitted subject to errors, omissions, change of price, prior lease or sale, and withdrawal without notice. All marketing material produced by the Meridian Realty Group is proprietary. Any reproduction is expressly prohibited.



THE MERIDIAN REALTY GROUP | 147 S. CHERRY STREET, SUITE 200 | WINSTON-SALEM, NC 27101

P 336.722.1986 | F 336.723.3173