



For Sale /For Lease
Light Industrial
Condo Suites



OTSEGO INDUSTRIAL CONDO SUITES

Sales Price: \$283,900 Lease Rate: \$1,500/NNN

Building Size: 7,200/sf 6-Condo's
(Minimum Divisible: 1,200/sf)

10120 - 10160 72nd St NE, Otsego, MN 55301

Sheila Zachman, Broker
763.244.0600
SZachman@Crs-Mn.com

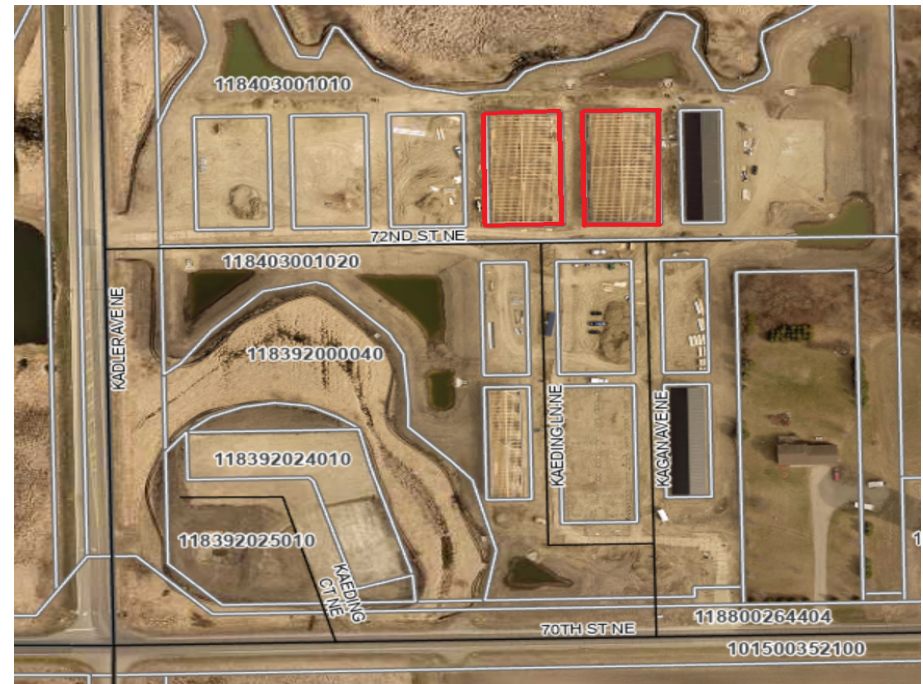


PROPERTY LOCATION

- * North of I-94
- * West of Labeaux
- * Businesses in the Area Include:
 Bury Companies, Michels Corporation, Dakota Supply,
 Knife River, Kaleidoscope Charter School,
 Lennar at Castella Meadows and Kittredge Crossings Townhomes

TRAFFIC COUNTS - 2025

- * I-94 - 65,079 VPD
- * 70th Street NE - 4,420 VPD
- * Kadler Ave NE - 1,313 VPD



The information contained herein was obtained from sources believed to be reliable, but Commercial Realty Solutions has not verified nor has any knowledge regarding the accuracy of information and makes no representation or warranty concerning the same. Therefore, Commercial Realty Solutions disclaims all liabilities in connection with any inaccuracies or incompleteness. This marketing material is for the implicit use by Commercial Realty Solutions for the marketing of their listings and is not for use by other brokerage(s).

PROPERTY OVERVIEW

10120-10160 72nd St NE, Otsego, MN

Sales Price
\$283,900.00

Lease Rate
\$1,500.00 NNN

Operating Expenses	\$500.00 (Taxes \$250, HOA \$250)
Building Size	7,200/sf (Min. Divisible 1,200/sf) (6-Condo's - 30' x 40' each)
Wright County PIDs	10120 - 4D 118392014010 \$1,984.00
2026 Taxes	10120 - 4E 118392014010 \$1,984.00
	10120 - 4F 118392014010 \$1,984.00
	10160 - 5D 118392015010 \$1,984.00
	10160 - 5E 118392015010 \$1,984.00
	10160 - 5F 118392015010 \$1,984.00
Zoned	PUD Planned Unit Development
Year Built	2025
Number of Floors	One (1)
Other	Maintenance Free Exterior Parking Spaces - 3 to 4



This information has been secured from sources we believe to be reliable, but we make no representations or warranties explained or implied as to the accuracy of the information. Buyer must verify the information and bears all risk for any inaccuracies.

SITE PLAN



10120 72nd Street NE			
4D	118-392-014010-4D	1,200/sf	Available
4E	118-392-014010-4E	1,200/sf	Available
4F	118-392-014010-4f	1,200/SF	Available
10160 72nd Street NE			
5D	118-392-015010-5D	1,200/sf	Available
5E	118-392-015010-5E	1,200/sf	Available
5F	118-392-015010-5F	1,200/sf	Available

INTERIOR PHOTOS



PROPERTY INFORMATION

- * Steel Lined & Insulated Interior Walls & Ceilings
- * 5 Inch Concrete Floors with Drains
- * City Water & Sewer
- * 100 Amp Electrical Service, 3 Phase Available
- * Hanging Natural Gas Heater
- * LED Lighting
- * Exterior Lighting & Landscaping
- * High Speed Internet Available
- * 18' Clear Height
- * 12' x 14' Insulated O.H. Door w/Windows & Jack-Shaft Heavy Duty Opener
- * 1 Steel Entry Door
- * Plumbing Stubbed for Bathroom

(Association Includes: Trash Removal, Lawn Maintenance & Snow Removal)