



Wyndham Creek Business Park

9142-9158 W 135th Street | Overland Park, KS

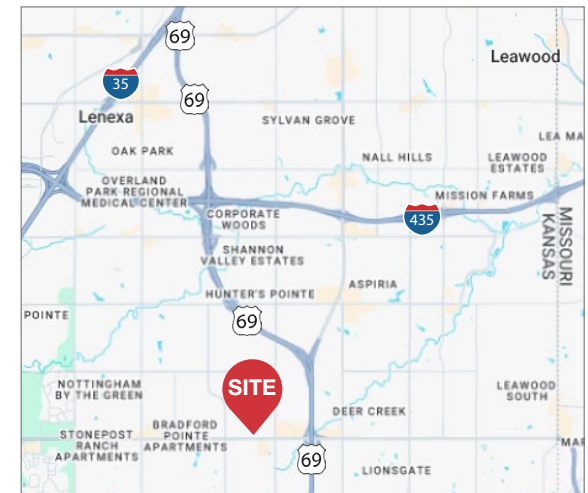
- ±1,000-3,500 SF Available
- Building signage with glass frontage
- Located directly behind QuikTrip
- Ideal location in a top tier demographic area
- Lease Rate: \$16.00-16.50/SF NNN

For more information:

Brandon LaSala

+1 913 956 5815

brandon@nai-heartland.com



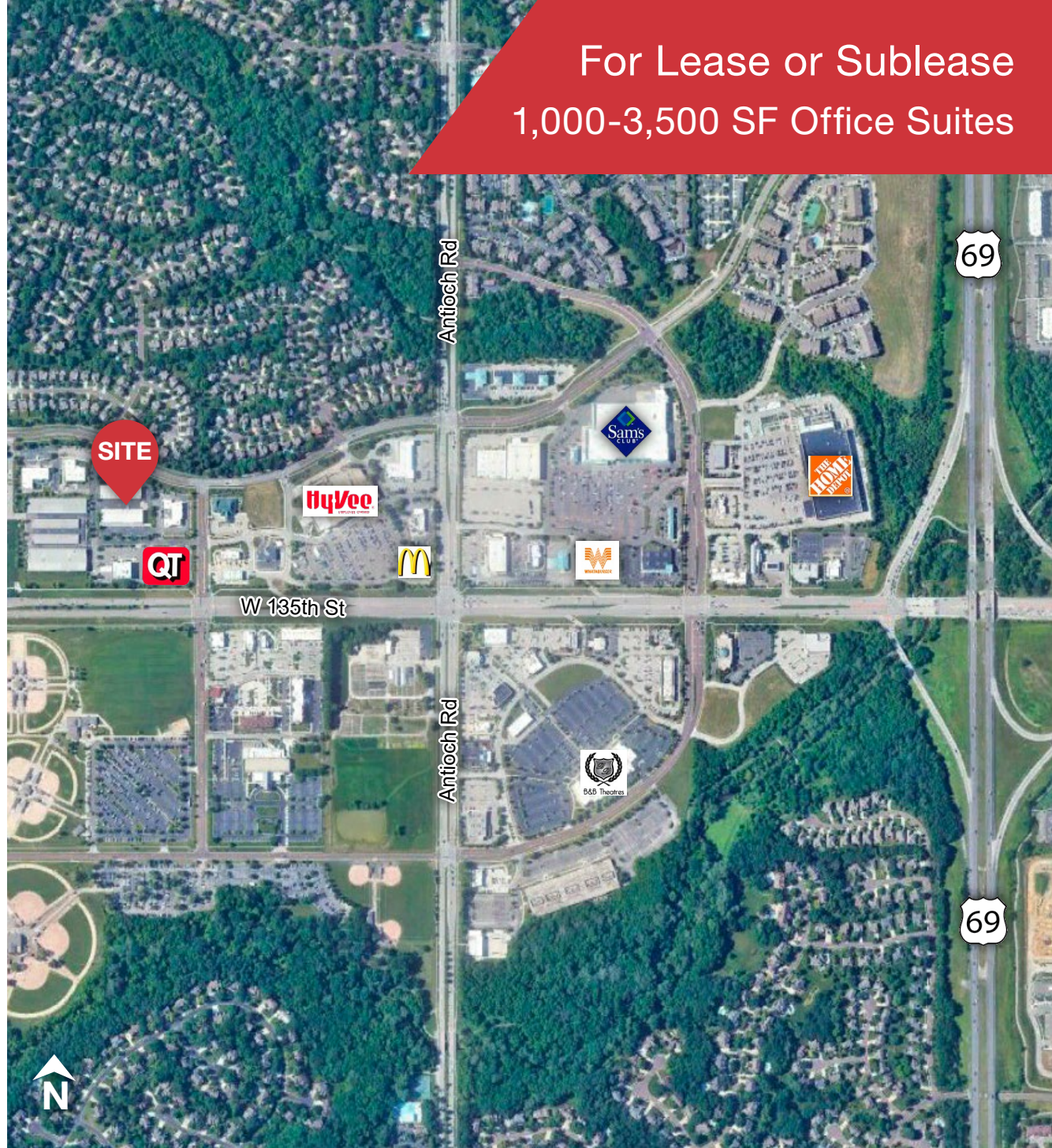


DEMOGRAPHICS			
	1 MILE	3 MILES	5 MILES
Est. Population:	9,916	98,523	231,582
Median HH Income:	\$140,992	\$121,120	\$120,363
Daytime Population:	8,945	95,190	269,776

For more information:

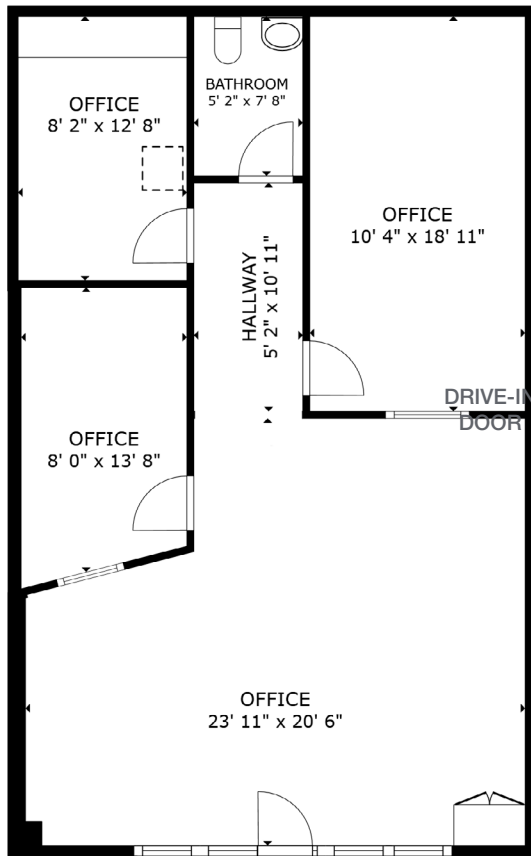
Brandon LaSala

+1 913 956 5815 • brandon@nai-heartland.com

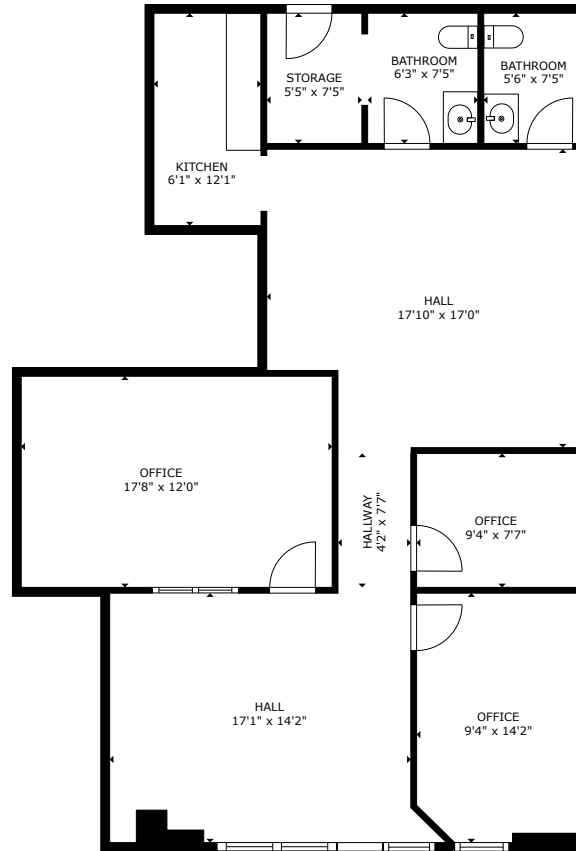


For Lease or Sublease
1,000-3,500 SF Office Suites

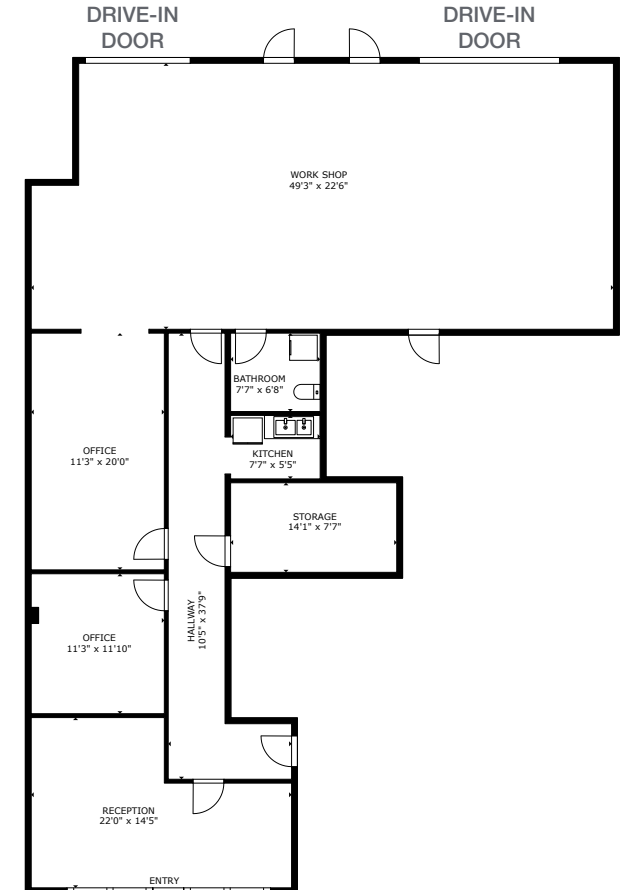
For Lease or Sublease
1,000-3,500 SF Office Suites



FLOOR PLAN



FLOOR PLAN



FLOOR PLAN

9146 W 135TH ST

- ±1,000 SF Available
- Sublease expires 7/31/2028
- Sublease Rate: \$16.50/SF NNN

9156 W 135TH ST

- ±1,353 SF Available
- Office buildout with two private restrooms and a break area
- Lease Rate: \$16.00/SF NNN

9158 W 135TH ST

- ±2,147 SF Available
- Sublease expires 12/31/2030
- Sublease Rate: \$16.00/SF NNN
- 1,100 SF of conditioned storage with two drive-in doors