



For Lease » Office Space

# 16 Beechwood Ave

Ottawa | Ontario



## Building Details

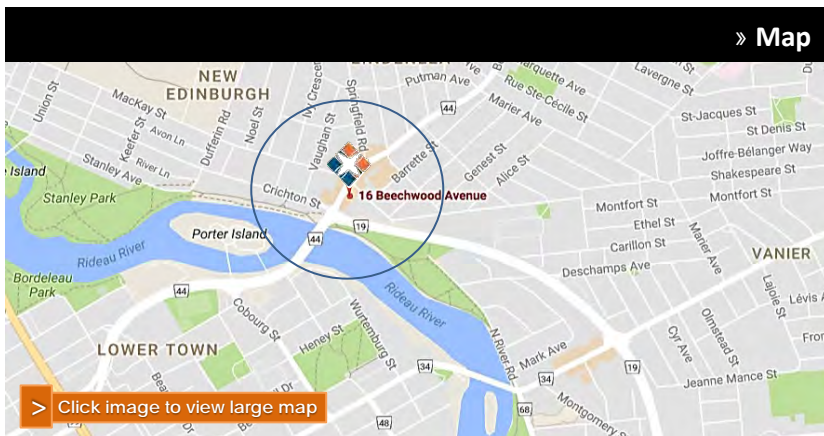
Building Size:	22,971 sf
Number of Floors:	3
Net Rent:	\$16.00
Operating Costs:	\$19.55

## Space for Lease

Sq. ft.	Availability
1,175	Immediately
775	May 1 <sup>st</sup> , 2024

## BUILDING KEY FEATURES + HIGHLIGHTS

- + Beautiful 3-storey brick building with copper roofing.
- + Multi use retail, office and residential apartment building.
- + Magnificent landscaping with patios and seating area.
- + Large showcase windows
- + Indoor parking and storage available
- + At the corner of Beechwood Ave and Charlevoix Ave
- + Minutes to downtown
- + Access to HWY 417 via Vanier Parkway
- + Within a block to Rideau River/bike/walking paths
- + Situated in trendy New Edinburgh village
- + Adjacent to many other shops and restaurants



> Click image to view large map

## For More Information Contact

451 Daly Ave., 2<sup>nd</sup> Floor  
Ottawa, Ontario K1N 6H6  
www.elkproperty.com

**Karen Braye**

Tel: 613-244-1012 ext: 200  
Cell: 613-229-8723  
kbraye@elkproperty.com



**ELK**  
PROPERTY MANAGEMENT LIMITED

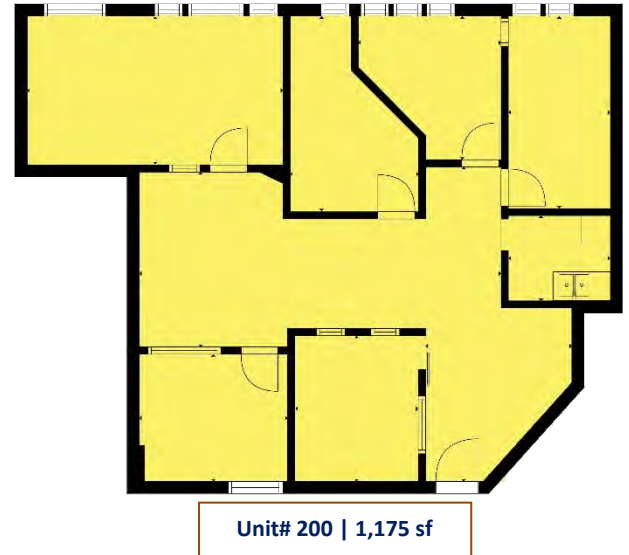
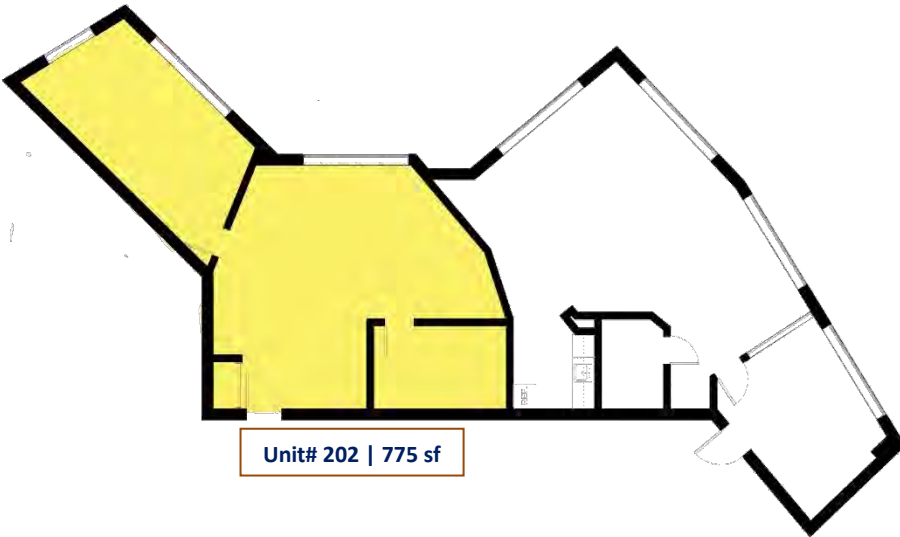


For Lease » Office Space

**16 Beechwood Ave**

Ottawa, Ontario

» Floor plan



» Nearby Amenities

**metro**

**Ohruvees**



**STARBUCKS™**

**Guardian**  
Your Friendly Neighbourhood Pharmacy

**Shell**

» Additional Highlights

+ Reception Area    + Private Offices    + Utilities/Underground parking extra

» Pictures



For More Information Contact

451 Daly Ave., 2<sup>nd</sup> Floor  
Ottawa, Ontario K1N 6H6  
[www.elkproperty.com](http://www.elkproperty.com)

**Karen Braye** Tel: 613-244-1012 ext: 200  
Cell: 613-229-8723  
[kbraye@elkproperty.com](mailto:kbraye@elkproperty.com)



**ELK**  
PROPERTY MANAGEMENT LIMITED