



## PROPERTY OVERVIEW

## AREA MAP

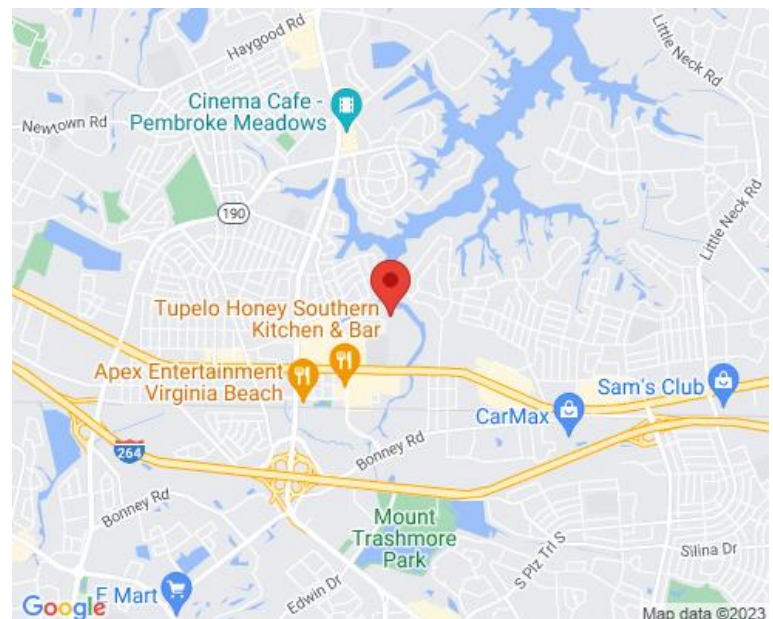
The search for a corporate address that reflects Virginia Beach's business style ends at **Corporate Center VI**. Located in the heart of the Central Business District.

- A full-service, Class A, 3-story building
- Minutes from Virginia Beach Boulevard, Independence Boulevard and the Virginia Beach-Norfolk Expressway (I-264)
- Area services include banking, hotels, restaurants, conference facilities, Town Center and Pembroke Square

**AVAILABLE: 1ST Floor - 1,614, 1886 & 2,693 SF**  
**2ND Floor - 2,904 & 5,902 SF 3RD Floor - 2,316 SF**

For interior view, click link below:

<https://my.matterport.com/show/?m=e4JgVX58GLC&brand=0>



FOR MORE INFORMATION, PLEASE CONTACT:

**TRAVIS BODE**

757-490-3141

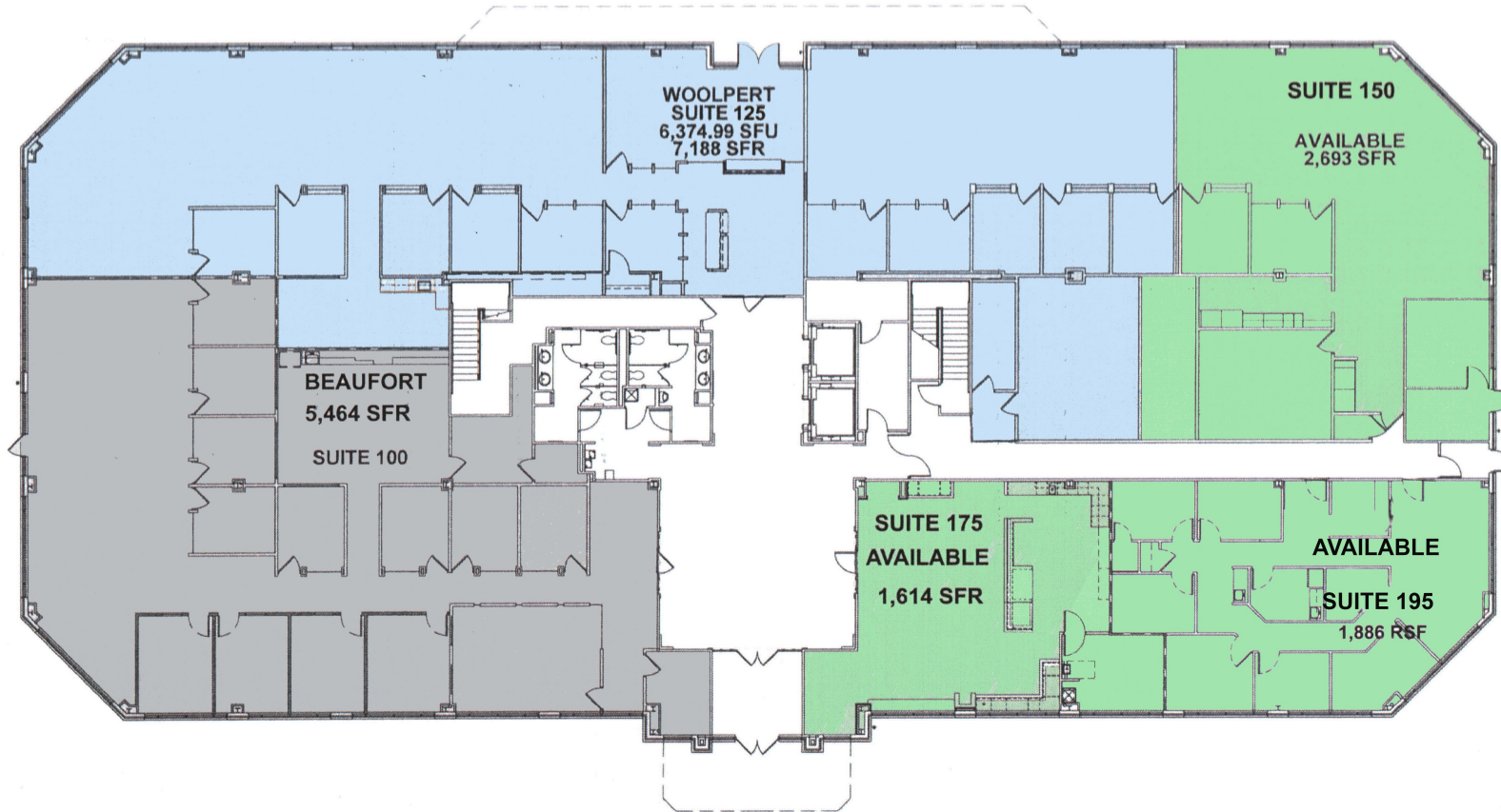
[tbode@pembrokerealty.com](mailto:tbode@pembrokerealty.com)

**Pembroke Realty Group**

4433 Corporation Lane, Suite 250

Virginia Beach, VA 23462

[www.pembrokerealty.com](http://www.pembrokerealty.com)



## CORPORATE CENTER VI

12.14.2021  
1/16" = 1'-0"



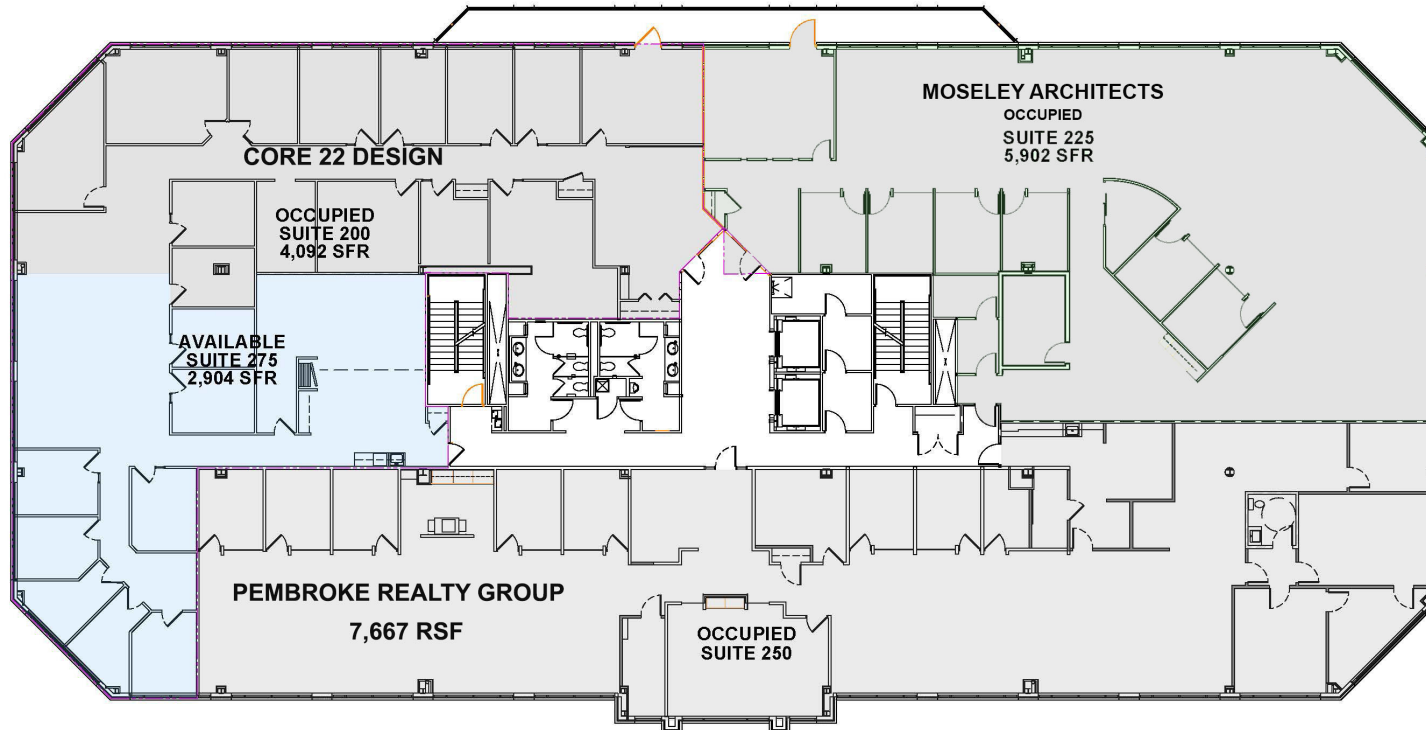
FIRST FLOOR

MORRISETTE ARCHITECTURE  
Architecture, Planning and Interior Design  
TM&©MorrissetteArchitecture.com 757-427-0288

FOR MORE INFORMATION, PLEASE CONTACT:

**TRAVIS BODE**  
757-490-3141  
[tbode@pembrokerealty.com](mailto:tbode@pembrokerealty.com)

**Pembroke Realty Group**  
4433 Corporation Lane, Suite 250  
Virginia Beach, VA 23462  
[www.pembrokerealty.com](http://www.pembrokerealty.com)



## CORPORATE CENTER VI

6.8.2022  
1/16" = 1'-0"

**PEMBROKE**  
REALTY GROUP

4433 CORPORATION LANE  
SECOND FLOOR

**MORRISETTE ARCHITECTURE**  
Architecture, Planning and Interior Design  
TM © Morissette Architecture.com 757-637-0268

FOR MORE INFORMATION, PLEASE CONTACT:

**TRAVIS BODE**  
757-490-3141  
[tbode@pembrokerealty.com](mailto:tbode@pembrokerealty.com)

**Pembroke Realty Group**  
4433 Corporation Lane, Suite 250  
Virginia Beach, VA 23462  
[www.pembrokerealty.com](http://www.pembrokerealty.com)