

**FACTS & STATS**



**CHAPARRAL**  
BUSINESS CENTER



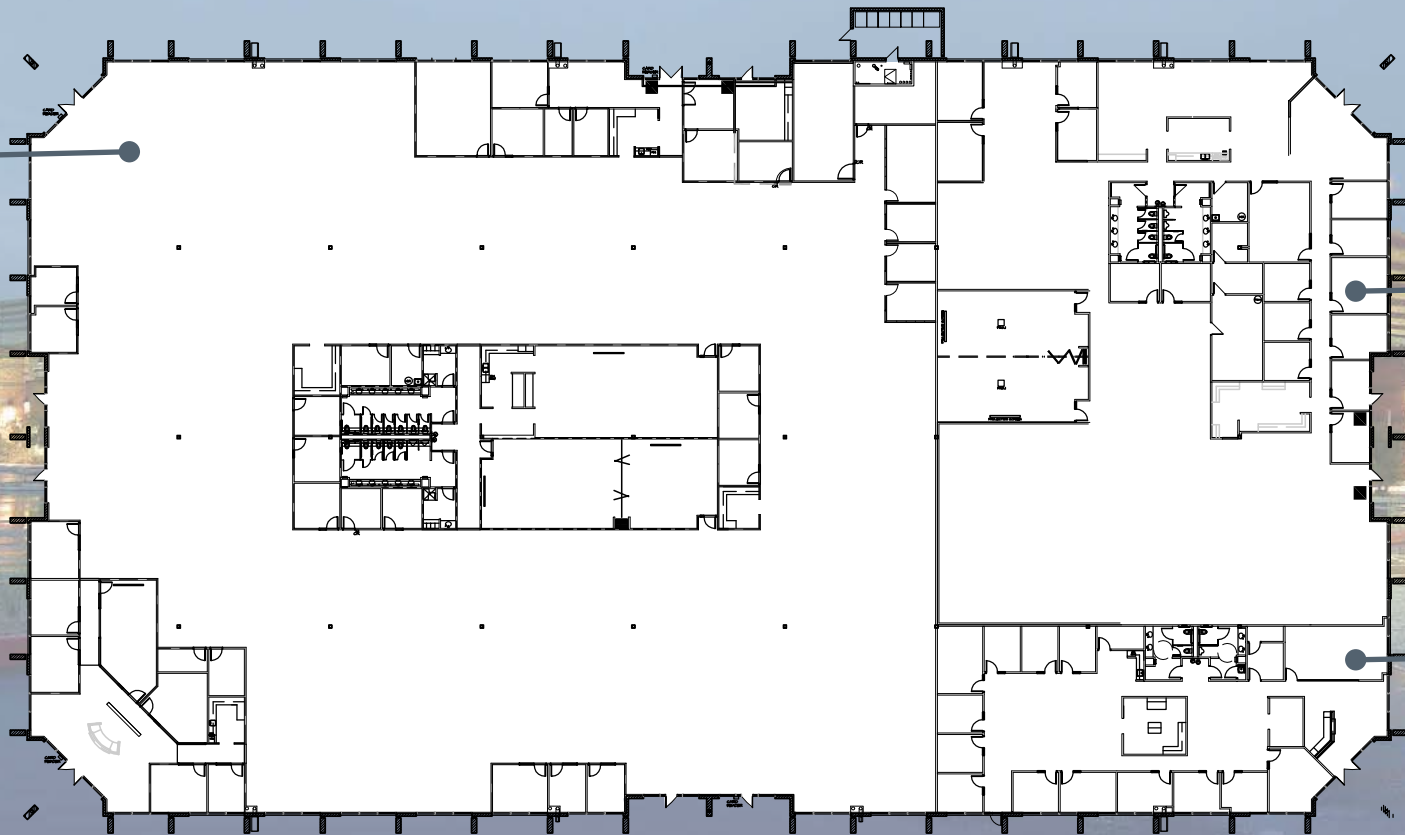
**CHAPARRAL BUSINESS CENTER PHASE VI - 5401 NORTH PIMA ROAD**

<b>Building RSF:</b>	±69,192 RSF
<b>Availabilities:</b>	Suite 100: ±46,182 RSF* Suite 125: ±5,660 RSF* Suite 150: ±17,350 RSF* <b>*Up To ±69,192 RSF Available</b>
<b>Lease Rate:</b>	\$28.50 FSG
<b>Tenant Improvements:</b>	Negotiable
<b>Parking:</b>	5.0/1,000 Canopy Covered - \$40.00/Stall/Month Surface Uncovered - No Charge



**FIRST FLOOR**  
*UP TO ±69,192 RSF*

Suite 100  
±46,182 RSF  
AVAILABLE



Suite 150  
±17,350 RSF  
AVAILABLE

Suite 125  
±5,660 RSF  
AVAILABLE



**FOR MORE INFORMATION CONTACT:**

**PAT BOYLE**  
+1 602 423 1905  
pat.boyle@cbre.com

**ERIN YORK**  
+1 602 689 6440  
erin.york@cbre.com

