



# 2100 SOUTH 2100 EAST, SALT LAKE CITY, UT

Premiere Mixed Use Project in the Heart of Salt Lake City's East Side  
Over 20,000 SF of New Retail/Restaurant Space

**QUIETLY MARKETED - 1,105 SF AVAILABLE | \$40 PSF | NNNS-\$8.50 PSF**

TwentyOnes



**TANNER OLSON**  
801.930.6752  
tolson@legendcommercial.com

**JOE MILLS**  
801.930.6755  
jmills@legendcommercial.com





## HIGHLIGHTS

- 20,500 SF OF PRIME RETAIL AND RESTAURANT SPACE
- 108 APARTMENTS OVER RETAIL
- LOCATED IN THE HEART OF SUGARHOUSE AND NEAR SALT LAKE COUNTRY CLUB
- 5 MIN DRIVE TO UNIVERSITY OF UTAH
- 10 MIN DRIVE TO DOWNTOWN
- WALKING DISTANCE TO SUGARHOUSE PARK
- OUTDOOR PATIOS AVAILABLE

## DEMOGRAPHICS

	1 MILE	3 MILE	5 MILE
2024 EST. POPULATION	16,725	125,295	287,558
2029 PROJECTED POPULATION	16,246	122,506	299,742
2024 EST. DAYTIME POPULATION	3,052	47,570	198,068
2024 EST. AVG HH INCOME	\$184,361	\$141,840	\$125,876
2024 EST. HOUSEHOLDS	6,666	53,256	128,310
2024 EST. BUSINESSES	550	4,944	16,662

## TRAFFIC

**2100 SOUTH**  
16,000 VEHICLES PER DAY

**2100 EAST**  
9,700 VEHICLES PER DAY



TwentyOnes

**TANNER OLSON**  
801.930.6752

tolson@legendcommercial.com

**JOE MILLS**  
801.930.6755

jmill@legendcommercial.com





# SITE PHOTOS

2100 SOUTH 2100 EAST  
SALT LAKE CITY, UT



TwentyOnes

**TANNER OLSON**

801.930.6752

[tolson@legendcommercial.com](mailto:tolson@legendcommercial.com)

**JOE MILLS**

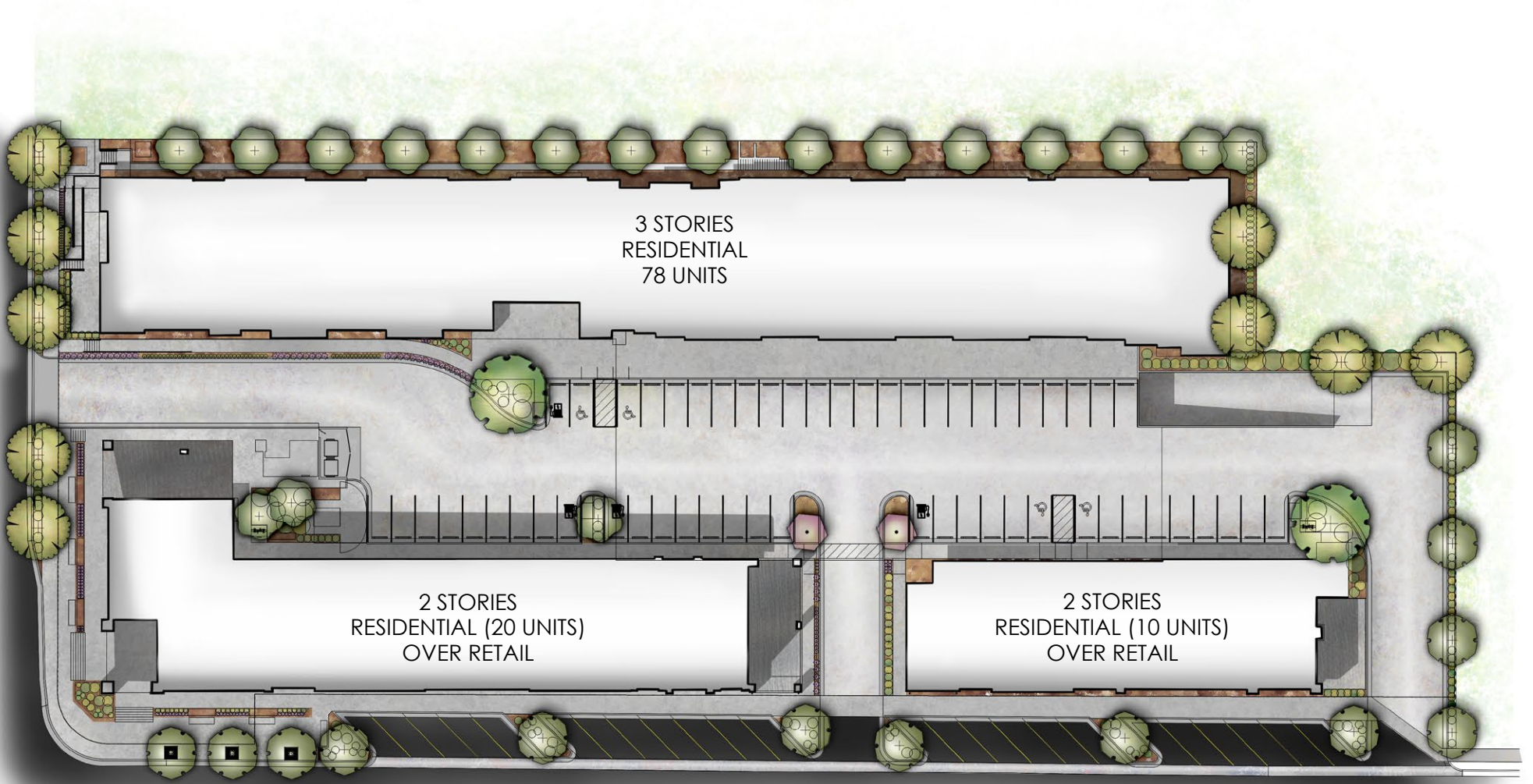
801.930.6755

[jmills@legendcommercial.com](mailto:jmills@legendcommercial.com)



# SITE PLAN

2100 SOUTH 2100 EAST  
SALT LAKE CITY, UT



TwentyOnes

**TANNER OLSON**

801.930.6752

[tolson@legendcommercial.com](mailto:tolson@legendcommercial.com)

**JOE MILLS**

801.930.6755

[jmills@legendcommercial.com](mailto:jmills@legendcommercial.com)



**ROCKWORTH**  
COMPANIES

