

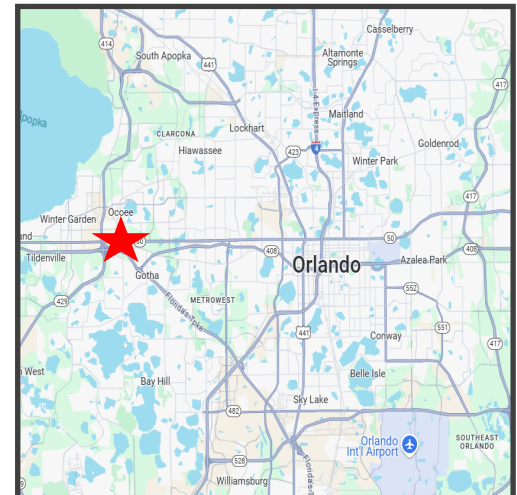
\$33,500 Monthly NNN/ 5,255 SF on 3.61 Acres



321 Hennis Rd. Winter Garden, FL 34787

Property Details:

- 5,255 SF on 3.61 AC
- **Bldg 1— 1,855 SF**
 - 100% office
 - 2 restrooms
 - Fully remodeled
- **Bldg 2— 3,400 SF total**
 - Block construction
 - 17' clear
 - 3 drive through bays
 - 2, 14'w x16'h grade doors
 - 4, 14'w x 14'h grade doors
- Fully Fenced
- City Water/Sewer
- **Zoned I-2 General Industrial**, which allows for outdoor storage.
- **Available Immediately**



CORY KROEGER
Mobile: 407.402.8581
cory@kroegercommercial.com

WILSON MCDOWELL
Mobile: 407.592.4487
wilson@park-industrial.com

KROEGER & CO.
750 Jackson Ave #104 Winter Park, FL 32789
Phone: 407.696.3088 ·
www.kroegercommercial.com

\$37,500 Monthly NNN/ 5,255 SF on 3.61 Acres

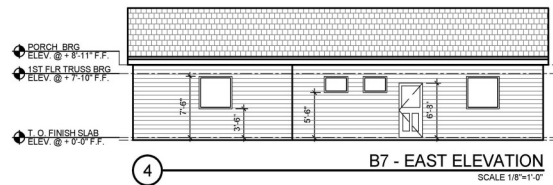
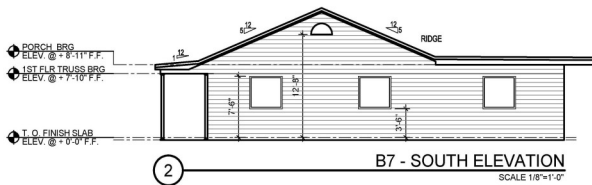
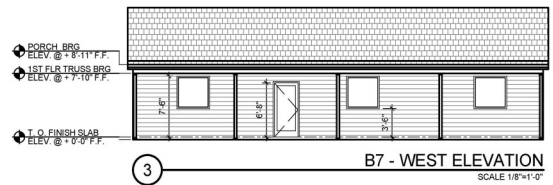
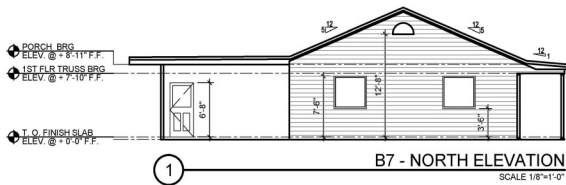
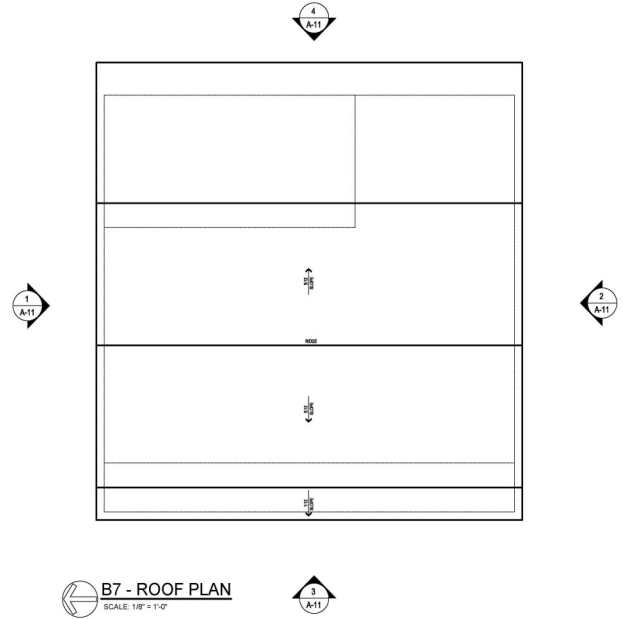
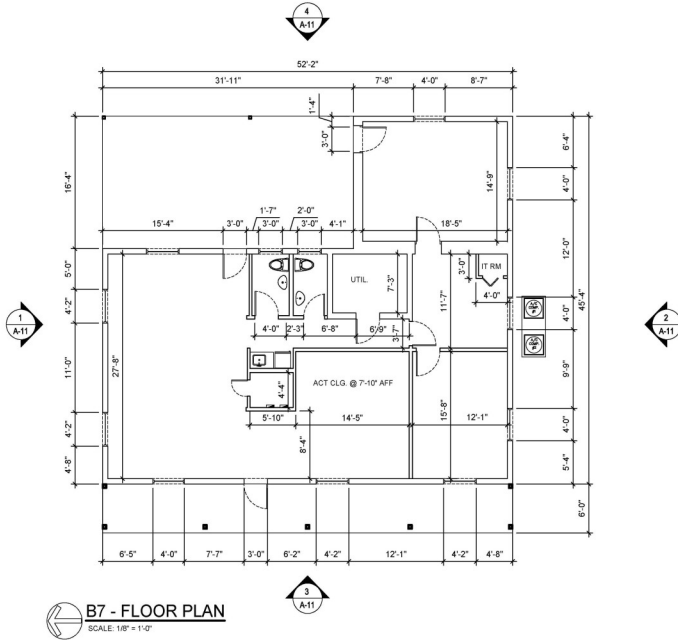


CORY KROEGER
Mobile: 407.402.8581
cory@kroegercommercial.com

WILSON MCDOWELL
Mobile: 407.592.4487
wilson@park-industrial.com

KROEGER & CO.
750 Jackson Ave #104 Winter Park, FL 32789
Phone: 407.696.3088 ·
www.kroegercommercial.com

Building #1 Floor Plan — 1,855 SF Office

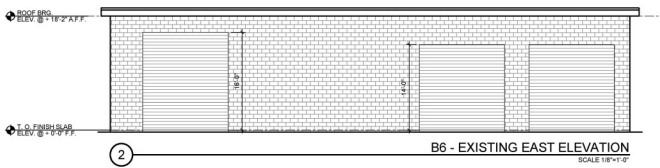
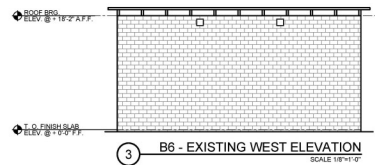
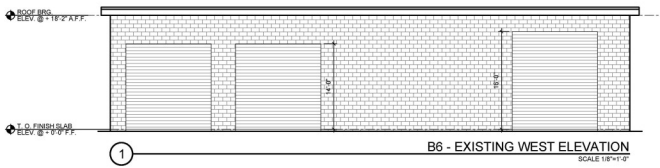
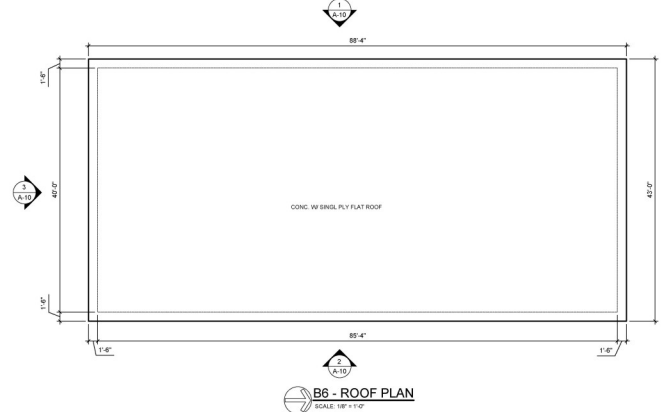
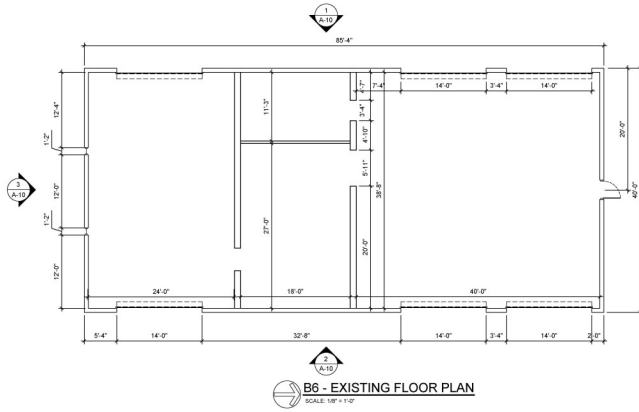


CORY KROEGER
Mobile: 407.402.8581
cory@kroegercommercial.com

WILSON MCDOWELL
Mobile: 407.592.4487
wilson@park-industrial.com

KROEGER & Co.
750 Jackson Ave #104 Winter Park, FL 32789
Phone: 407.696.3088
www.kroegercommercial.com

Building #2 Floor Plan — 3,400 SF Warehouse

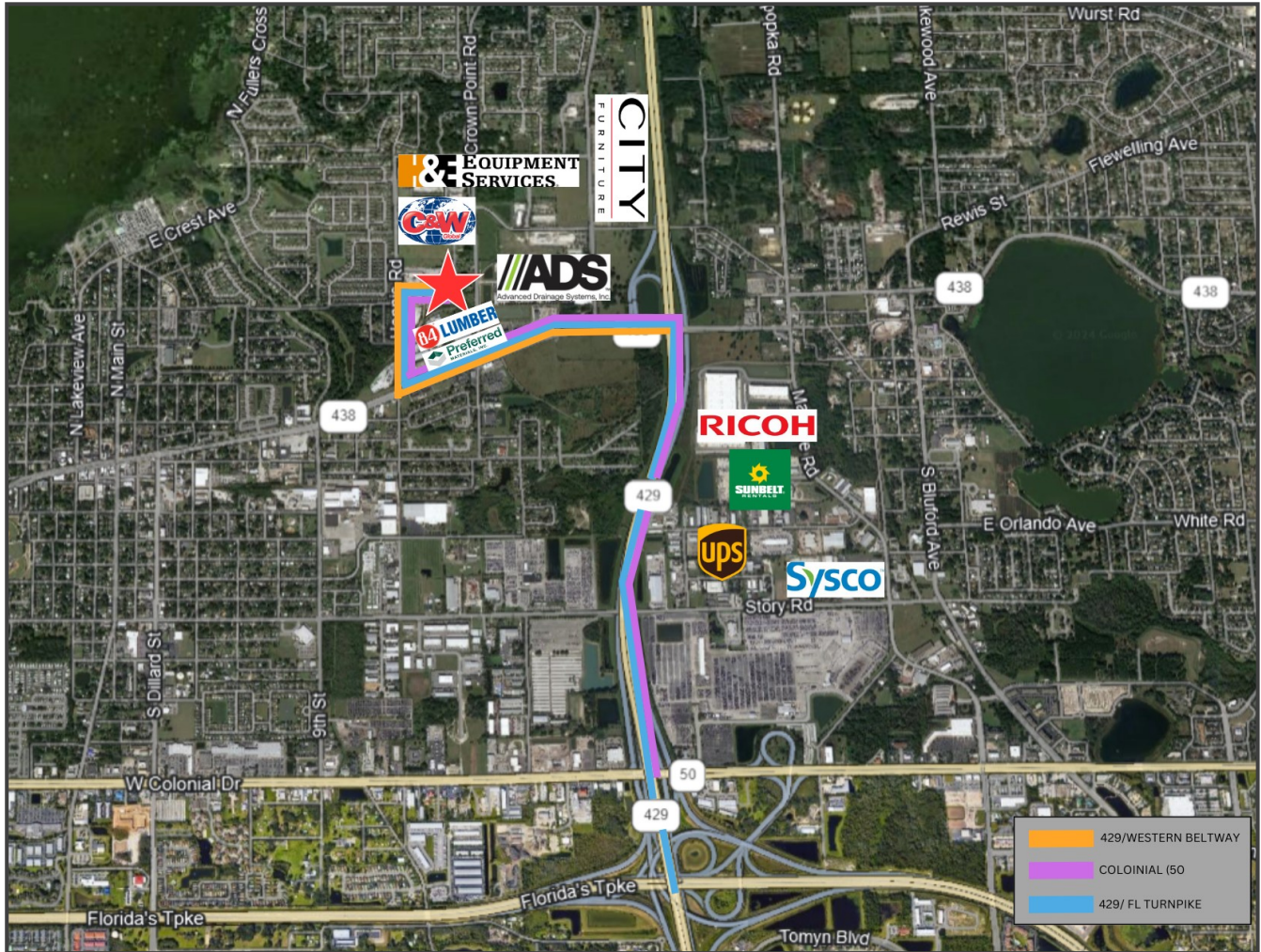


CORY KROEGER
Mobile: 407.402.8581
cory@kroegercommercial.com

WILSON MCDOWELL
Mobile: 407.592.4487
wilson@park-industrial.com

KROEGER & CO.
750 Jackson Ave #104 Winter Park, FL 32789
Phone: 407.696.3088 ·
www.kroegercommercial.com

Locator Map



ROADWAY	MILEAGE & DRIVE TIME
429/WESTERN BELTWAY	1.3 MILES LESS THAN 4 MIN
COLONIAL (50)	2 MILES LESS THAN 5 MIN
429/ FLORIDA TURNPIKE	2.7 MILES LESS THAN 7 MIN

CORY KROEGER
Mobile: 407.402.8581
cory@kroegercommercial.com

WILSON MCDOWELL
Mobile: 407.592.4487
wilson@park-industrial.com

KROEGER & Co.
750 Jackson Ave #104 Winter Park, FL 32789
Phone: 407.696.3088 ·
www.kroegercommercial.com