

FOR LEASE – RETAIL/OFFICE

1335 WEBER STREET EAST, UNIT 3

KITCHENER, ONTARIO



PROPERTY FEATURES

- 2,200 SF of end cap retail space.
- Lease Rate is \$14.00 per sq. ft.
- Est. CAM & Tax is \$9.63 per sq. ft.
- Zoning C4
- Drive up Free Parking
- Natural Gas HVAC Unit
- Pylon Sign included
- Other tenants include: Zehrs, BMO Bank of Montreal, Fit4Less, Dollarama and many others
- Immediate



CONTACT US

Mel de Oliveira**, CCIM

Vice President, Broker

519-340-2311

mel.deoliveira@cbre.com

www.cbre.com/mel.deoliveira

Nick Pecarski*

Sales Representative

519-340-2300

nick.pecarski@cbre.com

www.cbre.com/nick.pecarski

www.cbre.com

CBRE

FOR LEASE – RETAIL/OFFICE

1335 WEBER STREET EAST, UNIT 3

KITCHENER, ONTARIO

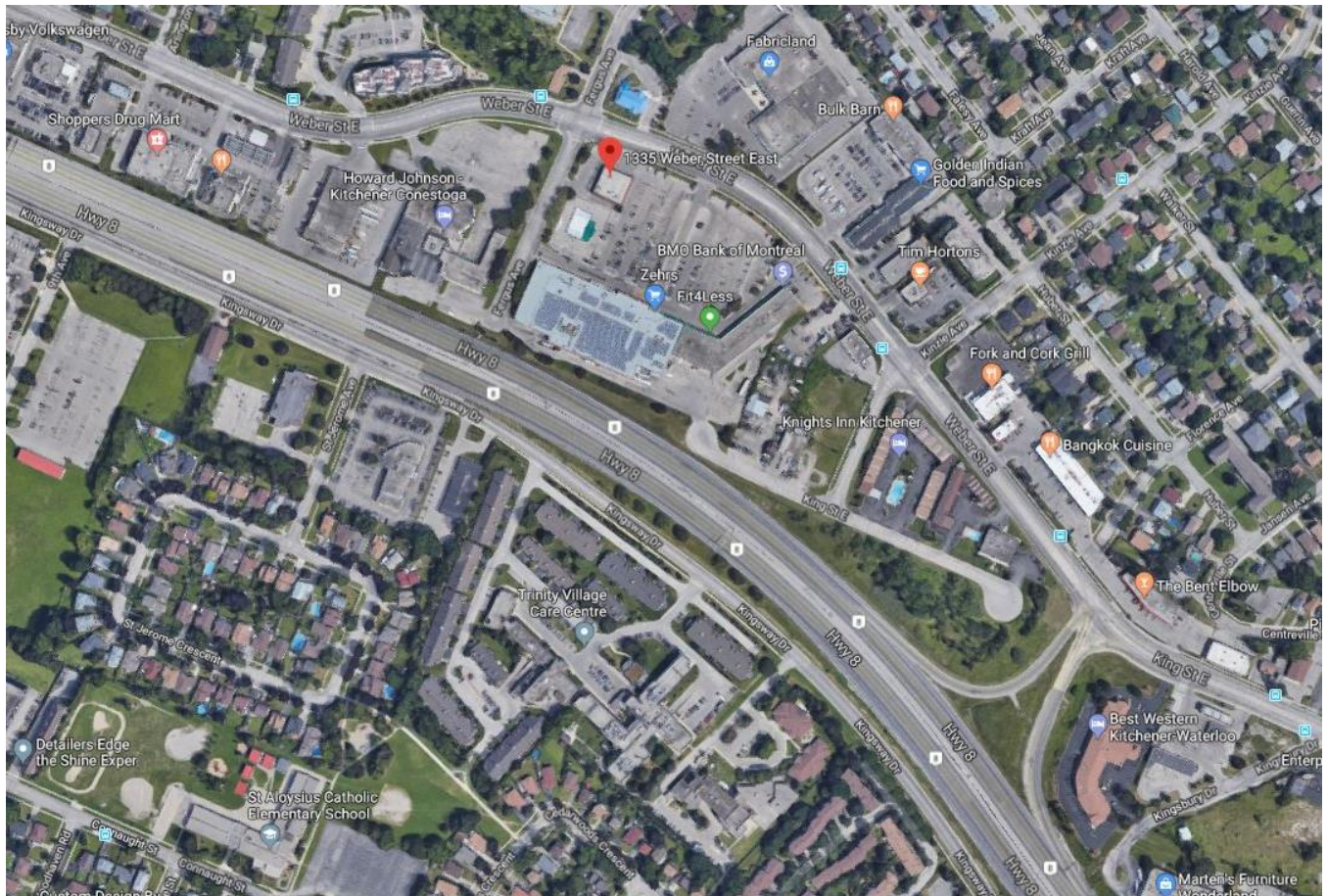


PROPERTY OVERVIEW

2,200 sq. ft. former Subway Restaurant end cap retail unit in front of grocery store anchored plaza. Located at the busy intersection of Weber Street E and Fergus Avenue in Kitchener. Join Zehrs, BMO Bank of Montreal, Dollarama, Fit4Less and others. Drive up parking in large parking lot. Zoning allows for retail, restaurant, office uses among others. Immediate possession.



AERIAL PHOTOGRAPH



© 2016 CBRE, Inc. This information has been obtained from sources believed reliable. We have not verified it and make no guarantee, warranty or representation about it. Any projections, opinions, assumptions or estimates used are for example only and do not represent the current or future performance of the property. You and your advisors should conduct a careful, independent investigation of the property to determine to your satisfaction the suitability of the property for your needs.

Photos herein are the property of their respective owners and use of these images without the express written consent of the owner is prohibited.