

Warehouse For Sale

\$399,0000

Revelli Building

5230 E 12 th St.

Oakland, CA 94601

YOUR NAME HERE

YOUR NAME  
HERE

**CENTURY 21  
COMMERCIAL®**

**Epic**

**Daniel Rogers**

DRE#02051470

[daniel.rogers@c@!epic.com](mailto:daniel.rogers@c@!epic.com)



# THE OFFERING

Flexible Industrial Property with Live/Work Potential –

5230 E 12th St, Oakland, CA | 1,550 SF | HBX-2

Versatile and full of potential, this +/-1,550 SF single-story warehouse offers a rare opportunity for owner-users, tradespeople, and creative entrepreneurs seeking a functional space in Oakland's HBX-2 zoning district.



**Property Type**  
**Flex/Warehouse/Creative Space**

**Building Size**  
**+/-1,550 sqft**

**Lot Size**  
**+/- 1570 sqft**

**HBX-2 Zoning**  
**Located in Opportunity Zone**

**Asking Price**  
**\$399,000**



**COMMERCIAL®**

# SUMMARY



**Mixed-Use Functionality:** Includes two private offices, a full kitchen, and a large bathroom with shower — ideal for businesses needing workspace with on-site amenities.



**Open Workshop:** Large open area with roll-up door — spacious enough to park vehicles indoors or support a wide range of fabrication, storage, or production uses.

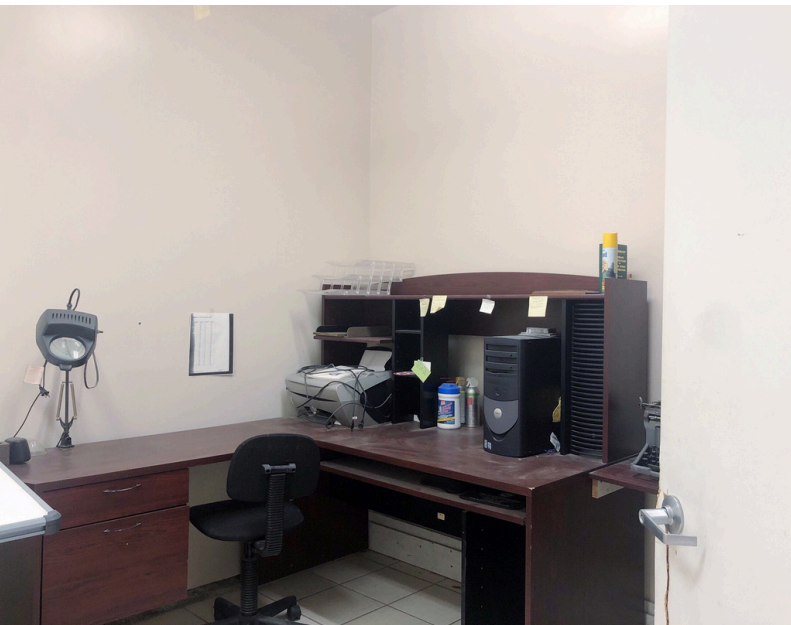
**Live/Work Possibility:** Located in the HBX-2 zone, which supports Joint Living and Working Quarters (JLWQ) subject to City of Oakland approval — allowing the potential for residential use integrated with business activity.



**COMMERCIAL®**

# PHOTOS







AERIAL ANNOTATION MAP



5230

5230 E 12th St Oakland, CA 94601



C21 Commercial  
6580 Oakmont Dr, Santa Rosa CA 95409  
510-734-5327  
License: 02051470  
daniel.rogers@c21epic.com

**Thank You**



**Daniel Rogers**

DRE#02051470

---

**510.734.5327**

**daniel.rogers@c21epic.com**  
**danielrogersrealestate.com**

**CENTURY 21**  
**COMMERCIAL<sup>®</sup>**

**Epic**