

AVAILABLE FOR LEASE

SEC GREENWAY HAYDEN LOOP AND 78TH ST

15757 N 78TH ST | SCOTTSDALE, ARIZONA | 85260



LAST SPACE AVAILABLE!



👉 TAKE A TOUR!

FEATURES

- Approximately 24,300 SF
- Flex-Industrial Building
- Suite A: Leased
- **Suite B: 12,734 SF**
- **Suite C: 6,051 SF (Available Oct. 2026)**
- 100% A/C
- Grade Level & Truckwell Loading
- Two (2) 14'x14' Roll-Up Doors
- **Very High-End Interior Finishing**
- 90% of Upscale Furnishings Included
- Parcel Size: 1.74 Acres (75,995 SF)
- APN: 215-47-080
- Zoning I-1
- Year Built: 2001
- Parking Ratio: ±3/1,000 SF
- **Lease Rate: \$1.85 NNN/SF/MO.**



Mark Linsalata, SIOR
mlinsalata@leearizona.com
D 602.912.3539
C 602.570.3226

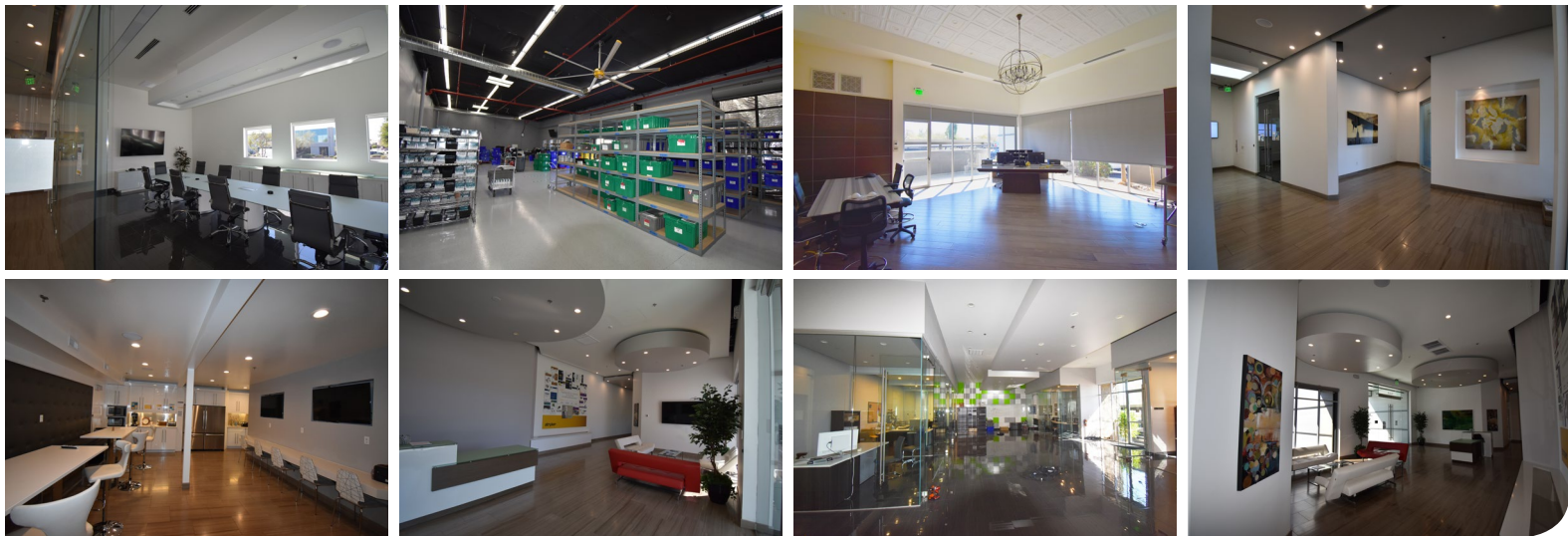
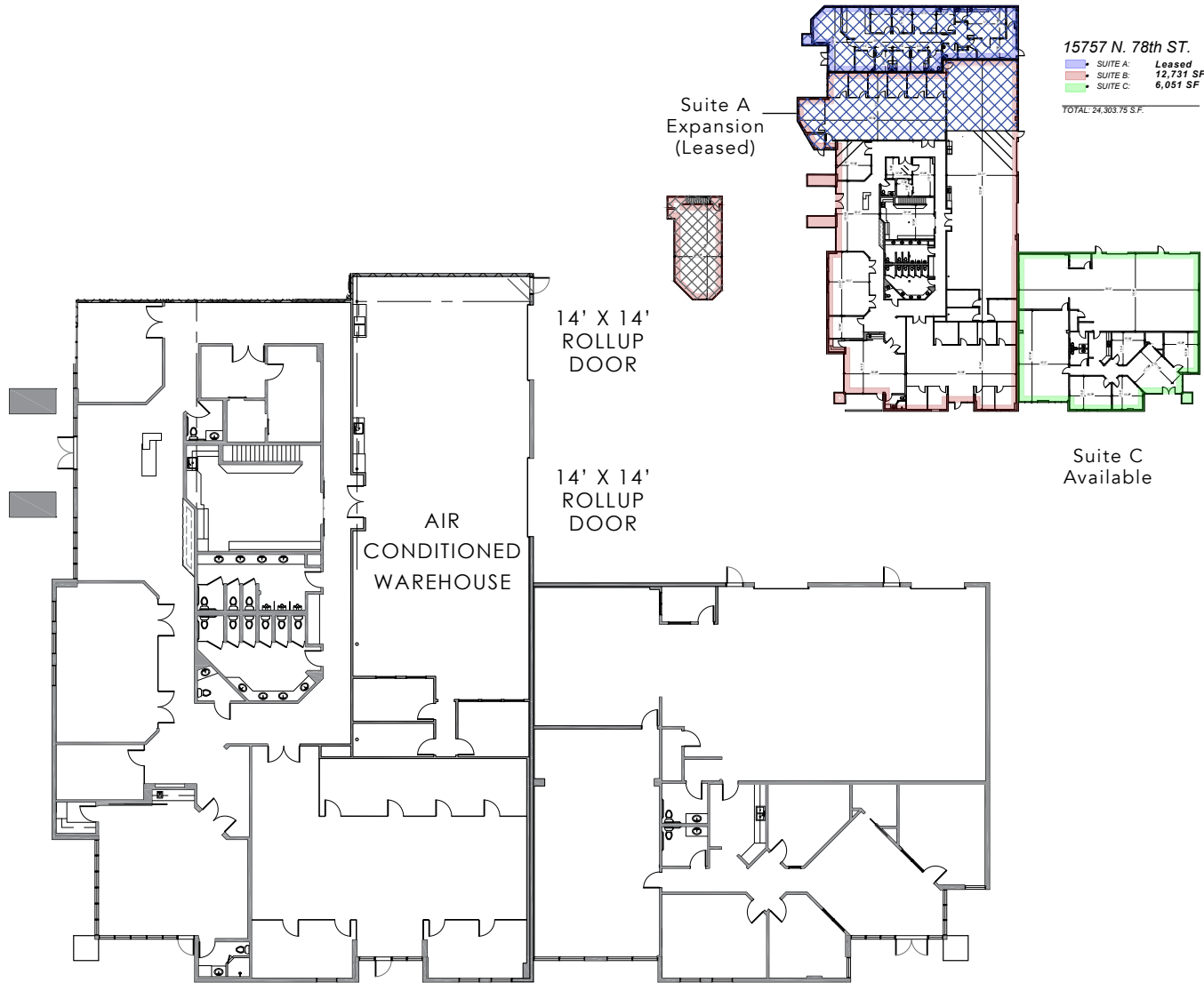


Nic Linsalata
nlinsalata@leearizona.com
D 602.474.9510
C 480.276.1960

All information furnished regarding property for sale, rental or financing is from sources deemed reliable, but no warranty or representation is made to the accuracy thereof and same is submitted to errors, omissions, change of price, rental or other conditions prior to sale, lease or financing or withdrawal without notice. No liability of any kind is to be imposed on the broker herein.

AVAILABLE FOR LEASE SEC GREENWAY HAYDEN LOOP AND 78TH ST

15757 N 78TH ST | SCOTTSDALE, ARIZONA | 85260



AVAILABLE FOR LEASE
SEC GREENWAY HAYDEN LOOP AND 78TH ST

15757 N 78TH ST | SCOTTSDALE, ARIZONA | 85260

