

Berkeley Crossing II

663 & 665 Springfield Avenue
Berkeley Heights, New Jersey
Union County 07922

PROPERTY DESCRIPTION

Traditionally designed brand-new mixed-use development situated on Springfield Avenue (CR 512) along the primary east west corridor between New Providence and Berkeley Heights. The three-level redevelopment consists of 53 apartments and 4,800 sf of prime ground level retail/professional space, which currently has leases executed with Gamechanger Fitness and The Coder School.

AVAILABLE SPACE

2,110 SF

RENTAL RATES

Upon request, subject to use and creditworthiness

CAM & REAL ESTATE TAXES

+/- \$6.93 psf NNN projected 2026

OCCUPANCY

Immediate

PARKING

64 on-site parking spaces

TRAFFIC COUNTS

ADT 7,548 CR 512 (Springfield Ave)

ZONING

Housing Business Zones (HB-3) allows for retail sales of goods and services and professional office users.



FOR ADDITIONAL INFORMATION CONTACT EXCLUSIVE LEASING AGENT

Christian Harrington

Leasing Associate

908.604.6900 x 119

charrington@silbertrealestate.com

SILBERT

REALTY & MANAGEMENT COMPANY, INC.

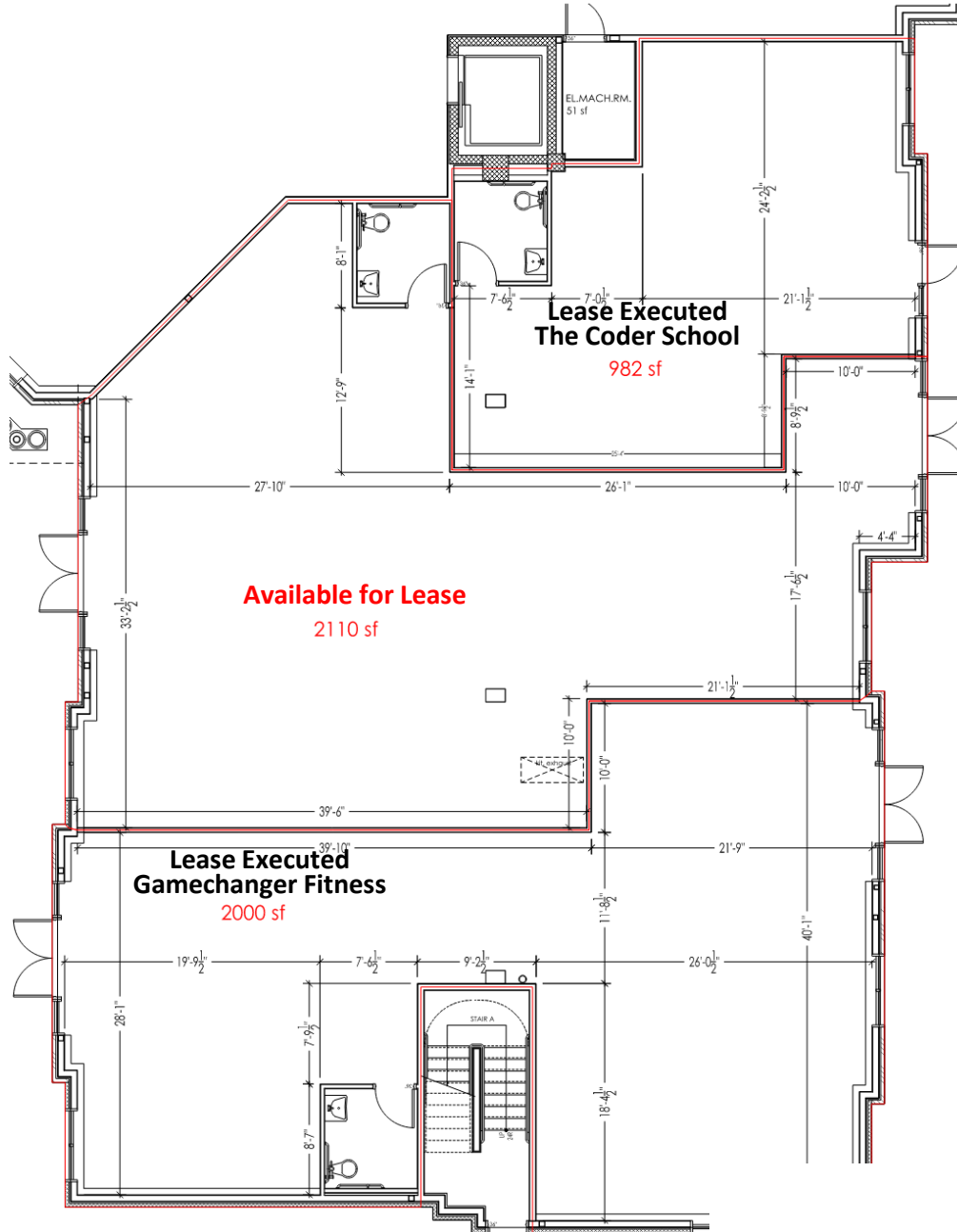
152 Liberty Corner Road
Suite 203
Warren, NJ 07059

No warranty or representation, express or implied, is made to the accuracy or completeness of the information contained herein and same is submitted subject to errors, omissions, change of price, rental or other conditions, withdrawal without notice, and to any special listing conditions imposed by the property owner. As applicable, Silbert Realty & Management make no representation as to the condition of the property (or properties marketed) in question.



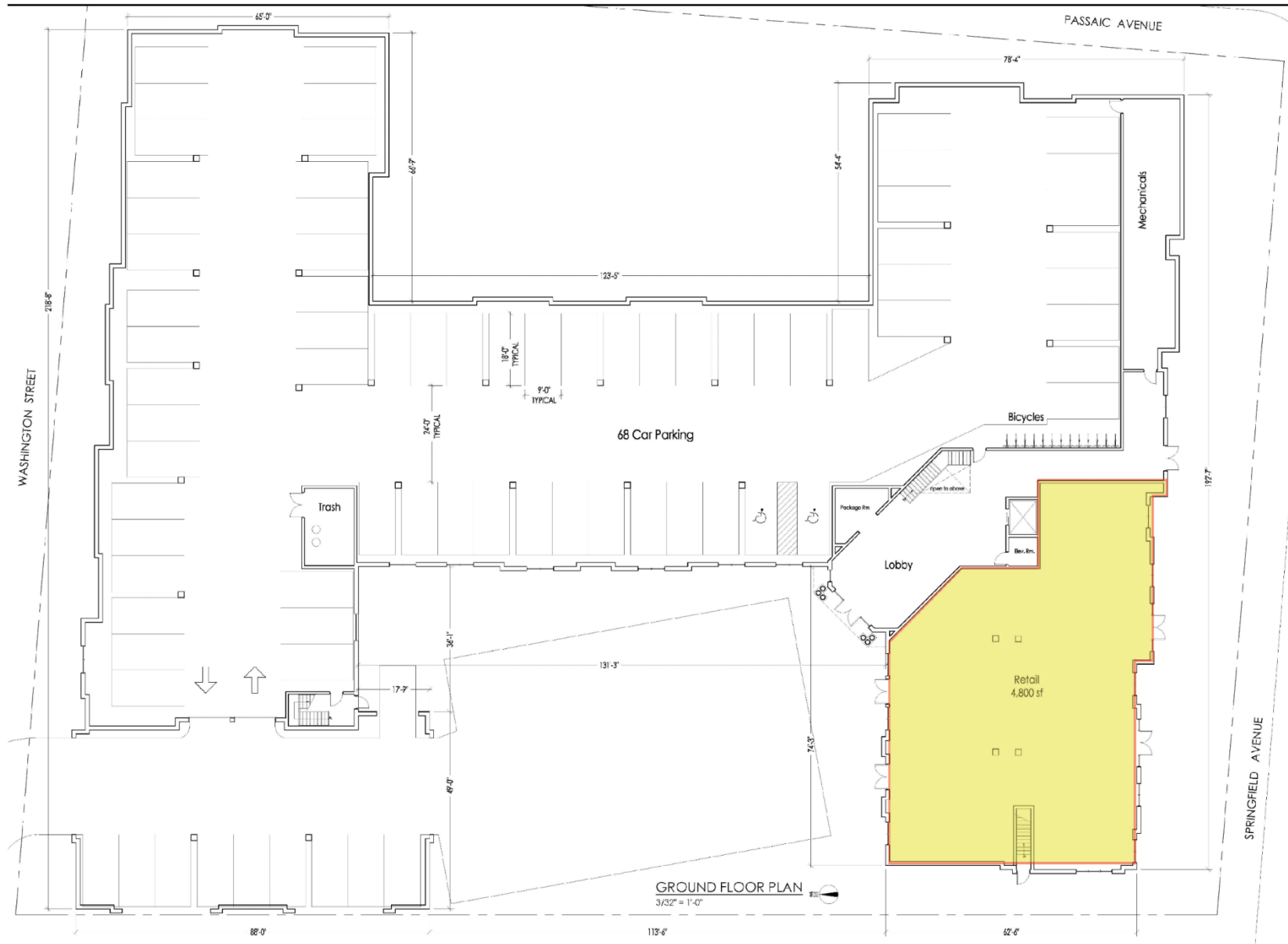
Visit Our Website: WWW.SilbertRealEstate.com

Floor Plan



Berkeley Crossing II, Berkeley Height, NJ

Site Plan



1,2 & 3 Mile Aerial



AREA DEMOGRAPHICS

2 Mile Radius

Population	19,654
Average HH Income	\$196,956
Median HH Income	\$240,393
Total Households	5,869
Median Age	42.0
Daytime Population	12,132

3 Mile Radius

Population	35,829
Average HH Income	\$221,787
Median HH Income	\$179,508
Total Households	18,738
Median Age	43.0
Daytime Population	40,644

5 Mile Radius

Population	159,279
Average HH Income	\$190,544
Median HH Income	\$142,811
Total Households	69,005
Median Age	39.9
Daytime Population	107,750

