



270 E. 167th Street Harvey, IL

- Building Size: 25,000 SF
- Office Size: 2,300 SF (1,150 SF per floor)
- Site Size: 1.93 Acres
- Ceiling Height: 22' clear
- Loading: 4 interior docks, 3 oversized drive-in doors
- Car Parking: 39+ spaces
- Electrical: 400 amps @ 240 volts
- Column Spacing: 34' x 31'
- Real Estate Taxes: \$49,788 (2024 payable 2025)
- Minutes from I-294 and major expressways
- LED lighting
- Fully sprinklered
- Renovated offices
- Fenced Outside Storage / Trailer Parking
- Sale Price: Subject to Offer
- Lease Rate: Subject to Offer

FOR SALE OR LEASE

25,000 SF

Contact us:

Brendan Green

Senior Vice President

+1 847 698 8227

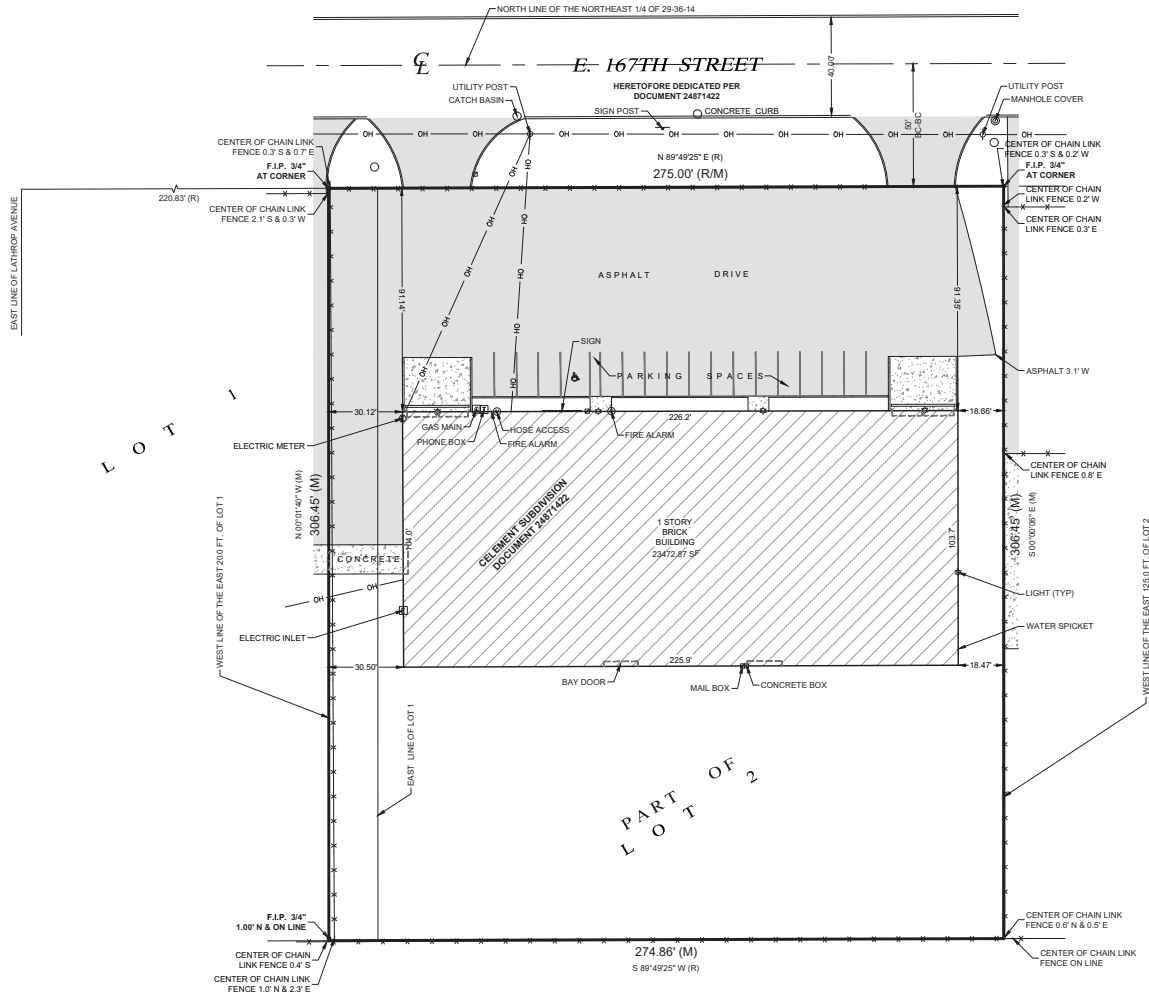
brendan.green@colliers.com

Colliers

6250 N. River Rd., Suite 11-100

Rosemont, IL 60018

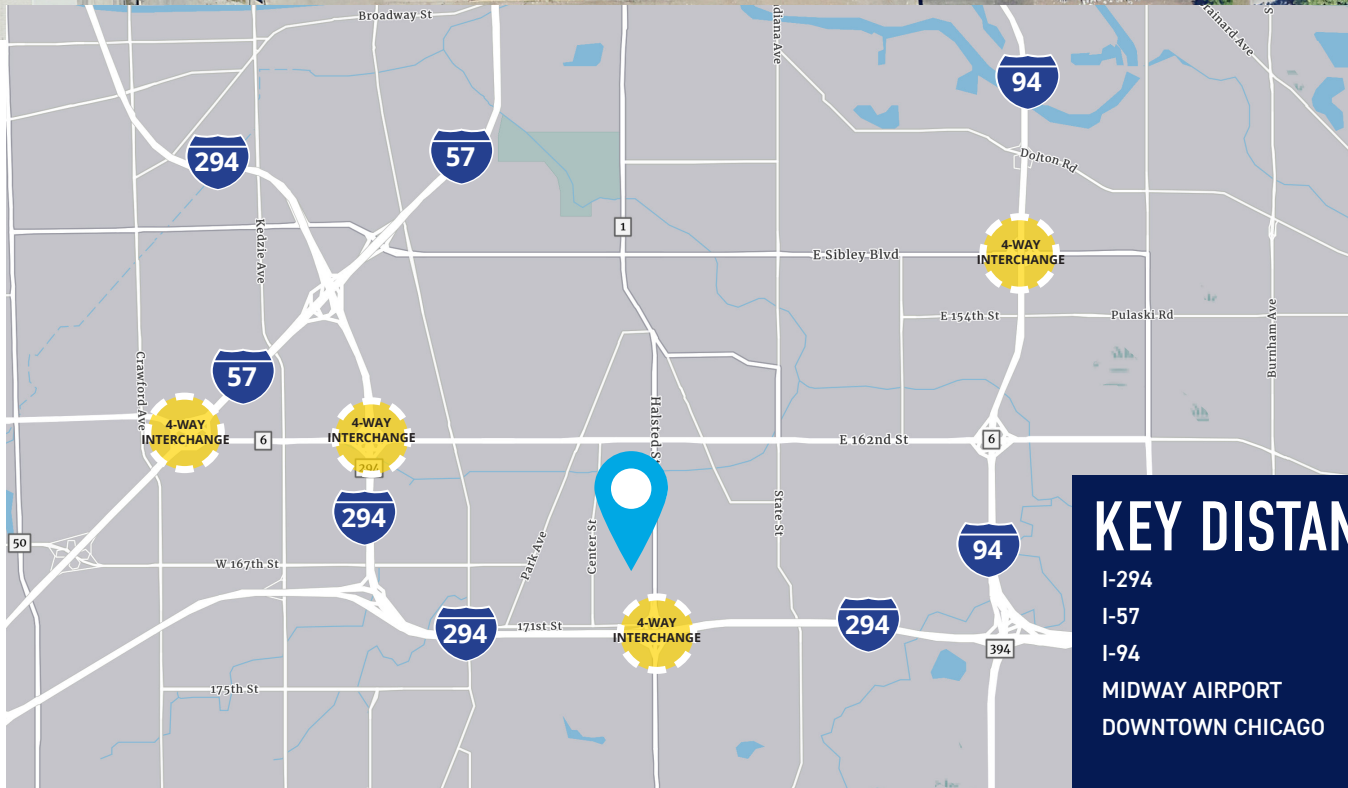
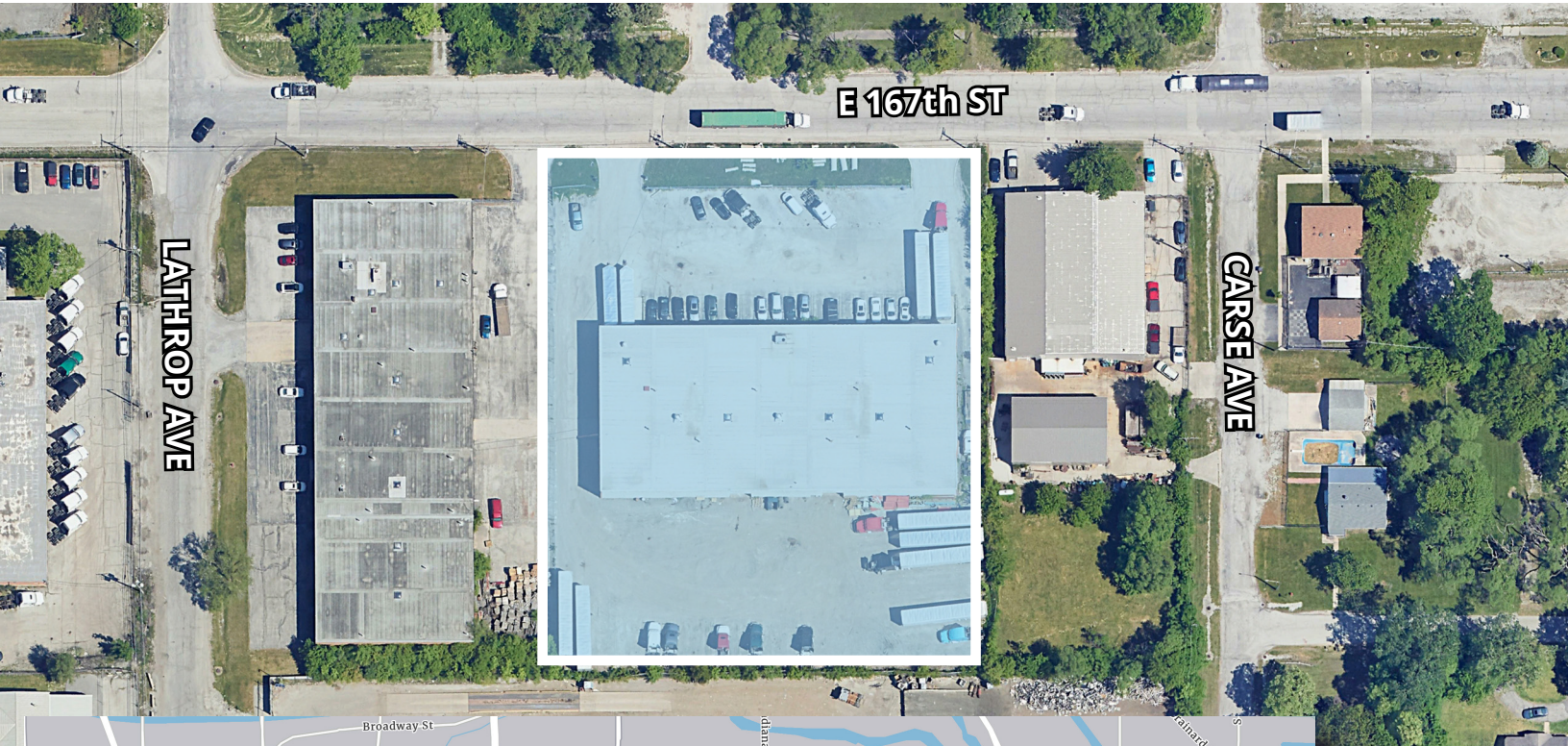
Survey



Brendan Green
 Senior Vice President
 +1 847 698 8227
 brendan.green@colliers.com



Location



KEY DISTANCES

I-294	2 miles
I-57	2 miles
I-94	3 miles
MIDWAY AIRPORT	18 miles
DOWNTOWN CHICAGO	23 Miles

Brendan Green
Senior Vice President
+1 847 698 8227
brendan.green@colliers.com



Interior Photos



Brendan Green
Senior Vice President
+1 847 698 8227
brendan.green@colliers.com

