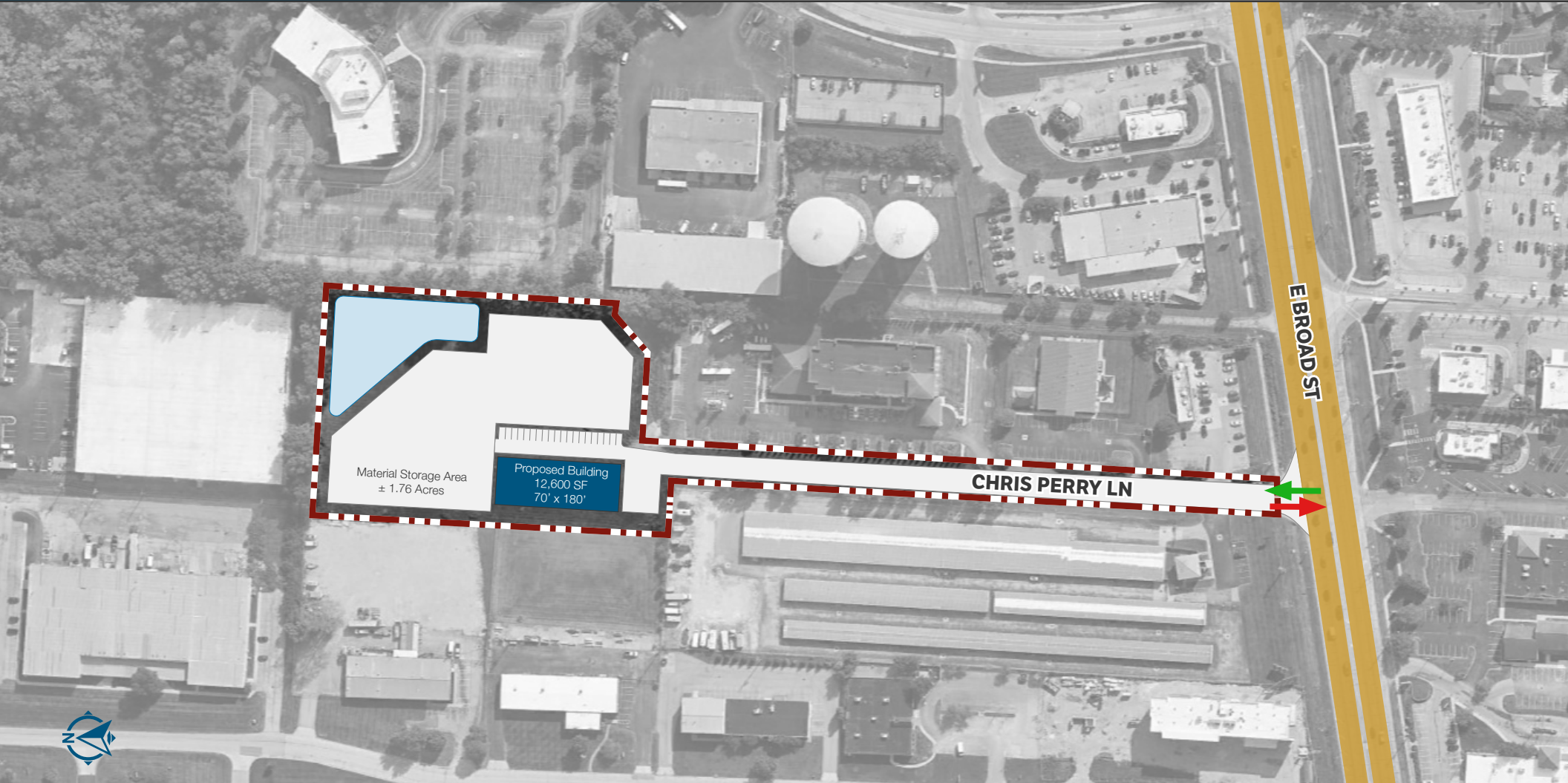


STEEL COLUMBUS IOS

150 CHRIS PERRY LN, COLUMBUS, OH 43213

FOR LEASE

±12,600 SF Warehouse with ±1.76 Acres of Outdoor Storage



JOE MENNINGER, CCIM

Vice President
NAI Ohio Equities
jmenninger@ohioequities.com
(614) 629-5262

HAILEIGH STANTON

Vice President
NAI Ohio Equities
hstanton@ohioequities.com
(614) 629-5266

MATT HUBERT

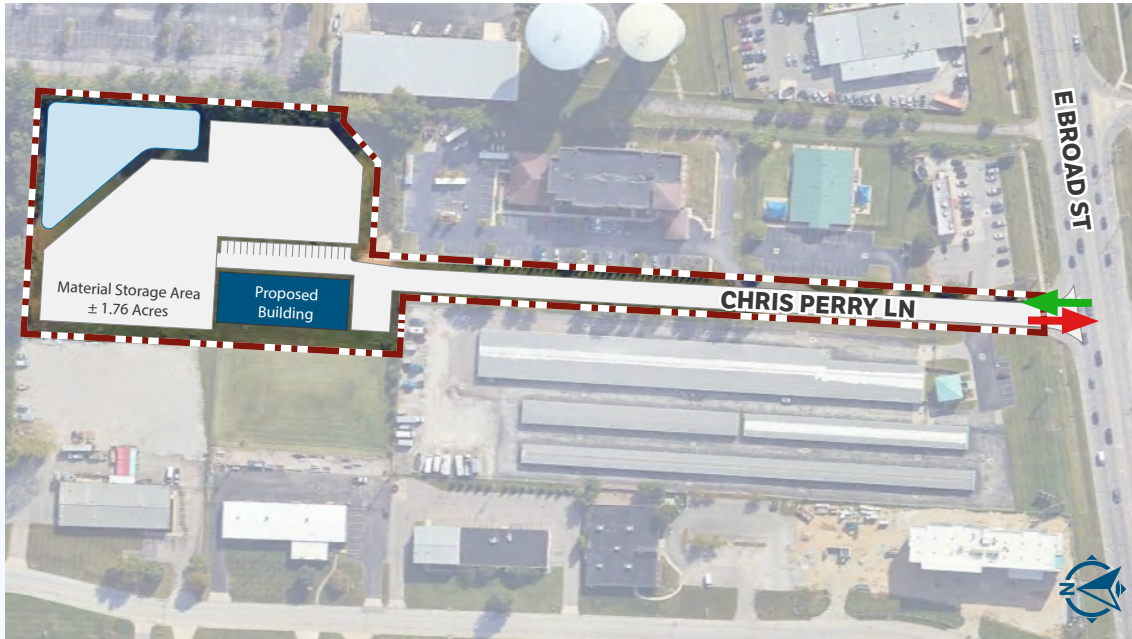
Executive Vice President | Investments
Blue Steel Development
mhubert@bluesteeldev.com
(773) 619-0554



PROPERTY OVERVIEW



5-Acre Industrial Site with Flexible Site Planning and Ample Yard Space



±12,600 SF
BUILDING SIZE



±1.76 Acres
OUTDOOR STORAGE

HIGHLIGHTS

- 5-Acre Industrial Site
- Prime Site for Custom Industrial Development with Yard Space
- Utilities Available in the Immediate Area
- Located Just off the East Broad Street Industrial Corridor
- Minutes to I-270 and 8 Miles to John Glenn International Airport
- Surrounded by Established Industrial Developments
- Positioned within a High-Growth East Columbus Industrial Submarket

LOCATION

Address	150 Chris Perry Ln, Columbus, OH 43213
Submarket/County	East Columbus / Franklin

BUILDING & SITE

Building Size	±12,600 SF
Dimensions	70' x 180'
Yard Area	±1.76 Acres
Electric	AEP Ohio
Gas	Columbia Gas
Water	Columbus Division of Water, Sewage, and Drainage

ZONING & USE

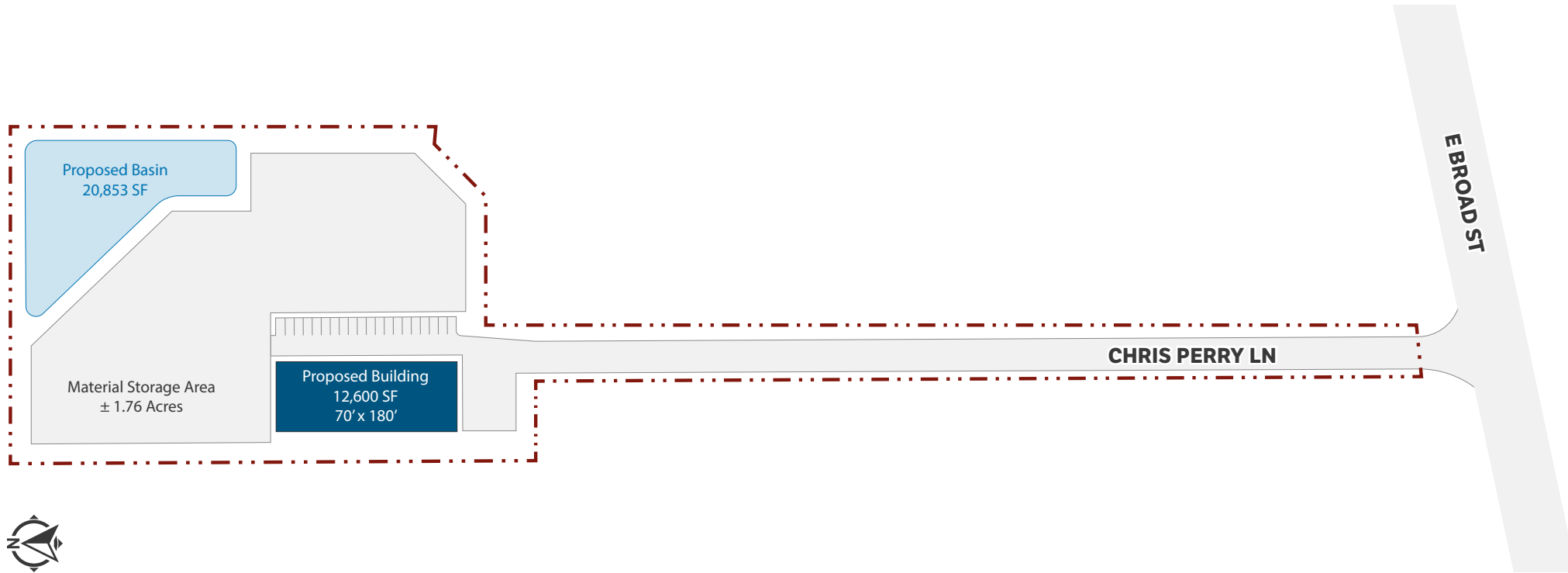
Zoning	LM
Permitted Uses	Truck Terminals, Warehouse/ Distribution, Fleet Operations; Flexible Site Planning

AVAILABILITY

Date Available	Immediately
Lease Terms	Contact Broker for Details

PROPOSED SITE PLAN | OPTION 1

150 Chris Perry Ln, Columbus, OH 43213



JOE MENNINGER, CCIM

Vice President
NAI Ohio Equities
jmenninger@ohioequities.com

HAILEIGH STANTON

Associate
NAI Ohio Equities
hstanton@ohioequities.com

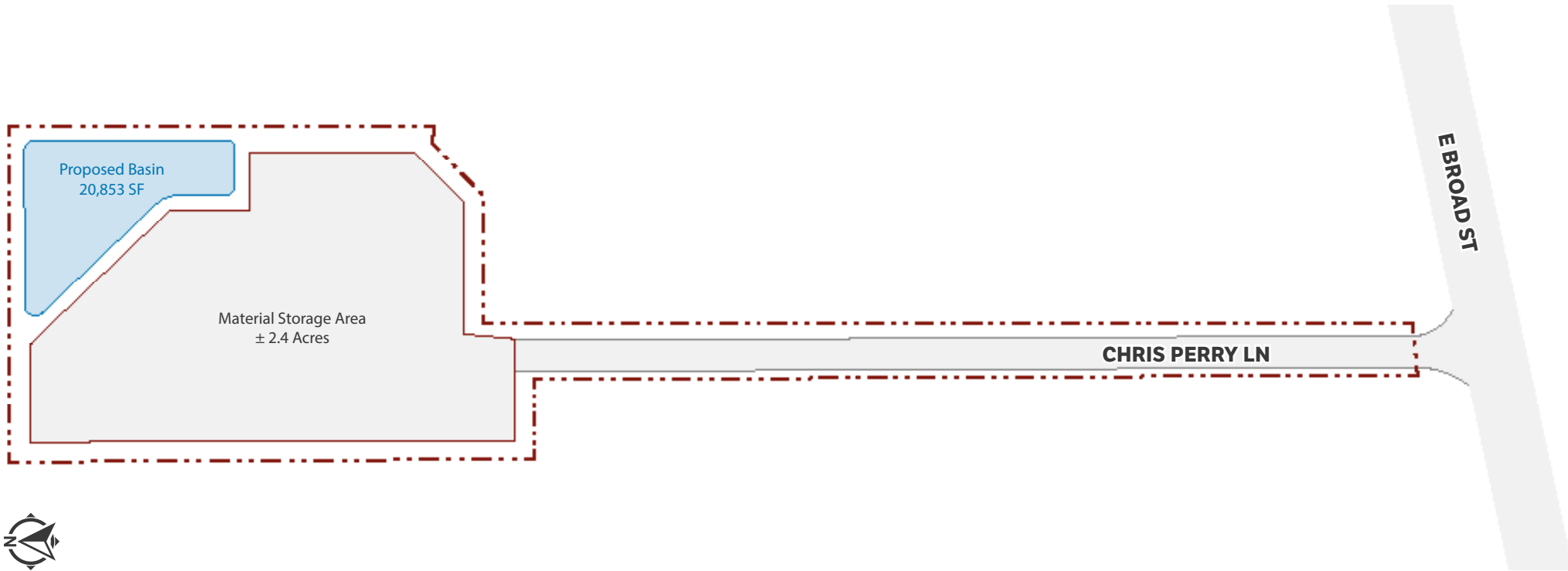
MATT HUBERT

Executive Vice President | Investments
Blue Steel Development
mhubert@bluesteeldev.com



PROPOSED SITE PLAN | OPTION 2

150 Chris Perry Ln, Columbus, OH 43213



MATT HUBERT

Executive Vice President | Investments
Blue Steel Development
mhubert@bluesteeldev.com

HAILEIGH STANTON

Associate
NAI Ohio Equities
hstanton@ohioequities.com

JOE MENNINGER, CCIM

Vice President
NAI Ohio Equities
jmenninger@ohioequities.com



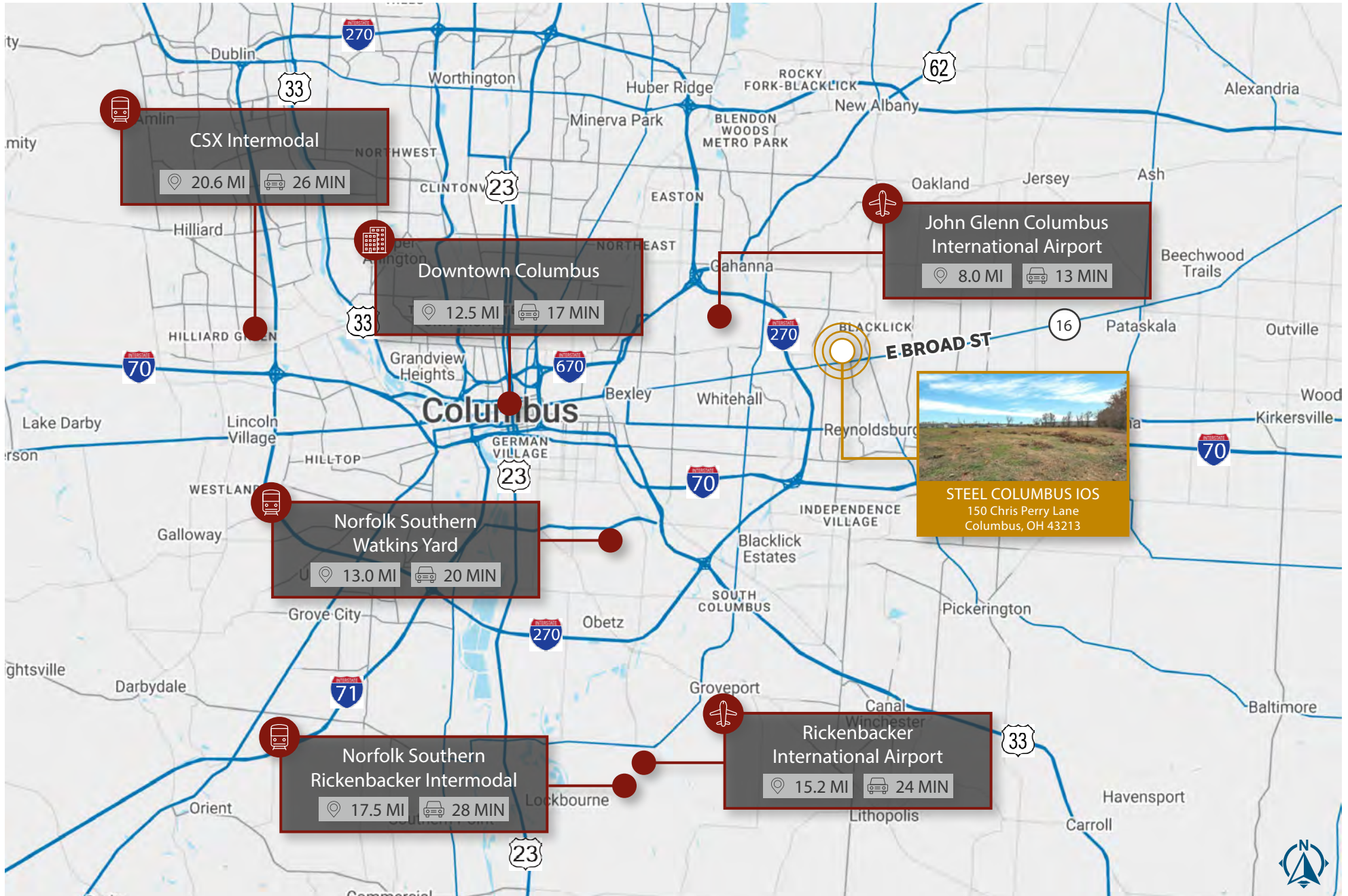
LOCATION OVERVIEW



Strategically located just off the East Broad Street industrial corridor, this site offers exceptional access to I-270 and is only minutes from John Glenn International Airport, providing seamless connectivity to major transportation and distribution networks. Situated within the rapidly expanding East Columbus industrial submarket, the property is surrounded by established industrial development and benefits from nearby utility access. With ample yard potential, flexible site planning opportunities, and a prime regional location, this parcel is well suited for a wide range of industrial development and build-to-suit uses.



REGIONAL CONNECTIVITY



For more information, please contact:

JOE MENNINGER, CCIM

Vice President
NAI Ohio Equities
jmenninger@ohioequities.com
(614) 629-5262

HAILEIGH STANTON

Associate
NAI Ohio Equities
hstanton@ohioequities.com
(614) 629-5266

MATT HUBERT

Executive Vice President | Investments
Blue Steel Development
mhubert@blusteeldev.com
(773) 619-0554



This document has been prepared by Blue Steel Development for marketing and general informational purposes only. While the information contained herein is believed to be accurate, Blue Steel Development makes no representations or warranties, express or implied, as to its completeness, accuracy, or reliability. Prospective parties are encouraged to conduct their own independent investigations and due diligence regarding the information presented. Blue Steel Development excludes unequivocally all inferred or implied terms, conditions and warranties arising out of this document and excludes all liability for loss and damages arising there from. This publication is the copyrighted property of Blue Steel Development and/or its licensors. © 2026. All rights reserved. Blue Steel Development, LLC is registered with the U.S. Patent and Trademark Office.