

OFFICE SPACE FOR LEASE

# 455 SHERMAN STREET

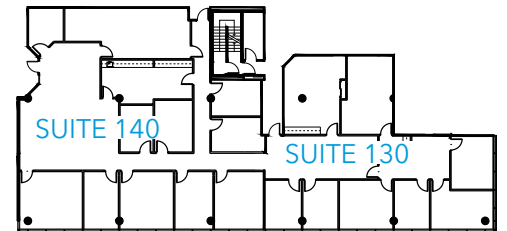
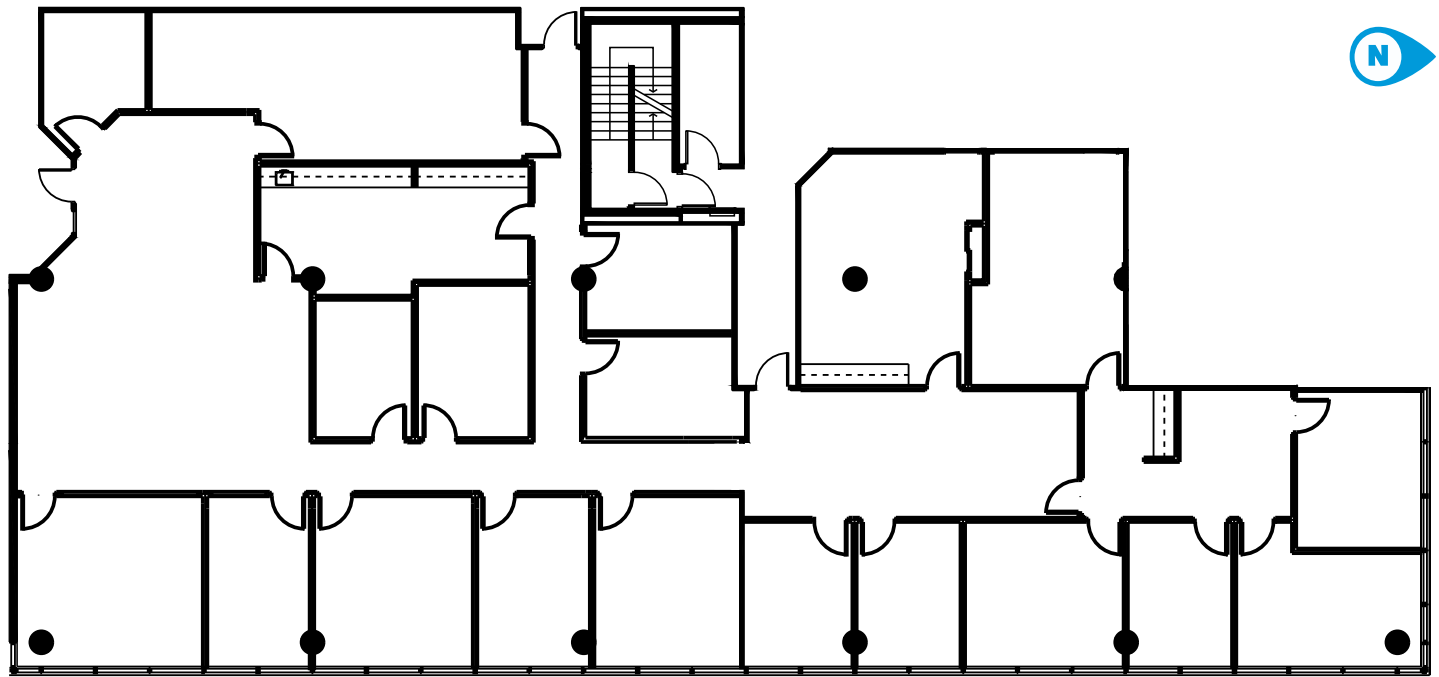
DENVER, COLORADO 80203

SUITE 130 & 140

±7,102 RSF

CONTIGUOUS SPACE

AVAILABLE WITH  
60 DAYS NOTICE



SUITE	SIZE	LAYOUT	AVAILABILITY
130 & 140	±7,102 RSF	16 offices (11 exterior) 2 conference rooms, reception/lobby area, kitchen/break room, access to restrooms, elevator and stairs	Available With 60 Days Notice

**JR BITZER**

303 501 8778

jrbitzer@lee-associates.com