

FOR LEASE

OFFICE/WAREHOUSE/ RETAIL BUILDING

3113 MIDDLEFIELD RD
REDWOOD CITY, CA



*±3,120 SF office/warehouse/retail space for
lease, centrally located in Redwood City*

Building size: ±3,120 SF

Lot size: ±6,098 SF

±1,715 SF first floor and ±1,405 SF second floor

Good combination of office and warehouse

Outdoor storage area

Two grade level doors

BRETT WEBER

650.771.3000

brett.weber@kidder.com

LIC N° 00901454

JOHN MCLELLAN

415.418.9880

john.mclellan@kidder.com

LIC N° 01869489

DREW RAMIREZ

650.430.1433

drew.ramirez@kidder.com

LIC N° 02209477

KIDDER.COM

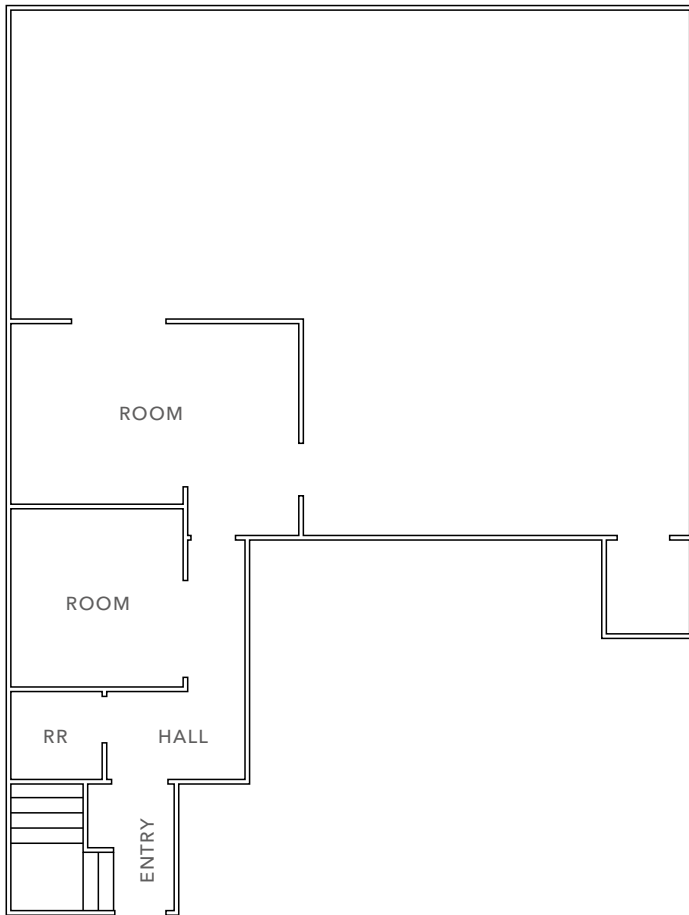
This information supplied herein is from sources we deem reliable. It is provided without any representation, warranty, or guarantee, expressed or implied as to its accuracy. Prospective Buyer or Tenant should conduct an independent investigation and verification of all matters deemed to be material, including, but not limited to, statements of income and expenses. Consult your attorney, accountant, or other professional advisor.

km Kidder
Mathews

1ST FLOOR

±1,715 SF

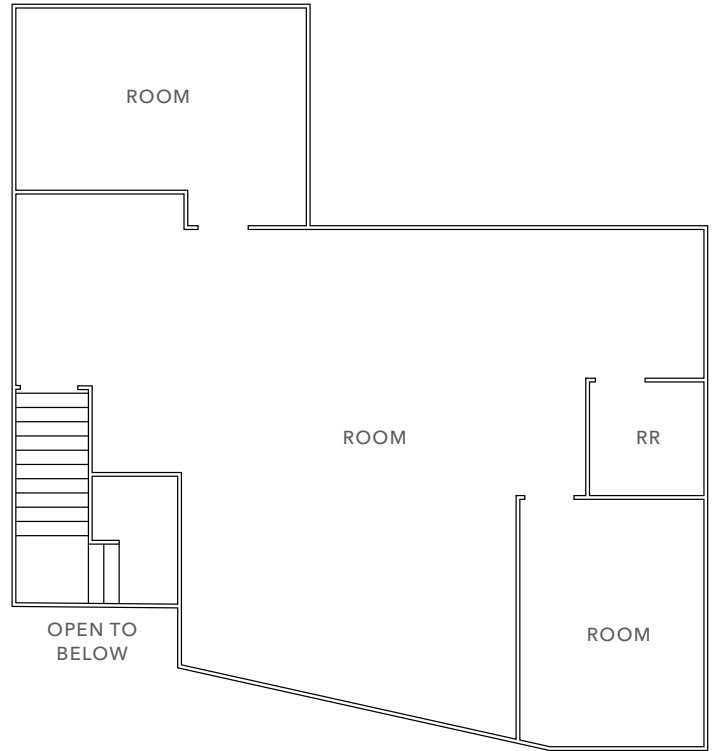
AVAILABLE



2ND FLOOR

±1,405 SF

AVAILABLE



FLOOR PLAN NOT TO SCALE

BRETT WEBER
650.771.3000
brett.weber@kidder.com
LIC N° 00901454

JOHN MCLELLAN
415.418.9880
john.mclellan@kidder.com
LIC N° 01869489

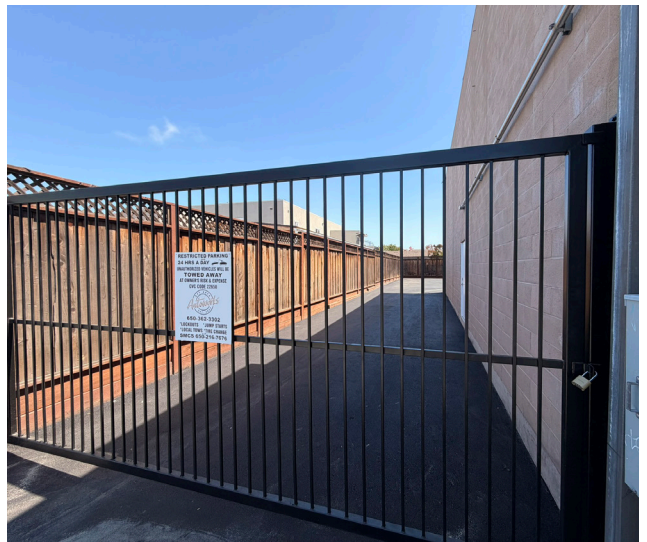
DREW RAMIREZ
650.430.1433
drew.ramirez@kidder.com
LIC N° 02209477

±3,120 SF
TOTAL SF AVAILABLE

KIDDER.COM

This information supplied herein is from sources we deem reliable. It is provided without any representation, warranty, or guarantee, expressed or implied as to its accuracy. Prospective Buyer or Tenant should conduct an independent investigation and verification of all matters deemed to be material, including, but not limited to, statements of income and expenses. Consult your attorney, accountant, or other professional advisor.

km Kidder Mathews



KIDDER.COM

This information supplied herein is from sources we deem reliable. It is provided without any representation, warranty, or guarantee, expressed or implied as to its accuracy. Prospective Buyer or Tenant should conduct an independent investigation and verification of all matters deemed to be material, including, but not limited to, statements of income and expenses. Consult your attorney, accountant, or other professional advisor.



BRETT WEBER 650.771.3000 | brett.weber@kidder.com | LIC N° 00901454

JOHN MCLELLAN 415.418.9880 | john.mclellan@kidder.com | LIC N° 01869489

DREW RAMIREZ 650.430.1433 | drew.ramirez@kidder.com | LIC N° 02209477

KIDDER.COM

This information supplied herein is from sources we deem reliable. It is provided without any representation, warranty, or guarantee, expressed or implied as to its accuracy. Prospective Buyer or Tenant should conduct an independent investigation and verification of all matters deemed to be material, including, but not limited to, statements of income and expenses. Consult your attorney, accountant, or other professional advisor.

