

Satsop

Business Park

A FACILITY OF THE  PORT OF GRAYS HARBOR



TURBINE BUILDING

300,000 SF Industrial/Manufacturing Space suited for heavy manufacturing, including tank construction, aerospace and large component construction for industrial and energy projects.

- Building Type: WGEF Class A
- Wall Construction: Varies between concrete, steel and wood framing
- Roof Construction: Q-decking with insulating layer and multi-part overlay
- Ground floor: Concrete
- Intermediate floors: Concrete
- Column Spacing: 25 ft.
- Top floor has (2) 250 ton cranes
- Bottom floor has (9) cranes ranging from 5-10 tons
- 10 acres of laydown/storage
- Roof Construction: 200 psi floor loading

Industrial Ceiling Height:
- 1st & 2nd Floor: 32' high
- Top Floor: 55' high

Utilities:

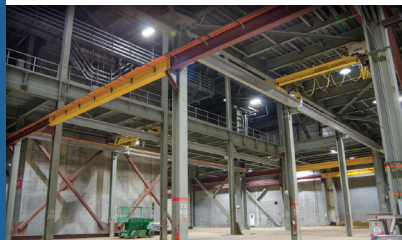
- Water & Sewer: Port of Grays Harbor
- Electrical: Grays Harbor PUD
- Electrical Capacity: 12.5kV/480 V AC Transformer, 1200 amps
- Fiber: Four separate fiber connections serving the park, coming from different locations and various providers



UNIQUE INFRASTRUCTURE TO GROW YOUR BUSINESS

The Turbine Building at Satsop Business Park, located in Elma, Washington offers 300,000 SF of Industrial Space including 14,300 SF of Office Space on 10 acres of laydown.

Flexible Office Space 14,300 SF of flexible office space including cubicles, kitchen and conference room. This space is ideal in supporting the manufacturing work adjacent in the Turbine Building. Stay connected with four separate fiber connections serving the park, coming from different locations and various providers.



FOR MORE INFORMATION CONTACT:

Alissa Shay/Business Development Manager
ashay@satsop.com | 360.482.1600 | www.satsop.com
Satsop Business Park | Suite 100, 150 Technology Lane, Elma, WA 98541



TURBINE BUILDING

300,000 SF Industrial/Office Space

Building Specs:

- Square Footage: 300,000 SF, 3 floors
- Industrial/Manufacturing
- Zoned: Satsop Development District - Industrial and manufacturing are permitted uses



Construction:

- 207'W x 590' L x 150' H
- 200 spi floor loading, (up to 700 in areas)
- Heavy structural steel metal clad



Office Space:

- Office: 14,300 SF
- Ceiling Height: 10'

