

# Retail Medical Space for Lease in South Tampa

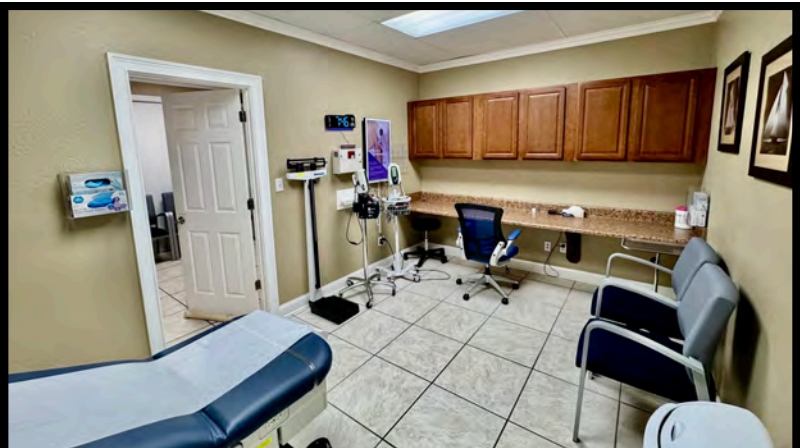
## 4257 W Kennedy Blvd, Tampa, FL 33609

High Traffic | Great Visibility | Ingress/Egress | Parking | End Cap | Dedicated Pylon

**Unit Sizes: 1,777 SF & 2,791 SF | Total Combined 4,568 SF**

Retail Medical (End Cap Space) for Lease. This unit is a fully built-out physician's office in excellent condition. Floor plan included. This unit would be ideal for a physicians office, concierge medicine, clinical research, urgent care, dermatology practice, or other healthcare or retail medical type uses. The space encompasses 4 retail units combined, total of 2,791 SF and 62 ft of storefront frontage on Kennedy Blvd. This unit could be combined with the neighboring chiropractic suite for a total of 4,568 SF if desired. The total rent for the 2,791 SF unit with base rent and property operating expenses is \$12,792 per month (including water, sewer and trash).

**Ideal Uses: Physicians Office, Concierge Medicine, Clinical Research, Urgent Care, Dermatology, Healthcare or other Retail Medical Type Uses**



Drone Video



CLICK HERE

Google Maps



CLICK HERE

Photos



CLICK HERE

Virtual Tour



CLICK HERE

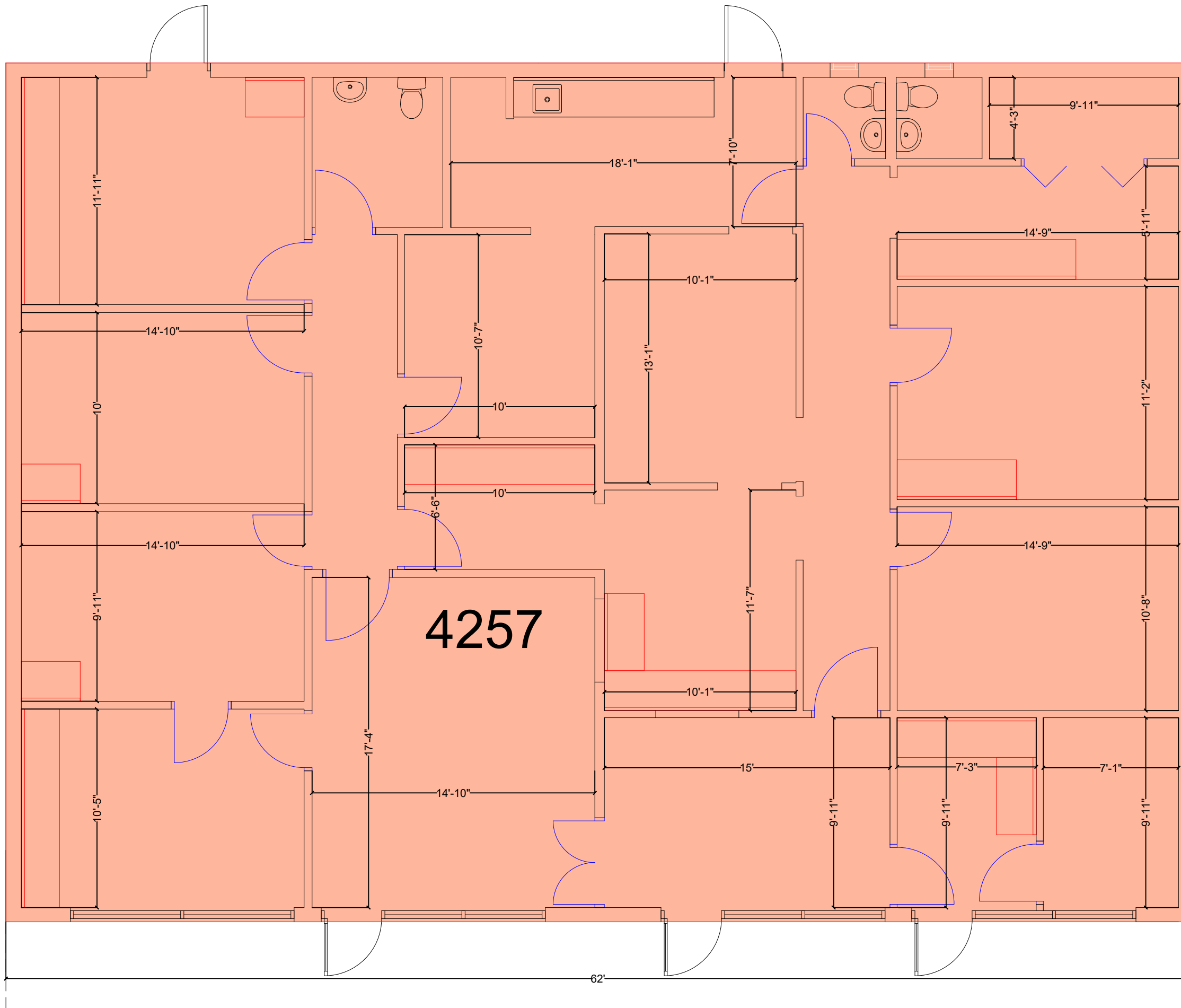


**Jeff Dervech**

Mobile: 813-766-9639

[jdervech@dervechre.com](mailto:jdervech@dervechre.com)

4257 West Kennedy Boulevard  
Tampa, Florida 33609

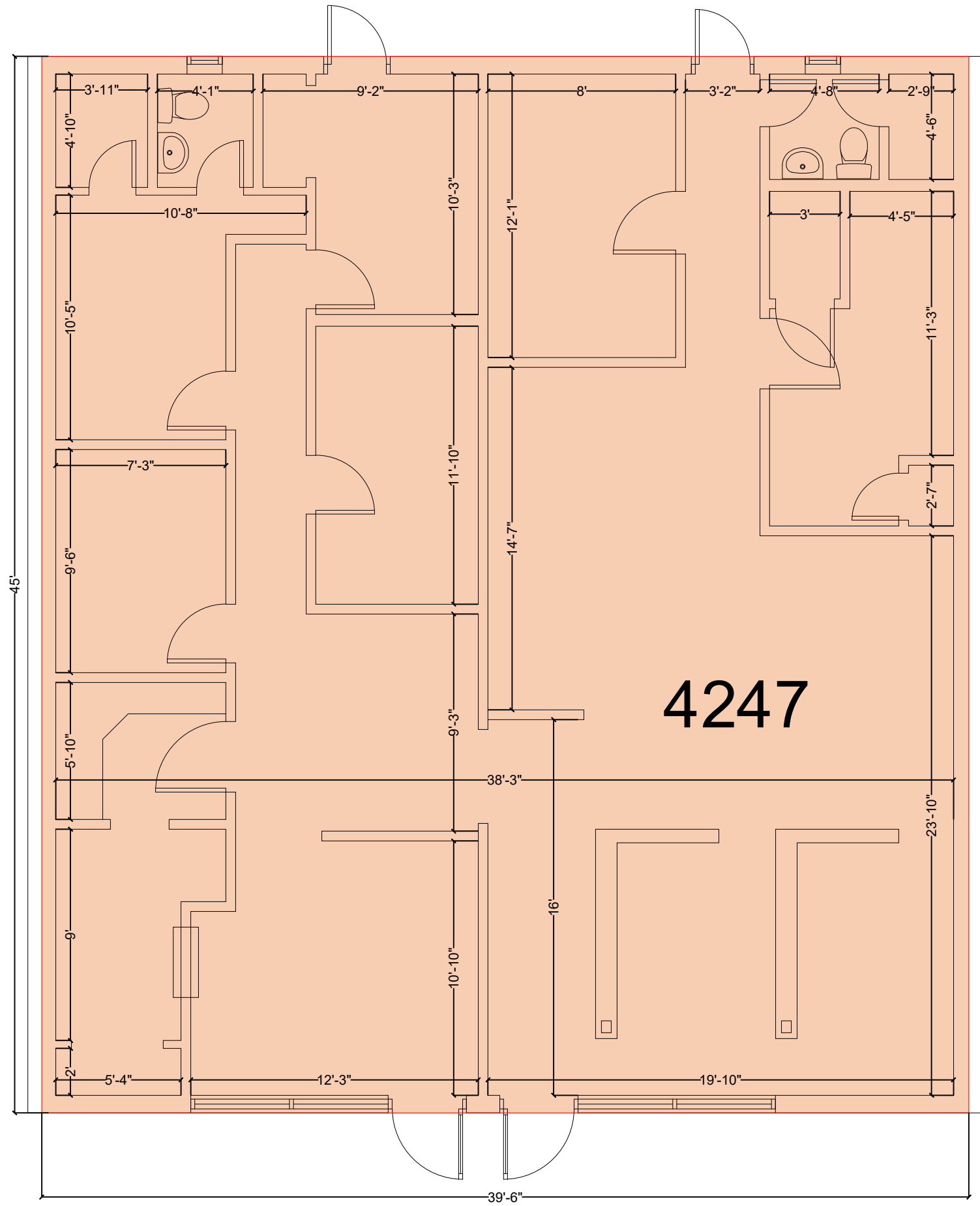


PROJECT NUMBER:	NKFM-0015
DRAWN BY:	CLS
CHECKED BY:	CLS
DATE:	2/4/2026
SCALE:	3/16"=1'-0"

SHEET TITLE  
**SUITE 4257  
FLOOR PLAN**

SHEET NUMBER:  
**A1.1**

4247 West Kennedy Boulevard  
Tampa, Florida 33609



ANSI/BOMA Z65.5-2025 Retail Standard Gross Leasable Area - 1,777 SF

PROJECT NUMBER:

NKFM-0015

DRAWN BY:

CLS

CHECKED BY:

CLS

DATE:

2/4/2026

SCALE:

3/16" = 1'-0"

SHEET TITLE:

SUITE 4247  
FLOOR PLAN

SHEET NUMBER:

A1.1