

MILESTONE PLAZA

22260 Hall Road
Clinton Township, MI 48036



Retail Opportunity
up to 2,800 ± SF

FOR LEASE

Description

Join Biggby Coffee in this site plan approved retail development slated to start construction in late 2025. Up to 2,800 ± SF available at the southeast corner of Hall Rd. and Elizabeth Rd. at a signalized intersection in Clinton Township, Michigan. With strong demographics and positioning on the heavily traveled Hall Rd., this is an ideal opportunity for businesses serving the local community.

Address

22260 Hall Road
Clinton Township, MI 48036

Features

- **Up to 2,800 ± SF of Retail Space**
- **Zoned B3 - General Business**
- **Monument Signage Available**
- **Ample Access & Visibility**
- **High Traffic Counts**

Asking Rent

Contact Broker

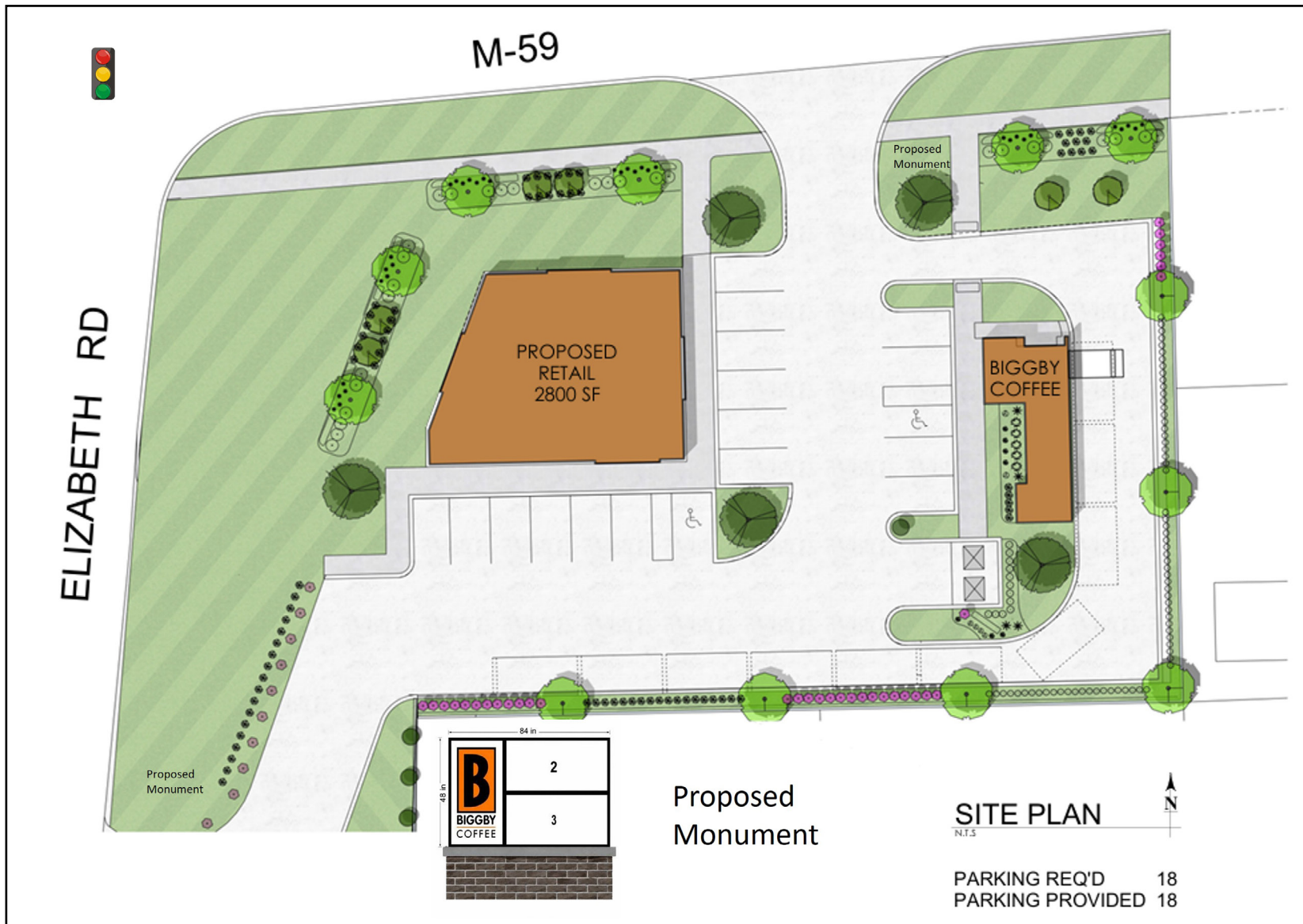
Traffic Counts

Hall Road Eastbound - 34,278+ cpd
Hall Road Westbound - 33,912+ cpd
Elizabeth Road - 12,151+ cpd

Demographics

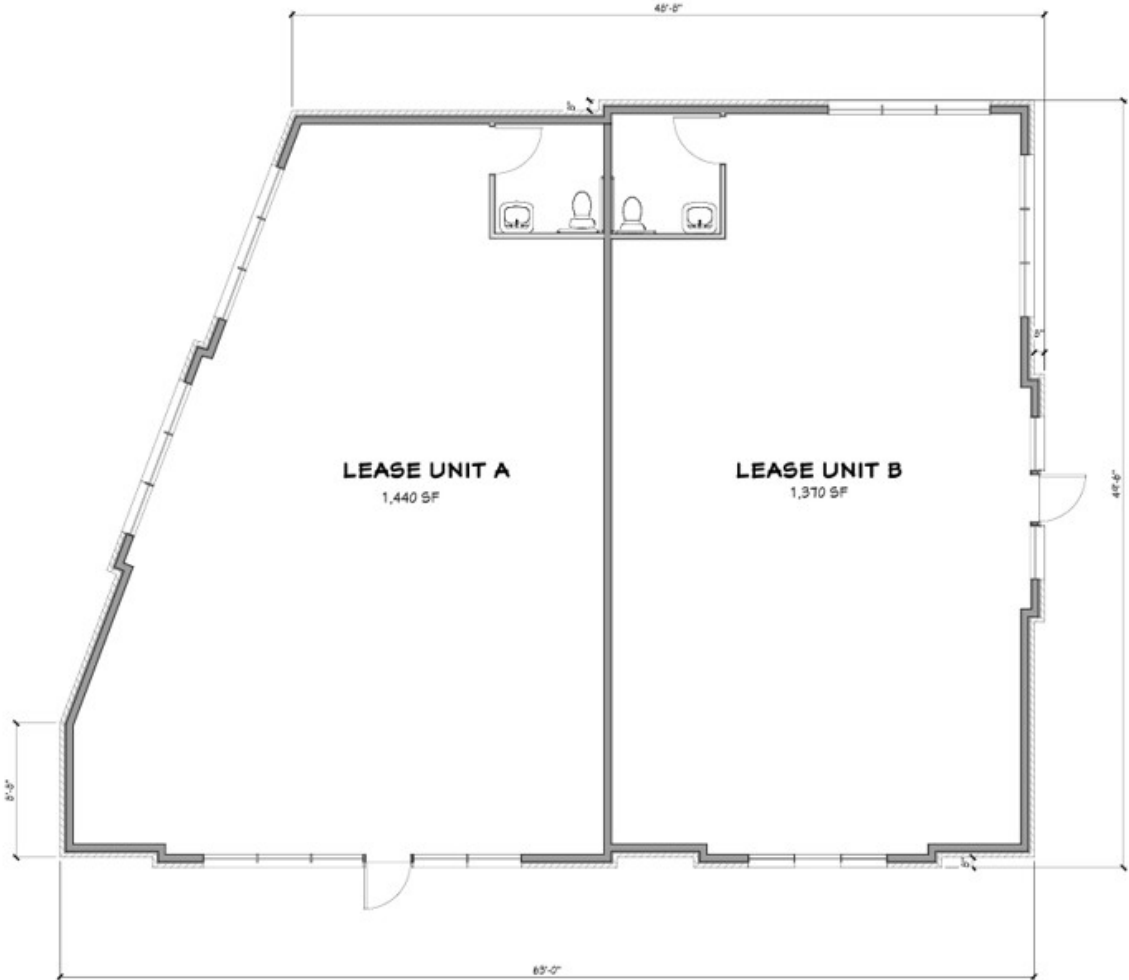
	1 MILE	3 MILES	5 MILES
POPULATION:	8,609	77,011	204,586
HOUSEHOLDS:	3,396	31,440	87,456
AVG. HOUSEHOLD INCOME:	\$90,568	\$111,319	\$106,308
DAYTIME POPULATION:	8,885	57,345	135,299

APPROVED SITE PLAN



The information contained herein has been obtained through sources deemed reliable by On Q Commercial Real Estate but cannot be guaranteed for its accuracy. We recommend to the buyer or lessee that any information, which is of special interest, should be obtained through independent verification. ALL MEASUREMENTS ARE APPROXIMATE.

PROPOSED FLOOR PLAN



FLOOR PLAN
SCALE: 1/8"=1'-0"

The information contained herein has been obtained through sources deemed reliable by On Q Commercial Real Estate but cannot be guaranteed for its accuracy. We recommend to the buyer or lessee that any information, which is of special interest, should be obtained through independent verification. ALL MEASUREMENTS ARE APPROXIMATE.

MICRO AERIAL

Including traffic counts



The information contained herein has been obtained through sources deemed reliable by On Q Commercial Real Estate but cannot be guaranteed for its accuracy. We recommend to the buyer or lessee that any information, which is of special interest, should be obtained through independent verification. ALL MEASUREMENTS ARE APPROXIMATE.

MACRO AERIAL



The information contained herein has been obtained through sources deemed reliable by On Q Commercial Real Estate but cannot be guaranteed for its accuracy. We recommend to the buyer or lessee that any information, which is of special interest, should be obtained through independent verification. ALL MEASUREMENTS ARE APPROXIMATE.



OnQ
COMMERCIAL
REAL ESTATE

JOE QONJA

Principal Broker

C: (248) 977-7799

O: (248) 712-3300

E: joe@onqcre.com

LEO ALLUS

Associate

C: (248) 321-3325

O: (248) 712-3300

E: leo@onqcre.com

100 W. Long Lake Rd. Suite 122 Bloomfield Hills, MI 48304

www.onqcre.com

The information contained herein has been obtained through sources deemed reliable by On Q Commercial Real Estate but cannot be guaranteed for its accuracy. We recommend to the buyer or lessee that any information, which is of special interest, should be obtained through independent verification. ALL MEASUREMENTS ARE APPROXIMATE.