

# For Lease

*1,390 Square Feet*

## Office - Medical

**204 Spring Street  
Macon, Georgia 31201**



Ben Walden  
o. 478-743-2671  
c. 478-954-1047

[bwalden@mtpropertygroup.com](mailto:bwalden@mtpropertygroup.com)

Will Marshall  
o. 478-743-2671  
c. 404-983-1511

[wmarshall@mtpropertygroup.com](mailto:wmarshall@mtpropertygroup.com)



**MURPHEY TAYLOR & ELLIS**

PROPERTY GROUP

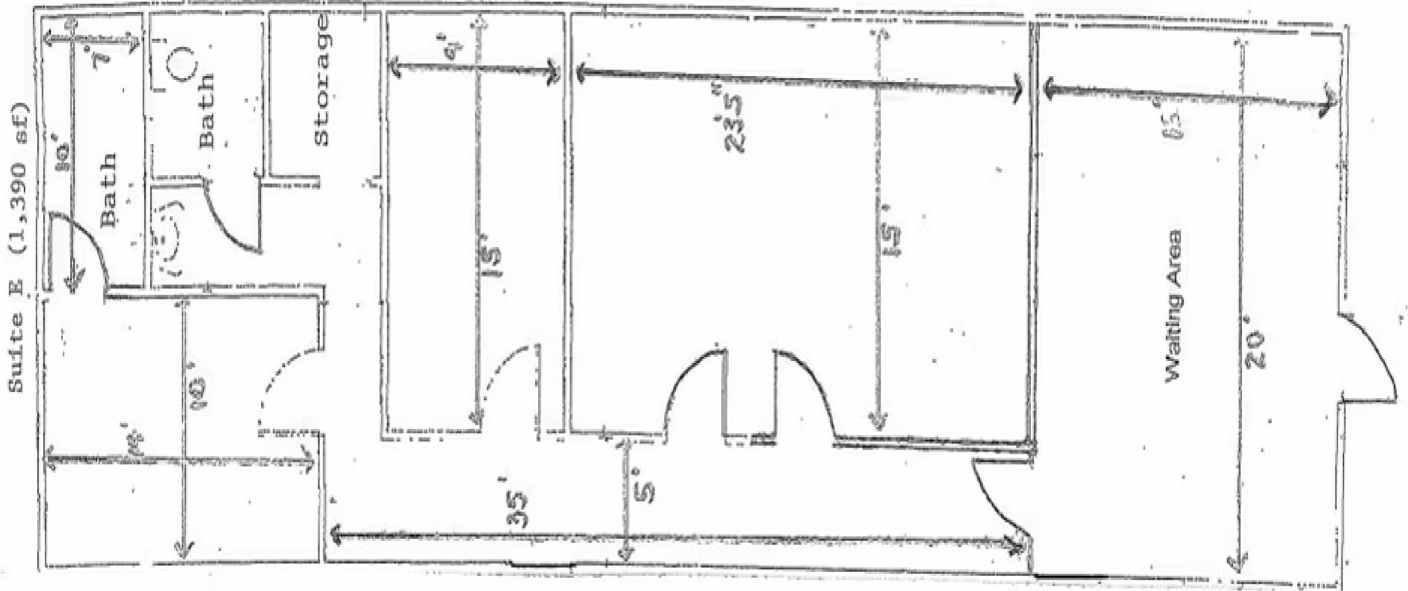
3095 Vineville Avenue Macon, GA 31204



# Suite E

\$12.00 Per SQFT Per Year - NNN

**204 Spring Street  
Macon, Georgia 31201**



- 1,390 Square Feet
- Generous Off-Street Paved Parking
- Full Build-Out Space
- Corner Lot w/ High Visibility
- Great Access to I16/I75 Corridor

### Tenant List

- CW Matthews
- Spine Center & Orthopedics
- Mike Hostillo Law Firm

## MURPHEY TAYLOR & ELLIS

PROPERTY GROUP

Ben Walden  
o. 478-743-2671  
c. 478-954-1047

[bwalden@mtpropertygroup.com](mailto:bwalden@mtpropertygroup.com)

Will Marshall  
o. 478-743-2671  
c. 404-983-1511

[wmarshall@mtpropertygroup.com](mailto:wmarshall@mtpropertygroup.com)

**204 Spring Street  
Macon, Georgia 31201**

**Murphey Taylor & Ellis  
478-743-2671  
3095 Vineville Avenue  
Macon, GA 31204**

**Ben Walden  
o. 478-743-2671  
c. 478-954-1047**

**[bwalden@mtepropertygroup.com](mailto:bwalden@mtepropertygroup.com)**

**Will Marshall  
o. 478-743-2671  
c. 404-983-1511**

**[wmarshall@mtepropertygroup.com](mailto:wmarshall@mtepropertygroup.com)**



**MURPHEY TAYLOR & ELLIS**  
**P R O P E R T Y   G R O U P**

© 2025 MTERE, LLC. All rights reserved.

This information has been obtained from sources believed to be reliable; however, it has not been verified for accuracy or completeness. MTERE, LLC makes no guarantees, representations, or warranties, and accepts no responsibility or liability for the accuracy, completeness, or reliability of the information provided herein. Interested parties should conduct a careful, independent inspection of the property and verify all information. All photos, images, and other content are the property of their respective owners.