

# 1,900-4,200 SQ FT AVAILABLE IN THE HUB AT 152<sup>ND</sup> ST

2929 3<sup>rd</sup> Avenue, Bronx, NY 10455



## 3 THINGS TO KNOW:

- + 50+ Ft Frontage
- ! Possession Arranged
- 📍 Storage Space Available

## NEIGHBORS INCLUDE:



**CITYMD**  
URGENT CARE



**Capital One**

**five  
BELOW**

**Foot Locker**

**carter's**

**Burlington  
Coat Factory**

THE CHILDREN'S  
**PLACE**

**Marshalls**

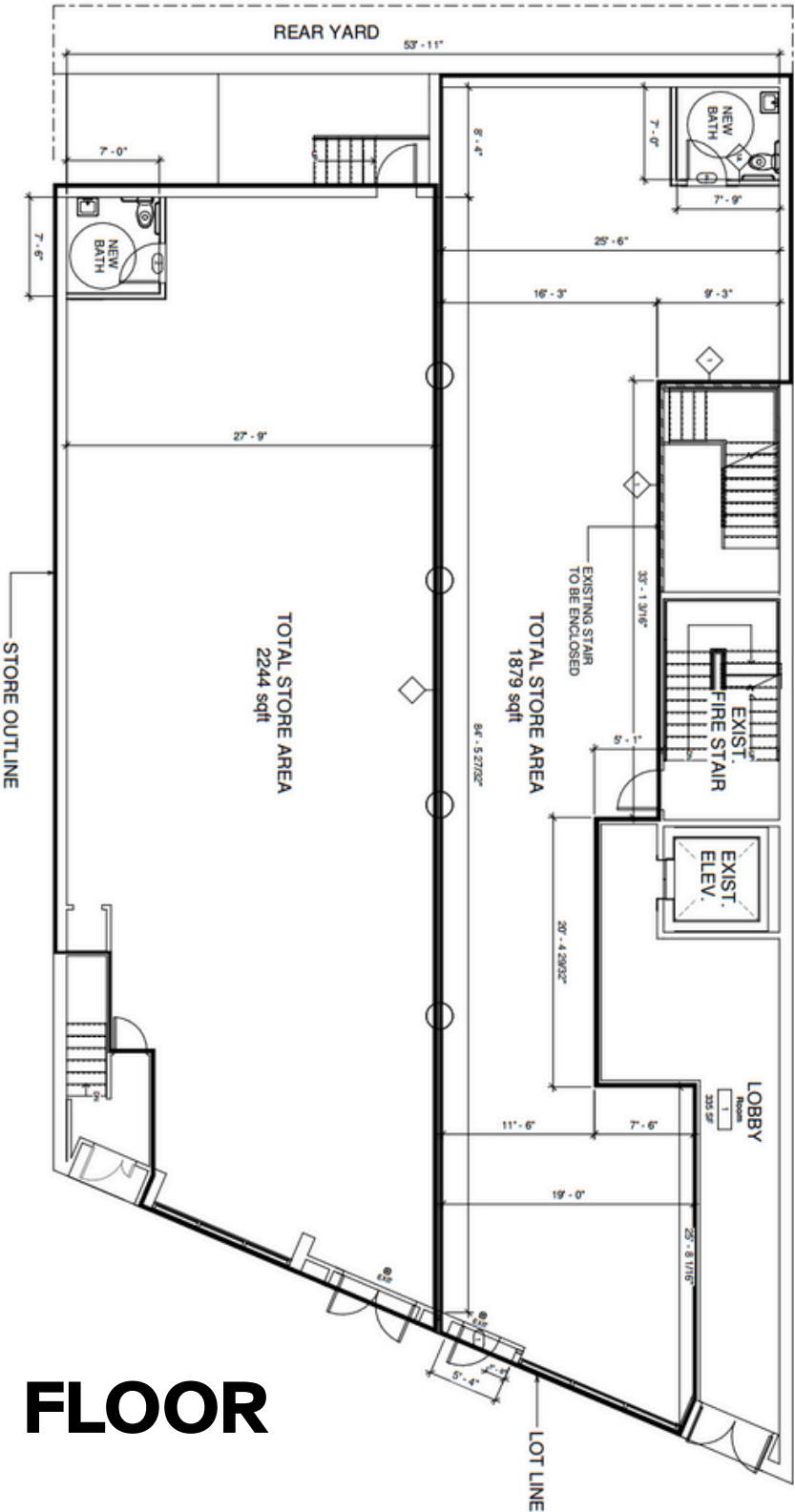


### CONTACT: Rick Stassa

Emerald Commercial Properties, LLC  
rick@emeraldcpnny.com  
646-960-6800  
www.emeraldcpnny.com

**EMERALD**  
COMMERCIAL PROPERTIES

All information furnished herein is from sources deemed reliable. No warranty or representation is made to the accuracy thereof and it is submitted subject to errors, omissions, change of price, prior sale, or withdrawal without notice.



PROPOSED FIRST FLOOR PLAN  
 1/8" = 1'-0"

# FIRST FLOOR

PROJECT TITLE  
 RETAIL STORE  
 RENOVATION  
 2929 THIRD AVE  
 BRONX, NY 10455.

BOARD DATA  
 ZONE: C4A MAP: 1A  
 BLOCK: 2929 LOT: 48  
 DRAWING TITLE  
 PROPOSED FIRST FLOOR  
 PLAN

PROJECT NUMBER  
 SUBMISSION INFO  
 DATE: [ ] DRAWN BY: A.O.

NO.	REVISION	DATE	BY	CHKD.

**ERROL  
 MCINTOSH  
 RA**

Registered Architect  
 1 WOLFE'S LANE  
 PELHAM  
 NEW YORK 10803  
 TEL: (914) 500-2247  
 FAX: (914) 500-2248

NOTICE: The design shown and described herein is the property of the architect and is to be used only for the project and site identified herein. No part of this drawing may be reproduced, stored in a retrieval system, or transmitted in any form or by any means, electronic, mechanical, photocopying, recording, or by any information storage and retrieval system, without the prior written permission of the architect. The architect shall not be responsible for any errors or omissions in this drawing, or for any consequences arising therefrom, whether or not such errors or omissions are caused in whole or in part by negligence, active or passive, in any cause, and whether or not such errors or omissions are caused in whole or in part by the negligence, active or passive, of any contractor, subcontractor, government agency, or other third party. The architect shall not be responsible for any errors or omissions in this drawing, or for any consequences arising therefrom, whether or not such errors or omissions are caused in whole or in part by negligence, active or passive, in any cause, and whether or not such errors or omissions are caused in whole or in part by the negligence, active or passive, of any contractor, subcontractor, government agency, or other third party.

SCALE: SHOWN AS: SHEET NUMBER:  
 A-104  
 05 OF 05

