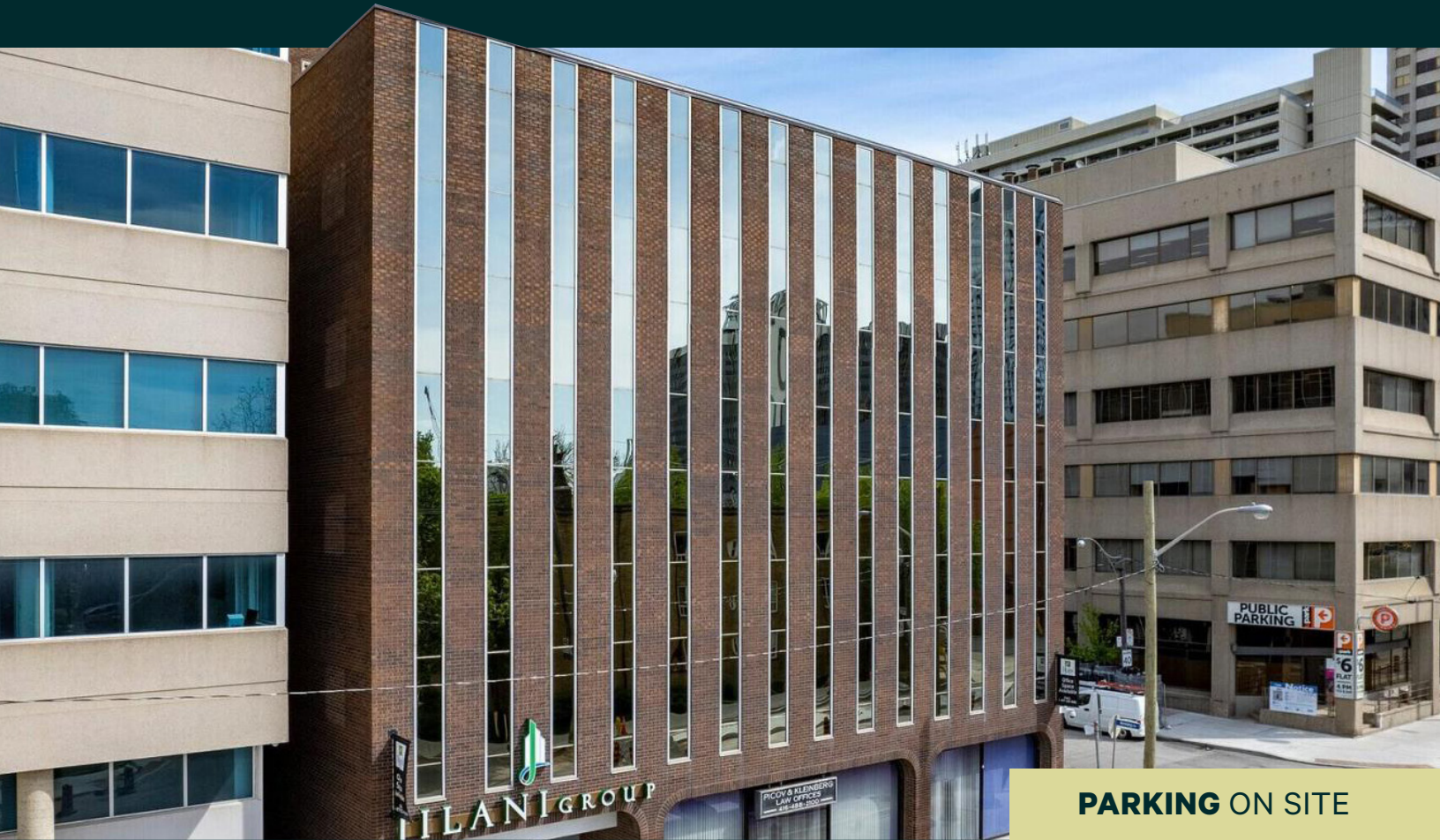


OFFICE FOR LEASE

# 110 EGLINTON AVENUE WEST



**Shayla Esakov**  
Sales Representative  
+1 647 965 6966  
Shayla.Esakov@cbre.com

**CBRE**

**PROPERTY PHOTOS**



**SUITE 201**

**SIZE**

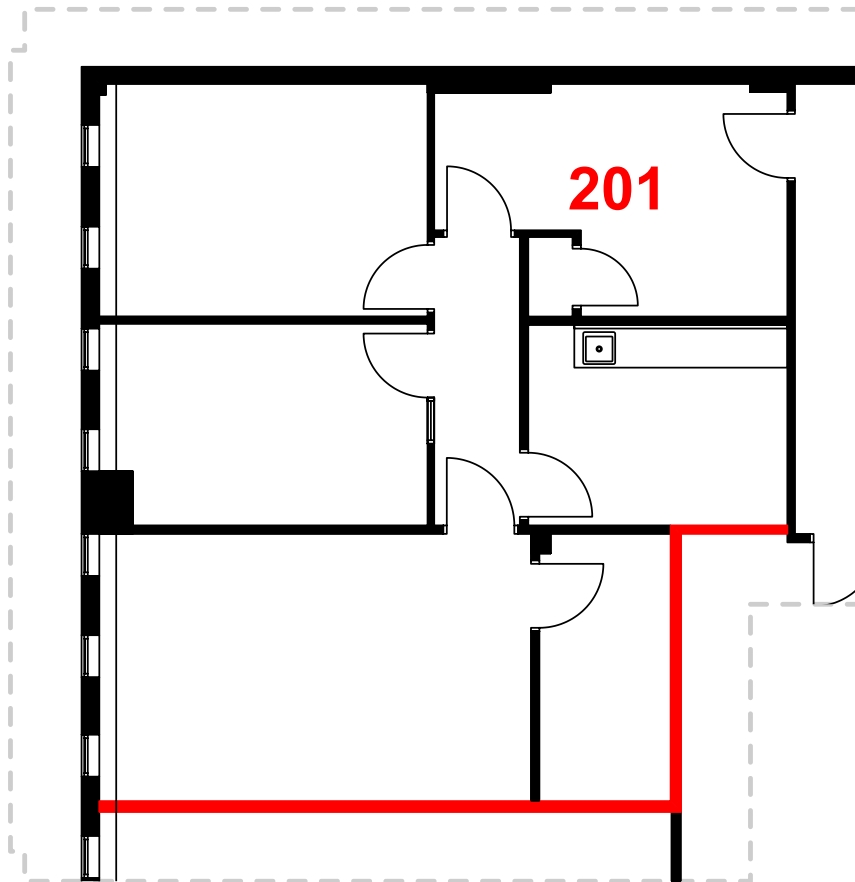
1,259 Sq. Ft.

**NET RENT**

Contact Listing Agents

**ADDITIONAL RENT**

\$17.75 (2026 estimate)



**SUITE 303H**

**SIZE**

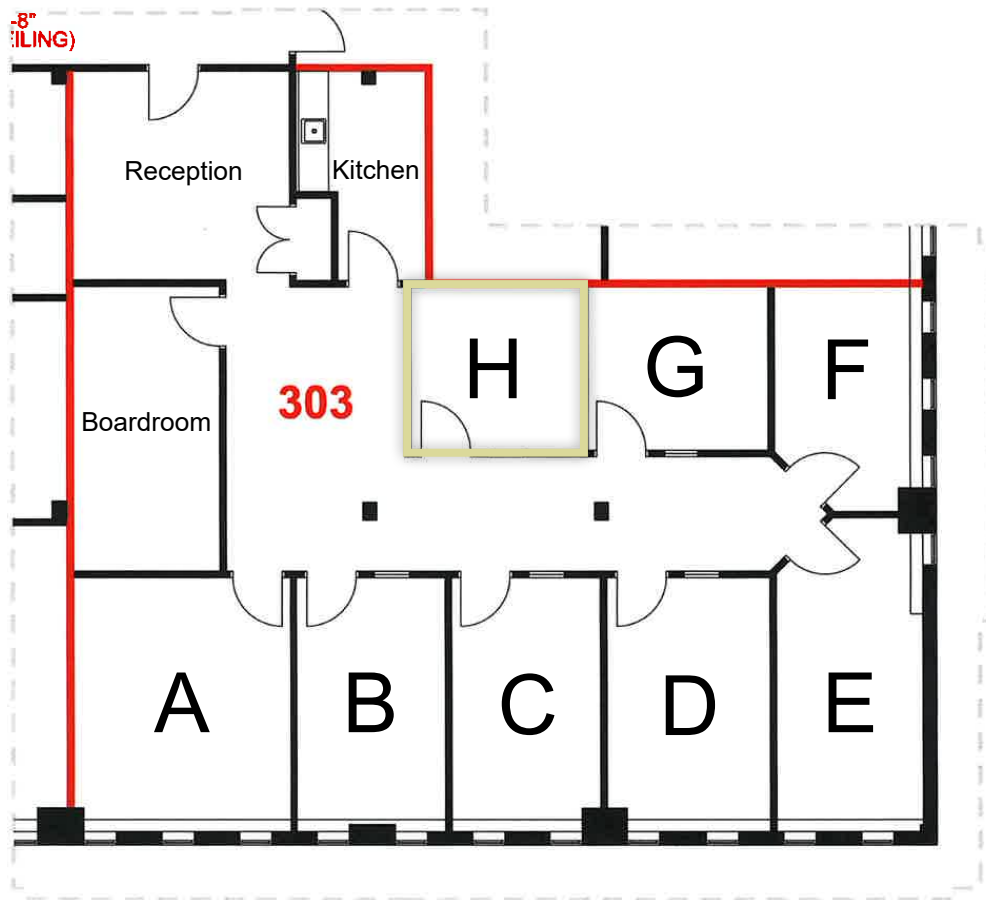
200 Sq. Ft.

**GROSS RENT**

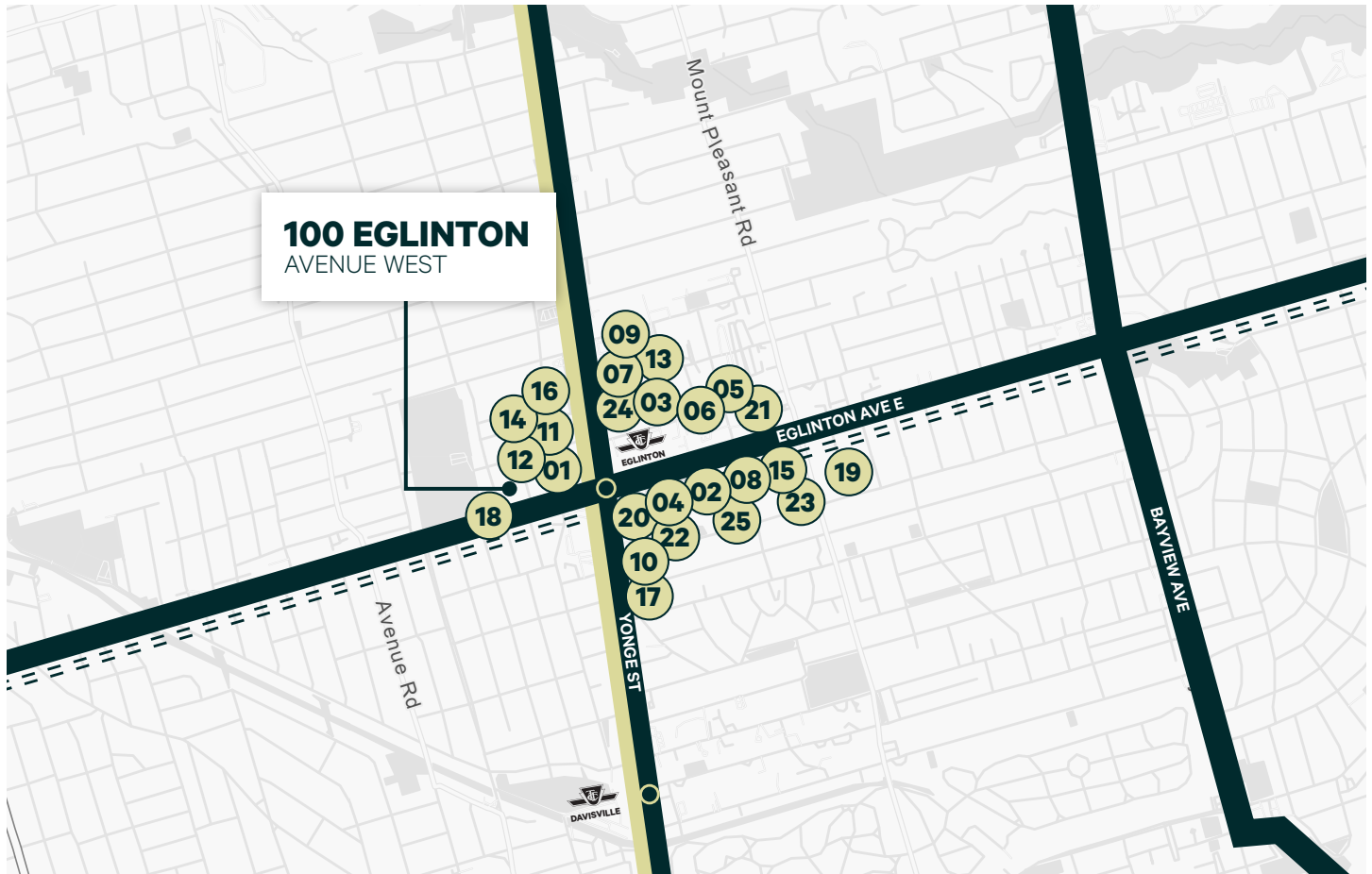
\$1,000 / Month

**COMMENTS**

Shared boardroom and kitchen available for use.



**AMENITIES NEARBY**



**FOOD & DRINKS**

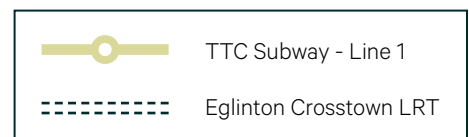
- 01. Pickle Barrel
- 02. The Fox: A Firkin Pub
- 03. The Keg Steakhouse
- 04. MORU
- 05. Shake Shack
- 06. Mcdonald's
- 07. Pizza Pizza
- 08. Pho Anh Vu
- 09. PAI Northen Thai Kitchen
- 10. Tim Hortons

**SHOPPING**

- 11. Metro
- 12. Avolve
- 13. Galleria
- 14. Yonge & Eglinton Centre
- 15. Loblaws
- 16. Indigo
- 17. Farmboy
- 18. Market Convenience
- 19. No Frills
- 20. 7-Eleven

**FITNESS**

- 21. GoodLife Fitness
- 22. F45 Training
- 23. Metric Fitness
- 24. OMJ Fitness
- 25. Orangetheory Fitness



OFFICE FOR LEASE

---

# 110 EGLINTON AVENUE WEST

**Shayla Esakov**

Sales Representative

+1 647 965 6966

Shayla.Esakov@cbre.com

**CBRE**

**CBRE Limited, Real Estate Brokerage**, 145 King Street West, Suite 1100, Toronto, Ontario Canada, M5H 1J8 +1 416 362 2244, [www.cbre.ca](http://www.cbre.ca)

This disclaimer shall apply to CBRE Limited, Real Estate Brokerage, and to all other divisions of the Corporation; to include all employees and independent contractors ("CBRE"). The information set out herein, including, without limitation, any projections, images, opinions, assumptions and estimates obtained from third parties (the "Information") has not been verified by CBRE, and CBRE does not represent, warrant or guarantee the accuracy, correctness and completeness of the Information. CBRE does not accept or assume any responsibility or liability, direct or consequential, for the Information or the recipient's reliance upon the Information. The recipient of the Information should take such steps as the recipient may deem necessary to verify the Information prior to placing any reliance upon the Information. The Information may change and any property described in the Information may be withdrawn from the market at any time without notice or obligation to the recipient from CBRE. CBRE and the CBRE logo are the service marks of CBRE Limited and/or its affiliated or related companies in other countries. All other marks displayed on this document are the property of their respective owners. All Rights Reserved.