



**LEE & ASSOCIATES**  
COMMERCIAL REAL ESTATE SERVICES  
TAMPA BAY

**BEST VALUE  
IN WESTSHORE**



**28,420 SF**



**CLICK OR SCAN  
TO WATCH  
PROPERTY VIDEO**

**FREE STANDING/SINGLE TENANT OFFICE BUILDING  
FOR LEASE IN THE WESTSHORE SUBMARKET**

**EISENHOWER TECHNOLOGY PARK 4710 EISENHOWER BLVD, BLDG D | TAMPA, FL 33634**

**JEFF TOLRUD, CCIM**  
813 300 1436  
jtolorud@lee-associates.com

**JULIA SILVA, SIOR**  
813 230 8008  
jsilva@lee-associates.com

**JESSICA MIZRAHI, SIOR**  
813 804 0886  
jmizrahi@lee-associates.com

**BEN EWERS**  
352 362 8535  
bewers@lee-associates.com



**LEE & ASSOCIATES**  
TAMPA BAY

All information furnished regarding property for sale, rental or financing is from sources deemed reliable, but no warranty or representation is made to the accuracy thereof and same is submitted to errors, omissions, change of price, rental or other conditions prior to sale, lease or financing or withdrawal without notice. No liability of any kind is to be imposed on the broker herein.

## PROPERTY OVERVIEW

Presenting an exceptional opportunity to lease 28,420 SF of prime Office/Lab space situated in Tampa's highly-desireable Westshore Submarket. Eisenhower Technology Park features prominent visibility from the Veterans Expressway, strong signage opportunities along George Road, and convenient access to major thoroughfares including the Veterans Expressway, Hillsborough Avenue, Courtney Campbell Causeway, and I-275.

## PROPERTY HIGHLIGHTS

- Available November 2026
- 100% Office
- Direct Access on George Road
- Free-Standing Building w/ Signage Opportunity
- On-Site Property Management
- 1 Dock-High Door (Ability to Add 6 Grade-Level Doors)
- Internet Available Through Spectrum or Frontier
- Fully Spinklered



**EISENHOWER TECHNOLOGY PARK 4710 EISENHOWER BLVD, BLDG D | TAMPA, FL 33634**

JEFF TOLRUD, CCIM  
813 300 1436  
jtolrud@lee-associates.com

JULIA SILVA, SIOR  
813 230 8008  
jsilva@lee-associates.com

JESSICA MIZRAHI, SIOR  
813 804 0886  
jmizrahi@lee-associates.com

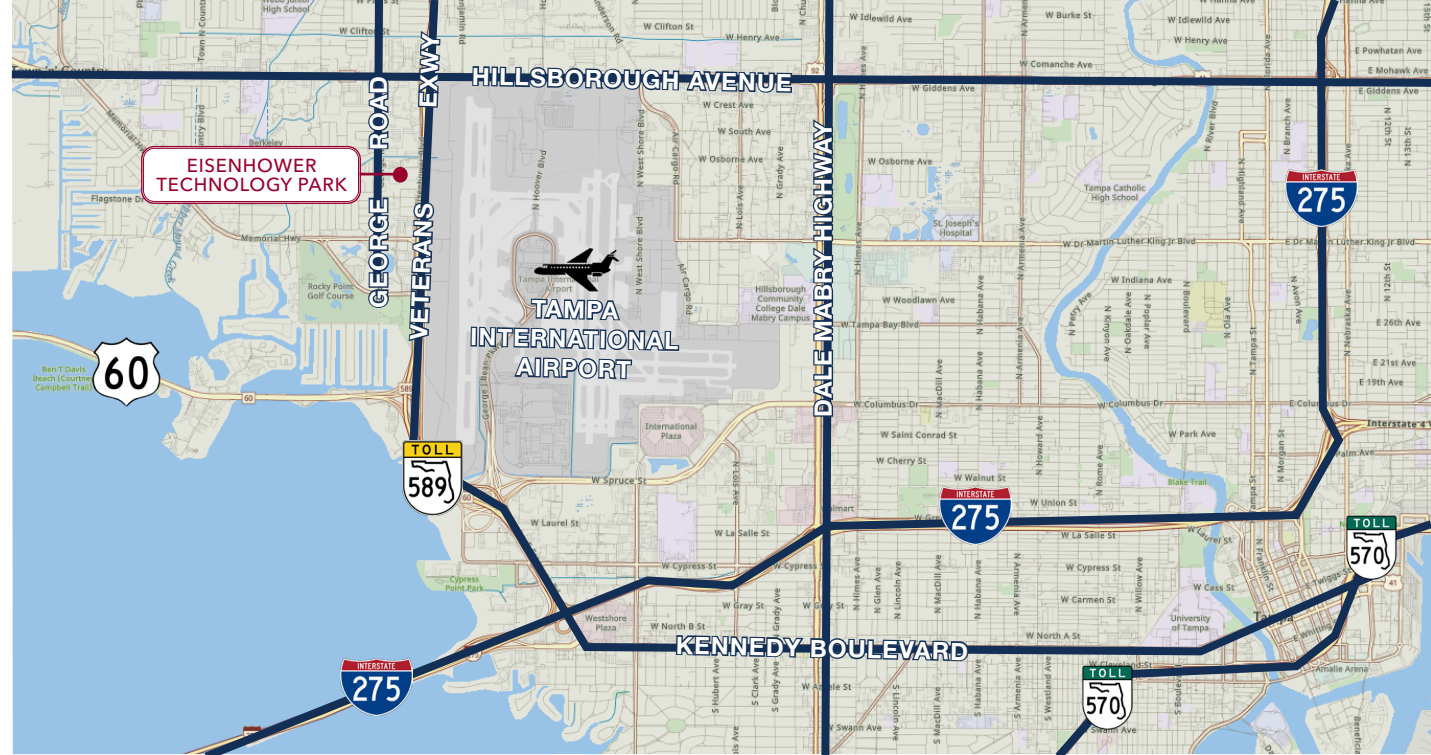
BEN EWERS  
352 362 8535  
bewers@lee-associates.com



All information furnished regarding property for sale, rental or financing is from sources deemed reliable, but no warranty or representation is made to the accuracy thereof and same is submitted to errors, omissions, change of price, rental or other conditions prior to sale, lease or financing or withdrawal without notice. No liability of any kind is to be imposed on the broker herein.

## DRIVING DISTANCES

- Veterans Expwy 0.7 Miles
- Hillsborough Ave 0.7 Miles
- SR 60 1.7 Miles
- I-275 3.3 Miles
- Dale Mabry Hwy 3.4 Miles
- Kennedy Blvd 3.7 Miles
- Selmon Expwy 8.0 Miles



## DEMOGRAPHICS

### POPULATION

	TOTAL RESIDENTS	DAYTIME WORKFORCE
1 MILE	8,134	11,410
5 MILES	223,419	302,868
10 MILES	738,747	984,876



## EISENHOWER TECHNOLOGY PARK 4710 EISENHOWER BLVD, BLDG D | TAMPA, FL 33634

JEFF TOLRUD, CCIM  
813 300 1436  
jtolrud@lee-associates.com

JULIA SILVA, SIOR  
813 230 8008  
jsilva@lee-associates.com

JESSICA MIZRAHI, SIOR  
813 804 0886  
jmizrahi@lee-associates.com

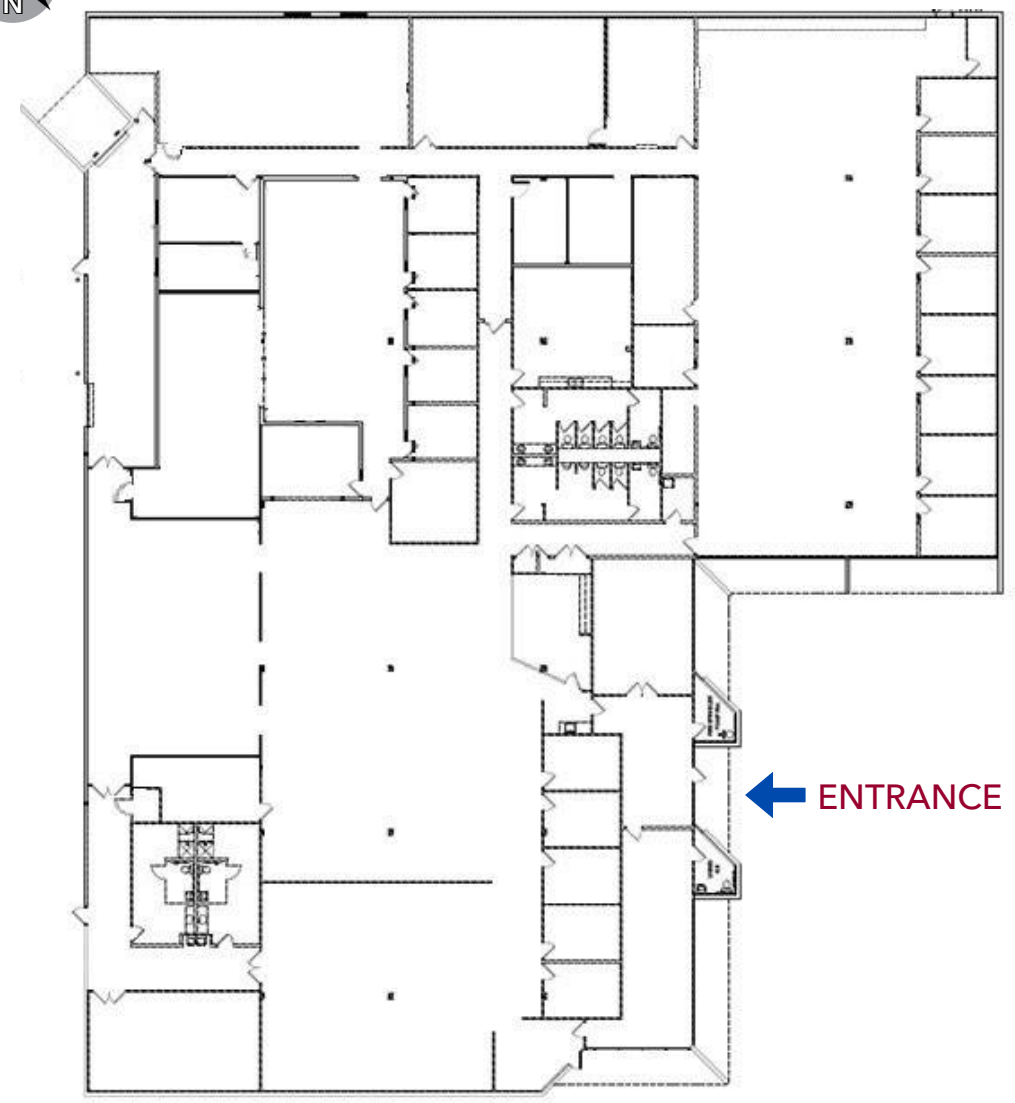
BEN EWERS  
352 362 8535  
bewers@lee-associates.com



All information furnished regarding property for sale, rental or financing is from sources deemed reliable, but no warranty or representation is made to the accuracy thereof and same is submitted to errors, omissions, change of price, rental or other conditions prior to sale, lease or financing or withdrawal without notice. No liability of any kind is to be imposed on the broker herein.



# FLOOR PLAN



← ENTRANCE

## EISENHOWER TECHNOLOGY PARK 4710 EISENHOWER BLVD, BLDG D | TAMPA, FL 33634

**JEFF TOLRUD, CCIM**  
813 300 1436  
jtolrud@lee-associates.com

**JULIA SILVA, SIOR**  
813 230 8008  
jsilva@lee-associates.com

**JESSICA MIZRAHI, SIOR**  
813 804 0886  
jmizrahi@lee-associates.com

**BEN EWERS**  
352 362 8535  
bewers@lee-associates.com



All information furnished regarding property for sale, rental or financing is from sources deemed reliable, but no warranty or representation is made to the accuracy thereof and same is submitted to errors, omissions, change of price, rental or other conditions prior to sale, lease or financing or withdrawal without notice. No liability of any kind is to be imposed on the broker herein.