



SPANISH FORK

SPANISH FORK FLEX WAREHOUSE

184 WEST 1400 NORTH | SPANISH FORK, UT 84660



FOR LEASE
\$1.25/Month NNN

UTAH LAKE



HIGHLIGHTS

SKYLER PETERSON, SIOR
801.656.7354
speterson@legendcommercial.com

TRE BOURDEAUX, SIOR
801.824.0397
tbourdeaux@legendcommercial.com

PARKER TAGGART
801.928.1815
ptaggart@legendcommercial.com

- Total Available:
 - One (1) 2,995 SF Unit
 - Office: 308 SF
 - Warehouse: 2,687 SF
- Zoning: I-1 (Light Industrial)
- Access: Great Freeway Access ¼ Mile From I-15 Via Exit 257
- One (1) 14'x14' Grade Level Doors
- Location: Conveniently Located In The Highly Desirable Spanish Fork Submarket
- Clear Height: 14'-19'
- Gas Forced Heaters
- Power: 200 Amp / 120V 3-Phase / 4-Wire
- Free Span Building
- Mop Sink in Warehouse

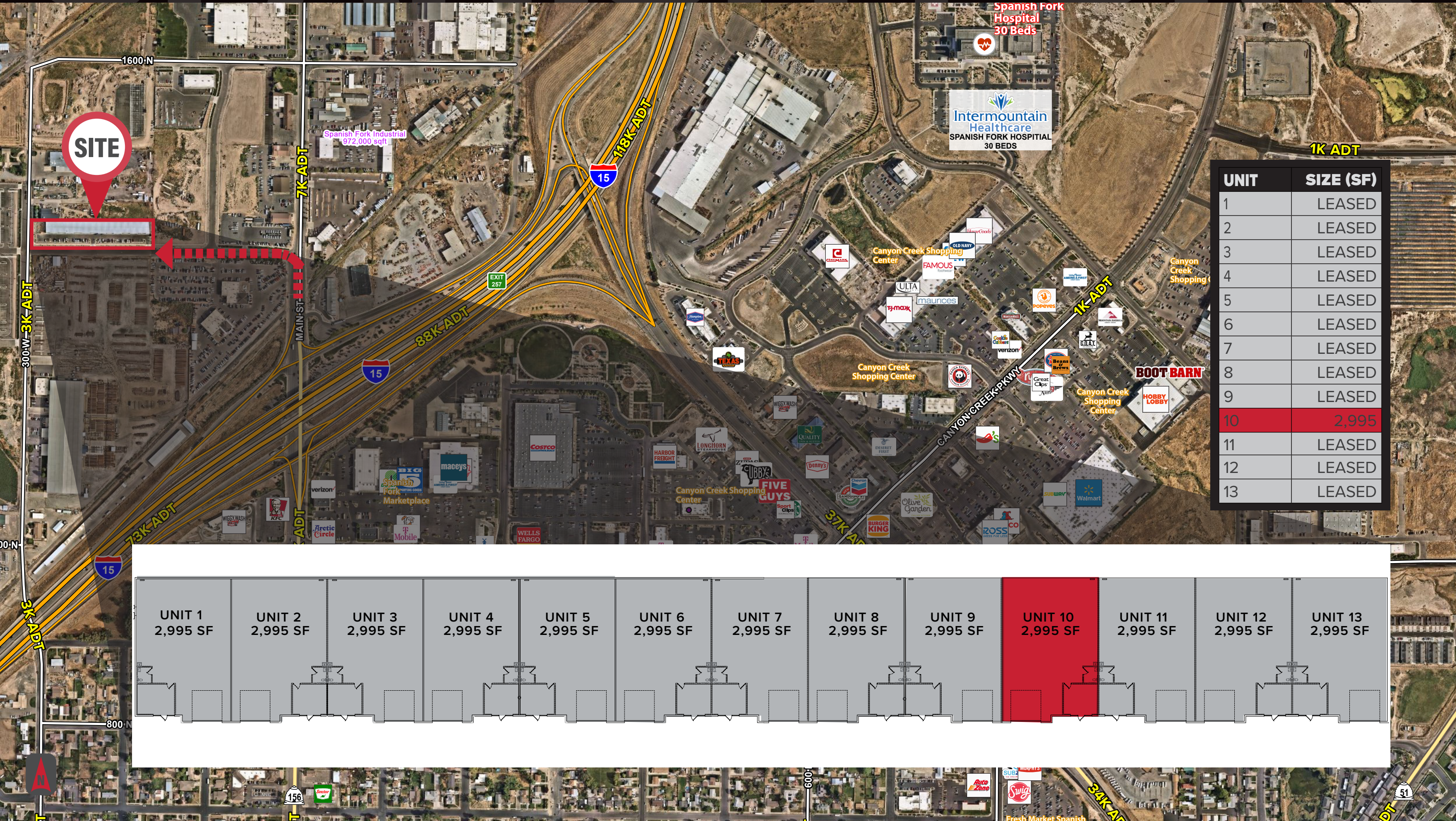
DEMOGRAPHICS

	1 MILE	3 MILE	5 MILE
2023 EST. POPULATION	4,998	37,561	127,561
2028 PROJECTED POPULATION	5,297	41,307	142,830
2023 EST. DAYTIME POPULATION	2,941	15,034	35,705
2023 EST. AVG HH INCOME	\$90,969	\$100,260	\$102,170
2023 EST. HOUSEHOLDS	1,454	11,314	38,647
2023 EST. BUSINESSES	187	1,387	3,891



2180 S. 1300 E. #240 | Salt Lake City, UT 84115
801.930.6750 | www.legendcommercial.com

SPANISH FORK



UNIT	SIZE (SF)
1	LEASED
2	LEASED
3	LEASED
4	LEASED
5	LEASED
6	LEASED
7	LEASED
8	LEASED
9	LEASED
10	2,995
11	LEASED
12	LEASED
13	LEASED

