



**ZACUTO GROUP**  
COMMERCIAL REAL ESTATE

735

S. LA BREA  
AVENUE

LOS ANGELES

**\$338/SF**

**FOR SALE/LEASE**

# ONE OF A KIND

INTRODUCING A RARE CHARACTER ASSET ON LA BREA AVENUE—AN ICONIC BOW-TRUSS STRUCTURE OFFERING TREMENDOUS POTENTIAL IN ONE OF LA'S MOST DYNAMIC, HIGH-TRAFFIC LOCATIONS.

WITH ±60 FEET OF FRONTAGE AND NONSTOP EXPOSURE, THIS PROPERTY PROVIDES A POWERFUL CANVAS FOR RETAILERS, CREATIVE USERS, AND BRANDS SEEKING PRESENCE.

A TRUE VALUE-ADD OPPORTUNITY WITH SIGNIFICANT LONG-TERM UPSIDE.

OFFERED FOR SALE AND FOR LEASE.



# PROPERTY DETAILS

## ADDRESS

735 S. La Brea Avenue  
Los Angeles, California, 90036

## PRICE

\$7,995,000 | \$338/SF

## BUILDING SIZE

23,660 SF

## LOT SIZE

11,330 SF

## PROPERTY TYPE

Office / Retail

## FLOORS

2

## YEAR BUILT

1938

## ZONING

C2-1

## APN

5089-001-012

## LISTING TEAM

### **JAKE ZACUTO**

Managing Director  
310.469.9012  
jake@zacutogroup.com  
DRE #01377441

### **LEOR BINSHTOCK**

Executive Vice President  
310.469.9014  
leor@zacutogroup.com  
DRE #01773798

### **JOHN LOGAN**

Associate Vice President  
931.561.9561  
john@zacutogroup.com  
DRE# 02161147

### **ZACUTO GROUP**

1250 6th Street  
Santa Monica, CA 90401  
310.469.9012  
www.zacutogroup.com

# LEASE DETAILS

---

## Availabilities

---

<b>RETAIL (GROUND)</b>	2,000 - 11,830 SF
<b>OFFICE SF (2ND FL)</b>	11,830 SF
<b>FULL BUILDING</b>	23,660 SF

## Rate

---

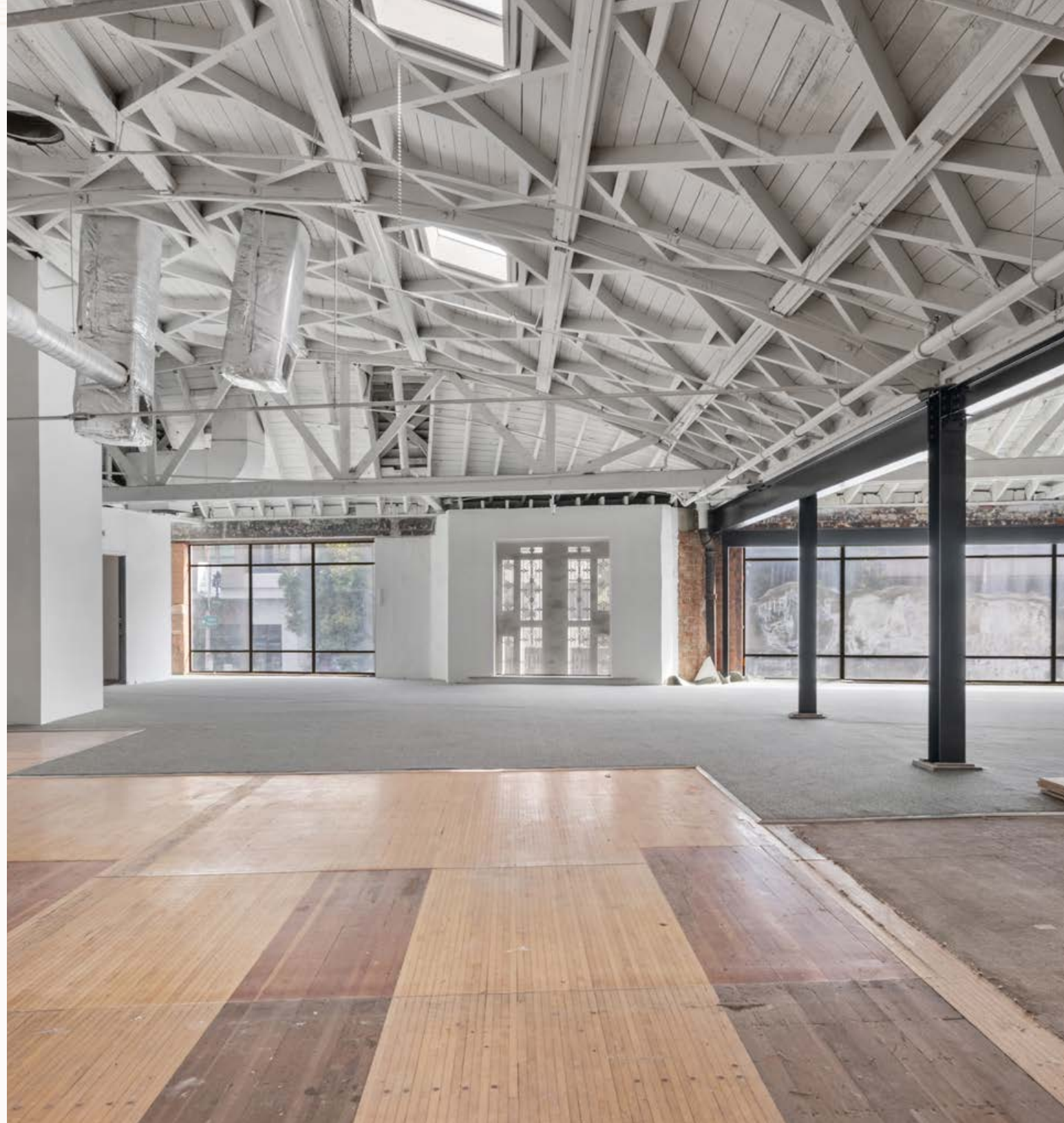
<b>RETAIL</b>	\$2.25/SF + NNN
<b>OFFICE</b>	\$1.95/SF + MG

## Parking

---

2:1,000 @ \$200/space\*

Available at structure across the street



# SALE DETAILS

---

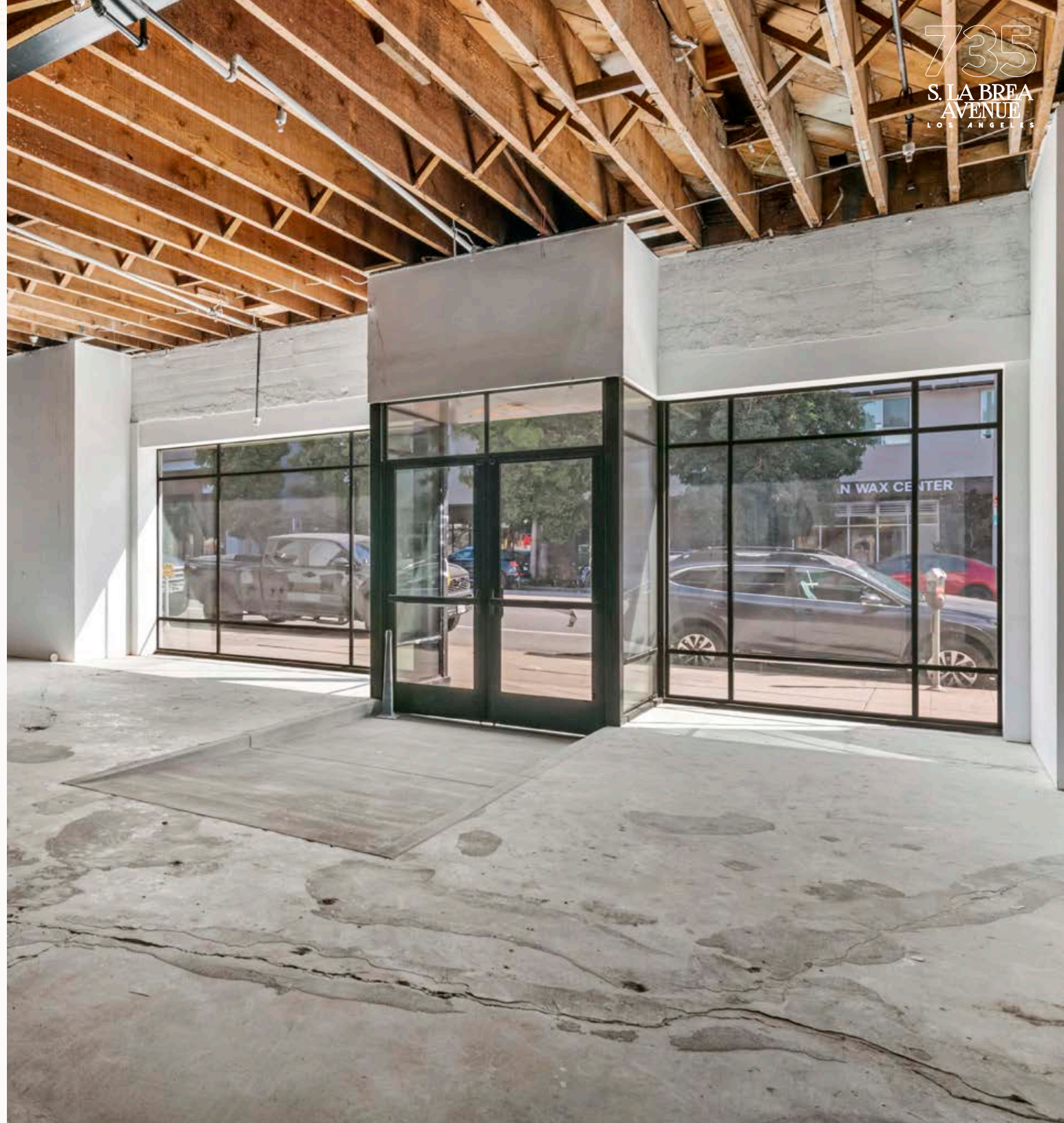
**PRICE:** \$7,995,000

**PPSF:** \$338/SF

**BUILDING SIZE:** 23,660 SF

**LOT SIZE:** 11,330 SF

**LAND PPSF:** \$706/SF







# ART DECO GEM

ART DECO GEM IN THE HEART OF THE MIRACLE MILE.  
A UNIQUE MULTI-USE PROPERTY WITH STRIKING FACADE,  
ARCHITECTURAL DETAILS, AND EXPANSIVE INTERIOR LAYOUT  
IDEAL FOR FLAGSHIP RETAIL OR OFFICE.

PACIFIC DESIGN CENTER

PETERSEN  
AUTOMOTIVE MUSEUM

LACMA

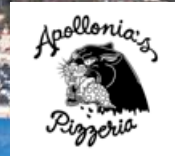
LA BREA  
TAR PITS  
& MUSEUM



TRADER JOE'S



RÉPUBLIQUE

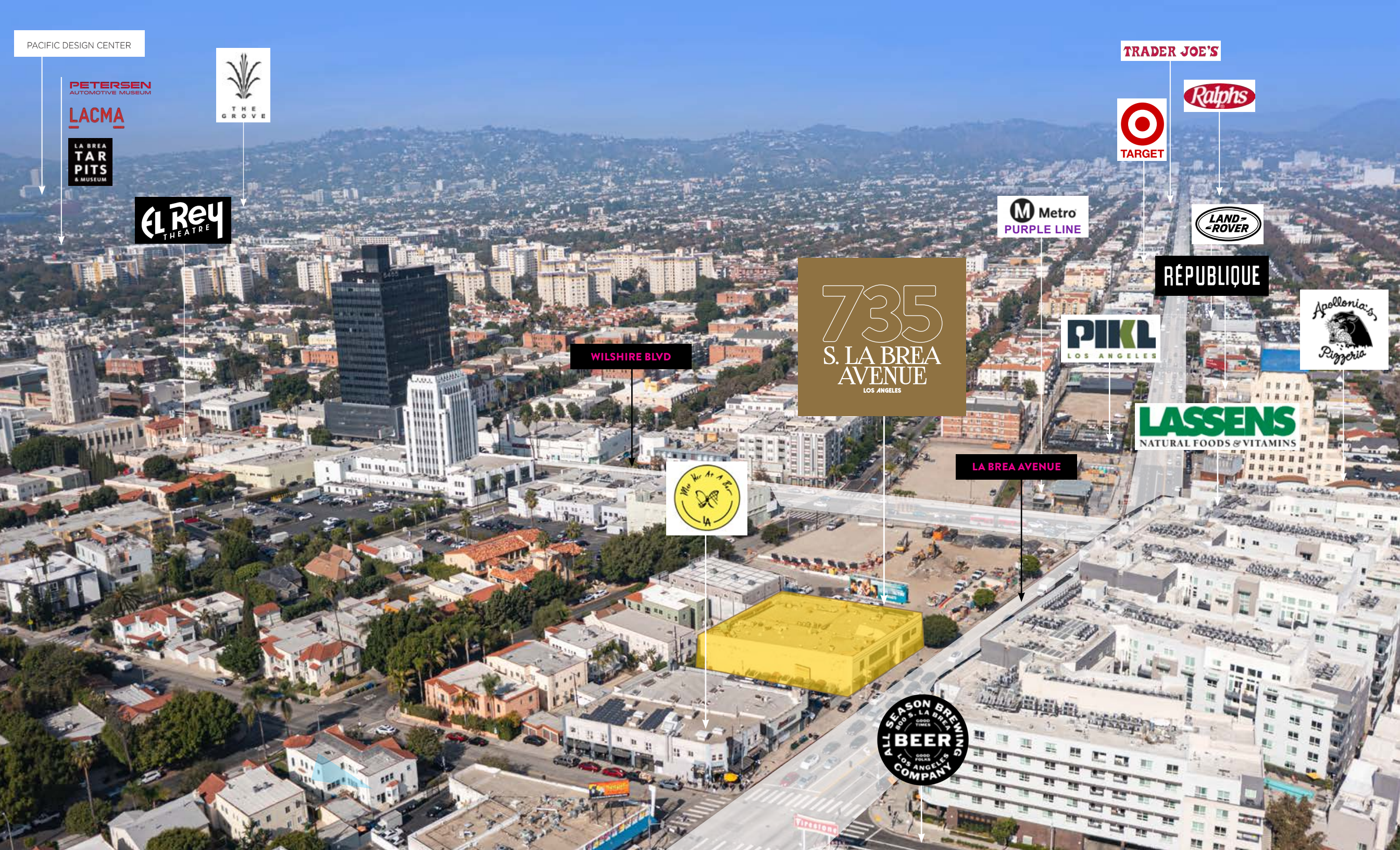


735  
S. LA BREA  
AVENUE  
LOS ANGELES

WILSHIRE BLVD

LA BREA AVENUE

LASSENS  
NATURAL FOODS & VITAMINS



# HIGHLIGHTS

## Prime La Brea Corridor

Excellent location between Wilshire and Olympic Boulevard, surrounded by some of LA's trendiest retail, dining, and creative experiences.

## Flagship / HQ Opportunity

The 2-story property is positioned to be a hub for brands, tenants, or operators looking to create a flagship destination in the heart of LA.

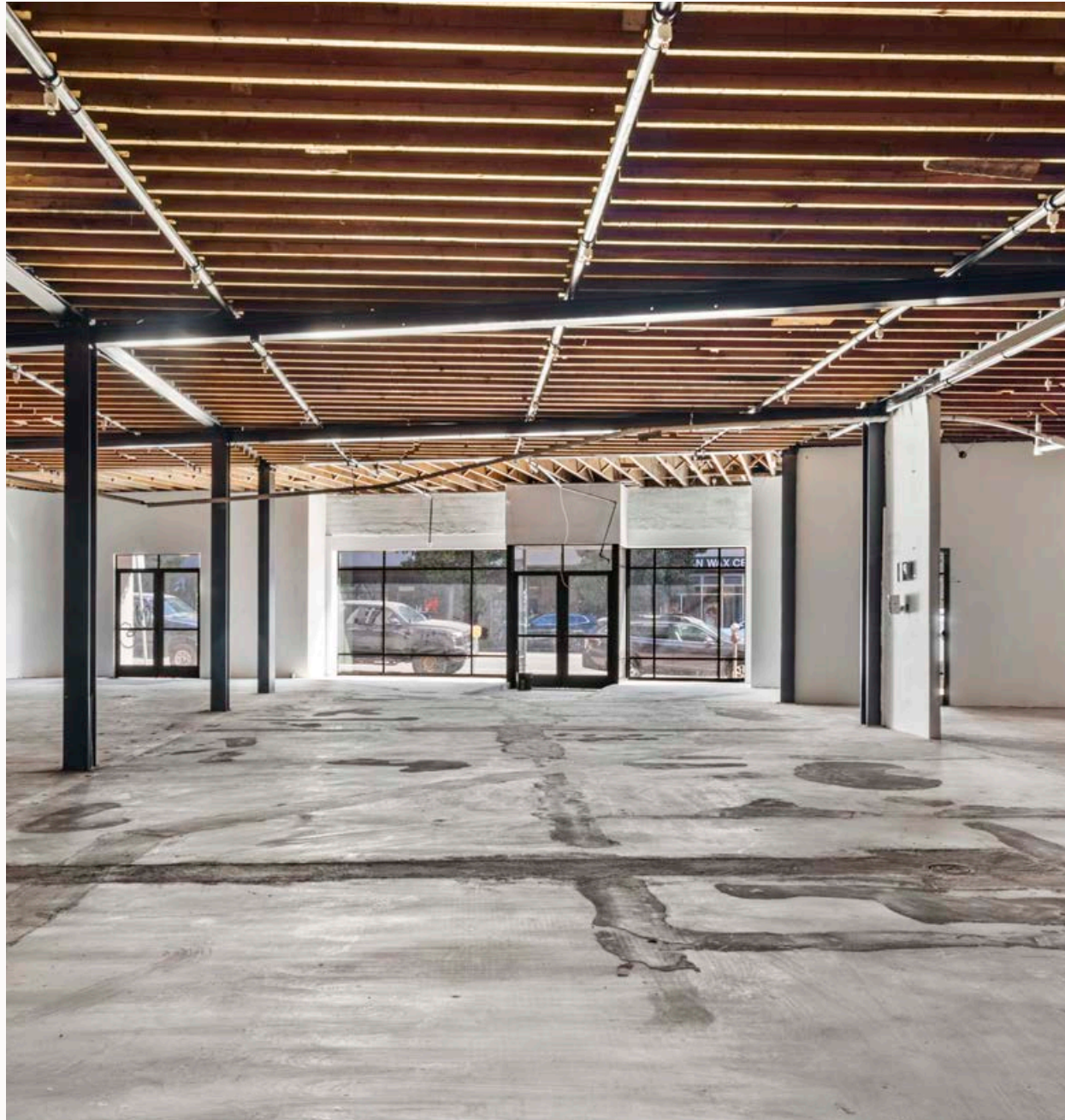
## Versatile Zoning (C2)

General zoning allows a wide range of uses including retail, fitness, food & beverage, studio, or office.

## Billboard Income

Additional income generator with high visibility along La Brea Avenue





## High-Visibility Frontage

Exceptional exposure along one of LA's most trafficked north-south thoroughfares with strong daily vehicle and pedestrian counts.

## Architecturally Distinct Building

Art Deco influenced asset with modern lines, floor-to-ceiling windows, and flexible open layouts ideal for showroom, retail, or creative office use.

## Strong Demographics

Surrounded by some of the most talked about pockets in Los Angeles including the Sycamore District, Miracle Mile, media studios, galleries, and design showrooms and within a mile radius of affluent neighborhoods such as Hancock Park, Beverly Grove, and Carthay Square

## Future Transit-Oriented Destination

Excellent proximity to commuter options including the brand new Metro Purple Line Extension, making La Brea a future transit-oriented destination.



# BOW TRUSS

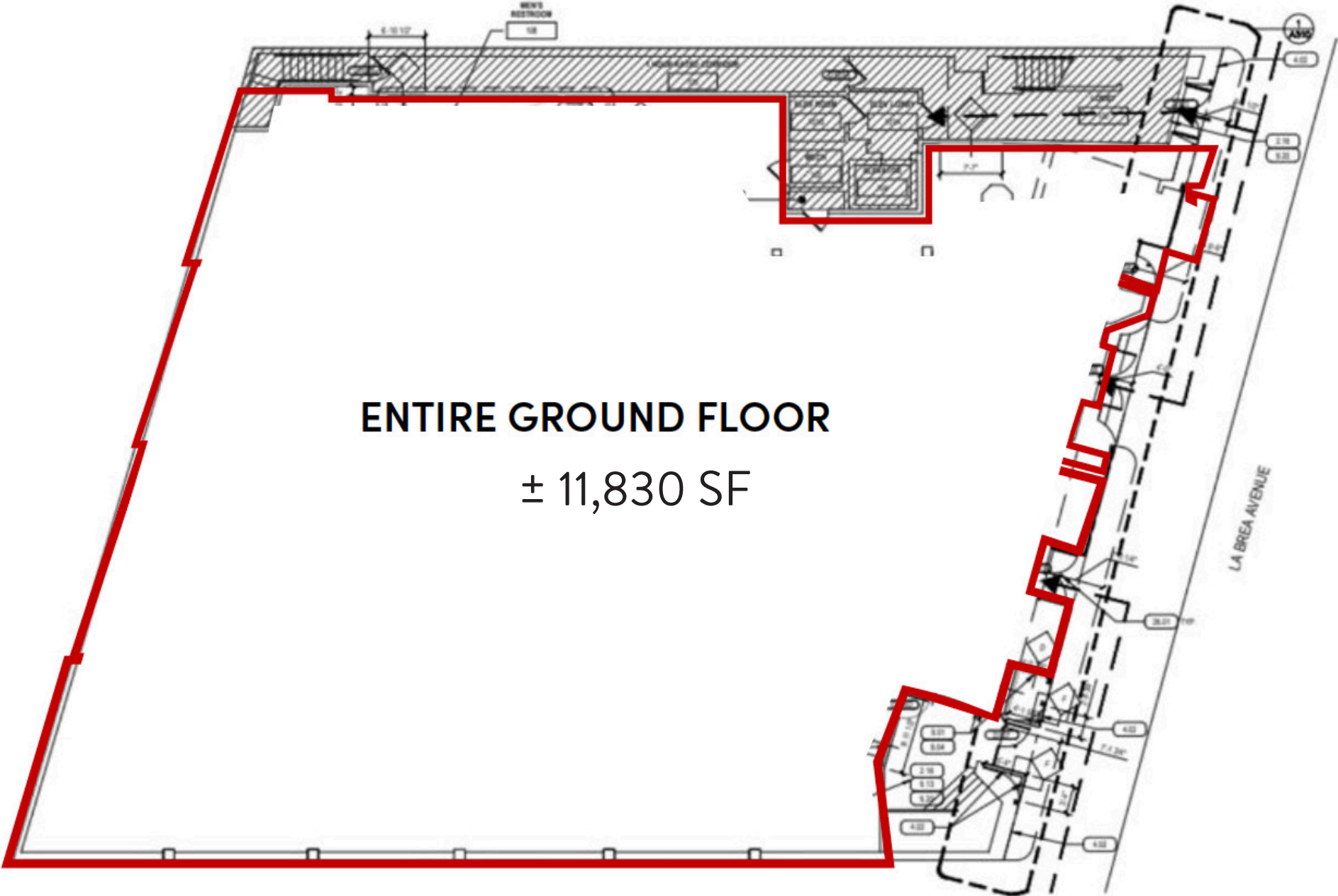
STRIKING ARCHITECTURE WITH AUTHENTIC ART DECO DETAILING, AND UNMATCHED FRONTAGE, THIS DESIGN-FORWARD ASSET OFFERS LIMITLESS POSSIBILITIES FOR EXPERIENTIAL RETAIL, SHOWROOM, OR CREATIVE USE.





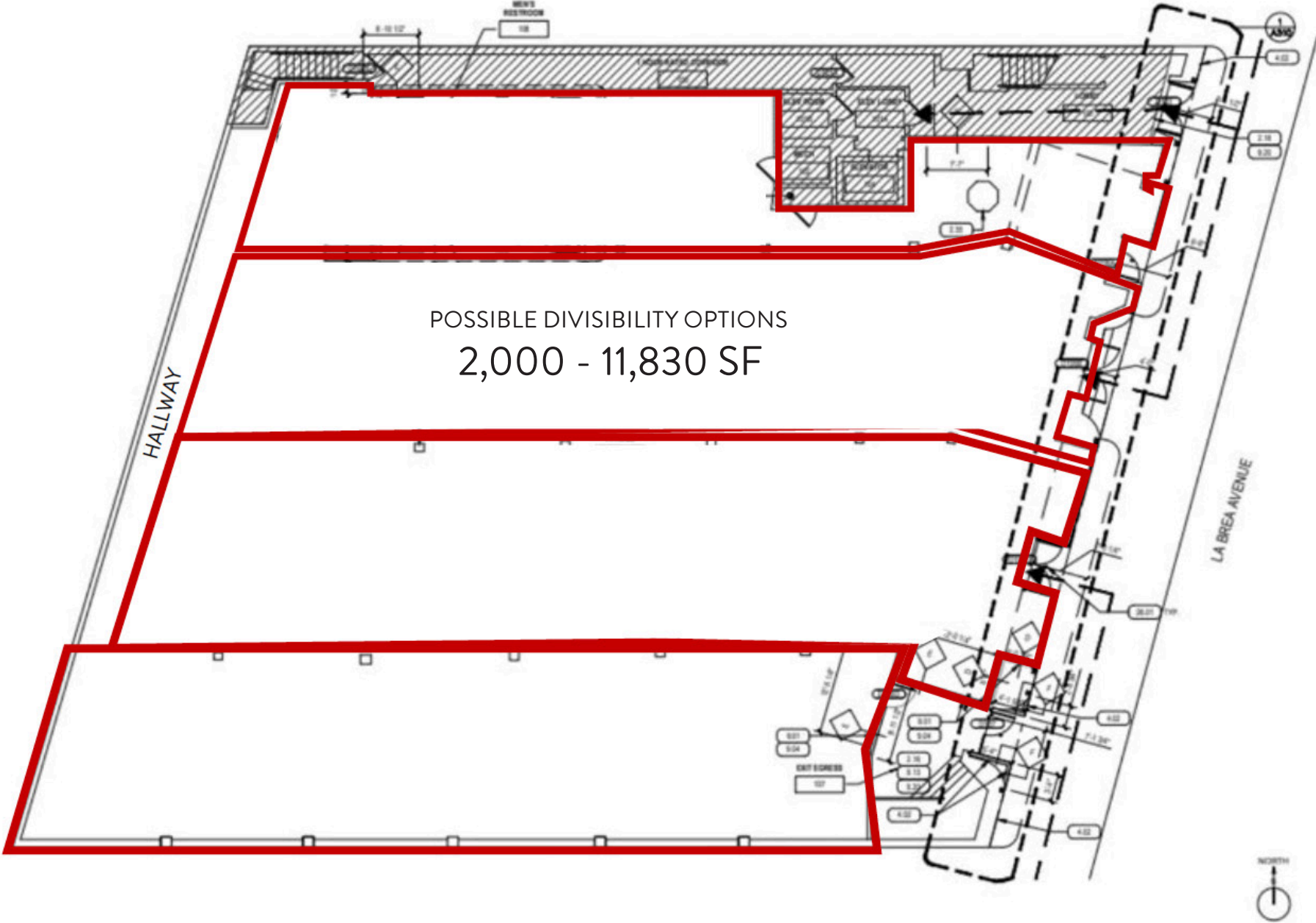
# FLOOR PLANS

GROUND LEVEL - FULL PLAN

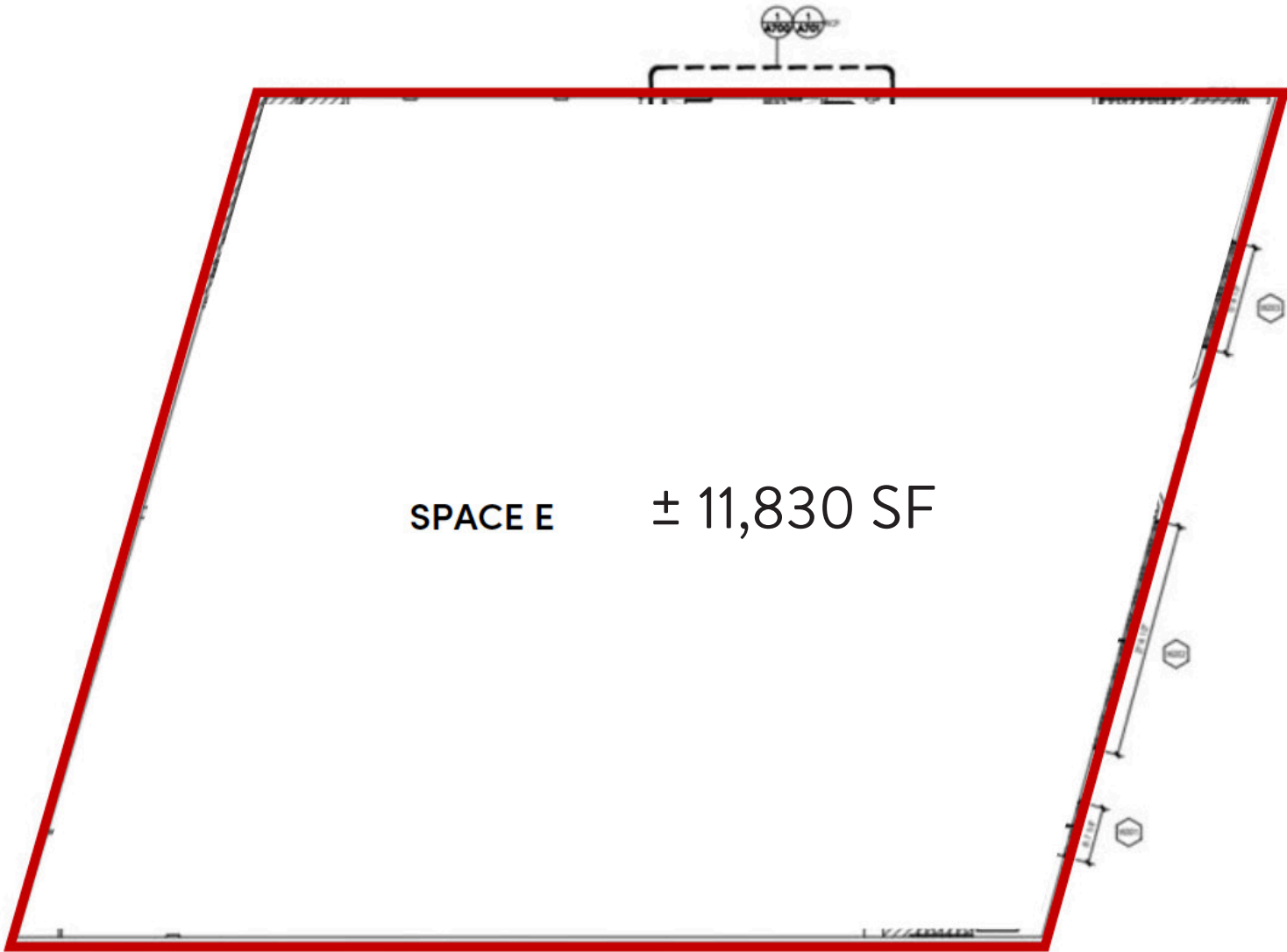


**ENTIRE GROUND FLOOR**  
 $\pm 11,830$  SF

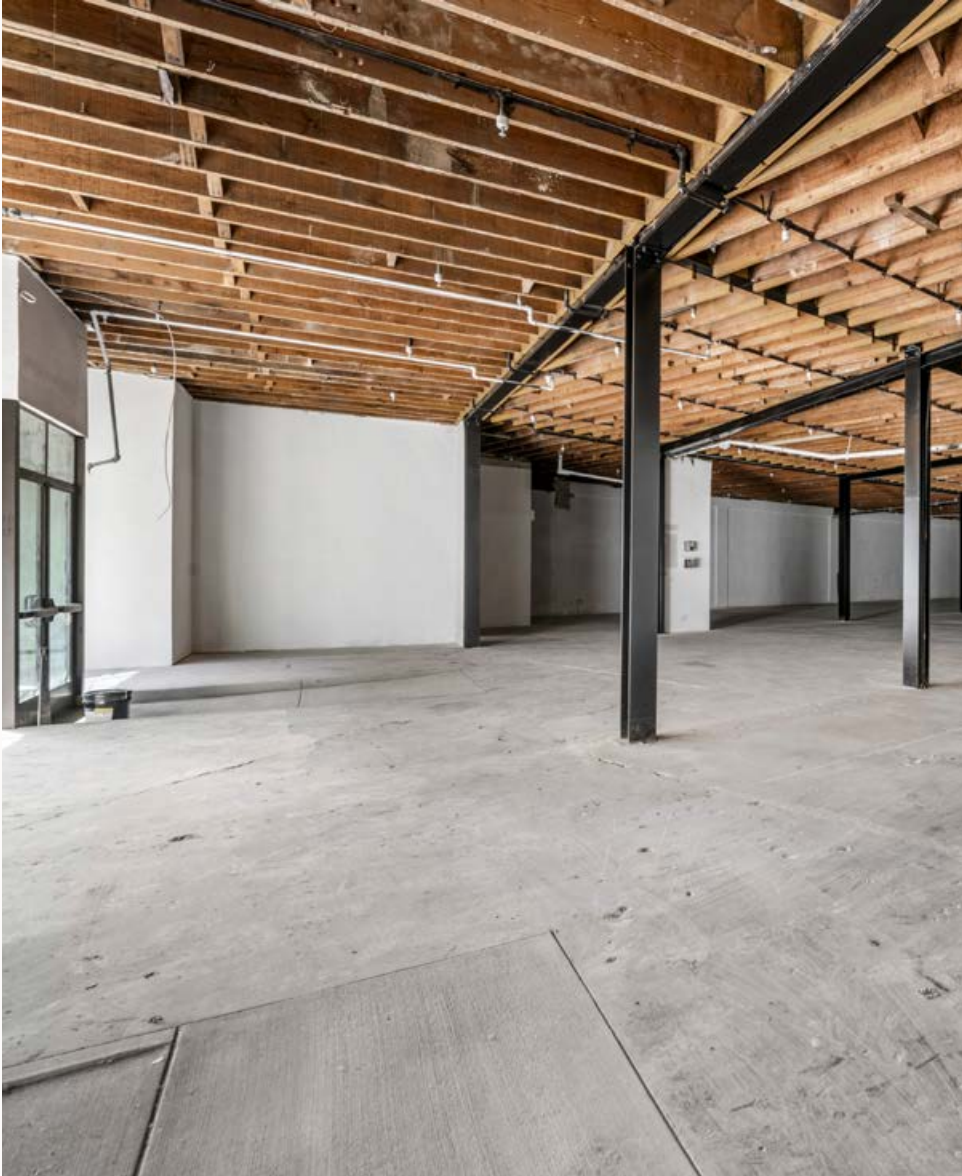
GROUND LEVEL - DIVISIBLE PLAN



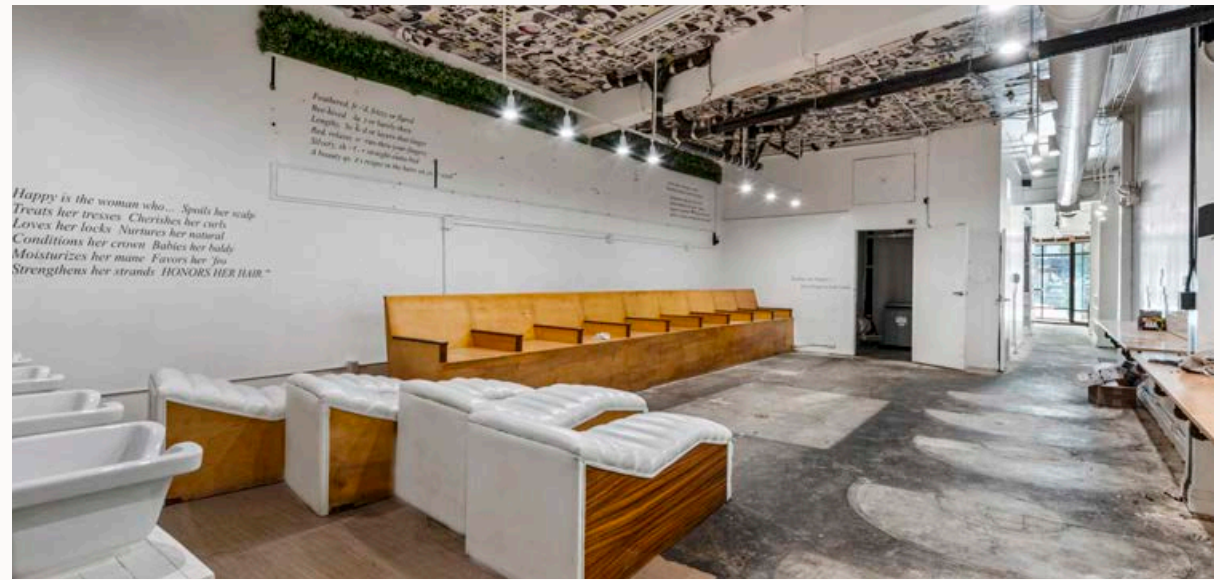
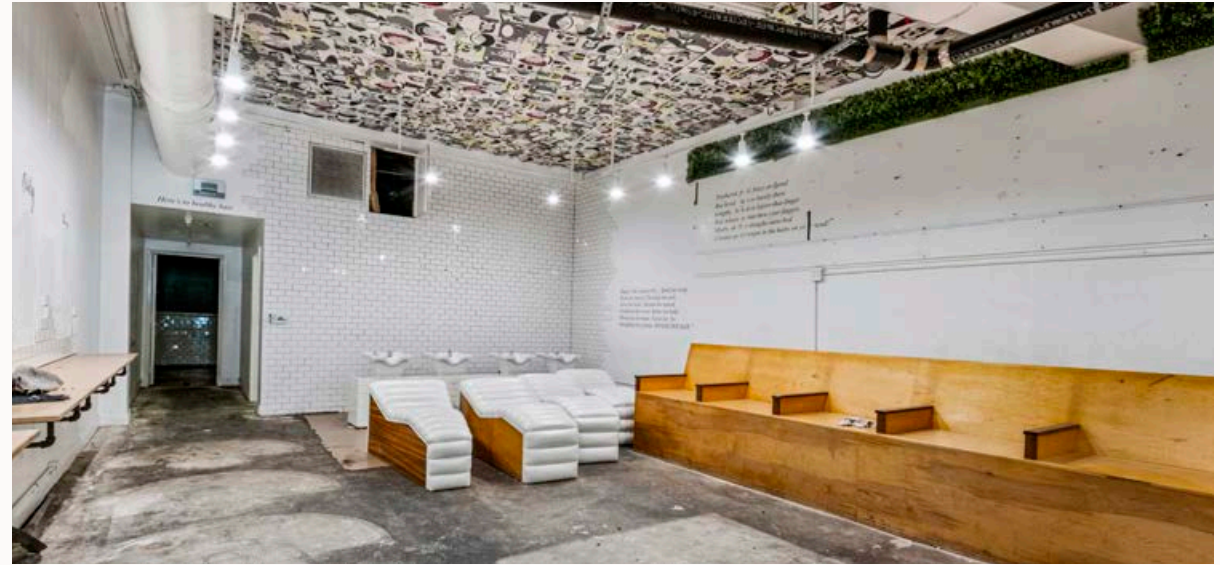
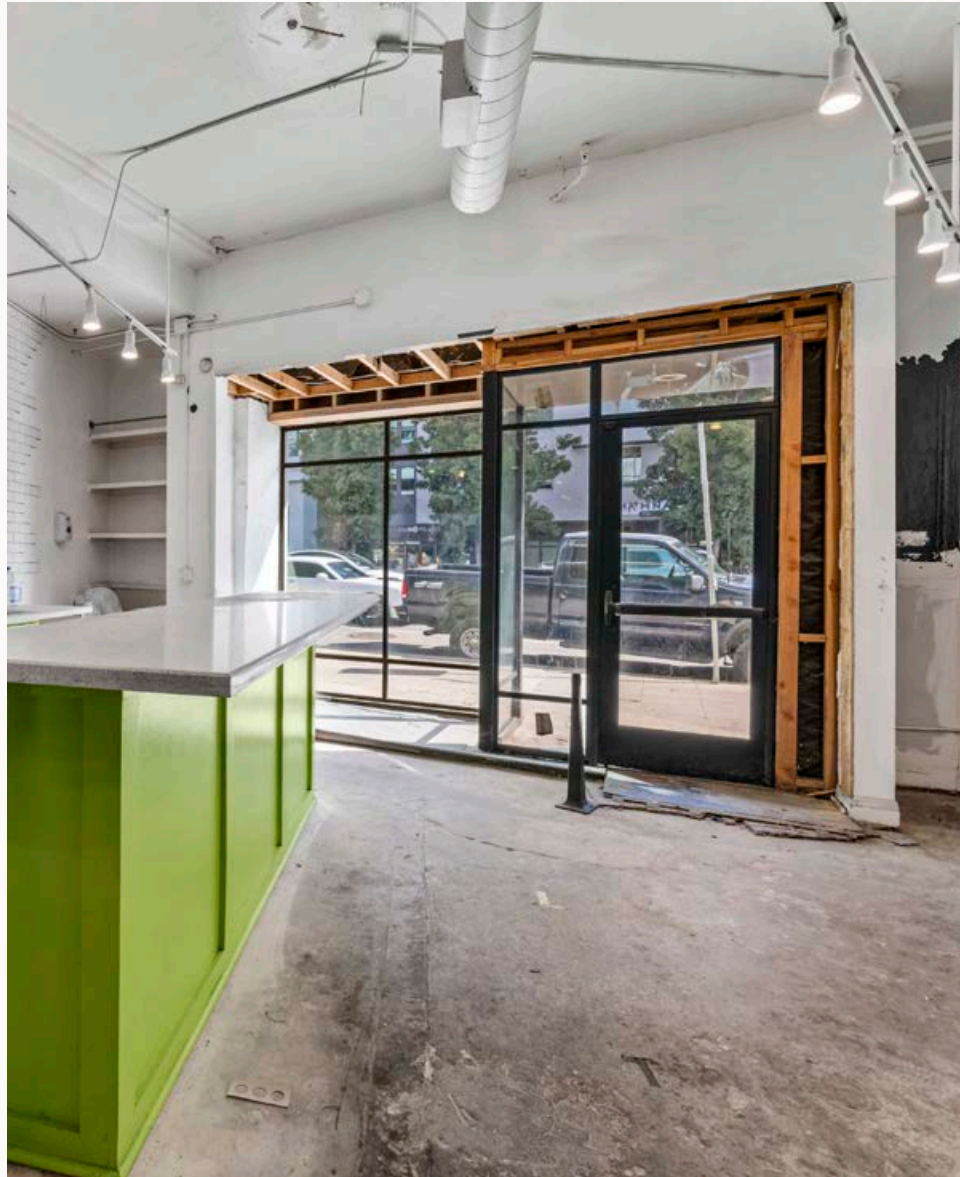
UPPER LEVEL [2ND FLOOR]- FULL PLAN



GROUND FLOOR



RETAIL [FORMER SALON]



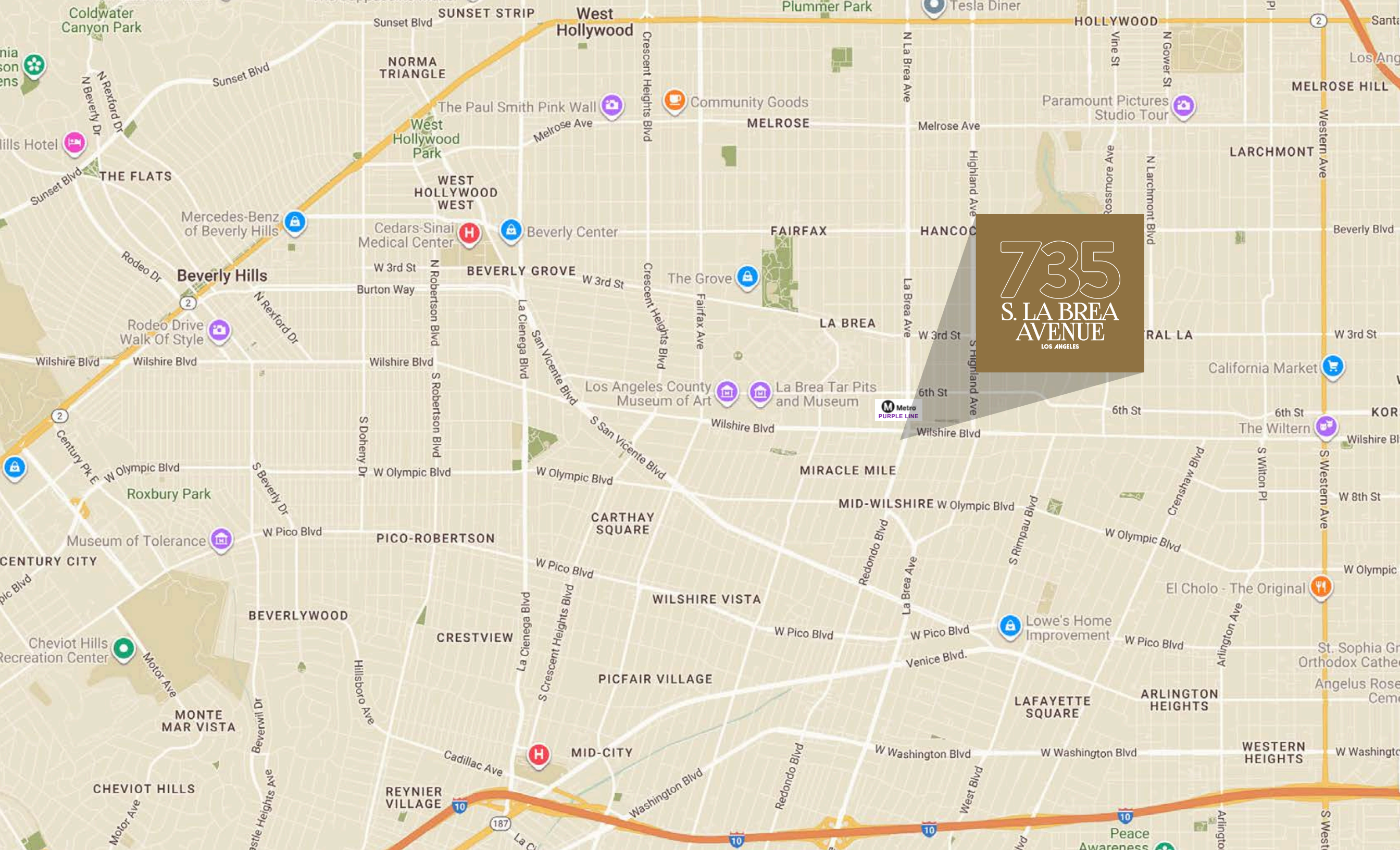
UPPER FLOOR



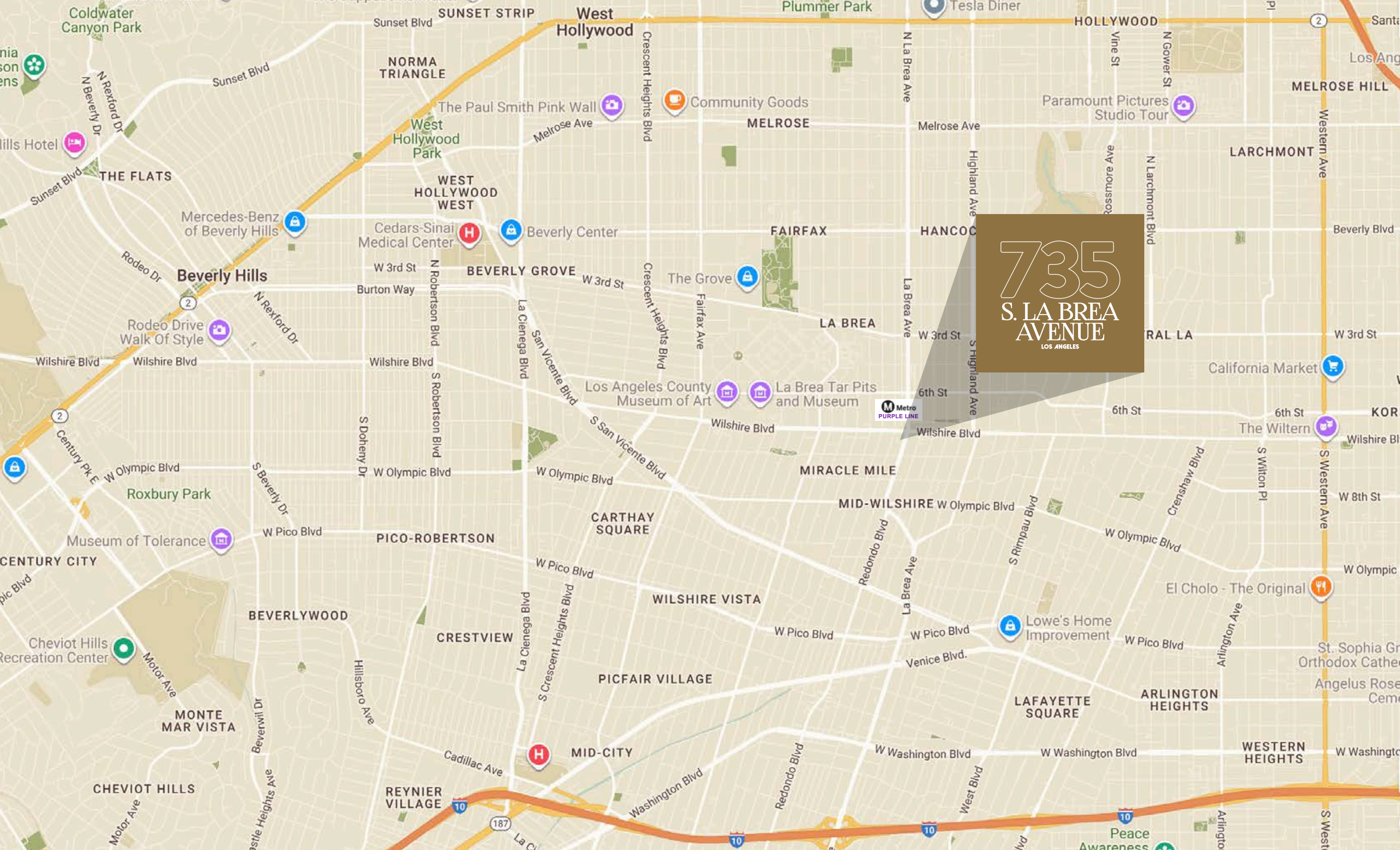
# NEIGHBORS



REPUBLIQUE. ALL SEASONS BREWERY.  
MET HER AT A BAR. POTATO CHIPS DELI.  
LASSENSGOURMETMARKET. APOLLONIAS  
PIZZA. PETERSON AUTOMOTIVE MUSEUM.  
LACMA. TRADER JOES. PIKLLOS ANGELES.  
LAND ROVER. TREJOS TACOS. MET HIM AT  
A BAR. HER THAI. ROJI BAKERY. EINSTEIN  
BROS BAGEL. FIVE GUYS. LA BREA TAR  
PITS. ANDRES. COFFEE BEAN & TEA LEAF.



**735**  
**S. LA BREA AVENUE**  
LOS ANGELES



735  
S. LA BREA  
AVENUE  
LOS ANGELES



**735**  
**S. LA BREA**  
**AVENUE**  
LOS ANGELES



**JAKE ZACUTO**

Managing Director

310.469.9012

[jake@zacutogroup.com](mailto:jake@zacutogroup.com)

DRE #01377441

**LEOR BINSHTOCK**

Executive Vice President

310.469.9014

[leor@zacutogroup.com](mailto:leor@zacutogroup.com)

DRE #01773798

**JOHN LOGAN**

Associate Vice President

931.561.9561

[john@zacutogroup.com](mailto:john@zacutogroup.com)

DRE# 02161147

*No warranty, express or implied, is made as to the accuracy of the information contained herein. This information is submitted subject to errors, omissions, change of price, rental or other conditions, withdrawal without notice. All parties who receive this material should not rely on it, but should use it as a starting point of analysis, and should independently confirm the accuracy of the information contained herein through a due diligence review of the books, records, files and documents that constitute reliable sources of the information described herein. Logos and images are for identification purposes only and may be trademarks of their respective companies. All terms provided are approximate. 5/2026*