

# FOR LEASE

## 9017 RED BRANCH ROAD

Columbia, Maryland 21045



### PROPERTY INFORMATION

**Availability:** 1st Floor 2,150-8,200 SF  
2nd Floor 5,275 SF

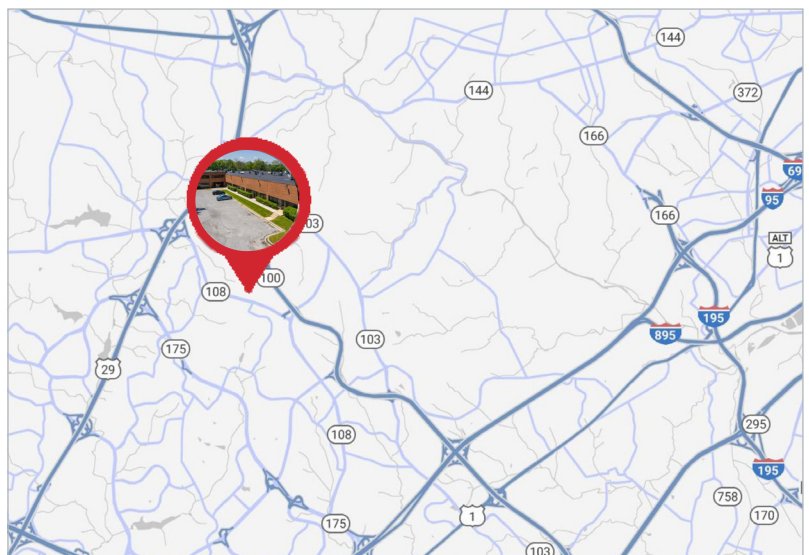
**Location:** Located in the heart of Howard County with easy access to major highways.

**Superior Amenities:** Dunkin, Royal Farms Giant, PNC Bank, Bank of America, Wells Fargo, Subway, and Wendy's.

**Building Renovations Coming Soon:** Upgraded lobby area, new security system, restriping and resealing the parking lot, monument signage on Red Branch Rd.

### PROPERTY HIGHLIGHTS

- Under New Ownership!
- Immediate access to Route 100, 29 & I-95
- Oakland Ridge Business Park



# NEWMARK

One East Pratt Street, Suite 805 Baltimore, MD 21202

[nmrk.com](http://nmrk.com)

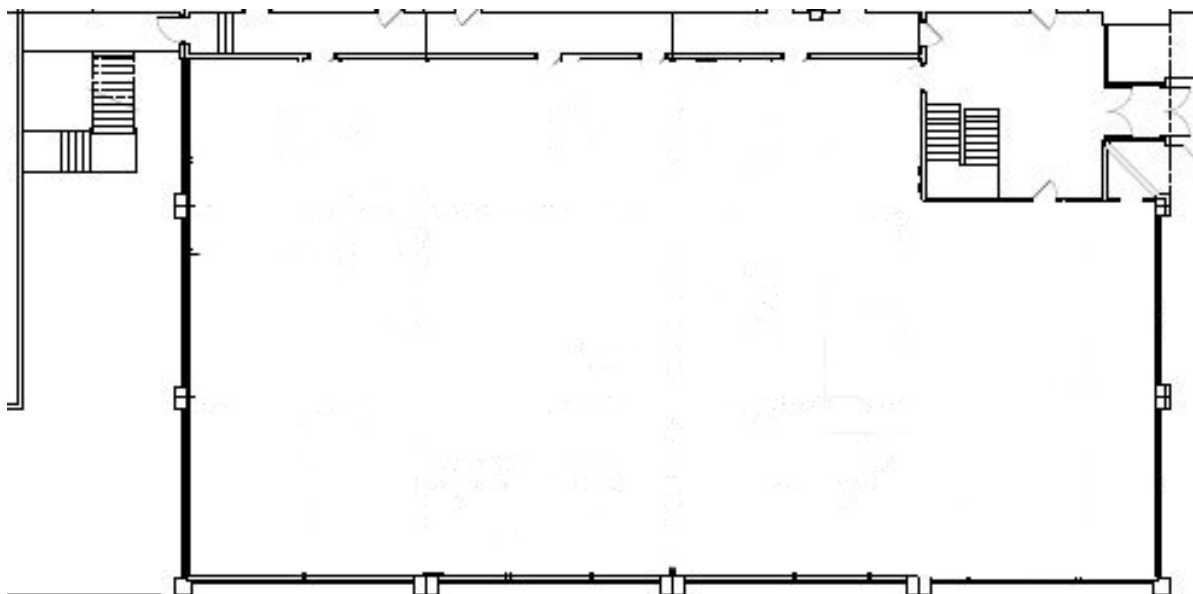
The information contained herein has been obtained from sources deemed reliable, but has not been verified and no guarantee, warranty or representation, either express or implied, is made with respect to such information. Terms of sale or lease and availability are subject to change or withdrawal without notice.

# FOR LEASE

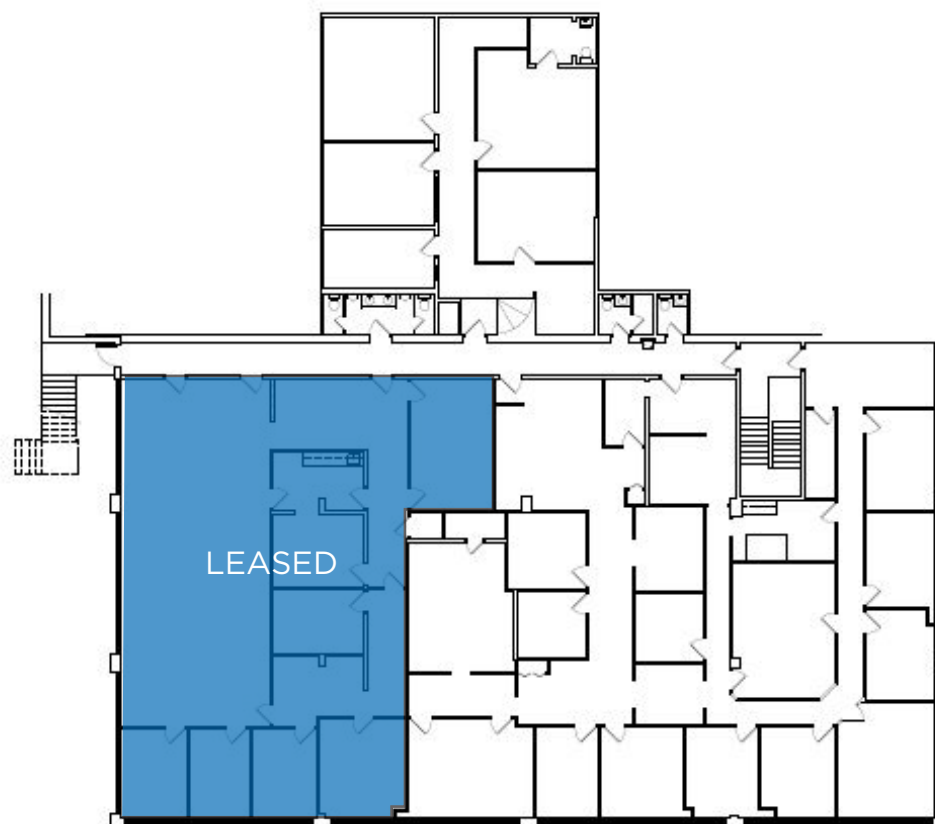
## 9017 RED BRANCH ROAD

Columbia, MD 21045

1st Floor **2,150-8,200 SF**



2nd Floor **5,275 SF**



### FOR LEASING INFORMATION:

Brian Kruger  
*Senior Managing Director*  
410.625.4211  
brian.kruger@nrmk.com

Thomas Hinder  
*Director*  
t 410.844.4010  
thomas.hinder@nrmk.com

Erik Evans  
*Associate*  
410.844.4003  
erik.evans@nrmk.com

# NEWMARK

One East Pratt Street, Suite 805 Baltimore, MD 21202

[nrmk.com](http://nrmk.com)

The information contained herein has been obtained from sources deemed reliable, but has not been verified and no guarantee, warranty or representation, either express or implied, is made with respect to such information. Terms of sale or lease and availability are subject to change or withdrawal without notice.