



Boulevard Commercial

REAL ESTATE SERVICES

AVAILABLE
163 +/- ACRES

3101 NW 128th Street Kansas City, MO

Prime Development Site Near Hyperscale Data Center Hubs



816.313.8228

923 W. 24th St
Kansas City, MO 64108

boulevardcommercial.com

chuck@boulevardcommercial.com



Boulevard Commercial

REAL ESTATE SERVICES

AVAILABLE
163 +/- ACRES

3101 NW 128th Street Kansas City, MO

SITE

Property Features

- Data Center Shovel Ready
- EVERGY Ready-Serve 100MW+
- Sale or Joint Venture
- Concept shows over 1M SF with Site Balance
- Adjacent to Brand New Substation
- 16" Water Main & Sanitary Sewer On-site
- Contiguous to Meta and Google Technology Parks
- All Utilities Available
- Call Broker for Pricing

816.313.8228

923 W. 24th St
Kansas City, MO 64108

boulevardcommercial.com

chuck@boulevardcommercial.com

Prime Development Site Near Hyperscale Data Center Hubs




Demographics	1 Miles	3 Miles	5 Miles
Population	4,215	22.5k	65.1k
Median Age	42	38	37
AVG HH Income	\$87.3	\$92.5	\$92.2

[Map View](#)

[Due Diligence](#)

This information has been obtained from sources believed reliable, but has not been verified for accuracy or completeness. You should conduct a careful, independent investigation of the property and verify all information. Any reliance on this information is solely at your own risk.

 816.313.8228

 923 W. 24th St
Kansas City, MO 64108

 boulevardcommercial.com

 chuck@boulevardcommercial.com



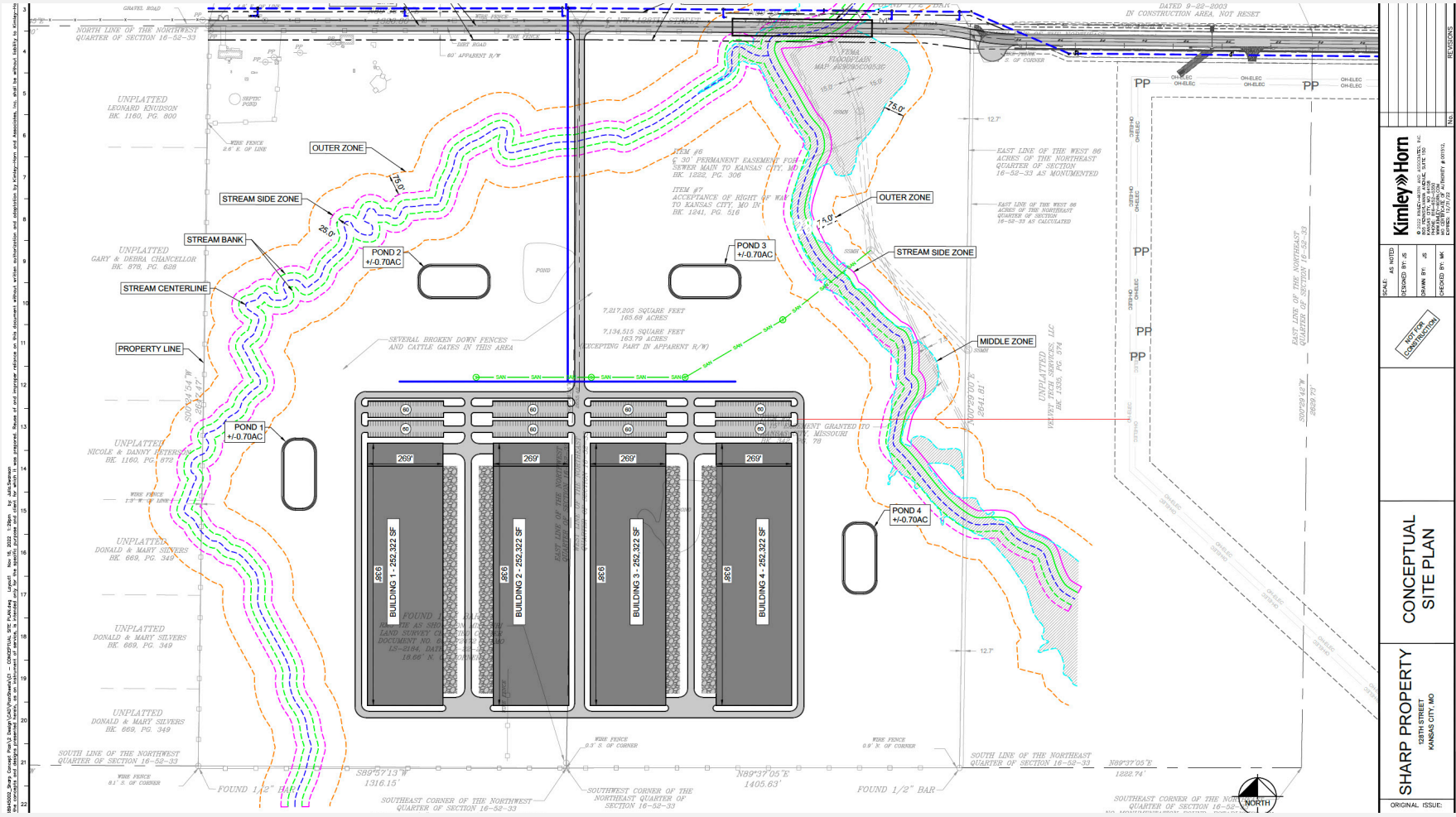
Boulevard
Commercial

REAL ESTATE SERVICES

AVAILABLE
163 +/- ACRES

3101 NW 128th Street Kansas City, MO

Conceptual Site Plan



Kimley-Horn	
SCALE: AS SHOWN	DATE: 11/27/2023
DRAWN BY: JK	CHECKED BY: JK
UNDER CONSTRUCTION	
CONCEPTUAL SITE PLAN	
SHARP PROPERTY	
3101 NW 128th Street Kansas City, MO	
ORIGINAL ISSUE:	

816.313.8228

923 W. 24th St
Kansas City, MO 64108

boulevardcommercial.com

chuck@boulevardcommercial.com