

For Lease

# Office Space with Parking

1,969 - 3,324 SF | \$29.75 / SF



## 605 East Robinson Street

Orlando, Florida 32801

### Property Highlights

- 83,139± SF, 7-story office building
- Spaces are already built out and ready to go
- Across the street from Lake Eola Park
- Walking distance to Orange County Courthouse and Orlando City Hall
- Free parking available - rare for Downtown Orlando
- On-site management
- Visitors parking area
- Directly on Lymmo Orange Route (Magnolia Ave)
- Minutes from I-4; Easy access to entire Metro Orlando area

### AVAILABLE SPACES

Space	Lease Rate	Size (SF)
Suite 135	\$29.75 SF/yr	1,969
Suite 330	\$29.75 SF/yr	3,324
Suite 410	\$29.75 SF/yr	2,314
Suite 420	\$29.75 SF/yr	2,720



For more information

**Jeffrey Bloom, CCIM**

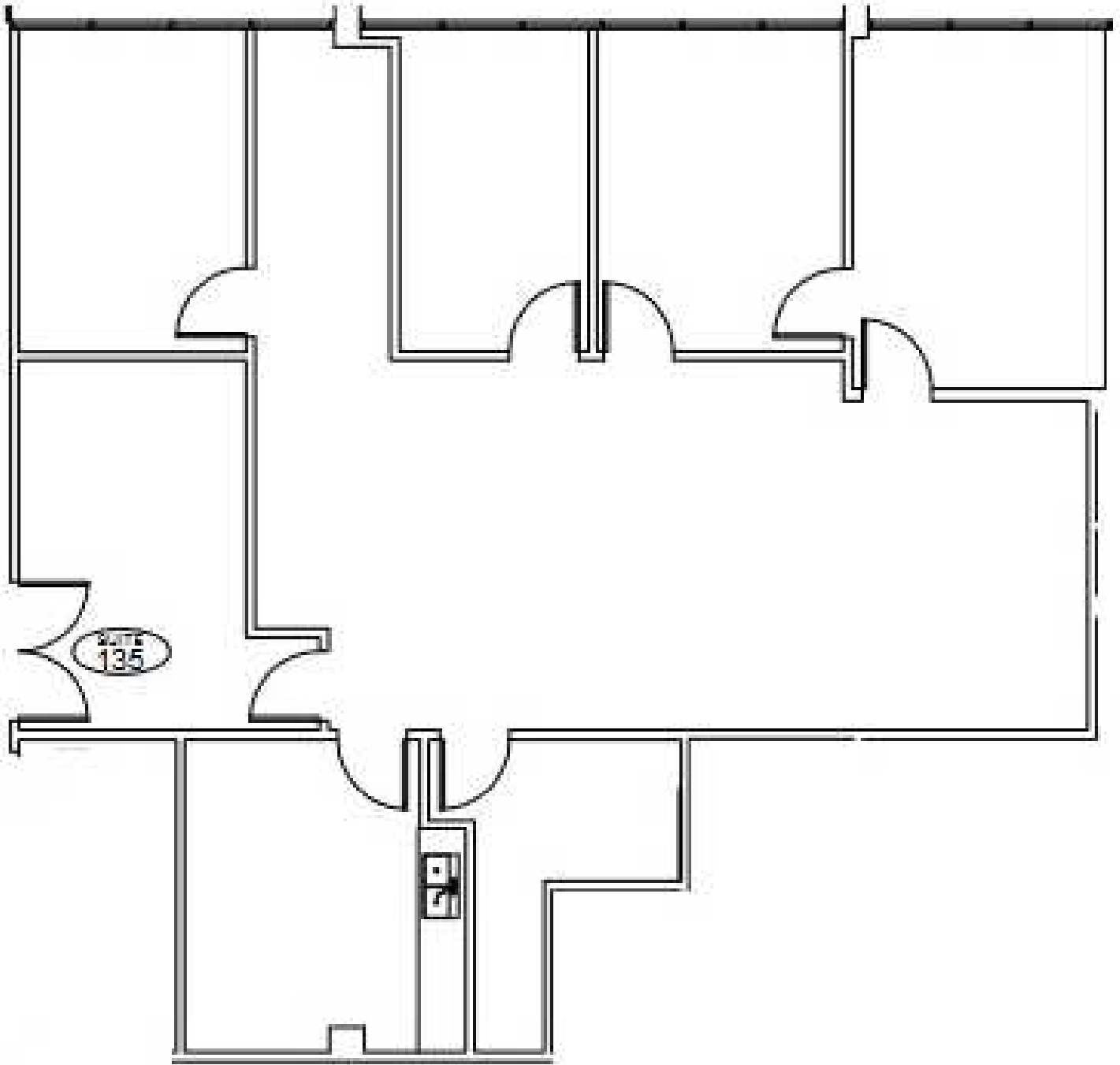
O: 407 949 0709

[jbloom@realvest.com](mailto:jbloom@realvest.com)

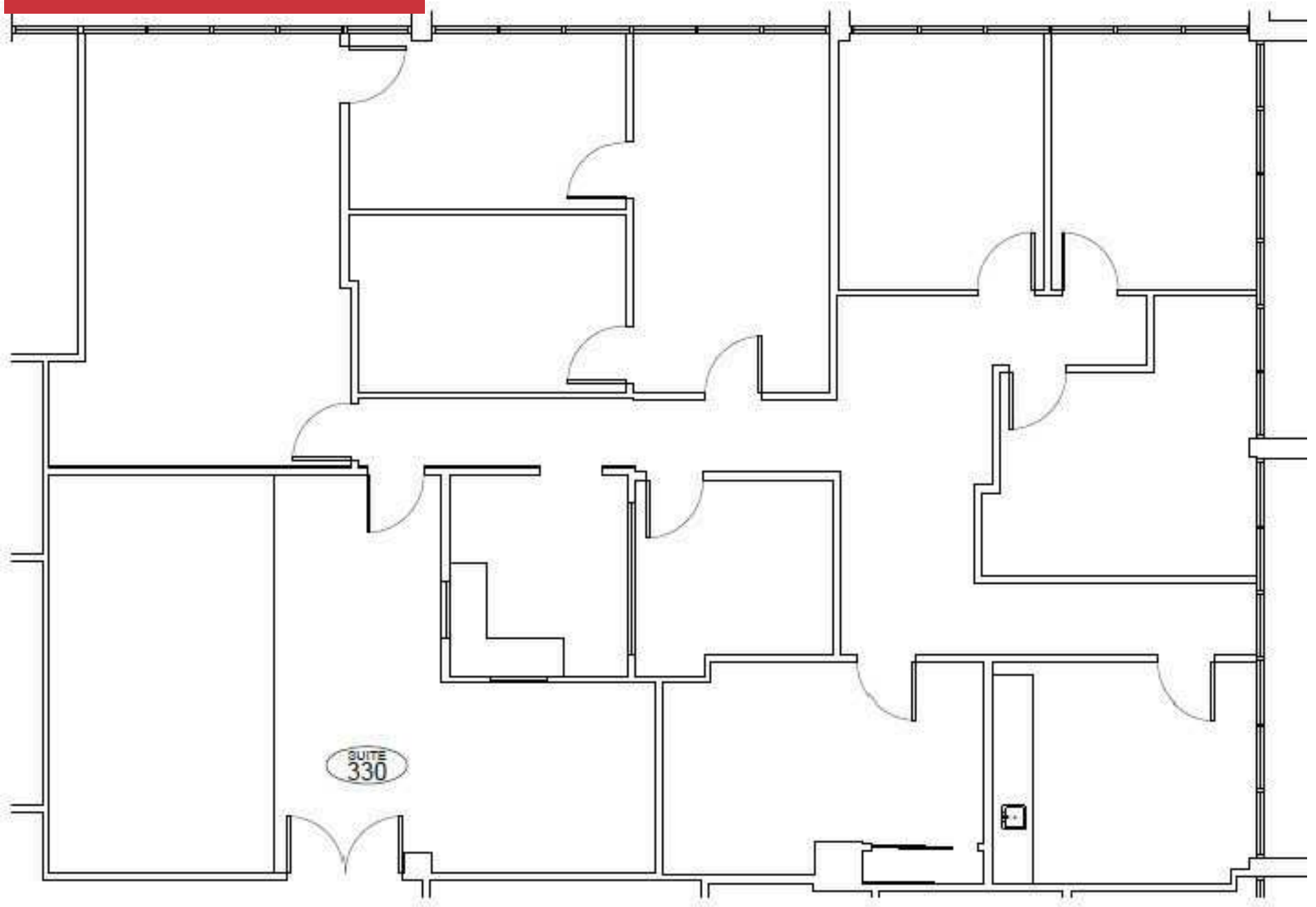
# Great Downtown Location



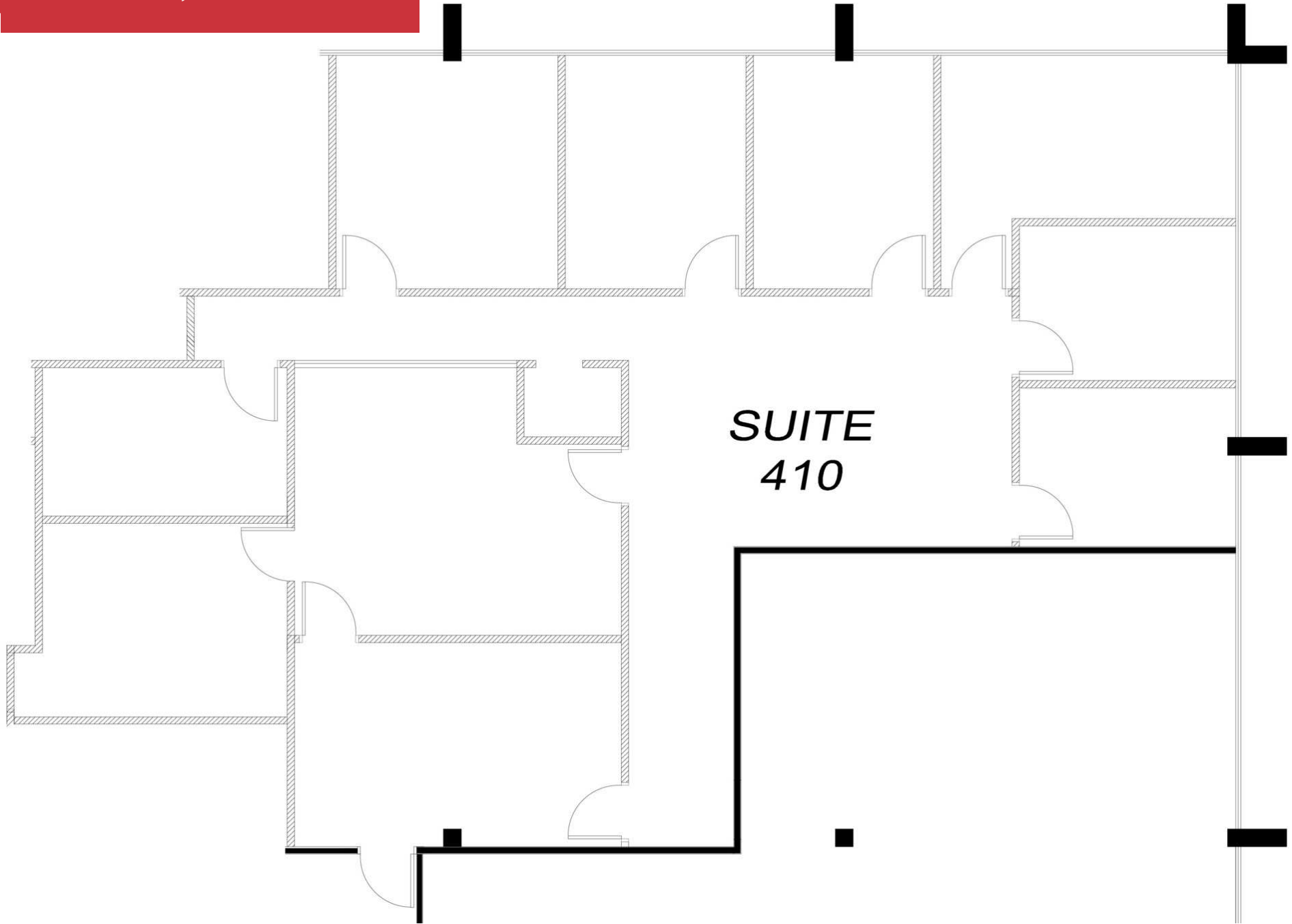
# Suite 135 - 1,969± SF



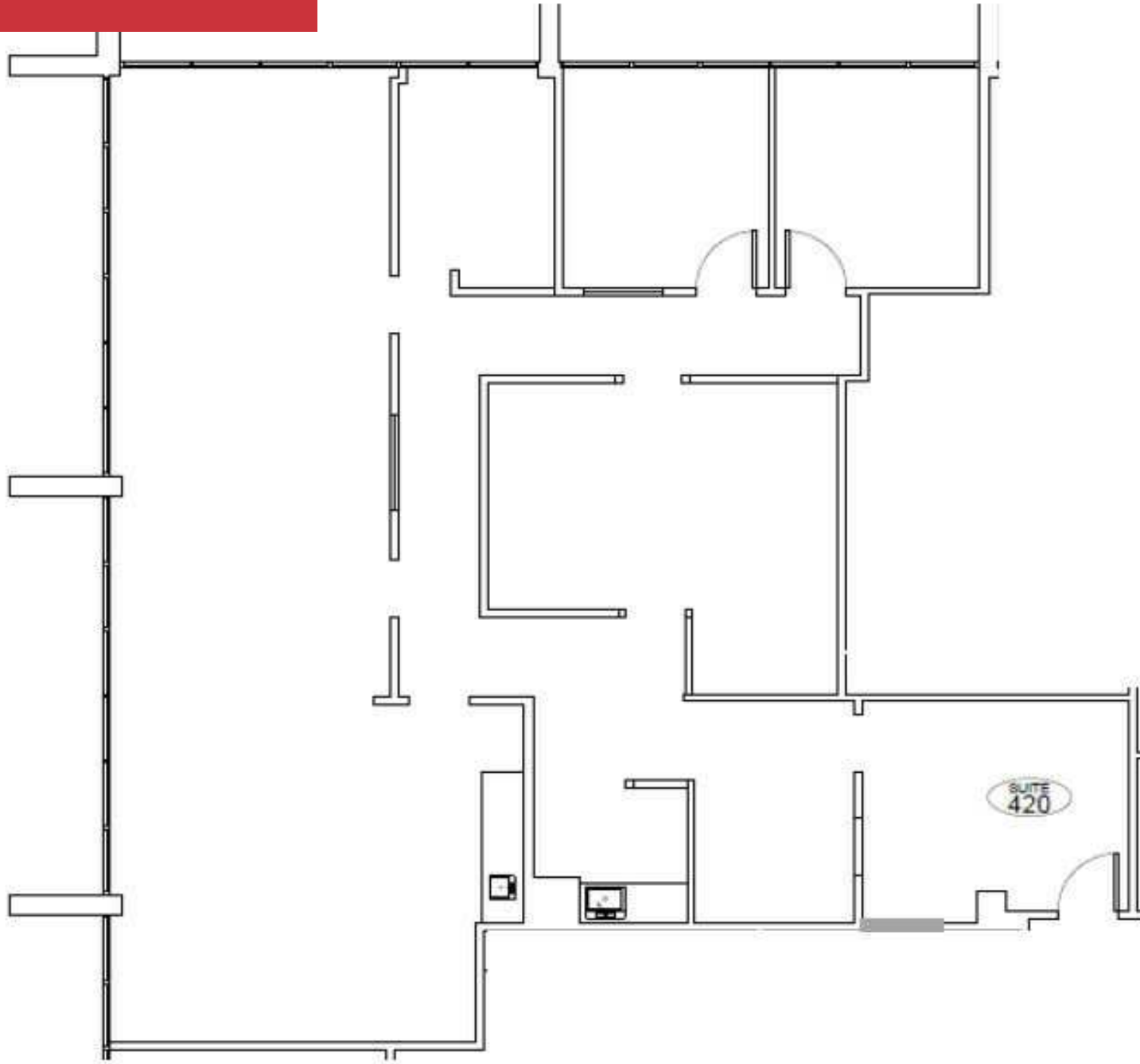
Suite 330 - 3,324± SF



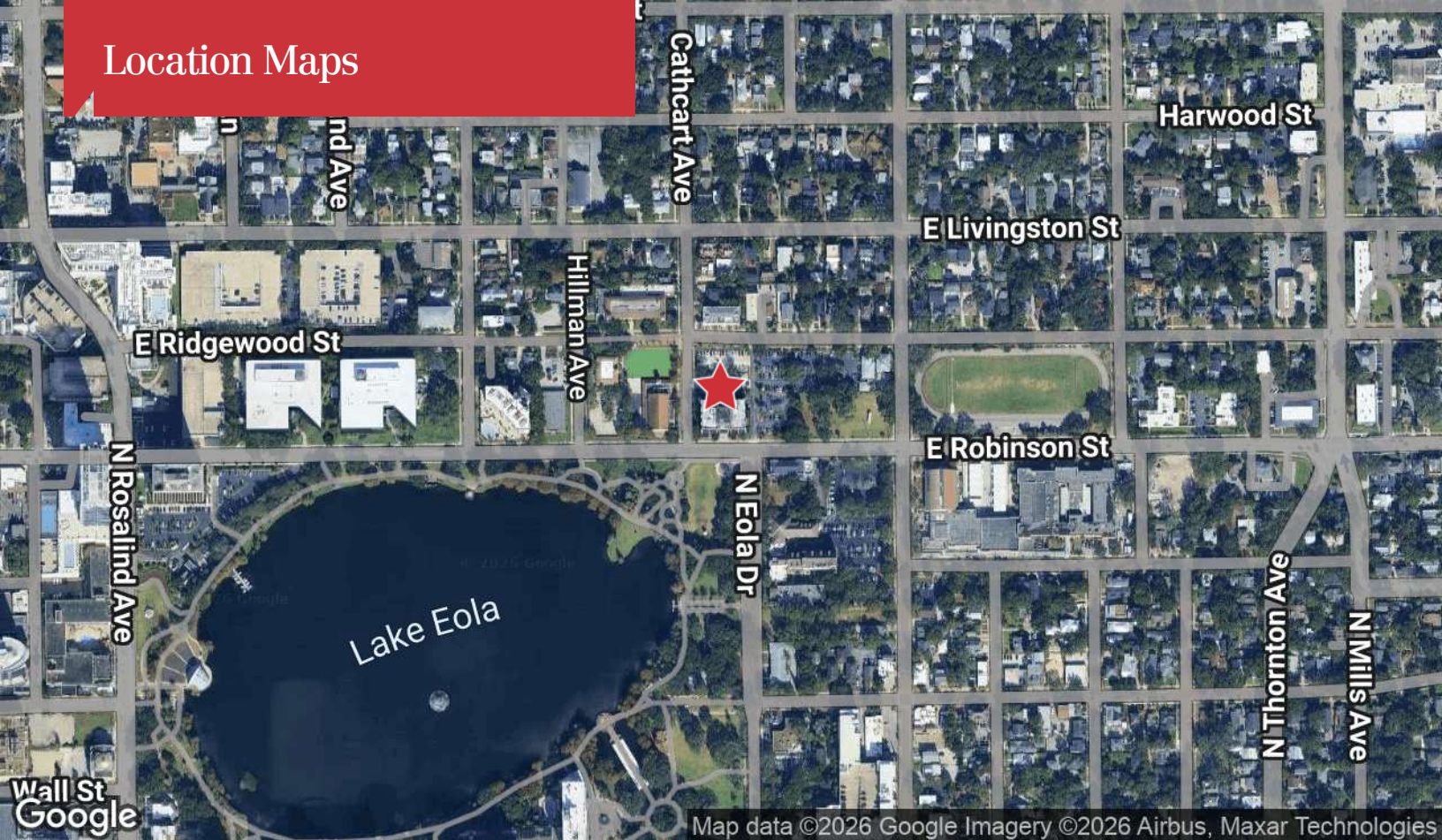
Suite 410 - 2,314± SF



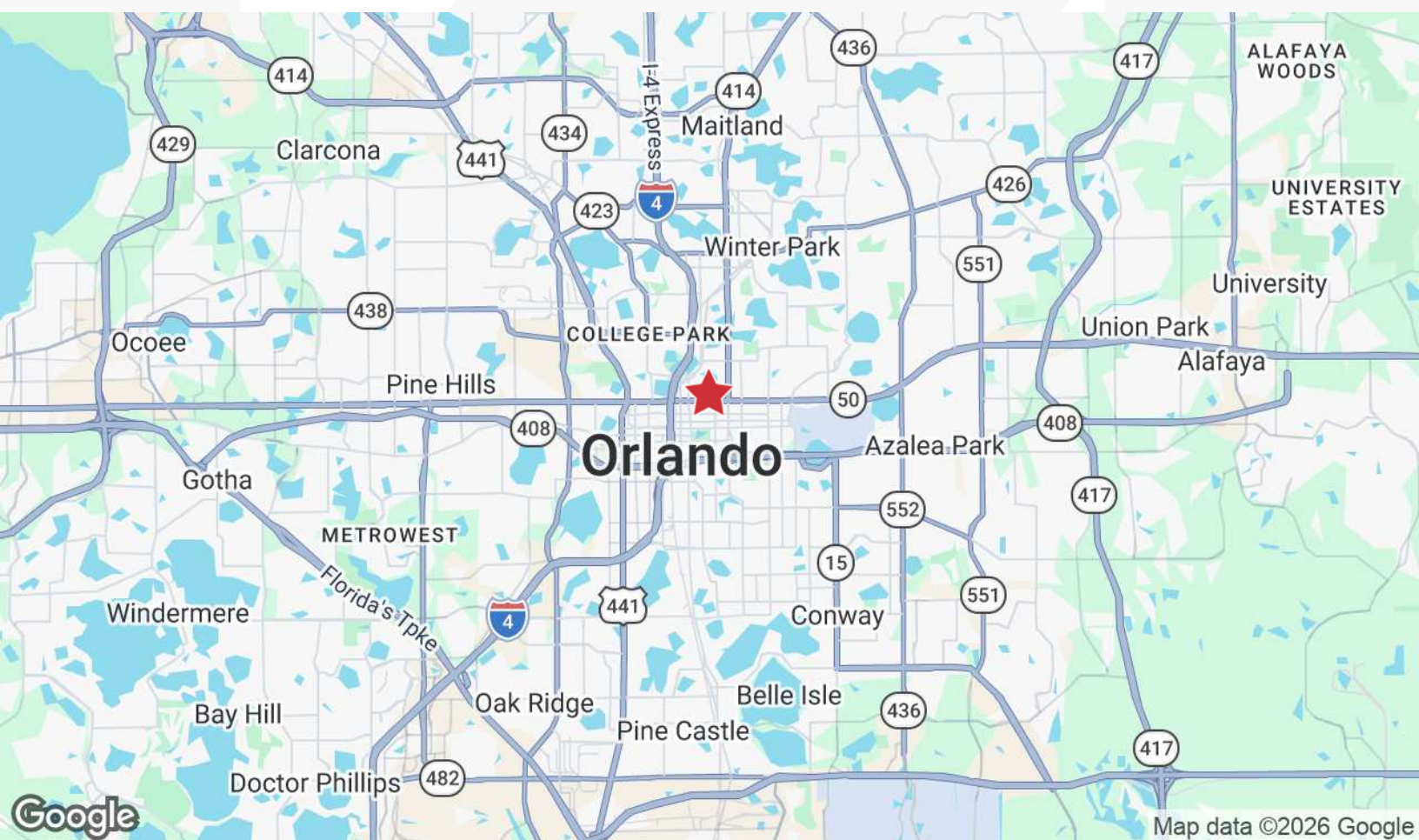
Suite 420 - 2,720± SF



# Location Maps

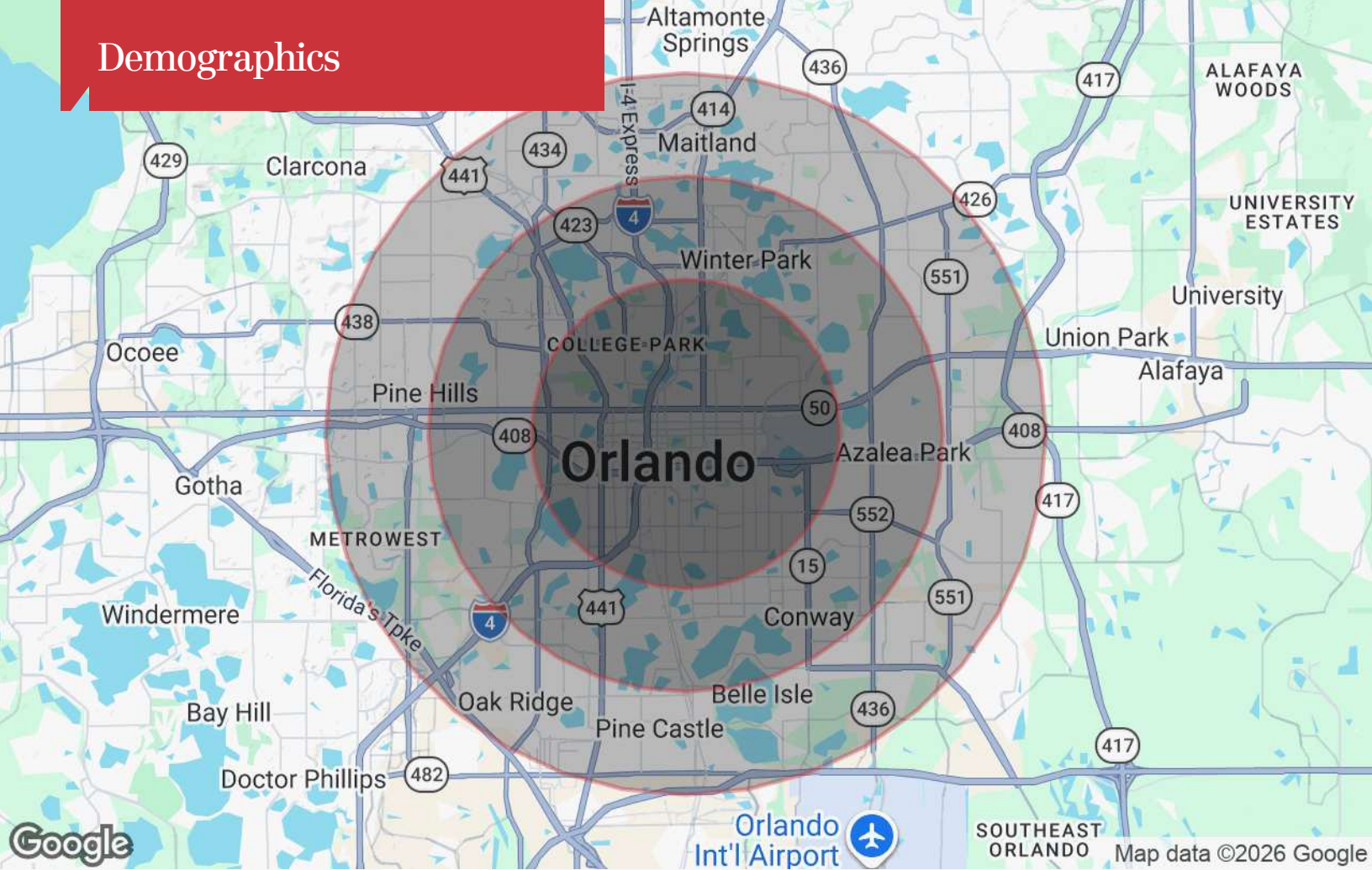


Map data ©2026 Google Imagery ©2026 Airbus, Maxar Technologies



Map data ©2026 Google

# Demographics



## Population

	3 Miles	5 Miles	7 Miles
TOTAL POPULATION	97,710	280,846	608,935
MEDIAN AGE	38.6	38.0	36.4
MEDIAN AGE (MALE)	38.2	36.6	35.1
MEDIAN AGE (FEMALE)	39.2	39.6	38.1

## Households & Income

	3 Miles	5 Miles	7 Miles
TOTAL HOUSEHOLDS	52,021	132,370	262,833
# OF PERSONS PER HH	1.9	2.1	2.3
AVERAGE HH INCOME	\$87,187	\$73,394	\$65,656
AVERAGE HOUSE VALUE	\$289,697	\$252,220	\$209,573

\* Demographic data derived from 2020 ACS - US Census