

FOR LEASE

BUILDING TOP SIGNAGE AVAILABLE

1990 Westwood Boulevard

LOS ANGELES, CA 90025



Q2 2026 BROKER BONUS

\$2 PSF on 3 Year deals | \$3 PSF on 5 Year deals*

JEFFREY PICKETT
Executive Vice President

pickett@westmac.com
424.832.5306 direct
DRE#: 01828924
WESTMAC

JIM BURNAP
Executive Vice President

burnap@westmac.com
310.966.4385 direct
DRE#: 01020515
WESTMAC

DEAN HECK
Executive Vice President

dheck@beitler.com
310.721.1988 direct
DRE#: 00872647
BEITLER

WESTMAC
Commercial Brokerage Company

BEITLER
COMMERCIAL REALTY SERVICES

©2026 WESTMAC Commercial Brokerage Company. All Rights Reserved. WESTMAC Commercial Brokerage fully supports the principles of the Equal Opportunity Act. WESTMAC Commercial Brokerage Company and the WESTMAC Commercial Brokerage Company logo are registered service marks owned by WESTMAC Commercial Brokerage Company and may not be reproduced by any means or in any form whatsoever without written permission.

WESTMAC

WESTMAC Commercial Brokerage Company

1515 Sepulveda Boulevard, Los Angeles, CA 90025-3311 | www.westmac.com | Company DRE #01096973

FOR LEASE

1990 Westwood Boulevard

LOS ANGELES, CA 90025



PROPERTY FEATURES

- » Building signage available
- » New state-of-the-art security system
- » Numerous restaurants within walking distance
- » Secured parking
- » EV charging stations
- » Efficient building with low load factor
- » On-site management team
- » Outdoor tenant atrium lounge
- » On-site storage available
- » Easy access to I-10 and I-405 Freeways



WESTMAC

WESTMAC Commercial Brokerage Company

1515 Sepulveda Boulevard, Los Angeles, CA 90025-3311 | www.westmac.com | Company DRE #01096973

FOR LEASE

1990 Westwood Boulevard

LOS ANGELES, CA 90025



1990 Westwood is a centerpoint on the west side, located between Santa Monica Boulevard and Olympic Boulevard. Minutes from the 405 and 10 freeways

1990 Westwood provides easy access to Santa Monica, Beverly Hills, Culver City & Century City

©2026 WESTMAC Commercial Brokerage Company. All Rights Reserved. WESTMAC Commercial Brokerage fully supports the principles of the Equal Opportunity Act. WESTMAC Commercial Brokerage Company and the WESTMAC Commercial Brokerage Company logo are registered service marks owned by WESTMAC Commercial Brokerage Company and may not be reproduced by any means or in any form whatsoever without written permission.

WESTMAC

WESTMAC Commercial Brokerage Company

1515 Sepulveda Boulevard, Los Angeles, CA 90025-3311 | www.westmac.com | Company DRE #01096973

FOR LEASE

1990 Westwood Boulevard

LOS ANGELES, CA 90025

LEASE RATE

Office/Medical: \$3.25-\$4.50 FSG

AVAILABILITY

Suite 210 ±1,179 SF
Office space (*potential medical*)

~~Suite 238~~ **LEASED** ~~±1,939 SF~~

Suite 260 ±1,822 SF
3 glass window offices, kitchen, storage room, bull pen, Spec Suite

~~Suite 300~~ **LEASED** ~~±3,546 SF~~
~~5 window offices, large corner executive office with restroom, large glass conference room, 1 interior office, storage/copy/IT room~~

Suite 305 - 310 ±2,570 SF
Planned Spec Suite

Suite 330 ±4,724 SF
Evolve Executive Suite for psychiatrist and psychologists, (Call 310-288-5567) *Ask for Brian

Suite 350 ±3,411 SF
Seven windowed offices, four interior offices, kitchen, reception



The above information while not guaranteed has been secured from sources we believe to be reliable. We obtained the information contained in this memorandum from sources we believe to be reliable. However, we have not verified its accuracy and make no guarantee, warranty or representation about it. It is submitted subject to the possibility of errors, omissions, change of price, rental or other conditions, prior sale, lease or financing or withdrawal without notice. We include projections, opinions, assumptions or estimates for example only, and they may not represent current or future performance of the property. You and your tax and legal advisors should conduct your own investigation of the property and transaction.

PARKING

2.5/1,000 SF

Reserved: \$205

Unreserved: \$160

Tandem: \$270 (\$135 per car)

EV CHARGING STATIONS AVAILABLE ON-SITE

©2026 WESTMAC Commercial Brokerage Company. All Rights Reserved. WESTMAC Commercial Brokerage fully supports the principles of the Equal Opportunity Act. WESTMAC Commercial Brokerage Company and the WESTMAC Commercial Brokerage Company logo are registered service marks owned by WESTMAC Commercial Brokerage Company and may not be reproduced by any means or in any form whatsoever without written permission.

WESTMAC

WESTMAC Commercial Brokerage Company

1515 Sepulveda Boulevard, Los Angeles, CA 90025-3311 | www.westmac.com | Company DRE #01096973

FOR LEASE

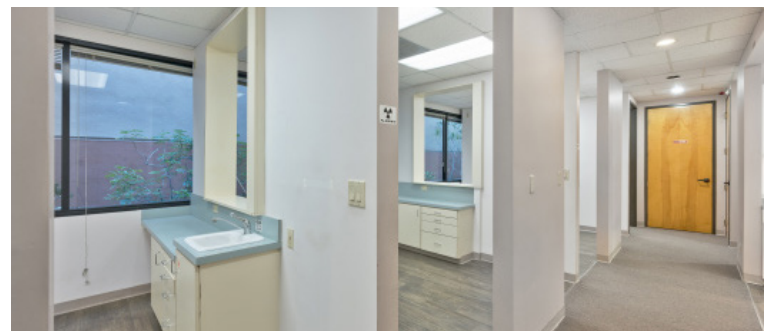
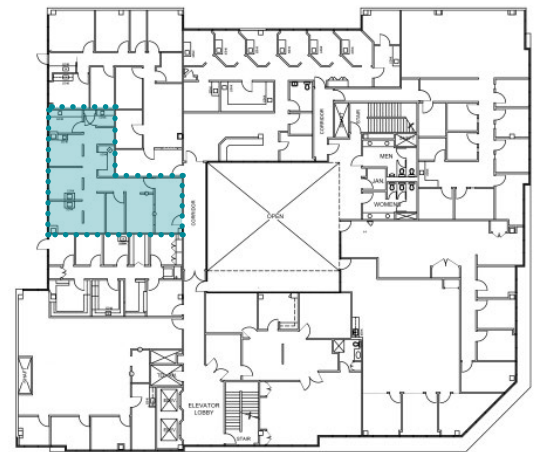
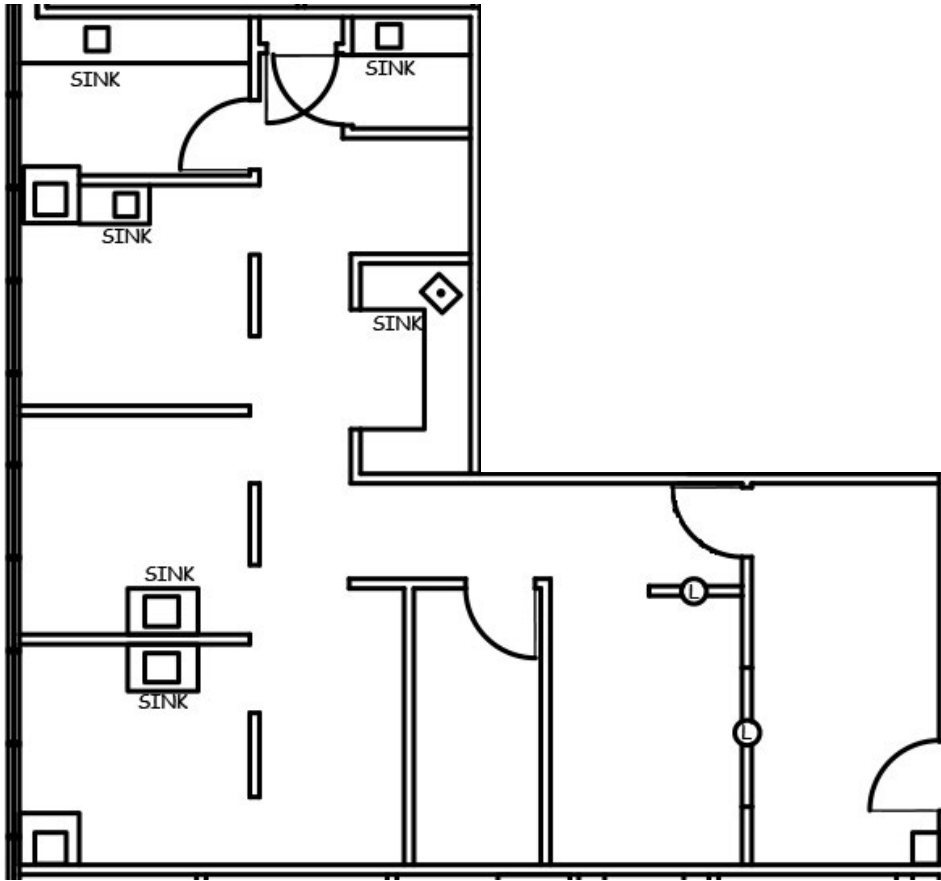
1990 Westwood Boulevard

LOS ANGELES, CA 90025

SUITE 210

±1,179 SF

Office space (*potential medical*)



©2026 WESTMAC Commercial Brokerage Company. All Rights Reserved. WESTMAC Commercial Brokerage fully supports the principles of the Equal Opportunity Act. WESTMAC Commercial Brokerage Company and the WESTMAC Commercial Brokerage Company logo are registered service marks owned by WESTMAC Commercial Brokerage Company and may not be reproduced by any means or in any form whatsoever without written permission.

WESTMAC

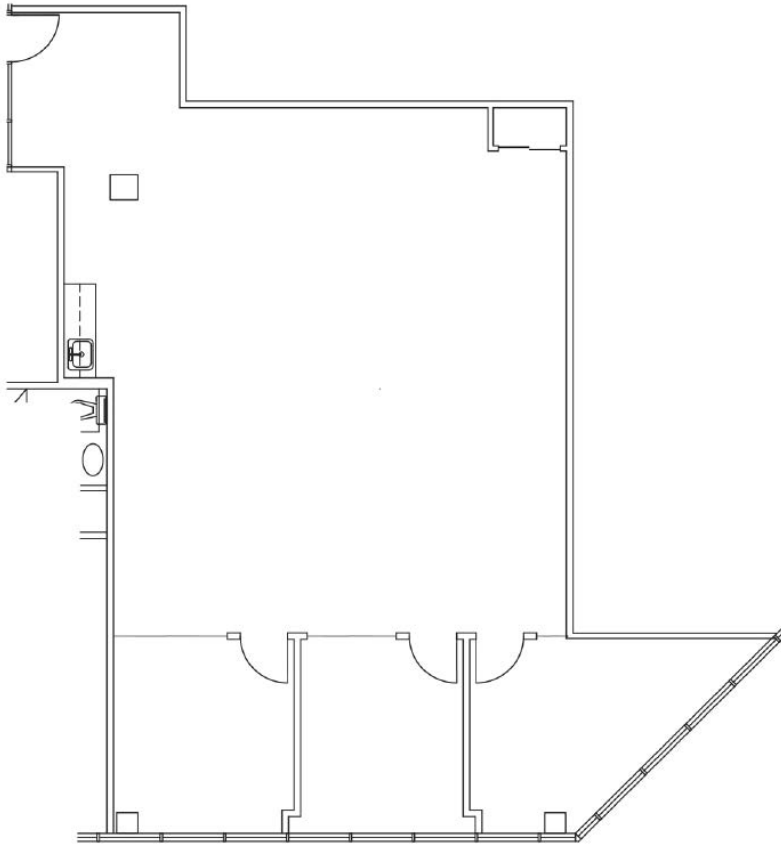
WESTMAC Commercial Brokerage Company

1515 Sepulveda Boulevard, Los Angeles, CA 90025-3311 | www.westmac.com | Company DRE #01096973

FOR LEASE

1990 Westwood Boulevard

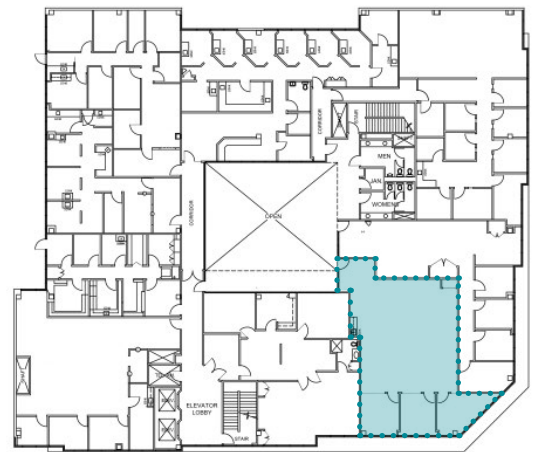
LOS ANGELES, CA 90025



SUITE 260

±1,822 SF

3 glass window offices, kitchen,
storage room, high end spec suite



©2026 WESTMAC Commercial Brokerage Company. All Rights Reserved. WESTMAC Commercial Brokerage fully supports the principles of the Equal Opportunity Act. WESTMAC Commercial Brokerage Company and the WESTMAC Commercial Brokerage Company logo are registered service marks owned by WESTMAC Commercial Brokerage Company and may not be reproduced by any means or in any form whatsoever without written permission.

WESTMAC

WESTMAC Commercial Brokerage Company

1515 Sepulveda Boulevard, Los Angeles, CA 90025-3311 | www.westmac.com | Company DRE #01096973

FOR LEASE

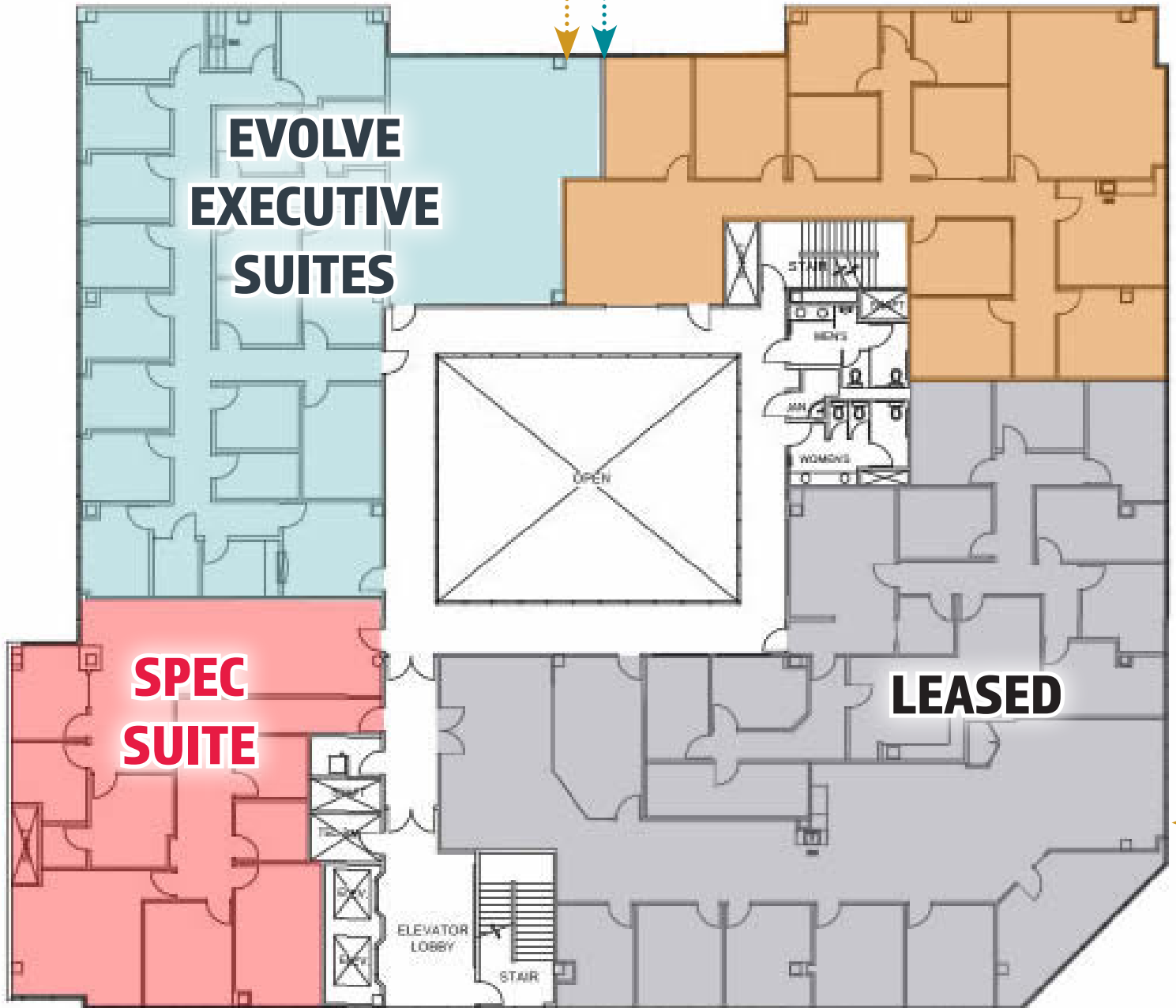
1990 Westwood Boulevard

LOS ANGELES, CA 90025

3RD FLOOR

±4,724 SF

±4,311 SF



©2026 WESTMAC Commercial Brokerage Company. All Rights Reserved. WESTMAC Commercial Brokerage fully supports the principles of the Equal Opportunity Act. WESTMAC Commercial Brokerage Company and the WESTMAC Commercial Brokerage Company logo are registered service marks owned by WESTMAC Commercial Brokerage Company and may not be reproduced by any means or in any form whatsoever without written permission.

WESTMAC

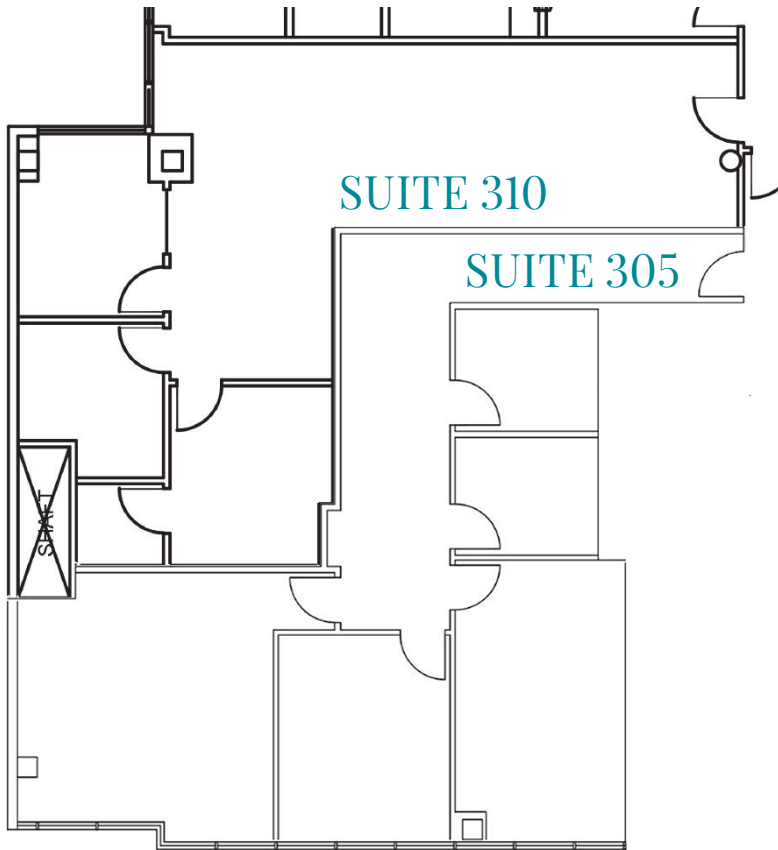
WESTMAC Commercial Brokerage Company

1515 Sepulveda Boulevard, Los Angeles, CA 90025-3311 | www.westmac.com | Company DRE #01096973

FOR LEASE

1990 Westwood Boulevard

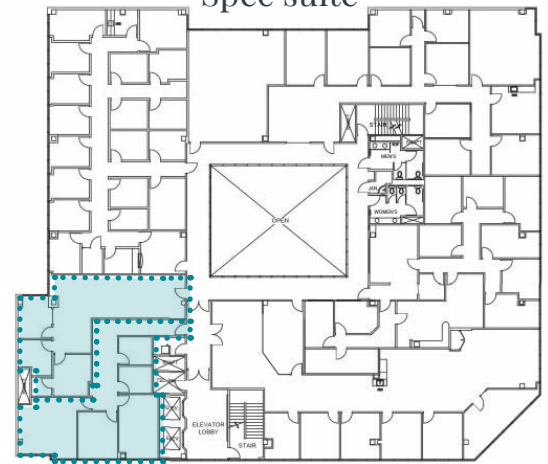
LOS ANGELES, CA 90025



SUITE 305 ±1,458 SF

SUITE 310 ±1,112 SF

↓
±2,570 SF
Contiguous
Spec suite



©2026 WESTMAC Commercial Brokerage Company. All Rights Reserved. WESTMAC Commercial Brokerage fully supports the principles of the Equal Opportunity Act. WESTMAC Commercial Brokerage Company and the WESTMAC Commercial Brokerage Company logo are registered service marks owned by WESTMAC Commercial Brokerage Company and may not be reproduced by any means or in any form whatsoever without written permission.

WESTMAC

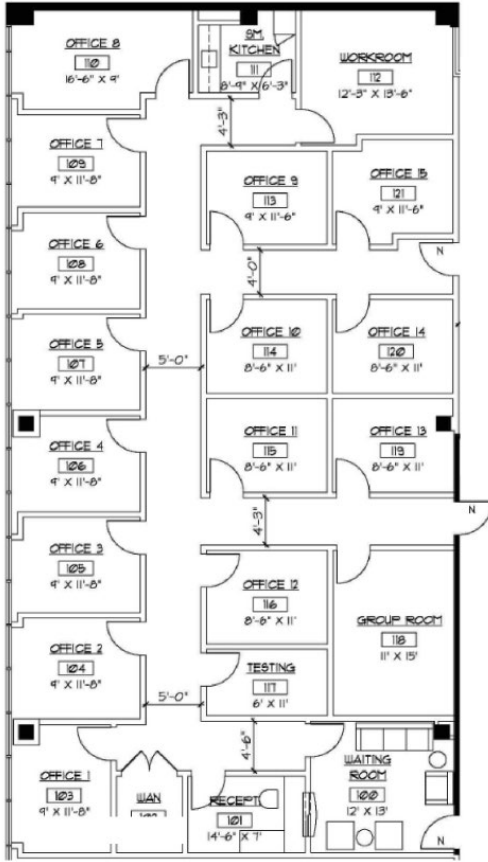
WESTMAC Commercial Brokerage Company

1515 Sepulveda Boulevard, Los Angeles, CA 90025-3311 | www.westmac.com | Company DRE #01096973

FOR LEASE

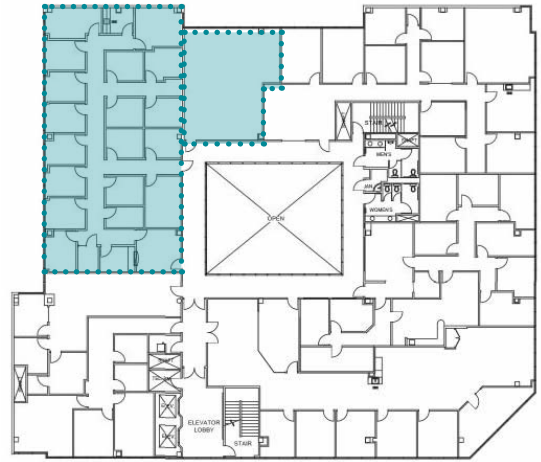
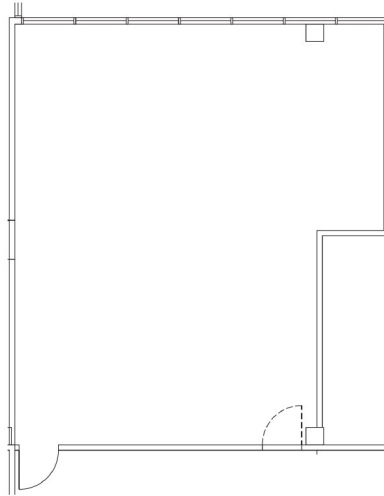
1990 Westwood Boulevard

LOS ANGELES, CA 90025



Evolve Executive Suite & Psychology Suites
(Call 310-288-5567) *Ask for Brian

±4,824 SF



©2026 WESTMAC Commercial Brokerage Company. All Rights Reserved. WESTMAC Commercial Brokerage fully supports the principles of the Equal Opportunity Act. WESTMAC Commercial Brokerage Company and the WESTMAC Commercial Brokerage Company logo are registered service marks owned by WESTMAC Commercial Brokerage Company and may not be reproduced by any means or in any form whatsoever without written permission.

WESTMAC

WESTMAC Commercial Brokerage Company

1515 Sepulveda Boulevard, Los Angeles, CA 90025-3311 | www.westmac.com | Company DRE #01096973

FOR LEASE

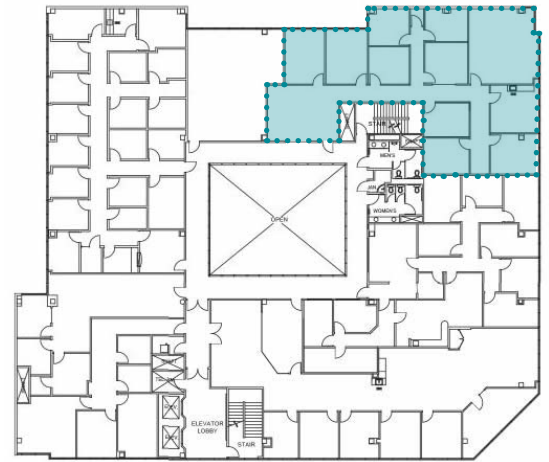
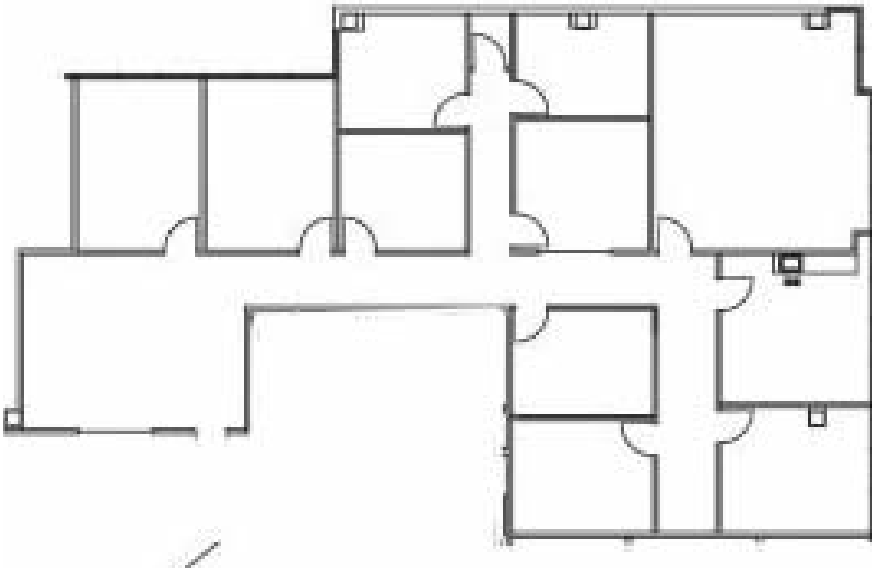
1990 Westwood Boulevard

LOS ANGELES, CA 90025

SUITE 350

±3,411 SF

Seven [7] windowed Offices,
Four [4] interior offices, kitchen,
reception



©2026 WESTMAC Commercial Brokerage Company. All Rights Reserved. WESTMAC Commercial Brokerage fully supports the principles of the Equal Opportunity Act. WESTMAC Commercial Brokerage Company and the WESTMAC Commercial Brokerage Company logo are registered service marks owned by WESTMAC Commercial Brokerage Company and may not be reproduced by any means or in any form whatsoever without written permission.

WESTMAC

WESTMAC Commercial Brokerage Company

1515 Sepulveda Boulevard, Los Angeles, CA 90025-3311 | www.westmac.com | Company DRE #01096973

FOR LEASE

1990 Westwood Boulevard

LOS ANGELES, CA 90025



RESTAURANTS

1. Byblos Mediterranean
2. Farsi Cafe
3. Mashti Malone's Ice Cream
4. Eduardo's Border Grill
5. Super Tacos Gallito
6. Feast From The East
7. Tacos Tu Madre
8. Taste of Tehran
9. Sunnin Lebanese Cafe
10. Shamshiri Grill
11. Diplomat Cafe
12. Thai Fresh Cafe
13. La Bruschetta
14. Asuka
15. Starbucks
16. Flame Persian Cuisine
17. Attari Sandwich Shop
18. Fresh Corn Grill - Westwood
19. Mary and Robb's
20. Cafe Glace
21. Pomodoro Trattoria
22. Westwood Thai Cafe
23. Maharaja Cuisine Of India
24. Tuscan Son- Modern Italian
25. Jack in the Box
26. Subway
27. The Bigg Chill
28. Pastina Trattoria

HOTELS

1. Olivia Hotel
2. Azul Inn
3. Kimpton Hotel Palomar - LA
4. Plaza La Reina
5. Royal Palace Westwood Hotel
6. Palihotel Westwood Village

FITNESS

1. Beyond Fitness
2. LA Fitness
3. Westwood Private Fitness
4. Royal Palace Hotel
5. Palihotel Westwood Village

SHOPPING

1. Trove
2. Box City
3. Hayes Center
4. Westwood Center
5. Petco
6. World Market
7. BevMo!
8. Sprouts Farmers Market
9. Bristol Farms
10. 99 Ranch Market

©2026 WESTMAC Commercial Brokerage Company. All Rights Reserved. WESTMAC Commercial Brokerage fully supports the principles of the Equal Opportunity Act. WESTMAC Commercial Brokerage Company and the WESTMAC Commercial Brokerage Company logo are registered service marks owned by WESTMAC Commercial Brokerage Company and may not be reproduced by any means or in any form whatsoever without written permission.

WESTMAC

WESTMAC Commercial Brokerage Company

1515 Sepulveda Boulevard, Los Angeles, CA 90025-3311 | www.westmac.com | Company DRE #01096973

FOR LEASE

1990 Westwood Boulevard

LOS ANGELES, CA 90025



FOR MORE INFO CONTACT EXCLUSIVE AGENTS

JEFFREY PICKETT

Executive Vice President

pickett@westmac.com

424.832.5306 direct

DRE#: 01828924

WESTMAC

JIM BURNAP

Executive Vice President

burnap@westmac.com

310.966.4385 direct

DRE#: 01020515

WESTMAC

DEAN HECK

Executive Vice President

dheck@beitler.com

310.721.1988 direct

DRE#: 00872647

BEITLER

WESTMAC

COMPANY DRE: 01096973

BEITLER

COMPANY DRE: 00808850

©2026 WESTMAC Commercial Brokerage Company. All Rights Reserved. WESTMAC Commercial Brokerage fully supports the principles of the Equal Opportunity Act. WESTMAC Commercial Brokerage Company and the WESTMAC Commercial Brokerage Company logo are registered service marks owned by WESTMAC Commercial Brokerage Company and may not be reproduced by any means or in any form whatsoever without written permission.

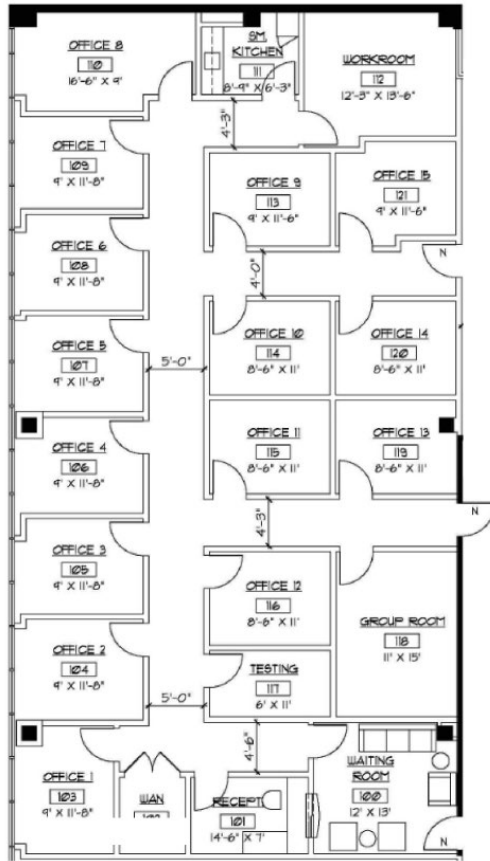
WESTMAC

WESTMAC Commercial Brokerage Company

1515 Sepulveda Boulevard, Los Angeles, CA 90025-3311 | www.westmac.com | Company DRE #01096973

EVOLVED SPACES

PSYCHIATRIST & PSYCHOLOGIST SUITES



FLEXIBLE TERM & PRICING
OPTIONS AVAILABLE

AMENITIES



**EVOLVED
SPACES**

CONTACT US
(661) 713-5896
Leah@goevolvedspaces.com



VISIT OUR WEBSITE
www.goevolvedspaces.com