

Barta Bailey

OFFICE SUITE FOR LEASE
201 NW 10TH STREET, SUITE 100, OKC 73103



Property Description

Tenants can take advantage of this Class A buildout in an iconic building in Midtown.

This suite includes spacious private offices, a large conference room and a dedicated entry door from the Park Place Plaza on the north side of the building. Employees will love being walking distance to all of the restaurants and retailers in north downtown and a streetcar stop is located at this intersection for easy access to downtown and the courthouse.

Exterior sign is allowed on building's office lobby entrance as well as on the suite's dedicated entrance.

Furniture, fixtures and equipment not included.

Highlights

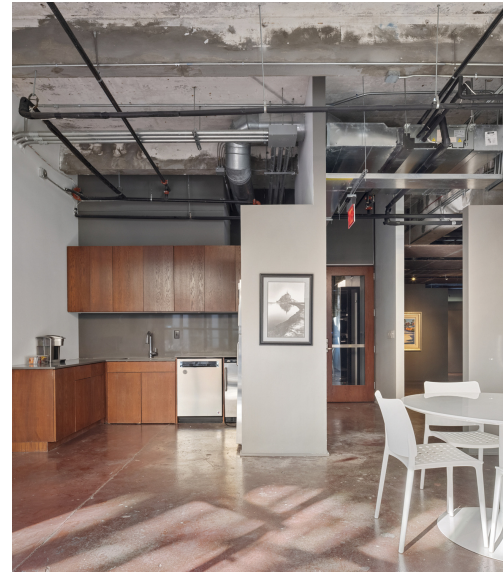
- Exceptional interior buildout
- 12 private offices + additional open workspace
- Dedicated private entrance

Offering Summary

Lease Rate:	\$24 SF/yr (NNN)
Building Size:	7,370 SF

Barta Bailey

OFFICE SUITE FOR LEASE
201 NW 10TH STREET, SUITE 100, OKC 73103



ALLISON BAILEY

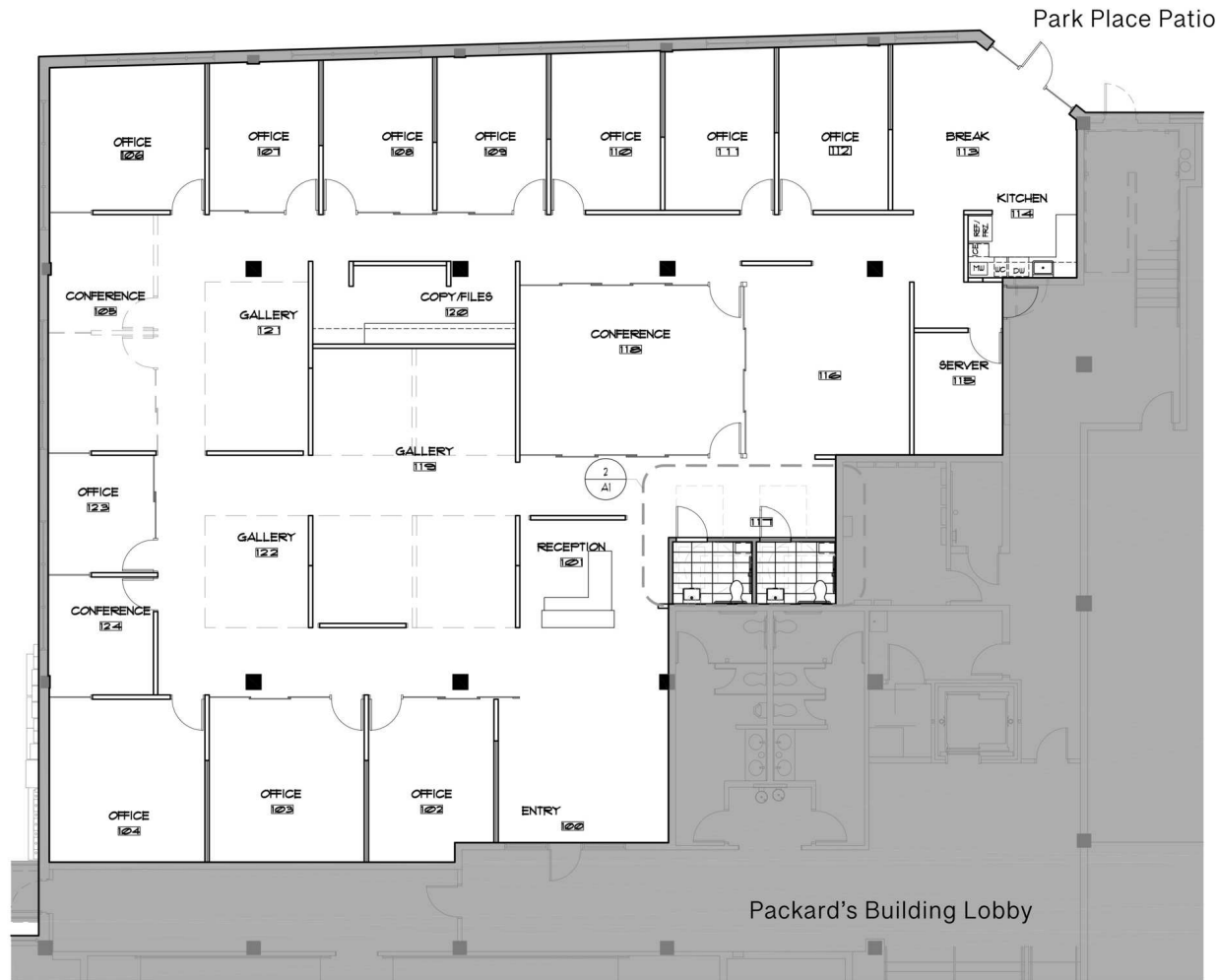
405.620.3883

ALLISON@BARTABAILEY.COM

BARTABAILEY.COM

Barta Bailey

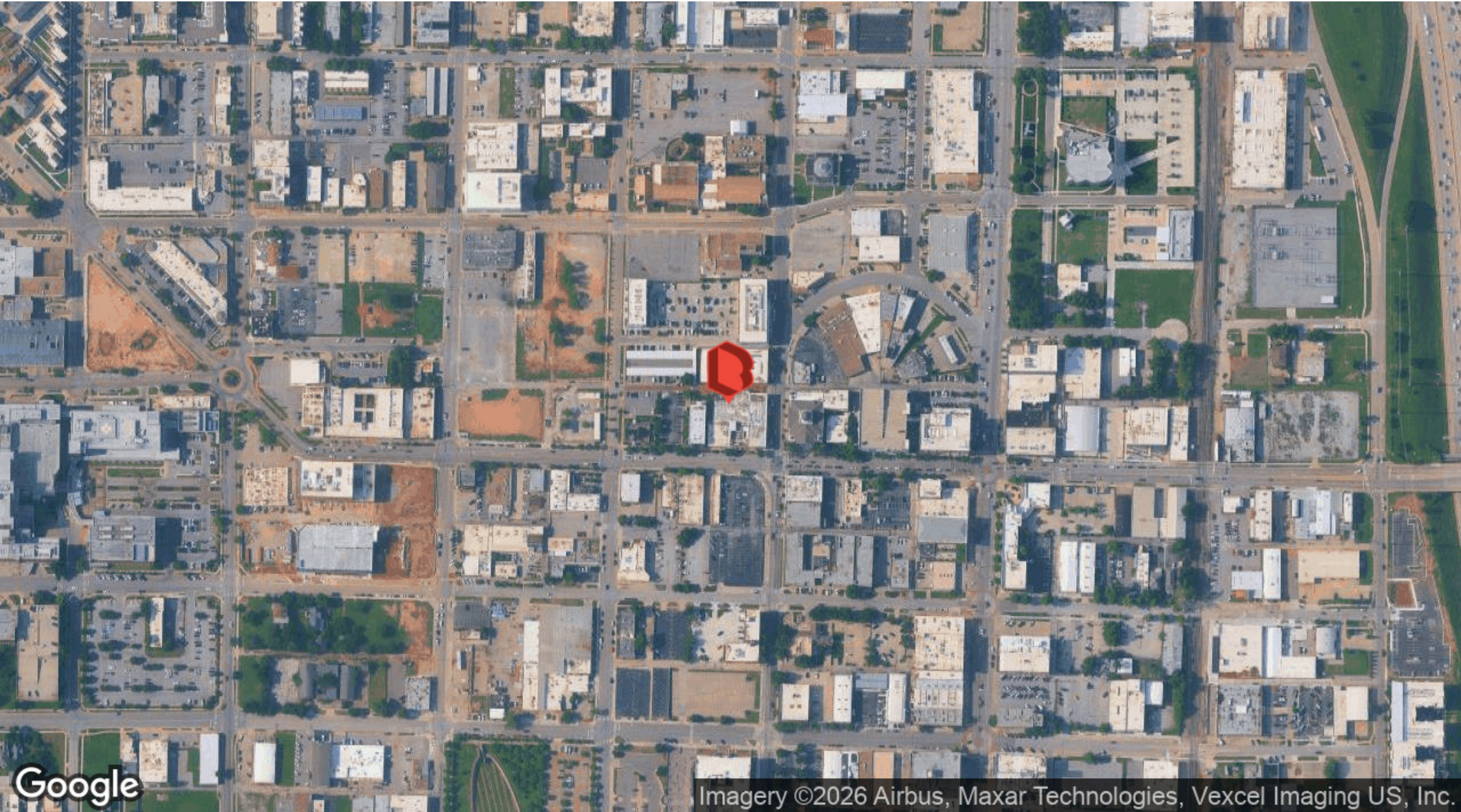
FLOOR PLAN
201 NW 10TH STREET, SUITE 100



 1 FLOOR PLAN
A1 SCALE: 1/8" = 1'-0"

Barta Bailey

OFFICE SUITE FOR LEASE
201 NW 10TH STREET, SUITE 100, OKC 73103



ALLISON BAILEY

405.620.3883

ALLISON@BARTABAILEY.COM

BARTABAILEY.COM
