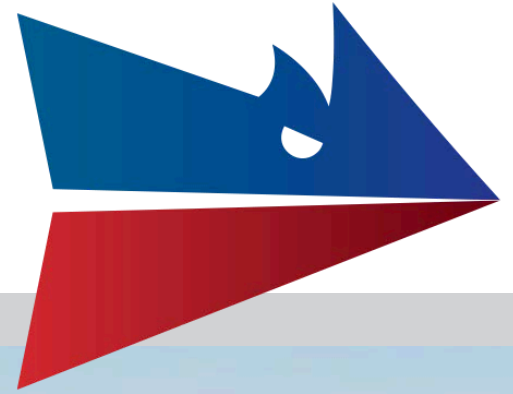


# Available for Lease

142nd Avenue | Wayland, MI



**CLARK LOGIC** 

NEW INDUSTRIAL DEVELOPMENT, OPTIONS FROM  
**+/- 50,000 to 475,000 SF**

**Tim Monahan | Director of Development**

 269.861.9487  [tim@clarklogic.com](mailto:tim@clarklogic.com)

**Matt Conlee | Director of Real Estate**

 574.333.5344  [matt@clarklogic.com](mailto:matt@clarklogic.com)



## Property Snapshot

Site Size	+/- 48.44 Acres
Buildings Planned	Six (6)
Total Site SF	+/- 475,000 SF
Building Sizes	100,000 SF (3) 75,000 SF (1) 50,000 SF (2)
County/Parcel	Allegan/ 05-024-008-00

*All information contained herein is deemed reliable but is not guaranteed and is subject to independent verification. No liability is assumed for errors, omissions, or changes in availability or condition.*

## Property Description

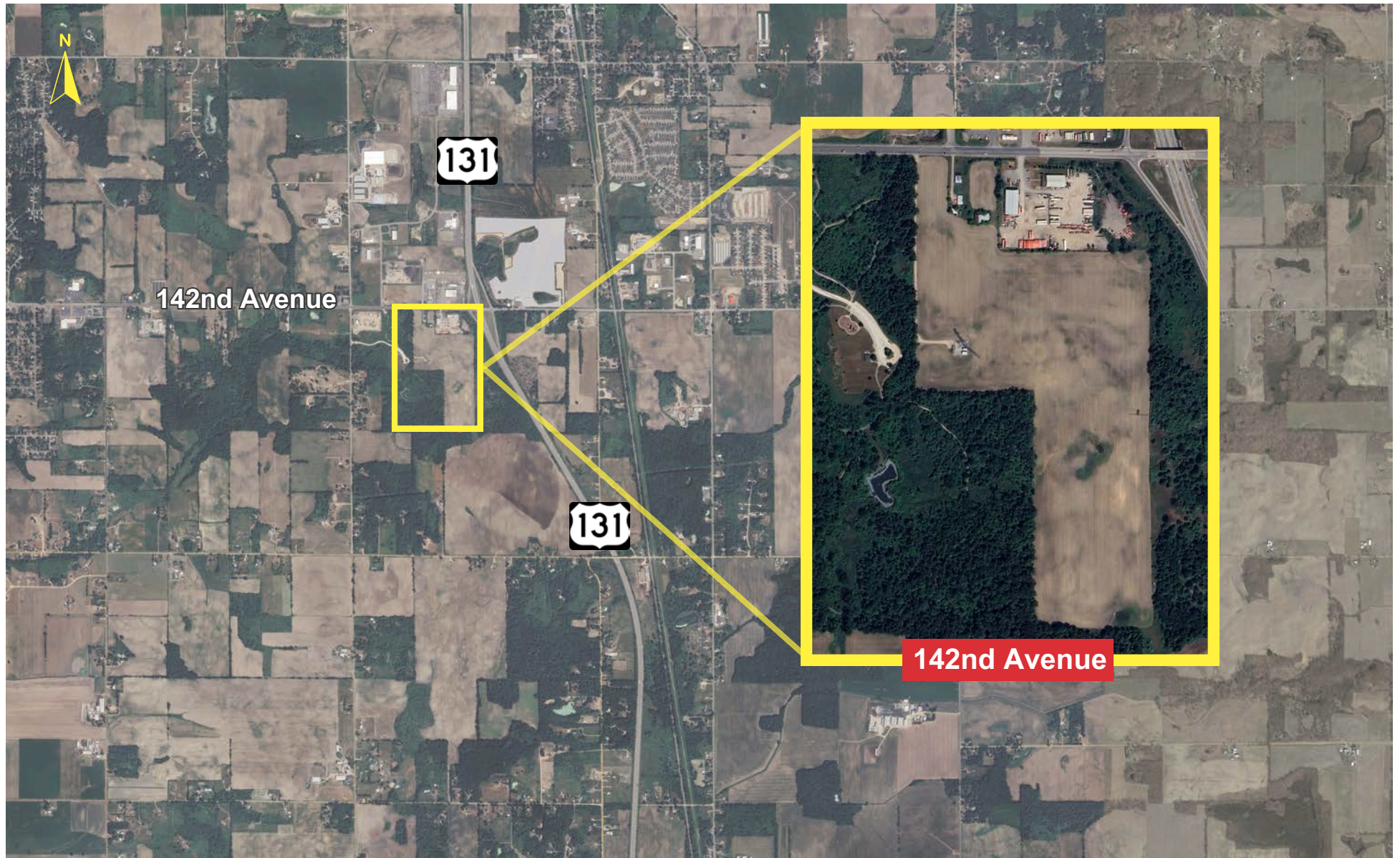
Located on 142nd Street, less than a quarter-mile off US-131 at Exit 68, this new industrial development spans more than 48 acres. Just 20 minutes south of Grand Rapids, the site offers prime accessibility and visibility.

The industrial campus is thoughtfully planned for six modern buildings, including two at 50,000 SF, three at 100,000 SF, and one at 75,000 SF, making it ideal for a variety of users and industries.

This development presents a strategic opportunity for businesses seeking growth, efficiency, and proximity to West Michigan's major transportation corridors.



# SITE AERIAL



# SITE PLAN



# PROPERTY IMAGES

Northbound and Southbound  
US-131 connectivity



View Looking South

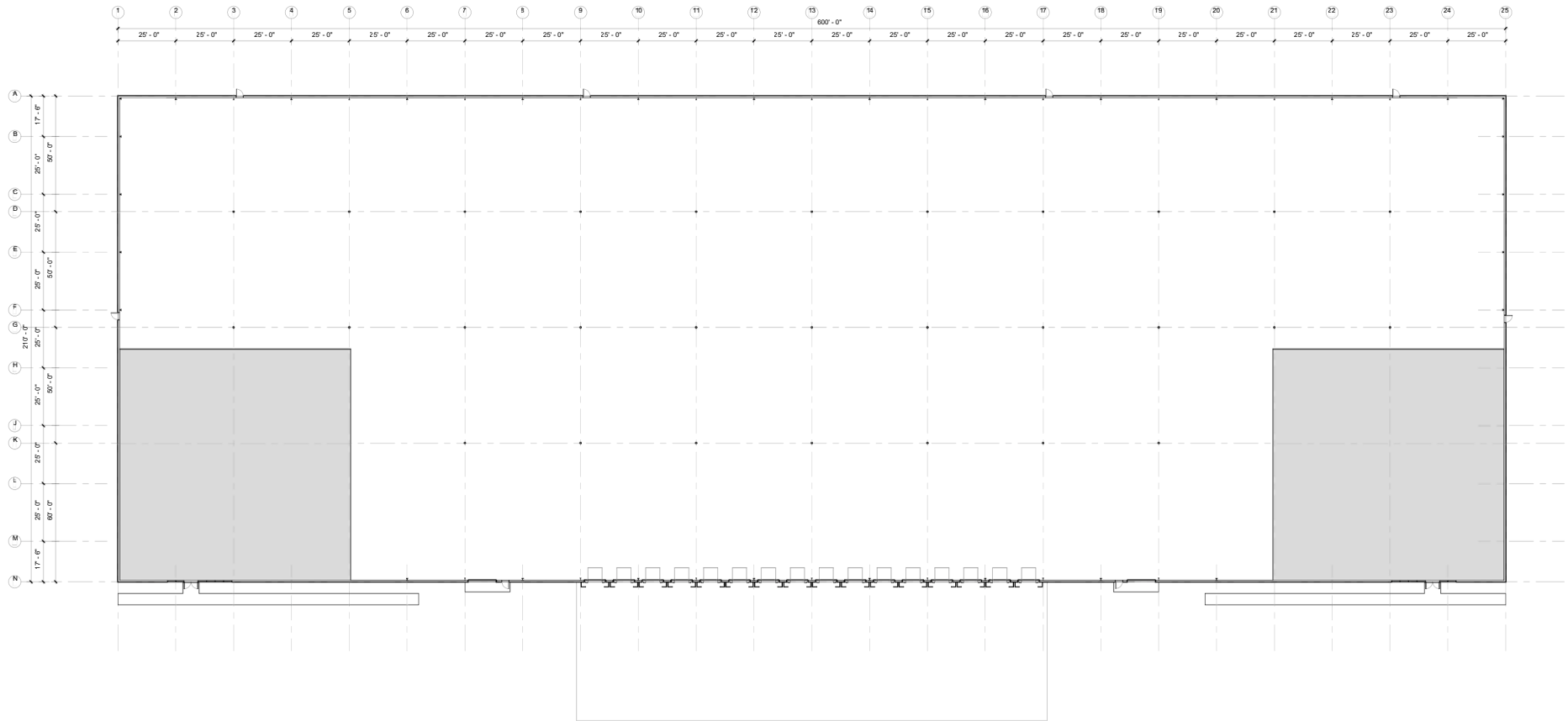


View Looking North



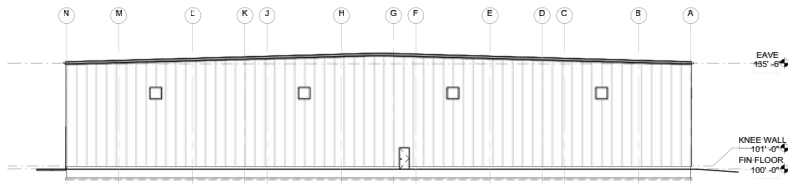
View Looking South

# FLOOR PLAN #1

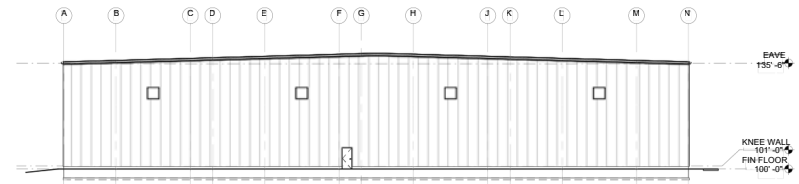


**Floor Plan Option 1**

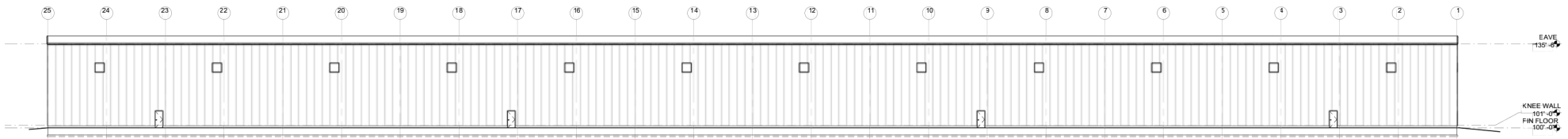
# ELEVATIONS #1



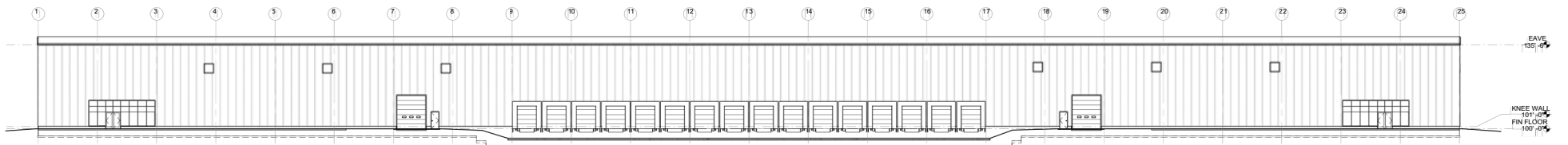
**EAST ELEVATION**  
3/64" = 1'-0"



**WEST ELEVATION**  
3/64" = 1'-0"



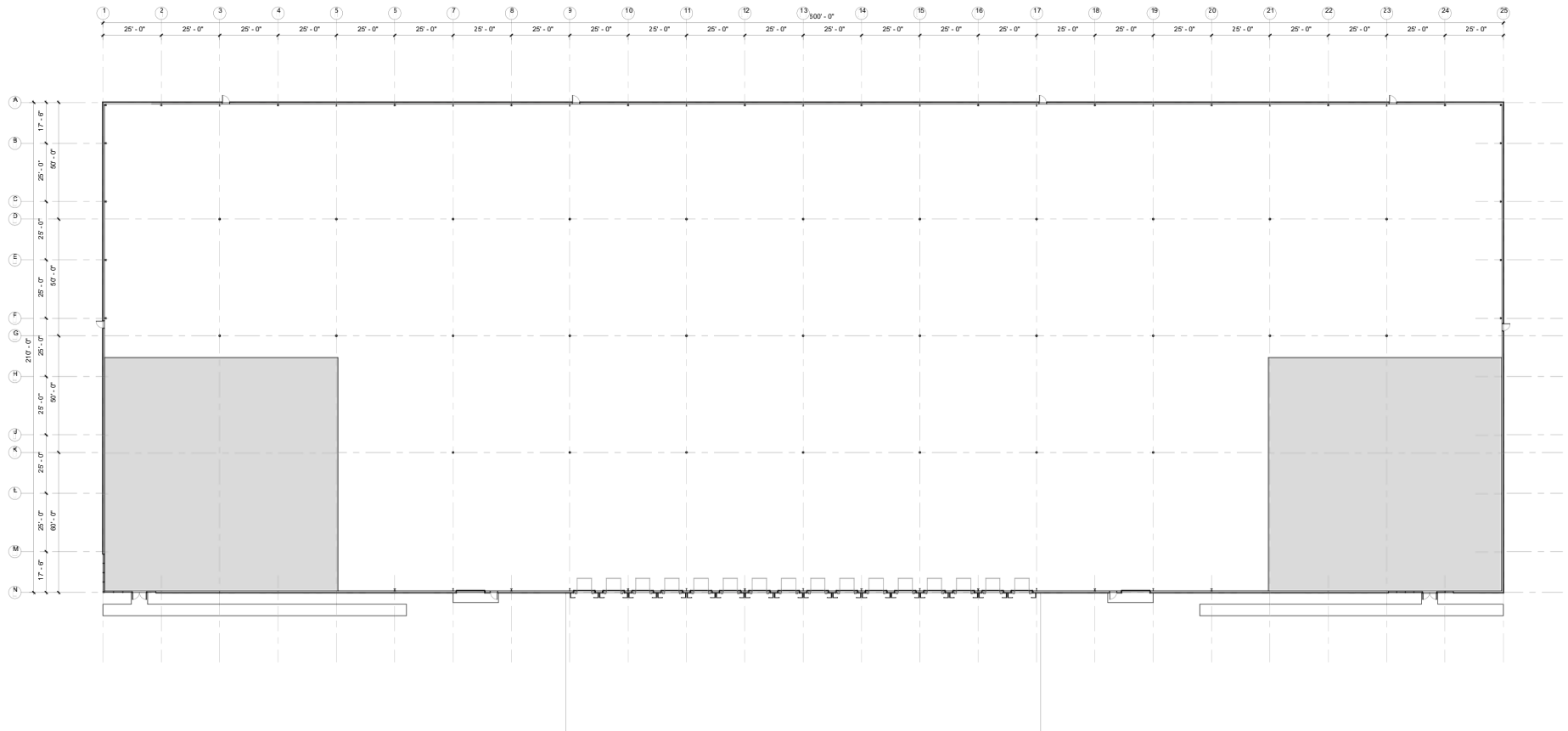
**NORTH ELEVATION**  
3/64" = 1'-0"



**SOUTH ELEVATION**  
3/64" = 1'-0"

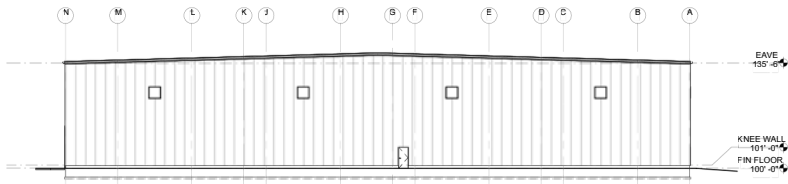
## Elevations Option 1

# FLOOR PLAN #2

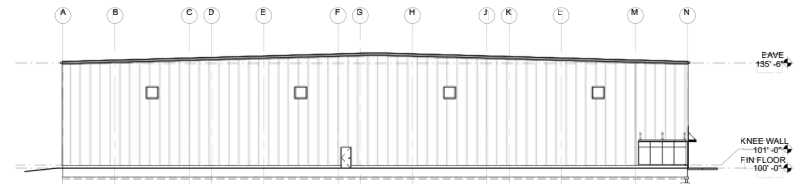


**Floor Plan Option 2**

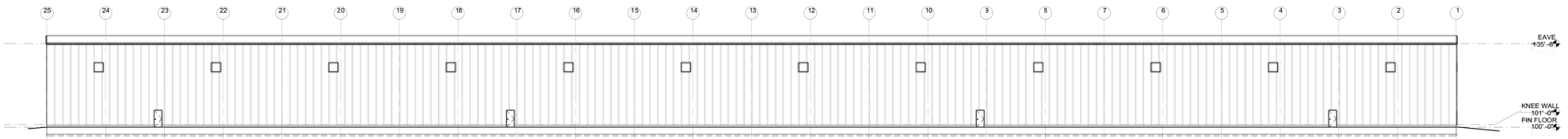
# ELEVATIONS #2



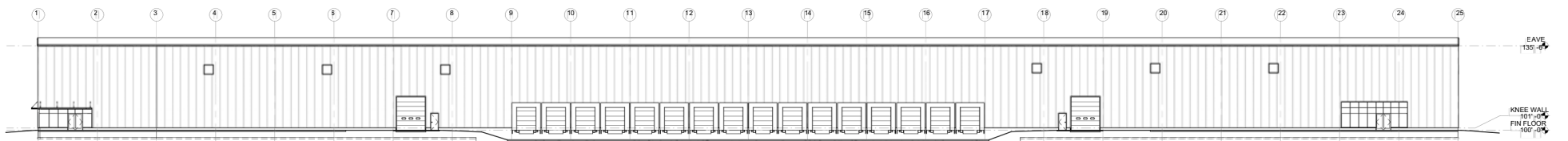
**EAST ELEVATION Option 2**  
3/64" = 1'-0"



**WEST ELEVATION Option 2**  
3/64" = 1'-0"



**NORTH ELEVATION Option 2**  
3/64" = 1'-0"



**SOUTH ELEVATION Option 2**  
3/64" = 1'-0"

## Elevations Option 2

# OUR FULL RANGE OF SERVICES

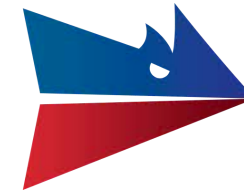
- Real Estate & Development
- Transportation & Logistics
- Warehousing Services
- 3PL & Material Handling
- Heavy Machinery Moving & Rigging
- Cardboard, Paper & Pallet Recycling and Sales
- Landscape, Lawn Care & Snow Removal
- Semi Trailer & Container Rental and Sales
- Facility Cleaning
- Automotive Dunnage Washing



**AUTHORIZED DEALER**  
New Trailers, Parts & Service



# CLARK LOGIC



**JAMIE CLARK**  
President  
269.207.3081  
jamie@clarklogic.com



**MATT CONLEE**  
Director of Real Estate  
574.333.5344  
matt@clarklogic.com



**TIM MONAHAN**  
Director of Development  
269.861.9487  
tim@clarklogic.com

## CORPORATE LOCATIONS

### REAL ESTATE HEADQUARTERS

2314 Helen Avenue  
Portage, MI 49002  
269.323.0717

### MILHAM HEADQUARTERS

3700 E. Milham Avenue  
Portage, MI 49002  
269.279.7405

### KILGORE HEADQUARTERS

3801 E. Kilgore Road  
Kalamazoo, MI 49001  
269.279.7405

