

SW

- NOTES:
1. MINIMUM SET BACKS ARE AS SHOWN:
 - A. FRONT - 60.00' (EXCEPT WHERE SHOWN)
 - B. SIDE - 0.00'
 - C. REAR - 20.00'
 2. UTILITY EASEMENTS ARE AS SHOWN:
 - A. FRONT - 10.00'
 - B. SIDE & REAR 5.00'
 3. WATER AND SEWER SERVICE WILL BE PROVIDED BY THE CITY OF OLIVE BRANCH.
 4. ALL NEW CORNERS SET BY THIS FIRM WILL BE 1/2" (#4) REBAR WITH PLASTIC CAPS READING E-28599, RLS 1909.
 5. ALL BEARINGS ARE REFERENCED TO MISSISSIPPI STATE PLANE COORDINATES (MS ZONE WEST, NAD 83)
 - GRID NORTH BY GPS OBSERVATION.
 8. THE SCALE SHOWN IS FOR A 18" X 24 " SHEET ONLY. SCALE ACCORDINGLY FOR ANY OTHER SHEET SIZE.

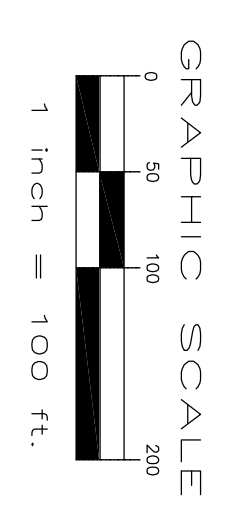
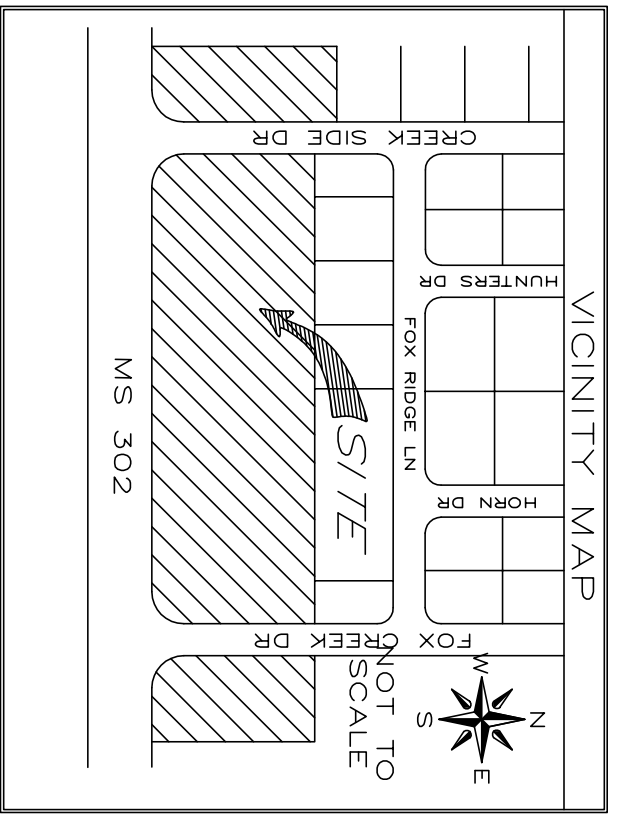
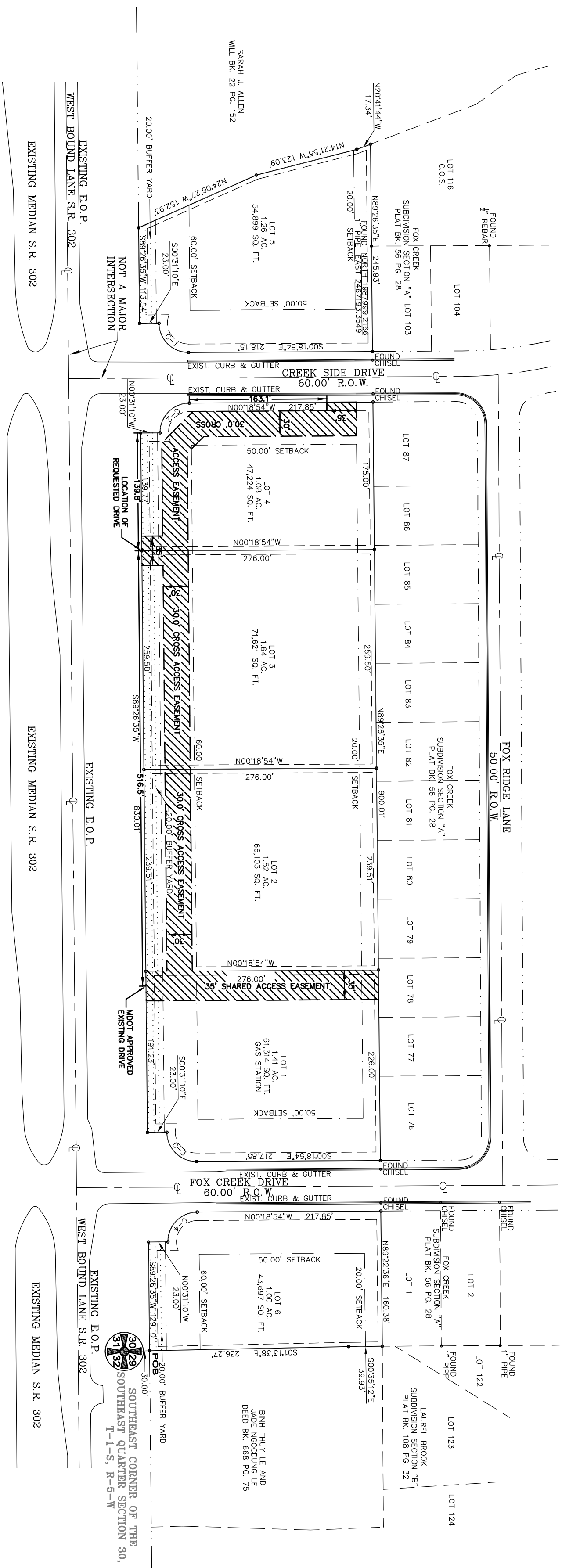
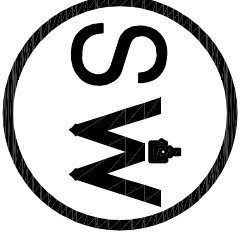


EXHIBIT
FOX CREEK
COMMERCIAL SUBDIVISION
SECTION 30 T-1-S, R-5-W
CITY OF OLIVE BRANCH
DESOTO COUNTY, MISSISSIPPI
OCTOBER, 2025

ZONING: P.U.D.
TOTAL AREA: 7.91 ACRES
TOTAL LOTS: 6
OWNER/DEVELOPER:
FOX CREEK INVESTMENT, LLC.



SMITH & WALKER
ENGINEERING & SURVEYING
8180 AIRWAYS BOULEVARD, SUITE B PH# (662) 393-3346
SOUTHAVEN, MISSISSIPPI 38671 FAX (662) 536-6183

SW

SW