

# 7,782 SF Dock High & Ground Level- For Lease

4980 West Amelia Earhart Drive, Suite C



## Dock High & Ground Level

**LEASE RATE: \$.95 PSF, MG**

## Property Details

Total Size: 7,782 SF  
Office: 1,720 SF  
Warehouse 6,062 SF  
Doors: (1) 12'x10' Dock High  
(2) 12'x10' Ground Level  
(1) 8'x10' Ground Level

Ceiling Height: 12'6"

- Great layout with reception/showroom, 3 private offices, conference room, break area, and 4 restrooms
- Ample Parking
- Great access to I-80 freeway
- We can cut off 2,132 SF of warehouse space leaving a total of 5,650 SF

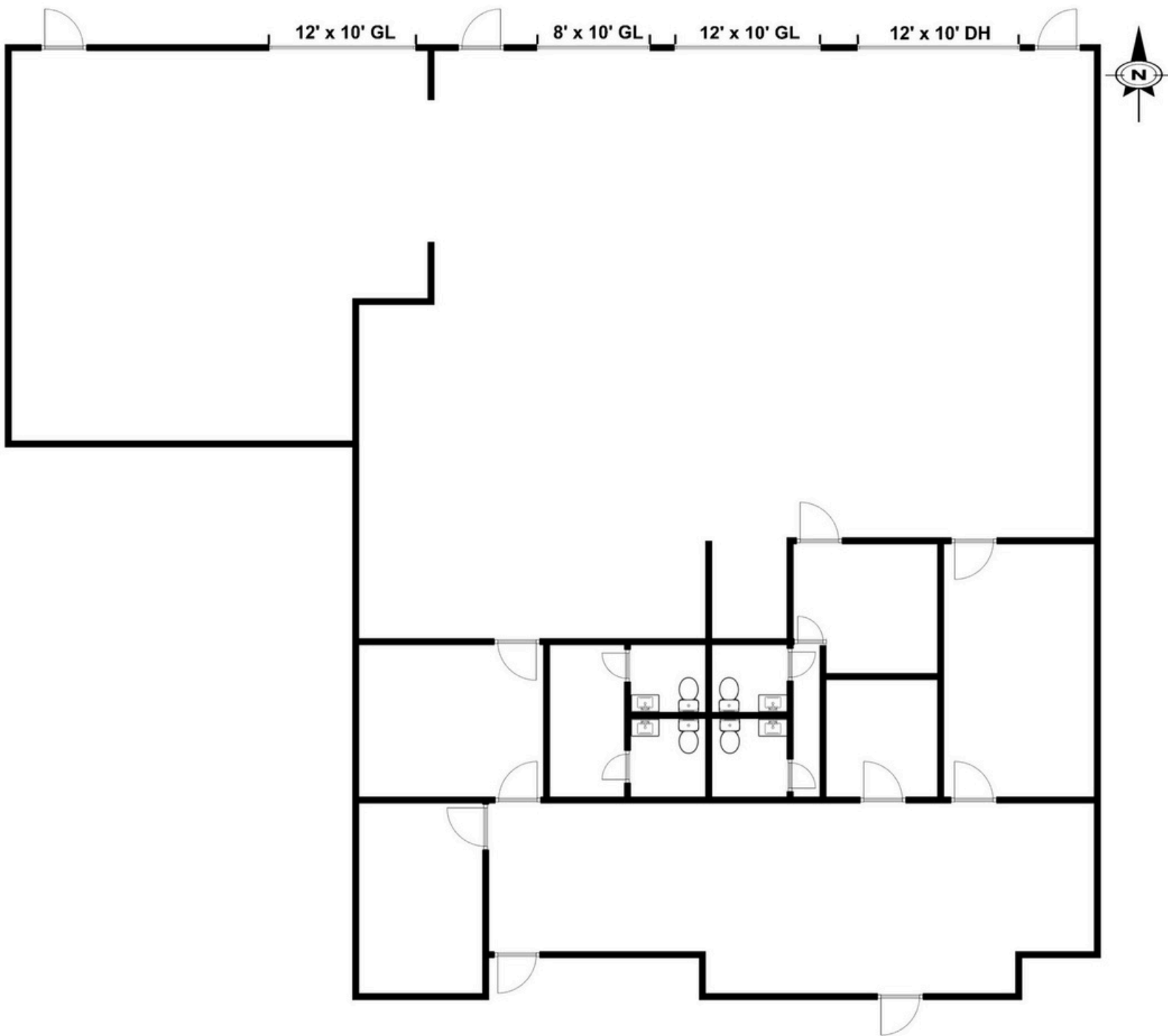


Bob Mills  
385.988.6477  
bob@adventut.com

Riley Mills  
385.988.6478  
riley@adventut.com

# 7,782 SF Dock High & Ground Level- For Lease

4980 West Amelia Earhart Drive, Suite C



Bob Mills  
385.988.6477  
bob@adventut.com

Riley Mills  
385.988.6478  
riley@adventut.com