

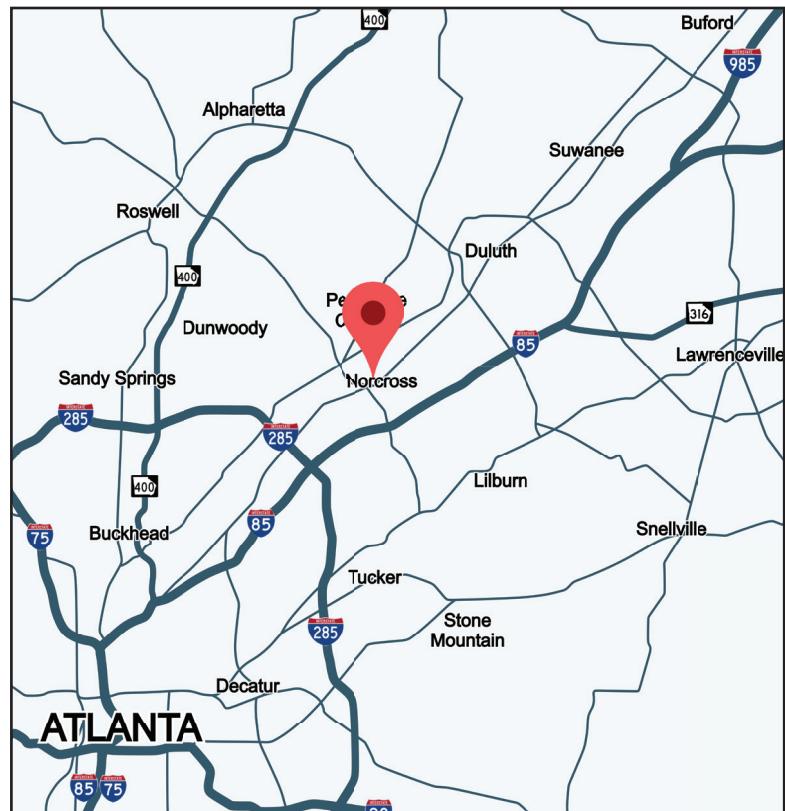
# FOR LEASE

5801-5901 GOSHEN SPRINGS ROAD  
NORCROSS, GA 30071



## PROPERTY INFORMATION

- 145,891 Total SF Industrial Building
- **6,371 SF Available**
  - 5801 - Suite E
- Dock-High & Drive-In Loading
- 20' Clear Height
- Rear Load Configuration
- Fully Sprinklered
- Ample Parking
- Corporate Business Park Environment
- Immediate access to I-85 via Jimmy Carter Blvd (±0.5 mi)



All information contained herein is believed to be accurate but is not warranted. This offer is subject to errors, omissions, prior sale or withdrawal.



**Hughes Commercial Real Estate, Inc.**  
8215 Roswell Road, Building 700  
Atlanta, GA 30350  
770-559-1099 | [hughes-cre.com](http://hughes-cre.com)

**Matt Nelsen**  
404-431-0971  
[matt@hughes-cre.com](mailto:matt@hughes-cre.com)

Owned By:



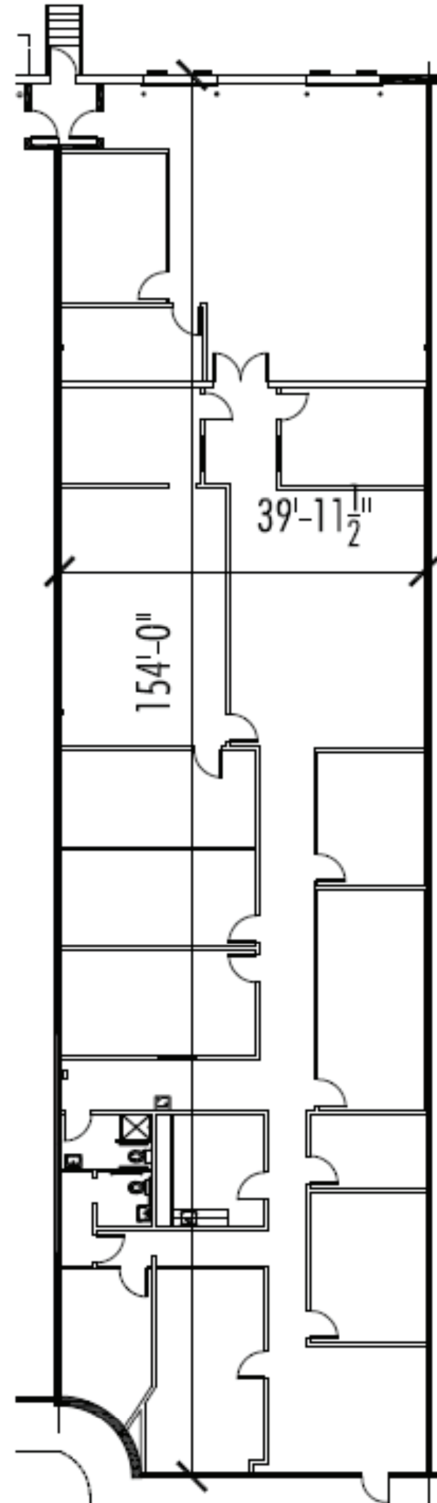
# FOR LEASE

5801-5901 GOSHEN SPRINGS ROAD  
NORCROSS, GA 30071

FLOOR PLAN | 5801 GOSHEN SPRINGS | SUITE E | 6,371 SF

## SUITE INFORMATION

- CURRENT FLOOR PLAN:
- 6,371 SF
- ±4,825 SF Office
- ±1,546 SF Warehouse
- One (1) Dock-High Door
- One (1) Drive-In Door



All information contained herein is believed to be accurate but is not warranted. This offer is subject to errors, omissions, prior sale or withdrawal.



**Hughes Commercial Real Estate, Inc.**  
8215 Roswell Road, Building 700  
Atlanta, GA 30350  
770-559-1099 | [hughes-cre.com](http://hughes-cre.com)

**Matt Nelsen**  
404-431-0971  
[matt@hughes-cre.com](mailto:matt@hughes-cre.com)

Owned By:



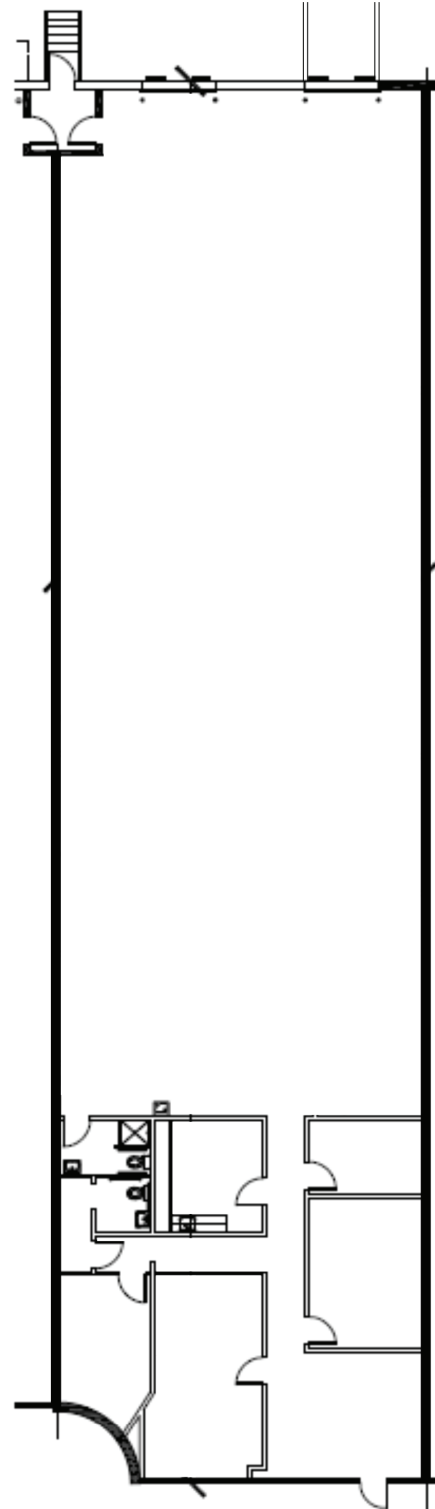
# FOR LEASE

5801-5901 GOSHEN SPRINGS ROAD  
NORCROSS, GA 30071

PROPOSED FLOOR PLAN | 5801 GOSHEN SPRINGS | SUITE E | 6,371 SF

## SUITE INFORMATION

- PROPOSED FLOOR PLAN:
- 6,371 SF
- ±1,600 SF Office
- ±4,771 SF Warehouse
- One (1) Dock-High Door
- One (1) Drive-In Door



All information contained herein is believed to be accurate but is not warranted. This offer is subject to errors, omissions, prior sale or withdrawal.



**Hughes Commercial Real Estate, Inc.**  
8215 Roswell Road, Building 700  
Atlanta, GA 30350  
770-559-1099 | [hughes-cre.com](http://hughes-cre.com)

**Matt Nelsen**  
404-431-0971  
[matt@hughes-cre.com](mailto:matt@hughes-cre.com)

Owned By:

