

**OFFICE/FOR LEASE**

**First year lease rate of \$6.00 psf on second floor suites**



**PARK LANE BUSINESS CENTER  
8122 SOUTHPARK LANE  
LITTLETON, CO 80120**

**Park Lane Business Center**, located in the Campus at Southpark Business Center, is a well maintained, mixed use office/flex warehouse facility.

**Second floor walk up only**, individual office suites with private entrances afford 24-hour access. Fantastic mountain views. Lots of windows – lots of natural light. Individual HVAC units. Ample parking.

The property is located between Mineral and County Line just west of Broadway and easily accessible via Santa Fe Drive (Hwy 85), I-25 and C-470.

**BEST RATES IN SOUTHPARK!**

**Second Floor Office Space**

**\$6.00 PSF NNN first year lease rate!**

**\$10.00 psf NNN**

**(2nd and 3rd year lease rates)**

**PROPERTY STATISTICS**

**BUILDING**

**SITE**

<b>SIZE</b>	43,987 SF	<b>SITE SIZE</b>	2.542 acres
<b>YOC</b>	1986	<b>PARKING</b>	2.0:1,000, 86
<b>MATERIALS</b>	Steel Frame with Stucco & Concrete	<b>ZONING</b>	PDI/Light Industrial
<b>CAM 2026</b>	\$8.10		



**FOR MORE INFORMATION, PLEASE CALL:**

**John V. Propp, CCIM, Joshua Cohen**  
303-692-1816 - 720-232-4014  
6020 Greenwood Plaza Blvd., Suite 100  
Greenwood Village, CO 80111  
john@johnproppcommercial.com  
Joshua@johnproppcommercial.com  
learn more at [www.JohnProppCommercial.com](http://www.JohnProppCommercial.com)



**John Propp**  
COMMERCIAL GROUP

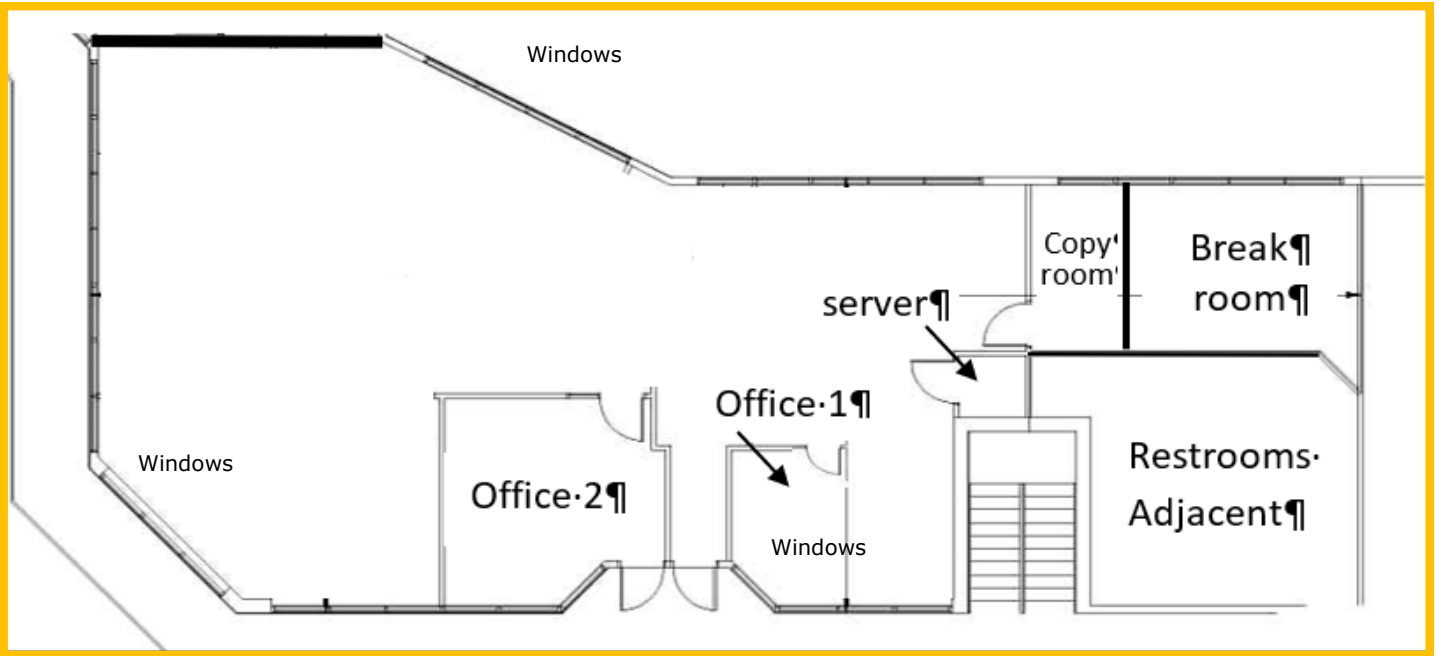


**PARK LANE BUSINESS CENTER  
8122 SOUTHPARK LANE  
LITTLETON, CO 80120**

**Suite 211  
2,559 sf**

MONTHLY RENT:  
RENT: \$1,279.50  
CAM: \$1,727.33  
TOTAL: \$3,006.83

**First year lease rate of  
\$6.00 psf on second  
floor office suite**



No warranty or representation is made as to the accuracy of the foregoing information. Terms of sale or lease and availability are subject to change or withdrawal without notice.

**John Propp**  
COMMERCIAL GROUP