

FOR LEASE

# SAMMAMISH VIEW OFFICE

*Office Space Available  
For Lease in Issaquah*

22605 SE 56TH ST, ISSAQUAH, WA 98029



# SAMMAMISH VIEW OFFICE



**SUBJECT  
PROPERTY**

**Fred Meyer**

**e4  
FITNESS**

**BEST  
BUY**

**value  
village**  
SHOP. REUSE. REIMAGINE.

**BARTELL  
DRUGS**

## OFFICE AVAILABILITY

Suite 150: 1,454 SF

Suite 230: 1,686 SF

Suite 290: 1,370 SF

\$28.00/SF, NNN

Walking distance to many restaurants

East access to I-90 with high visibility

Secured under ground parking  
3.50/1,000 SF

Beautiful mountain and territorial views  
from suite 210

Perfect location for Costco Vendors

**8 MIN**

TO I-90

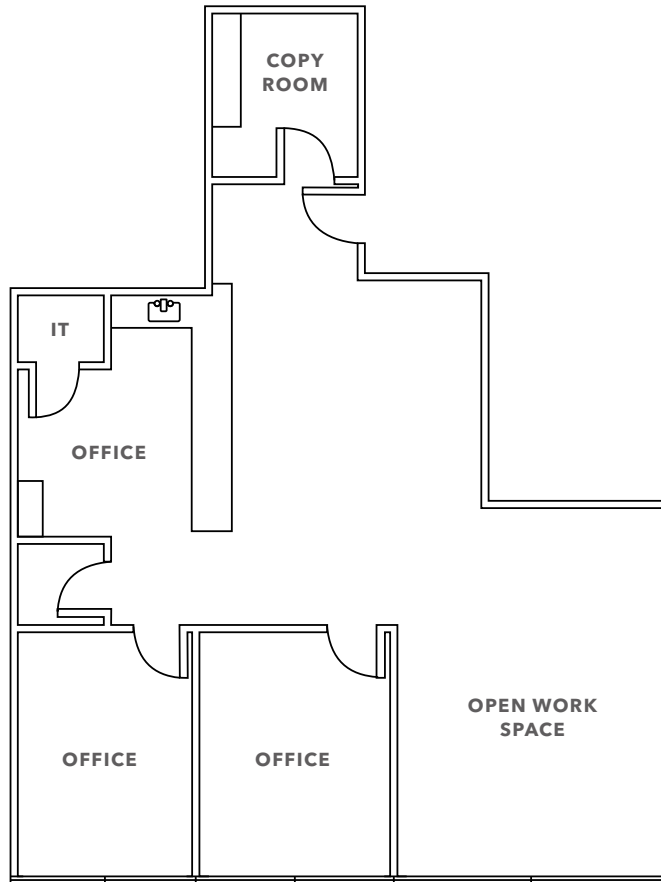
**5 MIN**

TO WA 90

**4 MIN**

TO COSTCO

# SUITE 150



*1,454 SF*

TOTAL AVAILABLE

*2*

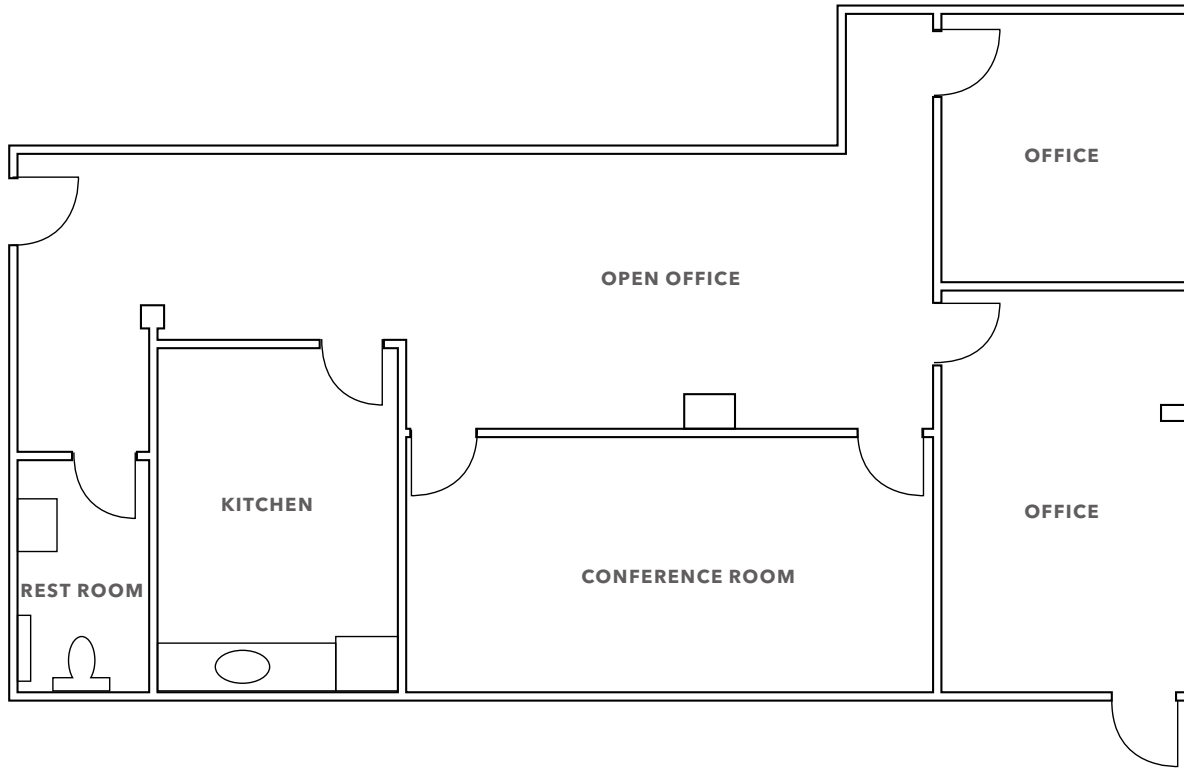
PRIVATE OFFICES

*NOW*

AVAILABLE



# SUITE 230



**1,686 SF**

TOTAL AVAILABLE

**2**

PRIVATE OFFICES

**LARGE**

CONFERENCE ROOM

**KITCHEN**

& OPEN WORKSPACE INCLUDED

**12/01/26**

AVAILABLE



# SUITE 290

*1,370 SF*

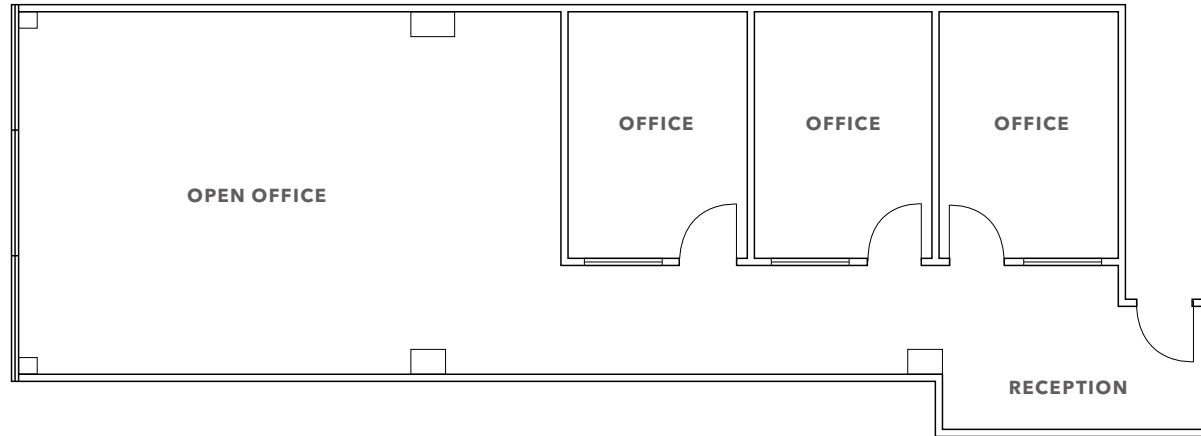
TOTAL AVAILABLE

*3*

PRIVATE OFFICES

*NOW*

AVAILABLE



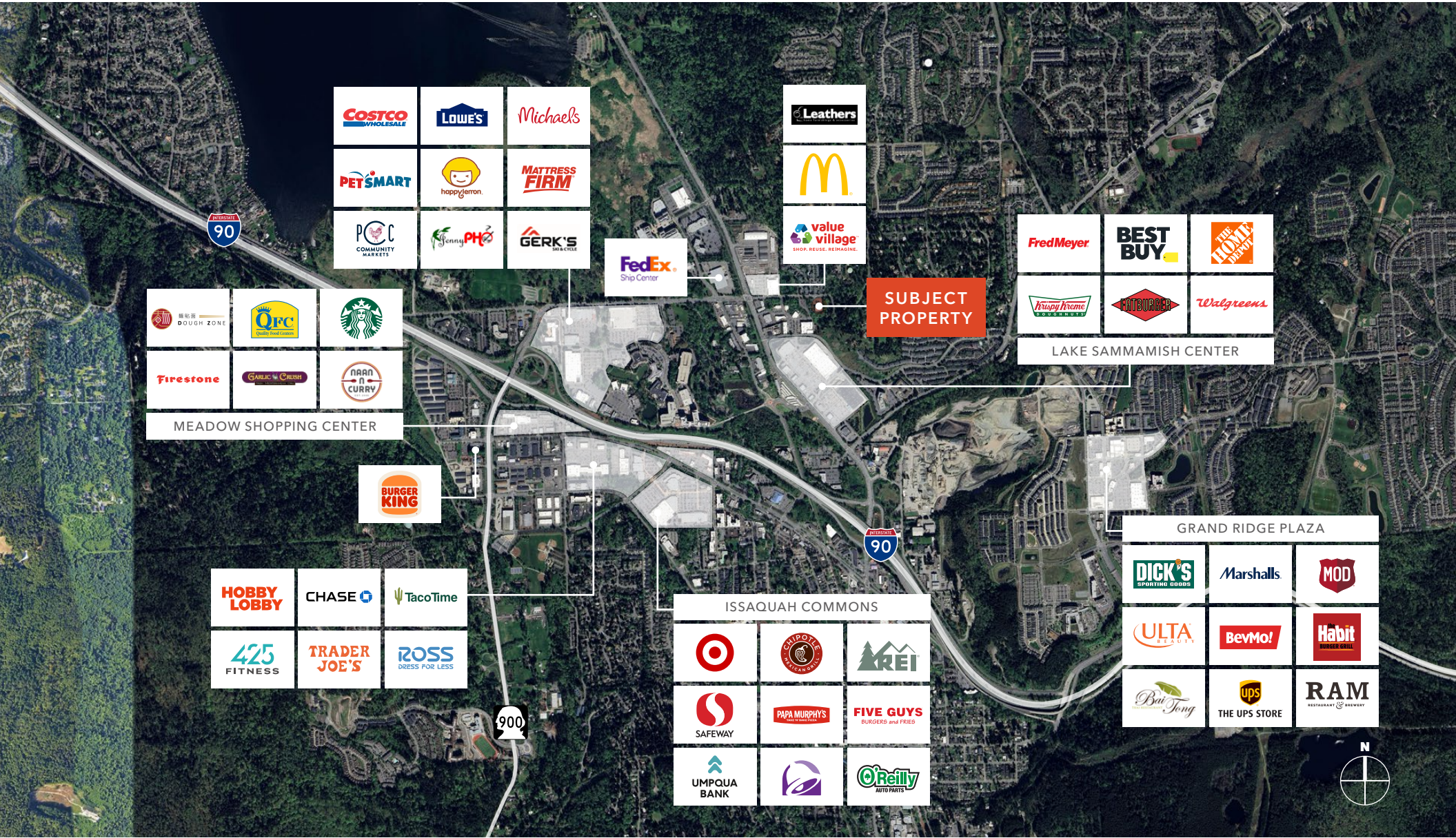
SAMMAMISH VIEW OFFICE



SAMMAMISH VIEW OFFICE



SAMMAMISH VIEW OFFICE



<b>COSTCO</b> WHOLESALE	<b>LOWE'S</b>	<i>Michaels</i>
<b>PETSMART</b>	happyjemon	<b>MATTRESS FIRM</b>
<b>POC</b> COMMUNITY MARKETS	Jenny PHO	<b>GERK'S</b> SHOES & ACCESSORIES

<b>Leathers</b>
<b>McDonald's</b>
<b>value village</b> SHOP. REUSE. REIMAGINE.

<b>Fred Meyer</b>	<b>BEST BUY</b>	<b>THE HOME DEPOT</b>
<b>Krispy Kreme</b>	<b>AMBURGER</b>	<i>Walgreens</i>

LAKE SAMMAMISH CENTER

<b>DOUGH ZONE</b>	<b>QFC</b> Quality Food Center	<b>Starbucks</b>
<b>Firestone</b>	<b>GARLIC &amp; OLIVE</b>	<b>NAAN &amp; CURRY</b>

MEADOW SHOPPING CENTER

<b>BURGER KING</b>
--------------------

<b>HOBBY LOBBY</b>	<b>CHASE</b>	<b>TacoTime</b>
<b>425 FITNESS</b>	<b>TRADER JOE'S</b>	<b>ROSS</b> DRESS FOR LESS

<b>Target</b>	<b>CHIPOTLE</b> RESTAURANT	<b>KREI</b>
<b>SAFeway</b>	<b>PAPA MURPHY'S</b>	<b>FIVE GUYS</b> BURGERS and FRIES
<b>UMPQUA BANK</b>		<b>O'Reilly</b> AUTO PARTS

ISSAQUAH COMMONS

<b>DICK'S</b> SPORTING GOODS	<b>Marshalls</b>	<b>MOD</b>
<b>ULTA</b>	<b>BevMo!</b>	<b>Habit</b> RESTAURANT & BREWERY
<i>Bai Jong</i>	<b>ups</b> THE UPS STORE	<b>RAM</b> RESTAURANT & BREWERY

GRAND RIDGE PLAZA





*Exclusively listed by*

**GARY GUENTHER**

425.450.1154

[gary.guenther@kidder.com](mailto:gary.guenther@kidder.com)

**CHARLES CAPLICE**

425.450.1160

[charles.caplice@kidder.com](mailto:charles.caplice@kidder.com)

**KIDDER.COM**