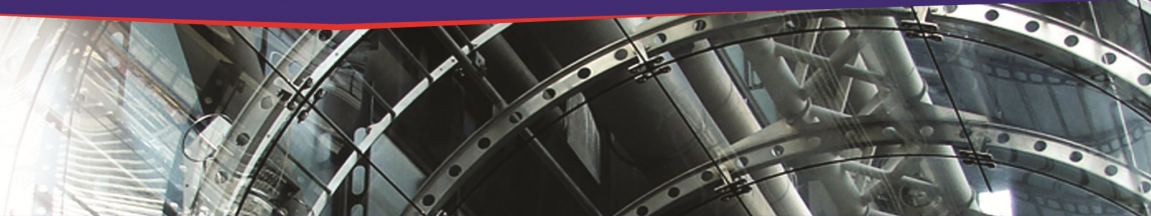




**MARTIN
COMMERCIAL
GROUP**
Commercial Real Estate Services



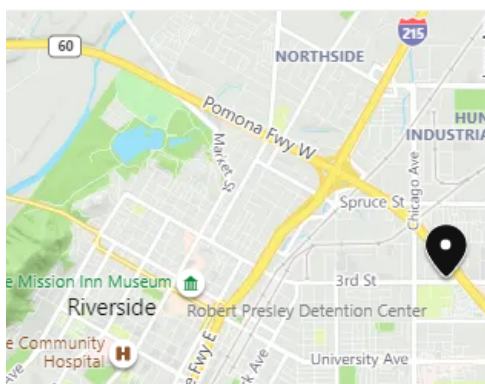
AVAILABLE FOR LEASE

4,804 SQ. FT. MULTI-TENANT INDUSTRIAL UNIT



1525 Third Street, Suite J, Riverside

- Multi-Tenant Industrial Building
- First Floor (3 Offices, Wet Bar
2 Restrooms)
- Second Floor (2 Offices)
- 2 Restrooms
- 18' Warehouse Clearance
- 1 Ground Level Loading Door
- Easy Access to 60/91/215 Fwys



For More Information
Please Contact:

ERIN LAGOMARSINO

elagomarsino@mcgre.com

951.684.1251

*Since 1953...
Orange County ~ Inland Empire*

The information contained herein has been obtained from sources we deem reliable. While we have no reason to doubt its accuracy, we do not guarantee it.



MARTIN COMMERCIAL GROUP

Commercial Real Estate Services

RIVERSIDE TRADE CENTER

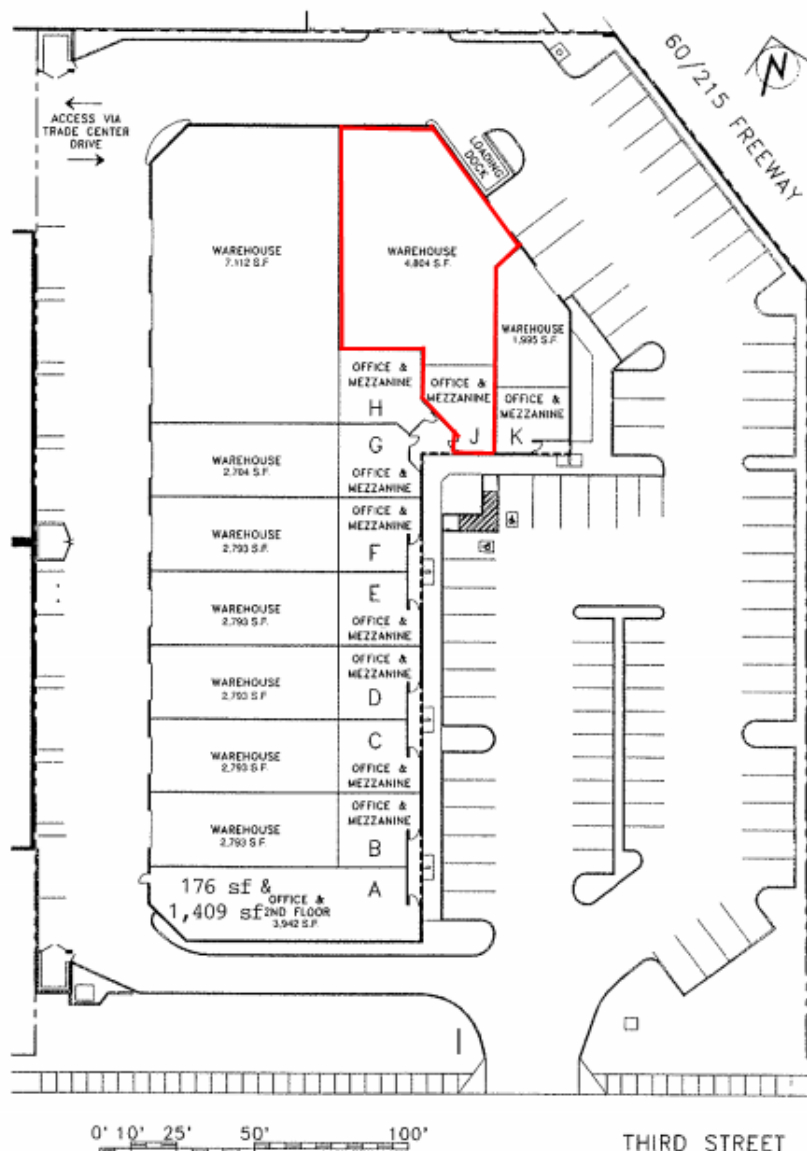
For More Information
Please Contact:

ERIN LAGOMARSINO

elagomarsino@mcgre.com
DRE # 00992436

951.684.1251

*Since 1953...
~Orange County~
Inland Empire*



WWW.MCGRE.COM